

Regional Sewerage Program Technical Committee Meeting Agenda

April 27, 2023

Page 2 of 2

1. Action Items

- A. Approval of March 30, 2023 Technical Committee Meeting Minutes
- B. Regional Plant No. 1 Digesters 6 and 7 Rehabilitation and Roof Repairs Construction Contract Award
- C. Regional Plant No. 1 SCADA Migration Project Construction Contract Award

2. Informational Items

- A. Fiscal Year 2023/24 and 2024/25 Biennial Budget Overview of the Regional Wastewater and Recycled Water Programs
- B. Recycled Water Groundwater Recharge Update
- C. Operations & Maintenance Department Quarterly Update
- D. Pretreatment & Compliance Updates (*Oral*)

3. Receive and File

- A. Draft Regional Sewerage Policy Committee Agenda
- B. Building Activity Report
- C. Recycled Water Distribution - Operations Summary

4. Other Business

- A. Committee Member Requested Agenda Items for Next Meeting
- B. Committee Member Comments
- C. Next Regular Meeting – May 25, 2023

Adjourn

DECLARATION OF POSTING

I, Laura Mantilla, Executive Assistant of the Inland Empire Utilities Agency*, a Municipal Water District, hereby certify that, per Government Code Section 54954.2, a copy of this agenda has been posted at the Agency's main office, 6075 Kimball Avenue, Building A, Chino, CA and on the Agency's website at www.ieua.org at least seventy-two (72) hours prior to the meeting date and time above.

In compliance with the Americans with Disabilities Act, if you need special assistance to participate in this meeting, please contact Laura Mantilla at (909) 993-1944 or lmantilla@ieua.org 48 hours prior to the scheduled meeting so that IEUA can make reasonable arrangements to ensure accessibility.

**ACTION
ITEM**

1A



Regional Sewerage Program Technical Committee Meeting MINUTES OF MARCH 30, 2023

CALL TO ORDER

A regular meeting of the IEUA/Regional Sewerage Program – Technical Committee was held via teleconference on Thursday, March 30, 2023. Committee Chair Amanda Coker/Cucamonga Valley Water District called the meeting to order at 2:01 p.m. Recording Secretary Laura Mantilla took roll call and established a quorum was present.

COMMITTEE MEMBERS PRESENT VIRTUALLY:

Dave Crosley	City of Chino
Ron Craig	City of Chino Hills
Amanda Coker	Cucamonga Valley Water District (CVWD)
Brian Wolfe	City of Fontana
Chris Quach	City of Ontario
Nicole deMoet	City of Upland
Christiana Daisy	Inland Empire Utilities Agency (IEUA)

OTHERS PRESENT:

Randall Reed	CVWD
Jerry Burke	IEUA
Javier Chagoyen-Lazaro	IEUA
Kristine Day	IEUA
Elizabeth Hurst	IEUA
Scott Lening	IEUA
Laura Mantilla	IEUA
Jason Marseilles	IEUA
Cathy Pieroni	IEUA
Matt Poeske	IEUA
Sushmitha Reddy	IEUA
Steven Smith	IEUA
Ken Tam	IEUA
Ashley Womack	IEUA

PUBLIC COMMENTS

There were no public comments.

ADDITIONS/CHANGES TO THE AGENDA

There were no additions/changes to the agenda.

1. ACTION ITEMS**A. APPROVAL OF FEBRUARY 23, 2023 TECHNICAL COMMITTEE MEETING MINUTES**

Motion: By Nicole deMoet/City of Upland and seconded by Chris Quach/City of Ontario to approve the meeting minutes of February 23, 2023, Regional Technical Committee meeting by the following vote:

Ayes: Craig, Crosley, Daisy, DeMoet, Quach, Wolfe, Coker

Noes: None

Absent: Heredia

Abstain: None

The motion passed by a vote of 7 ayes, 0 noes, 1 absent, 1 abstain.

B. FISCAL YEARS 2023/24 AND 2024/25 PROPOSED RATES FOR THE REGIONAL WASTEWATER PROGRAMS

Javier Chagoyen-Lazaro/IEUA gave a presentation on the Wastewater Programs cost of service and proposed rates for fiscal years 2023/24 and 2024/25. He stated that the proposed rates were also shared with Building Industry Association. Discussion ensued regarding the Ten-Year Capital Improvement Plan (TYCIP), Ten-year Forecast, use of property taxes, and O&M cost.

Christiana Daisy/IEUA stated that staff will be presenting the TYCIP and Ten-Year Forecast to the IEUA Board and the Regional Committees for input.

Motion: By Ron Craig/City of Chino Hills and seconded by Nicole deMoet/City of Upland to recommend to the Regional Policy Committee to approve the proposed rates and fees for Fiscal Years (FYs) 2023/24 and 2024/25 for the Regional Wastewater Program, effective July 1, 2023, by the following vote:

Ayes: Craig, Crosley, Daisy, DeMoet, Quach, Coker

Noes: None

Absent: Heredia

Abstain: Wolfe

The motion passed by a vote of 6 ayes, 0 noes, 1 absent, and 1 abstain.

2. INFORMATIONAL ITEMS**A. GRANTS SEMI-ANNUAL UPDATE**

Ashley Womack/IEUA provided an overview of the Agency's grants and loans portfolio and highlighted the status of IEUA's current agreements and applications with the various funding agencies.

B. ENGINEERING AND CONSTRUCTION MANAGEMENT PROJECT UPDATES

Jason Marseilles/IEUA provided an update on the following projects: Collection System Condition Assessment; RP-1 Headworks Bar Screens Improvements; and NRWS Manhole & Collection Systems Upgrades FY 2022/23.

C. OPERATIONS & COMPLIANCE UPDATES

Ken Tam/IEUA reported that there was another foaming incident at Carbon Canyon Water Recycling Facility (CCWRF) earlier this month. IEUA worked with the City of Chino Source Control staff and identified a personal care manufacturer to be the contributor. IEUA and the City of Chino staff are working with the manufacturer to permit additional pretreatment equipment and implement best practices. Mr. Tam also reported that on March 28, CCWRF received a slug substance that triggered lower explosive limit meter and minor foaming. Samples were taken for analysis. IEUA and the City of Chino Source Control Team are investigating the source.

RP-1 Operations staff notified the Source Control team last week of a slug substance coming through the headworks causing the influent to turn blue. IEUA worked with the City of Ontario Source Control staff and identified several industries that could have been the contributors. Inspections will be performed at those sites to identify the source. Mr. Tam thanked the City of Chino and the City of Ontario Source Control Teams for working with IEUA on the investigations.

Mr. Tam stated that a joint meeting will be held on April 12 with IEUA Collections, Source Control and contracting agencies to discuss the fats, oils, greases, slug loads, and ragging issues that IEUA has been experiencing at the plants.

Mr. Tam provided an update on the CASA Study. He stated that CASA will resume the study in May and will be monitoring the sites within the IEUA service area from August to September 2023. Mr. Tam will contact the City of Chino, CVWD, City of Ontario, and the City of Fontana to review the sites and determine if those sites are still feasible for monitoring.

Chair Coker asked that the invite for the April 12 meeting be forwarded to her.

3. RECEIVE AND FILE

Items 3A – 3C were received and filed by the Committee.

A. DRAFT REGIONAL SEWERAGE POLICY COMMITTEE AGENDA**B. BUILDING ACTIVITY REPORT****C. RECYCLED WATER DISTRIBUTION – OPERATIONS SUMMARY****4. OTHER BUSINESS****A. COMMITTEE MEMBER REQUESTED AGENDA ITEMS**

There were no committee member comments.

B. COMMITTEE MEMBER COMMENTS

There were no committee member comments.

C. NEXT MEETING – APRIL 27, 2023

ADJOURNMENT – Chair Coker adjourned the meeting at 3:05 p.m.

Prepared by:

Laura Mantilla, Recording Secretary

DRAFT

**ACTION
ITEM**

1B

Date: April 2023/May 2023

To: Regional Committees

From: Inland Empire Utilities Agency

Subject: RP-1 Digesters 6 and 7 Rehabilitation and Roof Repairs Construction
Contract Award

RECOMMENDATION

It is requested that the Regional Committees recommend the Inland Empire Utilities Agency (IEUA) Board of Directors to award the construction contract for the Regional Water Recycling Plant No. 1 (RP-1) Digester 6 and 7 Roof Repairs, Project No. EN17042, to the lowest, responsive, and responsible bidder in the amount of \$4,930,500.

BACKGROUND

To maintain the efficiency and reliability of the digestion process at the Regional Water Recycling Plant No. 1 (RP-1), the digesters need to be cleaned and maintained every seven to ten years to remove solids, debris, and deposits collected in the tank and piping system.

Digesters 6 & 7 were part of a two-phase project for repair and rehabilitation. Phase 1 completed the majority of Digester 6 work in late 2021. The project is currently in Phase 2 for Digester 7 work. The scope includes the replacement of the sludge recirculation pumps and the repair of Digester 7 roof. The scope also includes Digester 7 rehabilitation of the internal concrete surfaces and coating, and replacement/improvement of interior and exterior mechanical piping systems.

In late 2021, IEUA retained GHD Inc. (GHD) to provide consulting engineering services associated with the Digester 7 repairs and upgrades including condition assessment, design, construction administration services, and commissioning. GHD completed the design phase in January 2023.

On February 16, 2023, Inland Empire Utilities Agency (IEUA) issued an invitation for bids to three prequalified contractors. On April 6, 2023, IEUA received three construction bids. Innovative Construction Solutions (ICS) was the lowest responsive, responsible bidder with a bid price of \$4,930,500. This was above the engineer's estimate of \$3,540,000, we spoke with a few of the contractors about why the prices were higher than anticipated and they all expressed that labor prices have gone up due to recently negotiated labor agreements, and fuel prices have increased significantly, in addition to the increased price of materials and inflation that we've been seeing. We also spoke with ICS as their bid was lower than the others, they double-checked all of

their numbers and confirmed that they're comfortable with their bid price and are eager to proceed with the project.

The following table presents the anticipated project cost:

Description	Estimated Cost
<i>Design Services (Actual)</i>	<i>\$972,627</i>
Consultant Design Services (Dig 6. & 7)	\$471,019
IEUA Design Services (Dig 6. & 7)	\$501,608
<i>Construction Services</i>	<i>\$1,861,541</i>
IEUA & Consultant Engineering Services During Construction Digester. 6 (Actual)	\$881,341
Consultant Engineering Services During Construction Dig. 7	\$240,700
IEUA Construction Services Dig. 7 (~15%)	\$739,500
<i>Construction</i>	<i>\$9,615,993</i>
Construction Digester 6	\$3,945,993
Construction Digester 7 (This Action)	\$4,930,500
Contingency (~15%)	\$739,500
Total Project Cost	\$12,450,161
Total Project Budget	\$9,032,843
Total Budget Increase Needed (This Action)	\$3,417,318
Revised Total Project Budget	\$12,450,161

The following is the project schedule:

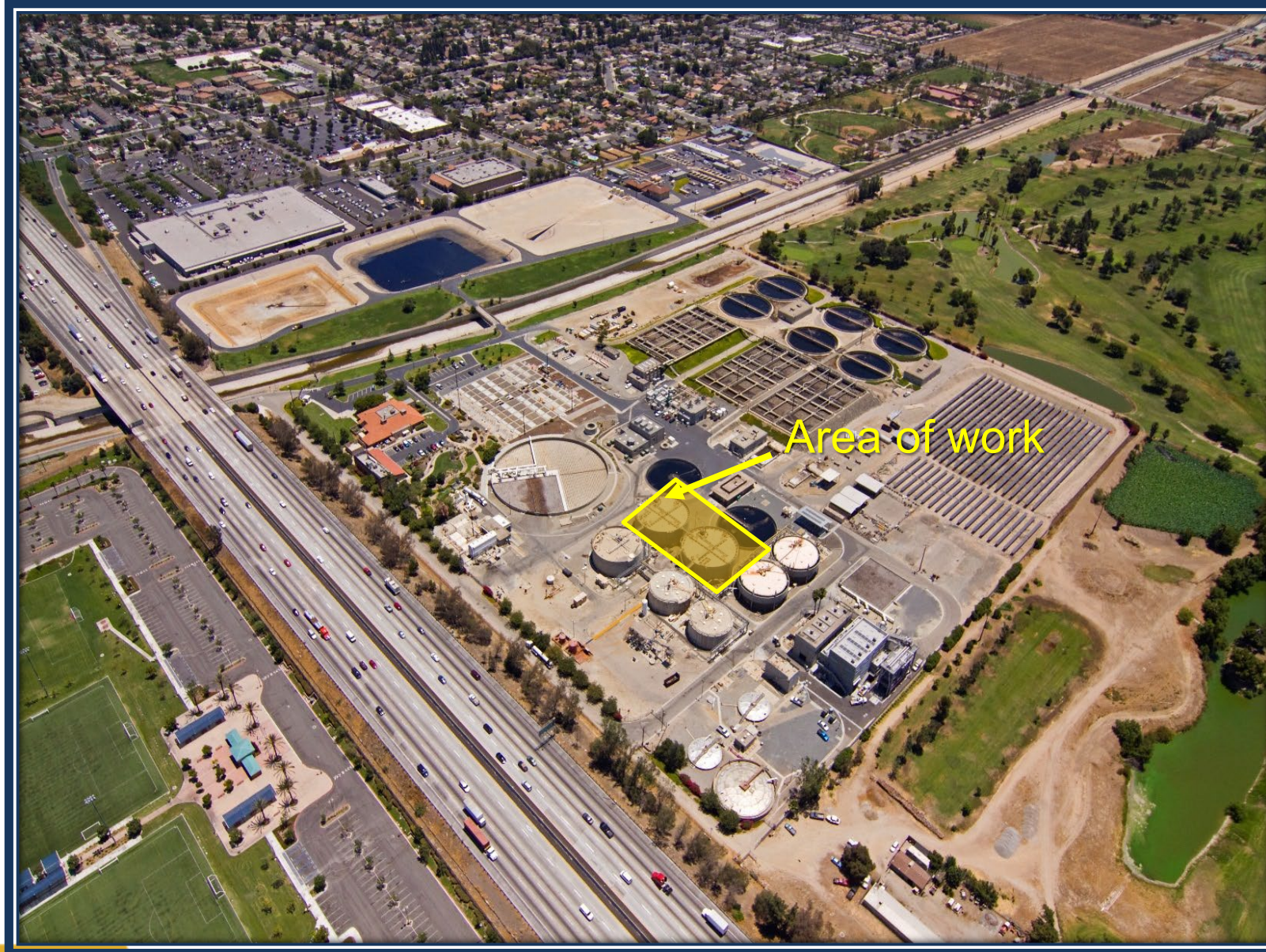
Project Milestone	Date
Construction Contract Award	May 2023
Construction Completion	December 2023

The RP-1 Digester 6 and 7 Rehabilitation and Roof Repairs Project is consistent with ***IEUA's Business Goal of Wastewater Management***, specifically the Asset Management and Water Quality objectives that IEUA will ensure that systems are well maintained, upgraded to meet evolving requirements, sustainably managed, and can accommodate changes in regional water use to protect public health, the environment, and meet anticipated regulatory requirements.

RP-1 Digesters 6 and 7 Rehabilitation and Roof Repairs Construction Contract Award Project No. EN17042

Travis Sprague PE/Jason Marseilles PE
Associate Engineer
April 2023/May 2023

Location



Background

Asset Condition

- Constructed 1988
- Roof cracks and deteriorated insulation
- Failed protective coating
- Piping at end of useful life

Phase 1 (Digester 6)

- Design Completed 2019
- Construction Completed 2021

Phase 2 (Digester 7)

- Design Completed March 2023



Digester 7 Interior



Digester 7 Roof Foam Cracks

Scope

Digester 6

Replace/rehab:

- Roof coating
- Pump

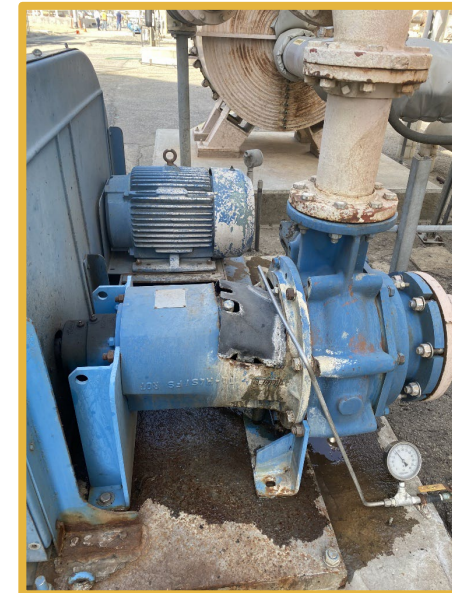
Digester 7

Replace/rehab:

- Roof
- Pump
- Piping
- Coating and concrete
- Manways and mixing system



Digester 7 Interior Piping



Existing Sludge
Recirculation Pump

Contractor Selection

- Pre-Qualified four Contractors July 28, 2022
- PlanetBids solicitation posted February 16, 2023
—50 calendar days (37 worked days)
- Three bids received April 6, 2023
- Innovative Construction Solutions was the lowest, responsive, responsible bidder

Bidder's Name	Total
Innovative Construction Solutions	\$4,930,500
GSE Construction Company Inc.	\$5,737,500
W.A. Rasic Construction Company, Inc.	\$5,992,405
Engineer's Estimate	\$3,540,000

Project Budget and Schedule

Description	Estimated Cost
Design Services (Actual)	\$972,627
Consultant Design Services (Dig 6. & 7)	\$471,019
IEUA Design Services (Dig 6. & 7)	\$501,608
Construction Services	\$1,861,541
IEUA & Consultant Engineering Services During Construction Dig. 6 (Actual)	\$881,341
Consultant Engineering Services During Construction Dig. 7	\$240,700
IEUA Construction Services Dig. 7 (~15%)	\$739,500
Construction	\$9,615,993
Construction Digester 6	\$3,945,993
Construction Digester 7 (this action)	\$4,930,500
Contingency (~15%)	\$739,500
Total Project Cost	\$12,450,161
Total Project Budget	\$9,032,843
Total Budget Augmentation	\$3,417,318
Revised Total Project Budget	\$12,450,161

Project Milestone	Date
Construction	
Construction Contract Award	May 2023
Construction Completion	December 2024

Staff's Recommendation

It is requested that the Regional Committees recommend the IEUA Board of Directors to award the construction contract RP-1 Digester 6 & 7 Rehabilitation and Roof Repairs , Project No. EN17042, to the lowest, responsive bidder in the amount of \$4,930,500;

The RP-1 Digester 6 & 7 Rehabilitation and Roof Repairs project is consistent **with IEUA's Business Goal of Wastewater Management**, specifically the Asset Management and Water Quality objectives that IEUA will ensure that systems are well maintained, upgraded to meet evolving requirements, sustainably managed, and can accommodate changes in regional water use to protect public health, the environment, and meet anticipated regulatory requirements.

**ACTION
ITEM**

1C

Date: April 2023/May 2023

To: Regional Committees

From: Inland Empire Utilities Agency

Subject: RP-1 SCADA Migration Project Construction Contract Award

RECOMMENDATION

It is requested that the Regional Committees recommend the Inland Empire Utilities Agency (IEUA) Board of Directors to award the construction contract for the Regional Water Recycling Plant No. 1 (RP-1) SCADA Migration, Project No. EN13016.05, to the lowest, responsive, and responsible bidder in the amount of \$9,695,500.

BACKGROUND

The Regional Plant No. 1 (RP-1) Supervisory Control and Data Acquisition (SCADA) Migration project will upgrade RP-1's current SCADA system from its existing state of Foxboro Legacy Distributed Control System (DCS) and Rockwell SCADA systems with multiple vendor Programmable Logic Controllers (PLCs) to a single, integrated plant-wide Rockwell PlantPAX 5.0 Distributed Control System. The distributed control system is designed to monitor and automate treatment processes at RP-1 and will provide alarm notifications, remote control for on-call operators, and recording of process data reported to regulatory agencies. This is the final phase of the SCADA Migration Master plan, in which Inland Empire Utilities Agency (IEUA) has already completed this migration at Carbon Canyon in 2016 and at Regional Plant No. 4 (RP-4) and Regional Plant No. 5 (RP-5) in 2019.

After issuing a Request for Qualifications in May 2022, IEUA pre-qualified four contractors to submit a bid for this project. IEUA issued an invitation for bids in November 2022 and three bids were received in March 2023. CDM Constructors was deemed the lowest, responsive, responsible bidder with a bid price of \$9,695,500. As a reminder, CDM Constructors was the contractor for the RP-4 and RP-5 SCADA Migration Projects.

The following table presents the anticipated project cost:

Description	Estimated Cost
<i>Design Services</i>	<i>\$4,183,510</i>
Consultant Design Services	\$2,547,987
IEUA Design Services	\$1,303,883
Arcadis U.S. Inc. (RP-1 Control Schematics)	\$239,940
SCADA Programming Services – PCN Review	\$91,700
<i>Construction Services</i>	<i>\$5,692,901</i>
Consultant Engineering Services During Construction	\$669,717
IEUA Construction Services	\$1,223,184
SCADA Programming Services - Integration - TSI	\$3,800,000
<i>Construction</i>	<i>\$13,120,075</i>
Construction Contract	\$9,695,500
Rockwell Pre-Purchased Parts	\$1,891,100
Cisco Pre-Purchased Parts	\$189,853
Tertiary Building Water Piping Upgrades	\$150,888
Contingency (~10%)	\$1,192,734
Total Project Cost (this Project)	\$22,996,486
Total Project Cost (CCWRF, RP-4, and RP-5)	\$14,952,890
Total Project Cost (All)	\$37,949,376
Total Project Budget	\$31,117,055
Budget Augmentation	\$6,882,945
Proposed Total Project Budget	\$38,000,000

The following is the project schedule:

Project Milestone	Date
Construction Contract Award	May 2023
Construction Completion	June 2026

The RP-1 SCADA Migration Project is consistent with **IEUA's Business Goal of Wastewater Management**, specifically the Asset Management and Water Quality objectives that IEUA will ensure that systems are well maintained, upgraded to meet evolving requirements, sustainably managed, and can accommodate changes in regional water use to protect public health, the environment, and meet anticipated regulatory requirements.

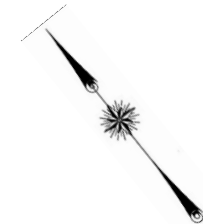
RP-1 SCADA Migration Project Construction Contract Award

Project No. EN13016.05

Travis Sprague, PE/Jason Marseilles PE
Senior Engineer
April 2023/May 2023

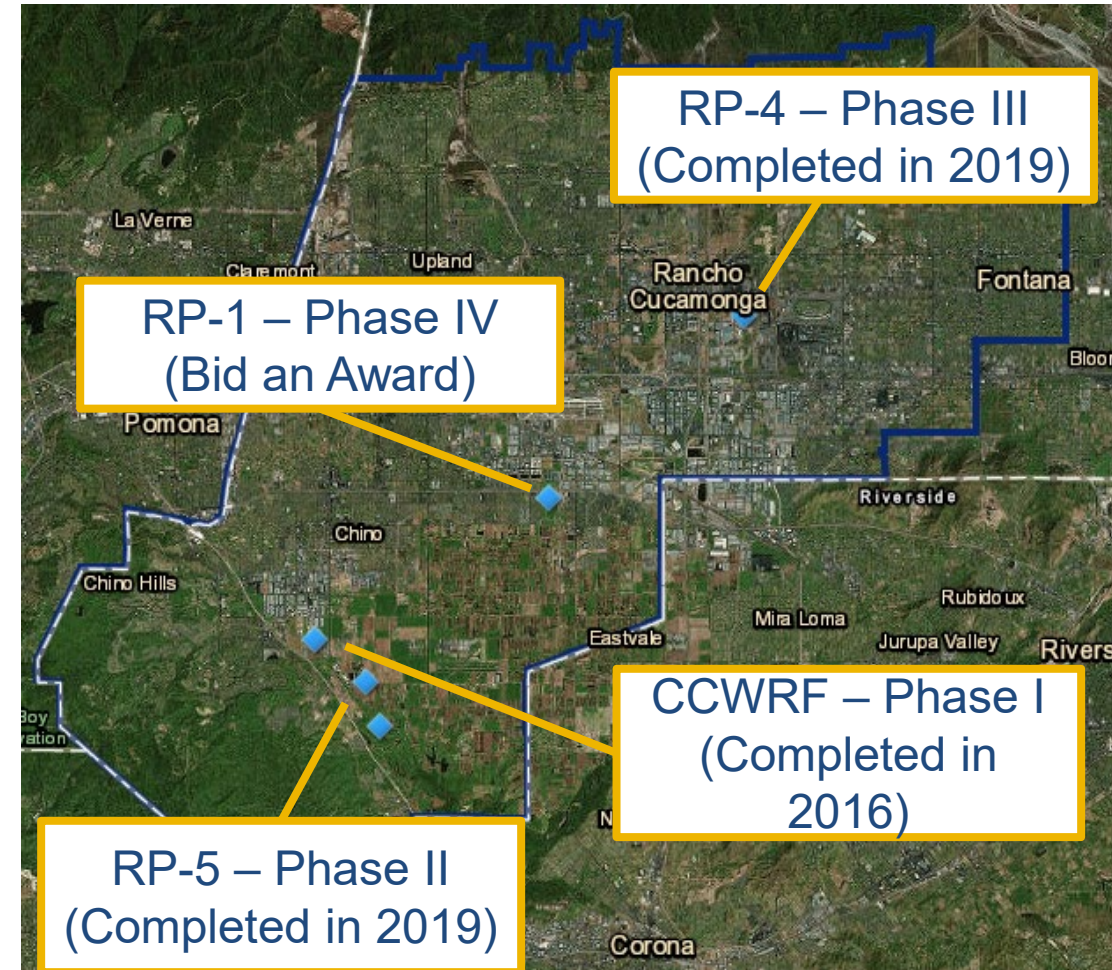
Project Location

Regional Water Recycling Plant No. 1 (RP-1)



Background

- SCADA Master Plan adopted in 2012
- Carbon Canyon, RP-4, and RP-5 migrated to new SCADA system
- RP-1 last treatment plant to be migrated
—Design completed in November 2022



Project Scope

- Upgrades to existing control and server rooms
- Upgrades to existing control panels
- New Human Machine Interface (HMI) hardware and software
- Replacement of most of the existing RP-1 fiber network
- Programming services provided by Technical Systems, Inc. (TSI)



Main Control Building Server Room



Human Machine Interface (HMI)

Contractor Selection

- Pre-Qualified four contractors on July 26, 2022
- PlanetBids solicitation posted on November 23, 2022
—111 calendar days (73 working days)
- Three bids were received on March 14, 2023
- CDM Constructors was the lowest, responsive, responsible bidder

Bidder's Name	Final Bid Amount
CDM Constructors, Inc.	\$9,695,500.00
Technical Systems Inc.	\$11,661,000.00
LEED Electric Inc.	\$13,313,000.00
Engineer's Estimate	\$10,000,000.00

Project Budget and Schedule

Description	Cost
Design Services	\$4,183,510
Design Consultant Contract (actuals)	\$2,547,987
IEUA Design Services (actuals)	\$1,303,883
Arcadis U.S. Inc. (RP-1 Control Schematics)	\$239,940
SCADA Programming Services – PCN Review	\$91,700
Construction Services	\$5,692,901
Engineering Services During Construction – (this action)	\$669,717
IEUA Construction Services (10%)	\$1,223,184
SCADA Programming Services – Integration - TSI	\$3,800,000
Construction	\$13,120,075
Construction Contract (this action)	\$9,695,500
Rockwell Pre-Purchased Parts	\$1,891,100
Cisco Pre-Purchased Parts	\$189,853
Tertiary Building Water Piping Upgrades	\$150,888
Contingency (~10%)	\$1,192,734
Total Project Cost (this Project):	\$22,996,486
Total Project Cost (CCWRF, RP-4, and RP-5)	\$14,952,890
Total Project Cost (All)	\$37,949,376
Total Project Budget:	\$31,117,055
Budget Augmentation:	\$6,882,945
Proposed Total Project Budget:	\$38,000,000

Project Milestone	Date
Design	
Design Completion	November 2022
Construction (Estimated)	
Construction Contract Award	May 2023
Construction Completion	June 2026

Staff's Recommendation

It is requested that the Regional Committees recommend the IEUA Board of Directors to award the construction contract for the RP-1 SCADA Migration, Project No.EN13016.05, to CDM Constructors Inc., in the amount of \$9,695,500.

The RP-1 SCADA Migration Project is consistent with ***IEUA's Business Goal of Wastewater Management*** that ensures quality asset management and that systems are planned, constructed, and managed to protect quality asset management and that systems are planned, constructed, and managed to protect public health, the environment, and meet anticipated regulatory requirements.

**INFORMATION
ITEM**

2A

Date: April 27th/May 4th

To: Regional Committees

From: Inland Empire Utilities Agency

Subject: Fiscal Years 2023/24 and 2024/25 Biennial Budget Overview of the Regional Wastewater and Recycled Water Programs

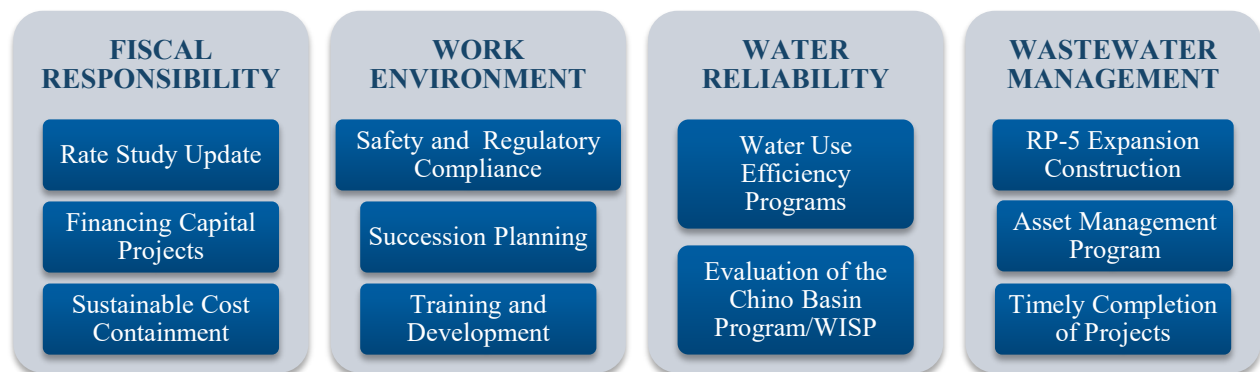
RECOMMENDATION

This is an information item for the Regional Committees to review the proposed biennial budget for the Regional Wastewater and Recycled Water funds.

BACKGROUND

This item was presented as an information item at the IEUA Board of Directors meeting on April 19, 2023.

The proposed Biennial Budget for the Regional Wastewater and Recycled Water programs and Ten-Year Capital Improvement Plan (TYCIP) are consistent with the Agency's long-term planning documents, and the Board-adopted Business Goals of fiscal responsibility, work environment, water reliability, and wastewater management. Some of the key objectives of the proposed biennial budget include:



The focus of this review is the proposed biennial budget for the Regional Wastewater and the Recycled Water programs. The Regional Wastewater proposed rates and budget were presented to the Regional Technical and Policy Committees on March 30 and April 6, 2023, respectively.

Key Objective Highlights

Agency Workforce: Establish a long-range plan for our Agency’s most important asset, our staff, to ensure the appropriate level of staff needed to accomplish Agency objectives, serve the region, and optimize organizational development and effectiveness.

The Agency wide staffing plan proposes 345 positions (340 authorized full time and 5 limited term employees) for FY 2023/24 and 356 positions (342 full time and 4 limited term employees) for FY 2024/25. The proposed staffing will allow for early recruitment of critical positions in support of the operations of the new and expanded RP-5 facilities coming on-line over the next two fiscal years, ensuring sustainable operations and services to our communities.

Property Tax Allocation

As summarized in Table 1, the property tax allocation remains unchanged. Property taxes continue to be a key funding source in support of the Agency debt service, the pay-go portion of expansion projects, future growth projects projected by sewage collection agencies, asset management for timely upkeep and improvement of aging assets, and to maintain compliance with changing regulatory and safety requirements. The completion of the RP-5 expansion project and key rehabilitation projects at RP-1 and RP-4 continues to be the primary focus over the next two fiscal years.

Table 1: Property Tax Allocation by Fund (\$ Millions)

Fund	Purpose	Current Allocation	FY 2023/24 Projection	FY 2024/25 Projection
Regional Wastewater Capital Improvement	Supports debt service costs for acquisition, improvement, replacement, and expansion of regional wastewater facilities.	65%	\$51.4	\$52.2
Regional Wastewater Operations & Maintenance	Supports capital replacements and rehabilitation cost and any operation costs not fully recovered by rates.	23%	18.2	18.5
Recycled Water	Supports debt service costs for acquisition, improvement, replacement, and expansion of regional recycled water facilities.	4.0%	3.1	3.2
Administrative Services	Supports agency-wide costs not allocated to other Agency funds.	4.5%	3.5	3.6
Water Resources	Supports regional water supply strategies.	3.5%	2.8	2.8
Total			\$79.0	\$80.3

Capital Investments and Capacity Efforts: The Agency will continue to focus on our long-standing tradition of constructing quality facilities and being an industry leader with our water resource management and wastewater treatment efforts.

The capital projects included in the proposed TYCIP of \$1.6 billion are needed to support an increase in services for future growth projected by the sewage collection agencies, asset management for timely upkeep and improvement of aging assets, and improvement of the treatment capacity to maintain compliance with changing regulatory and safety requirements.

The financing plan for the proposed TYCIP is supported by new debt borrowings of 64 percent and pay-go of 36 percent which includes connection fees, rates, and property taxes. The remaining one percent is a conservative estimate of grant funding. Agency staff will continue to pursue federal and state grant funding opportunities as well as low interest loan financing to facilitate the implementation of the TYCIP at the lowest possible cost.

Regional Wastewater Program

In accordance with the Regional Sewage Service Ordinance No. 111, the Regional Wastewater Program is comprised of two funds; the Regional Wastewater Capital Improvement (Wastewater Capital) fund and the Regional Wastewater Operations and Maintenance (Wastewater Operations) fund, components of each fund are shown below in Table 2.

Table 2: Regional Wastewater Program Components

Description	Wastewater Capital	Wastewater Operations
Accounts for the Agency's regional wastewater systems	Acquisitions, construction, improvement, and expansion.	Collection, treatment, and disposal of domestic sewage treatment, capital replacement and rehabilitation costs, and organics management.
Primary Revenues & Other Funding Sources	New EDU* connection fees, property taxes, debt proceeds, and grant receipts.	Monthly EDU* sewer rate, property taxes, and contract reimbursements.
Primary Expenses and Other Uses of Funds	Capital project costs, debt service, and program support.	O&M costs including employment, chemicals, utilities, materials & supplies, etc.

**EDU = Equivalent dwelling unit is the estimated discharges from a single residence.*

Regional Wastewater Capital Improvement Fund (Wastewater Capital Fund)

Total revenues and other funding sources in the Wastewater Capital fund are estimated at \$173.0 million and \$171.2 million for FYs 2023/24 and 2024/25, respectively. This amount includes financing in the form of State Revolving Fund (SRF) and Water Infrastructure Finance and Innovation Act (WIFIA) loan proceeds of \$85.5 million in FY 2023/24, and \$81.3 million in FY 2024/25 to support the construction of the RP-1 Solids Thickening Building, RP-5 Expansion, Philadelphia Force Main Project, and Carbon Canyon Water Recycling Facility Improvements. Table 3 summarizes the major funding sources for the Regional Wastewater Capital Improvement Fund.

New equivalent dwelling unit (EDU) connections are projected to be 3,000 each year. This projection is lower than the sewage customer agencies forecast of 7,701 and 7,551 units for FY 2023/24 and FY 2024/25, respectively. While the Agency applies sewage customer agencies growth forecasts to plan for future expansion of its facilities, a lower growth forecast is applied to revenue forecasts. This conservative approach ensures facilities are ready to meet the increased service demands from future growth and provides flexibility in financing options. Revenues from wastewater connection fees are estimated at \$24.4 million in FY 2023/24, and \$25.9 million in FY 2024/25. Projected connections and rates are shown in Appendix Table A3.

Property tax receipts allocated to the Wastewater Capital fund help support annual debt service costs and capital project expenditures. An increase of two percent in assessed valuations is assumed for property tax receipts projected for each of the next two fiscal years. Revenues from property tax receipts are estimated at \$51.4 million in FY 2023/24, and \$52.2 million in FY 2024/25.

Table 3: Wastewater Capital Fund Major Funding Sources

Major Funding Sources (\$Millions)	FY 2023/24	FY 2024/25	Key Assumptions
Wastewater Connection Fees	\$24.4	\$25.9	3,000 new EDU connections at a proposed fee of \$8,132 per EDU in FY 2023/24 and 3,000 new EDU connections at a proposed fee of \$8,620 for FY 2024/25.
Property Tax	51.4	52.2	Annual allocation of total property taxes to the Wastewater Capital fund will continue at 65% of total property tax receipts for both fiscal years.
Debt and Grant Proceeds	85.5	81.3	SRF and WIFIA loan proceeds for the RP-1 Solids Thickening Building, RP-5 Expansion, and various other projects.
Inter-Fund Transfers and Other	11.7	11.8	Interfund transfer from Wastewater Operations fund for their share of the RP-5 Solids Treatment expansion and the CCWRF* Asset Management Improvement project, inter-fund loan reimbursement and interest revenues.
Total	\$173.0	\$171.2	

*CCWRF- Carbon Canyon Water Recycling Facility

Total expenses and other uses of funds are \$142.4 and \$169.4 for FY 2023/24 and FY 2024/25 respectively. Capital projects in the Ten-Year Capital Improvement Plan represent approximately 80 percent of the proposed budget for each fiscal year, with \$113.9 million in capital project costs budgeted in FY 2023/24 and \$136.9 million in FY 2024/25. Table 4 represents major uses of funds for both fiscal years.

Table 4: Wastewater Capital Fund Major Expenses and Other Uses of Funds

Major Uses of Funds (\$Millions)	FY 2023/24	FY 2024/25	Key Assumptions
Program Support	\$8.8	\$9.1	Includes employment, professional services, etc. in support of CIP.
Capital Improvement Plan (CIP)	113.9	136.9	Major capital projects as summarized in Table 5.
Debt Service	7.0	7.9	Includes principal and interest for the 2017A, and 2020A bonds, 2020B Revenue Notes and various SRF loans.
Investment in IERCA	0.8	0.8	Includes the Agency's share of capital investment in the Inland Empire Regional Composting Authority (IERCA).
Other	11.9	14.7	Inter-fund transfers for capital and debt service support to other funds.
Total	\$142.4	\$169.4	

Table 5 includes major projects for FY 2023/24 and 2024/25 as well as future years per the Agency's Ten-Year Capital Improvement Plan.

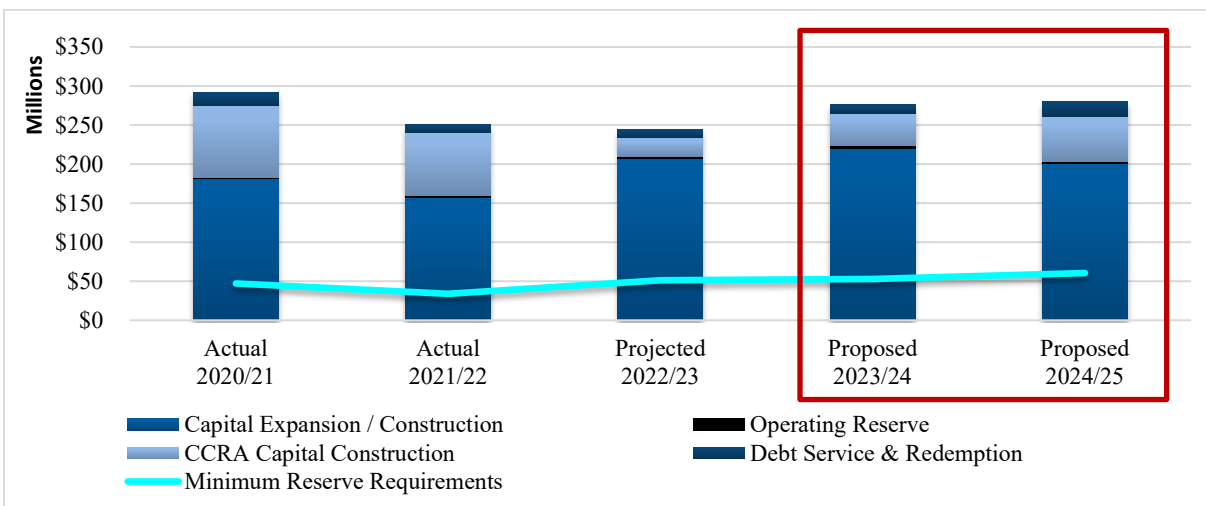
Table 5: Wastewater Capital Fund Major Capital Projects

Major Projects (\$Millions)	FY 2023/24	FY 2024/25	FY 2025/26 to FY 2032/33	TYCIP Total
RP-5 Expansion Construction	\$75.6	\$52.0	\$9.0	\$136.6
RP-1 Solids Thickening Bldg. & Acid Phase Digester	15.0	45.0	92.0	152.0
Asset Management Improvements	0.3	2.4	64.0	66.7
*CCWRF Asset Management Improvements	8.8	13.0	3.0	24.8
RP-1 Solids & Liquid Treatment Expansion	0.9	4.1	70.0	75.0
All Other Capital Projects	13.2	20.4	33.2	66.8
Total Capital Projects	\$113.8	\$136.9	\$271.2	\$521.9

*CCWRF- Carbon Canyon Water Recycling Facility

Wastewater Capital Fund Balance

The Wastewater Capital Fund ending balance for FY 2023/24 is estimated at \$276.5 million, and \$280.1 million for FY 2024/25 as shown in Figure 1. The estimated increase for both fiscal years is due to anticipated debt and grant proceeds to support the construction of the RP-1 Solids Thickening Building and the RP-5 Expansion project.

Figure 1: Wastewater Capital Fund Reserve by Type

Regional Wastewater Operations & Maintenance Fund (Wastewater Operations)

Total revenues and other funding sources in the Wastewater Operations & Maintenance fund are estimated at \$110.7 million and \$116.5 million for FYs 2023/24 and 2024/25, respectively. Table 6 summarizes the Wastewater Operations & Maintenance fund proposed major revenues and other funding sources for the FYs.

Table 6: Wastewater Operations Fund Major Revenues and Other Funding Sources

Major Funding Sources (\$Millions)	FY 2023/24	FY 2024/25	Key Assumptions
Monthly EDU	\$83.1	\$88.5	Based on the proposed EDU rate of \$23.39 in FY 2023/24 and \$24.79 FY 2024/25
Property Tax	18.2	18.5	Annual allocation of property taxes of 23% of total property tax receipts for both fiscal years.
Cost Reimbursement from IERCA*	4.7	4.9	Reimbursement of IERCA* labor costs.
Other	4.7	4.6	Includes interfund-transfers from wastewater connection fees to support capital projects; interest revenue, contract cost reimbursement, and lease revenue.
Total	\$110.7	\$116.5	

*Inland Empire Regional Composting Authority

Total expenses and other uses of funds are \$130.2 million in FY 2023/24 and \$150.1 million in FY 2024/25. Proposed expenses and other uses of funds for FYs 2023/24 and 2024/25 are shown in Table 7.

Major expenses in the Wastewater Operations fund include operating and maintenance (O&M) expenses, capital Replacement & Rehabilitation (R&R) project costs, organic management activities, and debt service costs. O&M expenses include employment costs based on the proposed staffing plan supporting the operations of new facilities coming on-line as a result of the RP-5 Expansion project. The projected O&M expenses also include anticipated increases in electricity

rates from Southern California Edison (SCE) and significant increases seen in chemical costs across the industry.

Table 7: Wastewater Operations Fund Major Expenses & Other Uses of Funds

Major Uses of Funds (\$Millions)	FY 2023/24	FY 2024/25	Key Assumptions
Operations & Maintenance (O&M)	\$83.2	\$90.6	Includes employment, chemicals utilities, professional and contract labor costs, and other O&M costs.
O&M project costs	7.3	5.4	Includes repairs to treatment facilities and collection system.
Capital Rehabilitation & Replacement (R&R) project costs	33.3	47.2	Major capital projects are summarized in Table 8.
Debt Service	1.4	1.4	Includes principal and interest for the 2017A bonds and SRF loan for the water quality laboratory.
Other	5.0	5.5	Inter-fund transfers for capital project support to the Administrative Services and share of the RP-5 Expansion project and CCWRF Asset Management Improvement project.
Total	\$130.2	\$150.1	

A total of \$33.3 million in capital project costs is budgeted for FY 2023/24 and \$47.2 million is projected for FY 2024/25. Major capital projects are listed in Table 8.

Table 8: Wastewater Operations Fund Major Capital Projects

Major Projects (\$Millions)	FY 2023/24	FY 2024/25	FY 2025/26 to FY 2032/33	TYCIP Total
RP-1 Advanced Water Treatment Facility	0.6	2.0	114.9	117.5
SCADA Enterprise System	6.8	7.4	4.5	18.7
RP-1 Secondary System Rehabilitations	0.0	0.5	11.0	11.5
RP-1 Influent Pump Station Electrical Improvements	0.9	6.3	0.9	8.1
RP-4 Process Improvement Phase II	1.1	6.3	0.5	7.9
All Other Capital Projects	23.9	24.7	112.3	160.9
Total	\$33.3	\$47.2	\$244.1	\$324.6

Monthly EDU Sewer Rate

The proposed monthly sewer rate for Fiscal Years 2023/24 and 2024/25 are \$23.39 and \$24.79, respectively. Table 9 presents the adopted monthly sewer rate for FY 2022/23 and the proposed rates for FYs 2023/24 and 2024/25.

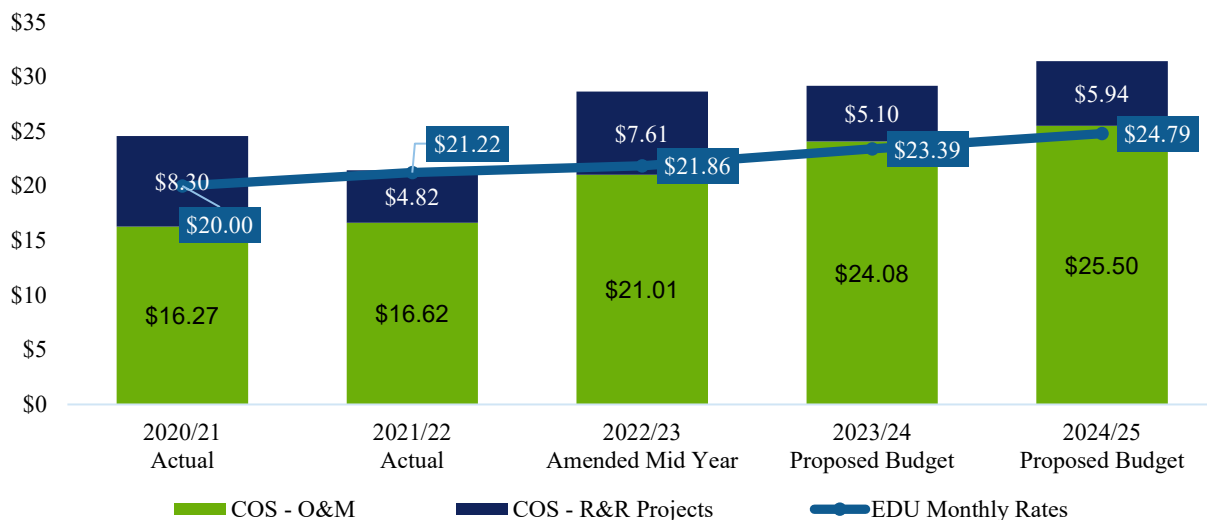
Table 9: Proposed Monthly EDU Sewage Rates

Rate Description	FY 2022/23 Adopted	FY 2023/24 Proposed	FY 2024/25 Proposed
EDU Monthly Rate	\$21.86	\$23.39	\$24.79
Effective Date	7/01/22	7/01/23	7/01/24

Figure 2 shows actual cost of service for the Wastewater Operations fund, with actual data for Fiscal Years 2020/21 and 2021/22 and projected from FY 2022/23 through FY 2024/25. The proposed rates for FY 2023/24 and FY 2024/25 are below the projected full cost of service. The cost of service not covered by the monthly EDU rate will be covered by property taxes and the use of reserves.

One of the key objectives from the Agency Board is to establish rates that fully recover the cost of providing service. The Agency will perform a comprehensive cost of service study upon the completion of the return to sewer study to help update the parameters defining an EDU in the Agency service area.

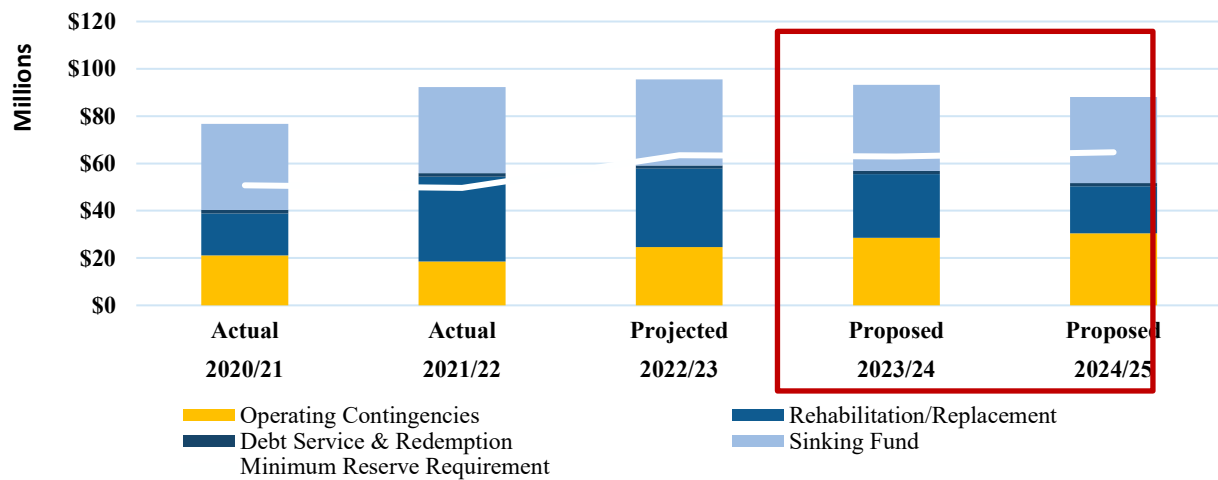
Figure 2: Monthly EDU Sewage Cost of Service



Wastewater Operations Fund Balance

The projected Wastewater Operations fund ending balance is estimated at \$93.3 million and \$88.1 million for FYs 2023/24 and 2024/25, respectively. The projected change in fund balance is due to the contributions (inter-fund transfers) to the Wastewater Capital fund to support for the Wastewater Operations fund share of the RP-5 Expansion and planned R&R projects, such as the CCWRF Asset Management and Improvements project costs as well as overall costs to operate and maintain the regional wastewater system facilities and infrastructure. Figure 3 represents the trend in reserves for the Wastewater Operations Fund.

Figure 3: Wastewater Operations Fund Reserves by Type



Recycled Water Fund

The Recycled Water Fund includes the operating activities related to the distribution of the recycled water produced in the regional recycling plants, and the capital activities related to expand and maintain the Regional Recycled Water Distribution System for direct use and groundwater recharge.

Total sources of funds are \$39.9 million and \$55.0 million for FY 2023/24 and FY 2024/25. In addition to operating revenue, other sources of funds include interest earnings, miscellaneous reimbursements, inter-fund debt service support for the 2017A Revenue bonds, and inter-fund loan re-payment from the Recharge Water program. Revenues and other funding sources of the Recycled Water fund are summarized below in Table 10.

Table 10: Recycled Water Fund Major Revenues & Other Funding Sources

Major Funding Sources (\$Millions)	FY 2023/24	FY 2024/25	Key Assumptions
Recycled Water Sales	\$19.5	\$19.0	FY 2023/24 adopted direct rate of \$510/AF and Groundwater Recharge (GWR) rate of \$660/AF FY 2024/25 adopted direct rate is \$465/AF and the GWR rate is \$665/AF.
Fixed Cost Recovery	2.4	5.0	Fixed cost recovery revenues are based on each recycled water customers 3 year rolling average of recycled and groundwater use.
Water Connection Fees	7.0	7.2	3,700 new MEU connections are projected for FYs 2023/24 and FY 2024/24. Adopted rates are \$1,896/MEU and \$1,953/MEU for FY 2023/24 and 2024/25, respectively.
Property Tax	3.1	3.2	Property tax receipts allocation of 4% of total property tax receipts.
Grant Proceeds	0.3	13.3	Grants receipts to support the Jurupa Community Services District (JCSD) Intertie capital project.
Other	7.6	7.3	Includes inter-fund loan repayment from the Recharge Water program, interest, miscellaneous other reimbursements, and inter-fund debt service support for the 2017A Revenue bonds.
Total	\$39.9	\$55.0	

Recycled Water Rates

The Recycled Water rates adopted in June 2022 introduced a fixed and variable component structure. The fixed component recovers debt service costs based on each customer three year rolling average of direct and recharge recycled water use. The fixed cost recovery budget for FY 2023/24 is \$2.4 million and \$5.0 million for FY 2024/25. Recycled water deliveries projections are 34,000-acre feet (AF) for each budget year. Recycled Water sales are estimated to generate revenues of \$19.5 million and \$19.0 million, for FYs 2023/24 and 2024/25. Adopted rates and estimated deliveries are summarized in Appendix Table A5.

One Water Connection Fee

Water connection fee revenues are collected to support capital investments in the Agency's regional water distribution system. The projections are \$7.0 million for FY 2023/24 and \$7.2 million for FY 2024/25. Water connection fee rates are set per meter equivalent unit (MEU). One MEU is equivalent to a 5/8" and 3/4" meter size (standard residential meter size). These revenue projections are based on 3,700 new MEU per year. One Water Connection Fee rates are reported in Appendix Table A6.

Total expense in FY 2023/24 and FY 2024/25 are projected to be \$49.9 and \$55.2 million, respectively. Major expenses for the Recycled Water fund include debt service, operating costs, and capital project expense. Operating costs include employment, pumping costs, non-capital projects, and the portion of the groundwater recharge operating costs not reimbursed by Chino Basin Watermaster (CBWM). The projected biennial budget expense and other uses of funds for the Recycled Water fund are summarized in Table 11.

Table 11: Recycled Water Fund Major Expenses & Other Uses of Funds

Major Uses of Funds (\$Millions)	FY 2023/24	FY 2024/25	Key Assumptions
Operating Expenses	\$16.1	\$17.6	Includes employment, professional fees, materials and supplies, pumping costs, a portion of the groundwater recharge operations expense, and O&M project costs.
Capital Improvement Plan (CIP)	14.5	20.7	See Table 12 for a summary of major capital projects.
Debt Service	15.2	14.5	Includes principal and interest costs for outstanding bonds, SRF loans, and inter-fund loan repayments to the Regional Wastewater Capital fund.
Other	4.1	2.4	Inter-fund transfers for water connection fees in support of the RRWDS*, and capital and operating support to the Administrative Services and Recharge Water funds.
Total	\$49.9	\$55.2	

*Regional Recycled Water Distribution System

Annual debt service costs include principal, interest, and financial fees for SRF loans, 2017A and 2020A Revenue Bonds, and interfund loan repayment to the Regional Wastewater Capital fund. Debt service is estimated to be \$15.2 million in FY 2023/24 and \$14.5 million in FY 2024/25. Re-payments of the \$13.5 million inter-fund loan due to the Regional Wastewater Capital began in FY 2022/23, and final re-payment of inter-fund loans is scheduled for FY 2024/25. A summary of inter-fund loans and repayment schedules is provided in Appendix Table A7.

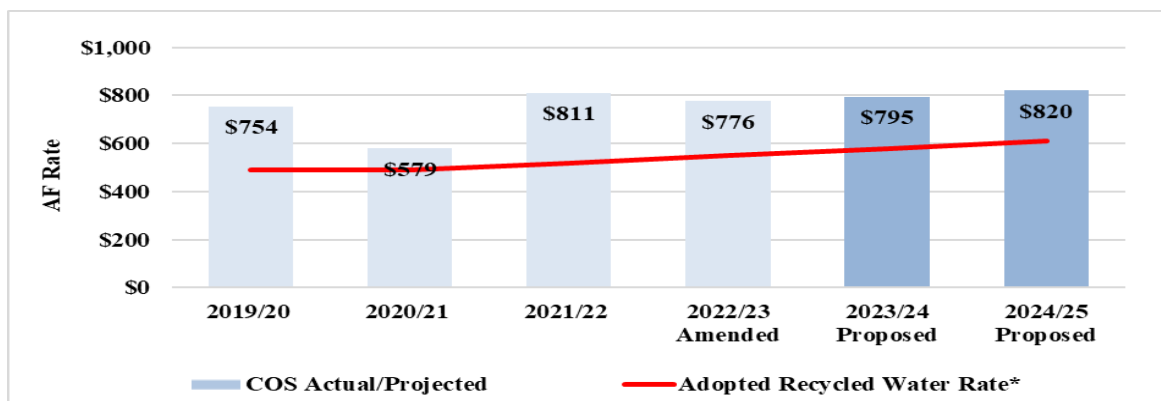
Table 12: Recycled Water Fund Major Capital Projects

Major Projects (\$Millions)	FY 2023/24	FY 2024/25	FY 2025/26 to FY 2032/33	TYCIP Total
6 TAFY Advanced Water Purification Facility	\$0.5	\$1.6	\$96.3	\$98.4
Injection Facilities	2.1	2.7	84.8	89.6
Recycled Water Interconnection to City of Rialto	0.3	5.2	47.5	53.0
Recycled Water Connections to Jurupa Community Services District	0.3	1.0	25.7	27.0
RP-4 Chlorine Contact Basin Cover Repair	2.2	2.8	-	5.0
Etiwanda interceptor Grade Break	2.8	1.4	-	4.2
Recycled Water SCADA migration	0.6	2.0	1.8	4.4
1299 Reservoir repairs	1.7	0.2	-	1.9
All Other Capital Projects	4.0	3.8	60.8	68.60
Total	\$14.5	\$20.7	\$316.9	\$352.1

Cost of Service Review

A key Agency objective is to establish rates which fully recover the cost of providing service. As shown in Figure 4 the estimated cost of service for FY 2023/24 is \$795/AF, and \$820/AF for FY 2024/25. The increase in cost-of-service rate is driven by increasing operating and maintenance costs caused by inflationary price increases of utilities, chemicals, and wages. Projections and underlying assumptions are reviewed and updated each year as part of the budget process. The next cost of service study will generate rates for Fiscal Year 2025/26.

Figure 4: Recycled Water Cost of Service

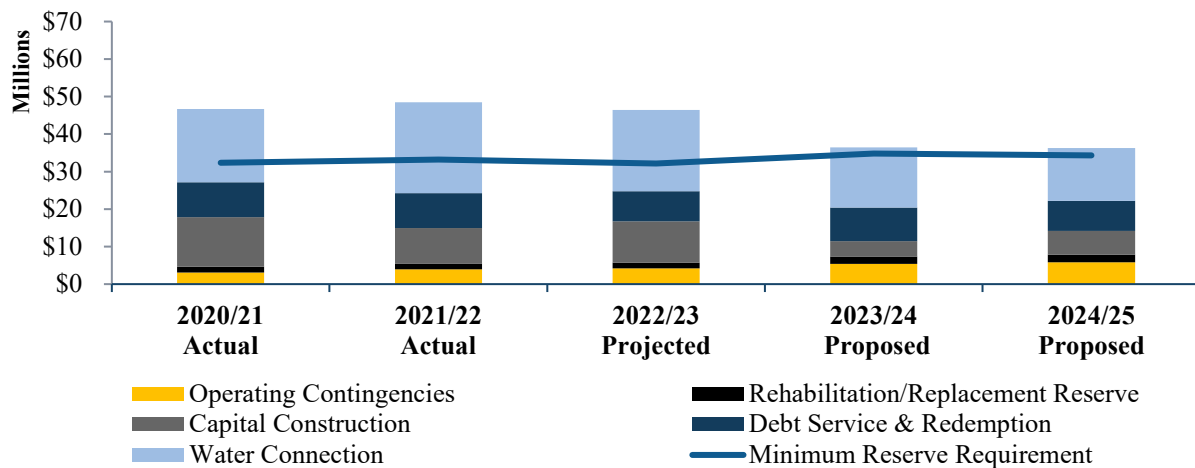


*Adopted Recycled Water rate includes Fixed Cost Recovery equivalent amount

Recycled Water Fund Reserves

The Recycled Water fund projected ending fund balances for FY 2023/24 and FY 2024/25 is \$36.5 million and \$36.3 million, respectively. The projected reserve balance decrease is largely due to increased capital project costs. The Agency will pursue additional federal and state grants along with low interest financing to support the implementation of the recycled water projects and to maintain reserve levels above the minimum requirements. Projected ending fund balances are reported below in Figure 5.

Figure 5: Recycled Water Fund Reserve by Type



Conclusion

This proposed biennial budget dealt with many inflationary challenges, program expansions, and critical capital project requirements to maintain the Agency's business goals.

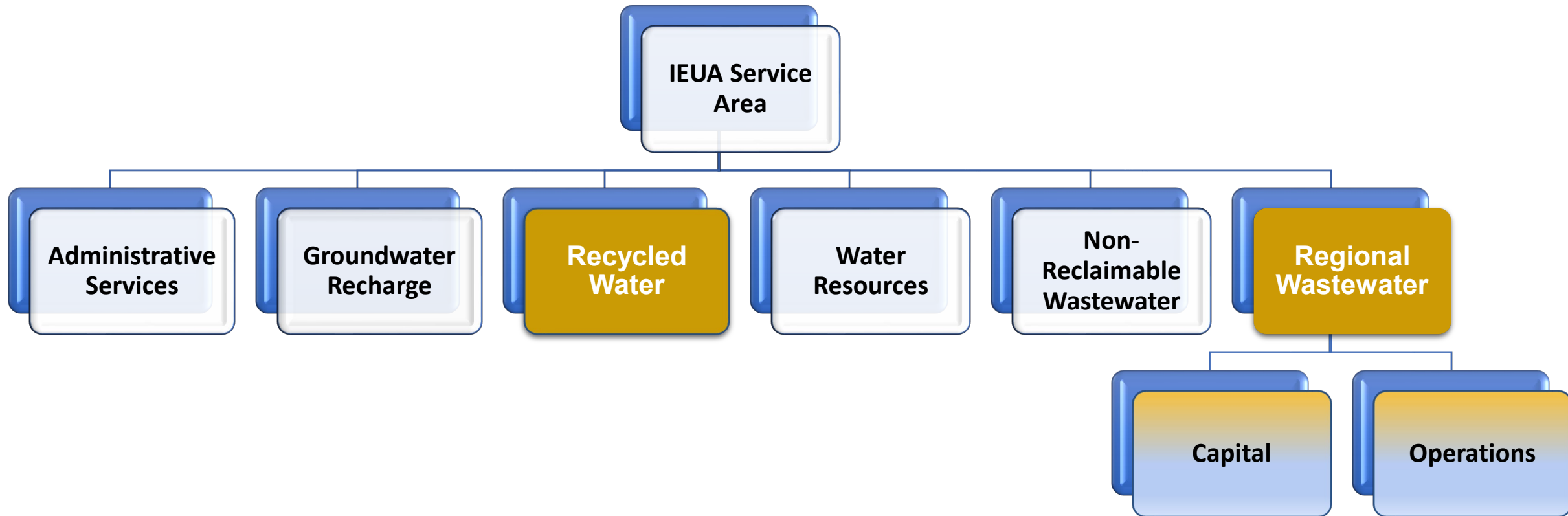
During the budget period, the Agency will continue to work towards the completion of the RP5 Expansion project and the Return to Sewer study to set up the parameters necessary to adjust the EDU monthly rate and the wastewater connection fees through the corresponding cost of service studies. Additionally, the proposed biennial budget supports increased human capital to ensure fulfillment of Agency objectives and organization effectiveness. Achieving these objectives will ensure that the Agency can continue its commitment to delivering essential high-quality services in a cost-effective manner, supporting the region's economic development, and maintaining the Agency's fiscal health.

Review of the Proposed Biennial Budget for Fiscal Years 2023/24 and 2024/25 for the Regional Wastewater and Recycled Water Programs are consistent with the IEUA Business Goals of Fiscal Responsibility, Water Reliability, Wastewater Management, Environmental Stewardship, and Business Practices

FY 2023/24 and 2024/25 Biennial Budget Overview of the Regional Wastewater and Recycled Water Programs

Alex Lopez
Budget Officer
April/May 2023

Fund Structure



Key Assumptions

- Inflation driven increases operating expenses: Utilities and chemicals
- Staffing to support Agency objectives: RP-5 Expansion on-line, TYCIP
- Capital projects based on the Proposed Ten-Year Capital Improvement Plan (TYCIP) and Ten-Year Forecast (TYF) FYs 2024-2033
 - Support growth, asset management, and regulatory compliance
 - Financing with debt, low interest federal and state loans, while pursuing grant opportunities
- Maintain property tax allocation by fund
- Proposed rate increases for Regional Wastewater program
- Recycled Water rates adopted May 2022 for FYs 2023/24 and 2024/25

Rates and Fees

	Proposed		Adopted			
Fund	Wastewater Operations	Wastewater Capital	Recycled Water			
As of July 1	Monthly Sewer (EDU)	Wastewater Connection Fee (EDU)	Fixed Cost Recovery ***	Recycled Water Direct Use (AF)***	Recycled Water Recharge (AF)***	One Water Connection Fee (MEU)**
FY 2020/21*	\$20.00	\$6,955	-	\$490	\$550	\$1,684
FY 2021/22	\$21.22	\$7,379	-	\$520	\$580	\$1,787
FY 2022/23	\$21.86	\$7,600	\$1.11M	\$516	\$616	\$1,841
FY 2023/24	\$23.39	\$8,132	\$2.36M	\$510	\$660	\$1,896
FY 2024/25	\$24.79	\$8,620	\$4.96M	\$465	\$665	\$1,953

*On May 6, 2020, the Board approved to defer rate increases and maintain the rates unchanged for FY 2020/21

**Rates for FYs 2020/21 through 2024/25 adopted July 2020

*** Rates for FYs 2022/23 through 2024/25 adopted June 2022

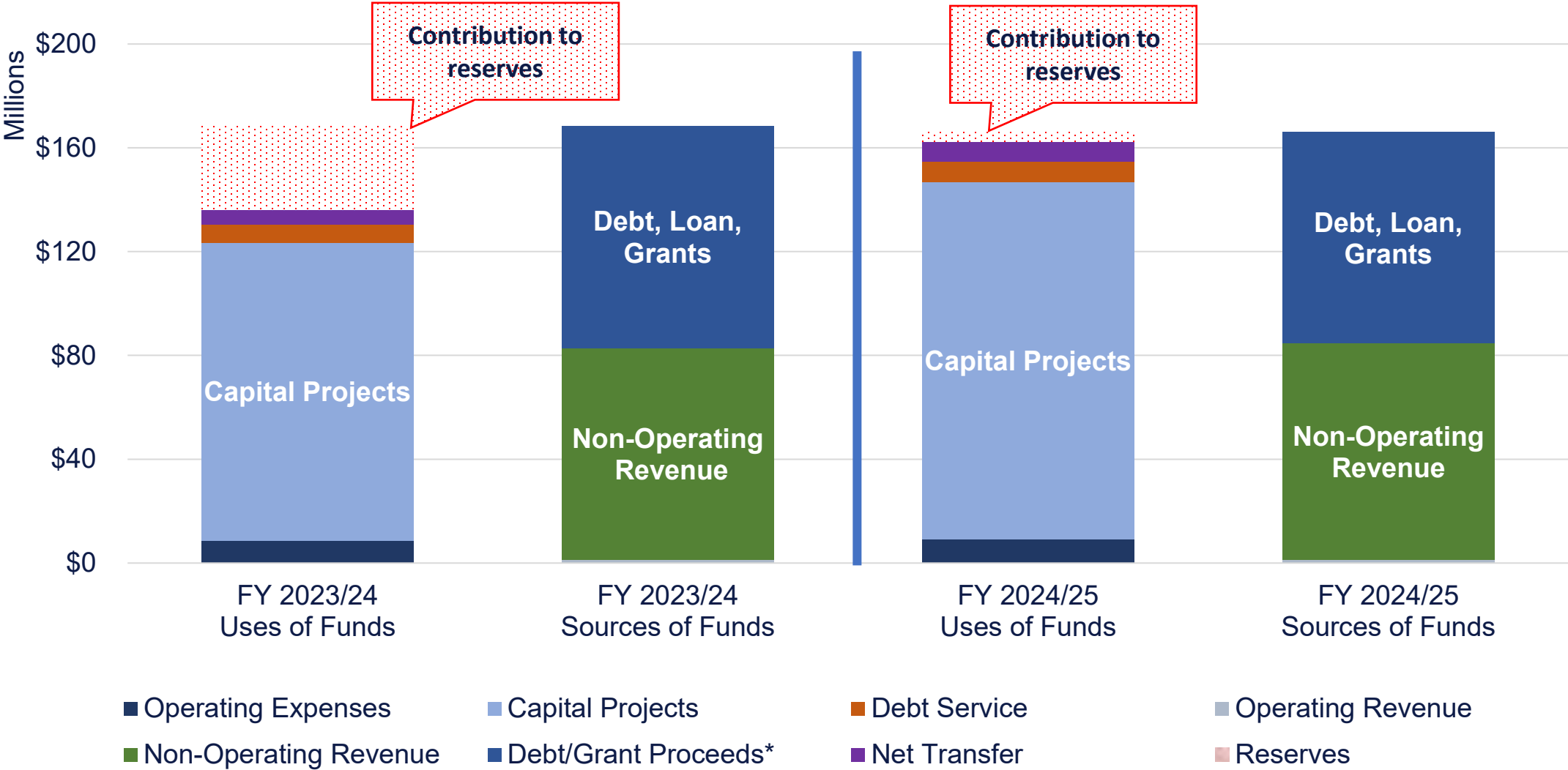
Property Tax Allocation

- Maintain property tax fixed percent allocation

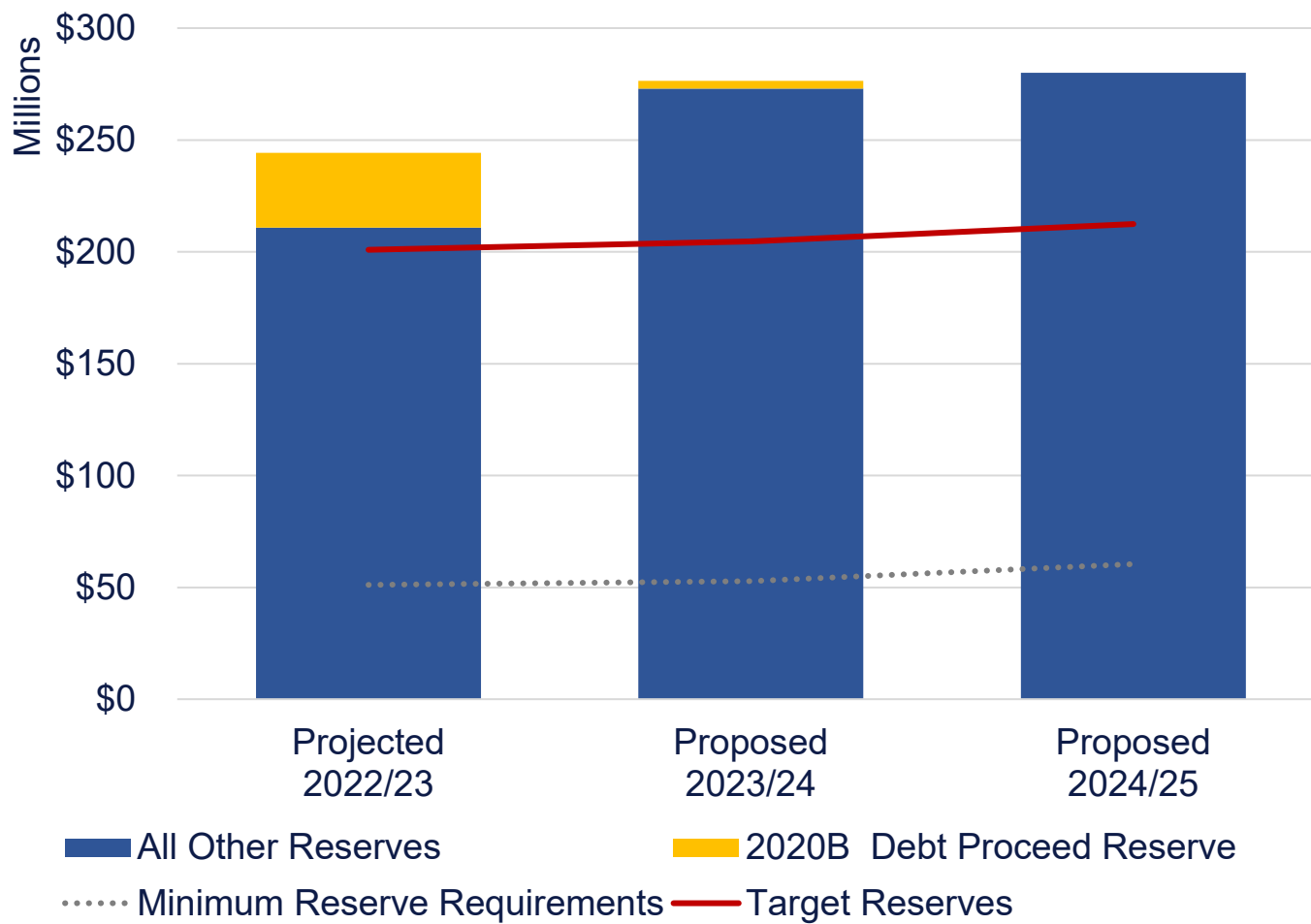
Fund	Current Allocation Fixed %	FY 2022/23 Projected Actual	FY 2023/24 Projected	FY 2024/25 Projected
Regional Wastewater Capital	65%	\$50.4M	\$51.4M	\$52.2M
Regional Wastewater Operations	23%	\$17.8M	\$18.2M	\$18.5M
Recycled Water	4%	\$2.9M	\$3.1M	\$3.2M
Administrative Services	4.5%	\$3.5M	\$3.5M	\$3.6M
Water Resources	3.5%	\$2.7M	\$2.8M	\$2.8M
Total		\$77.3M	\$79.0M	\$80.3M

Wastewater Capital Improvement Fund

Total Sources and Uses of Funds



Wastewater Capital Improvement Fund Fund Reserves

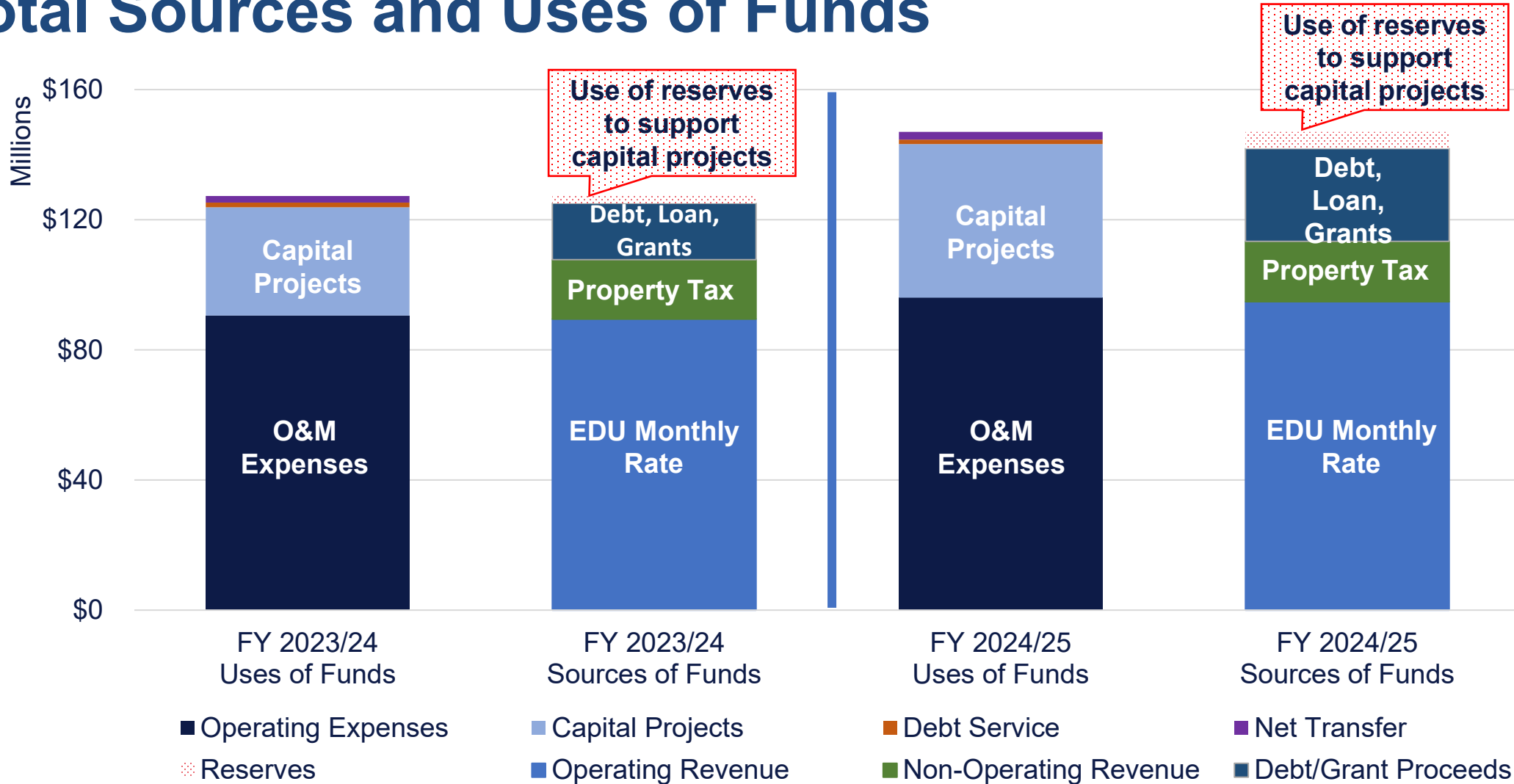


Stable reserves for planned capital project expenditures:

- Use of 2020B Revenue Notes (RP-5 Expansion)
- Use of connection fees
- Use of Property Tax
- State loans and grants

Wastewater Operations & Maintenance Fund

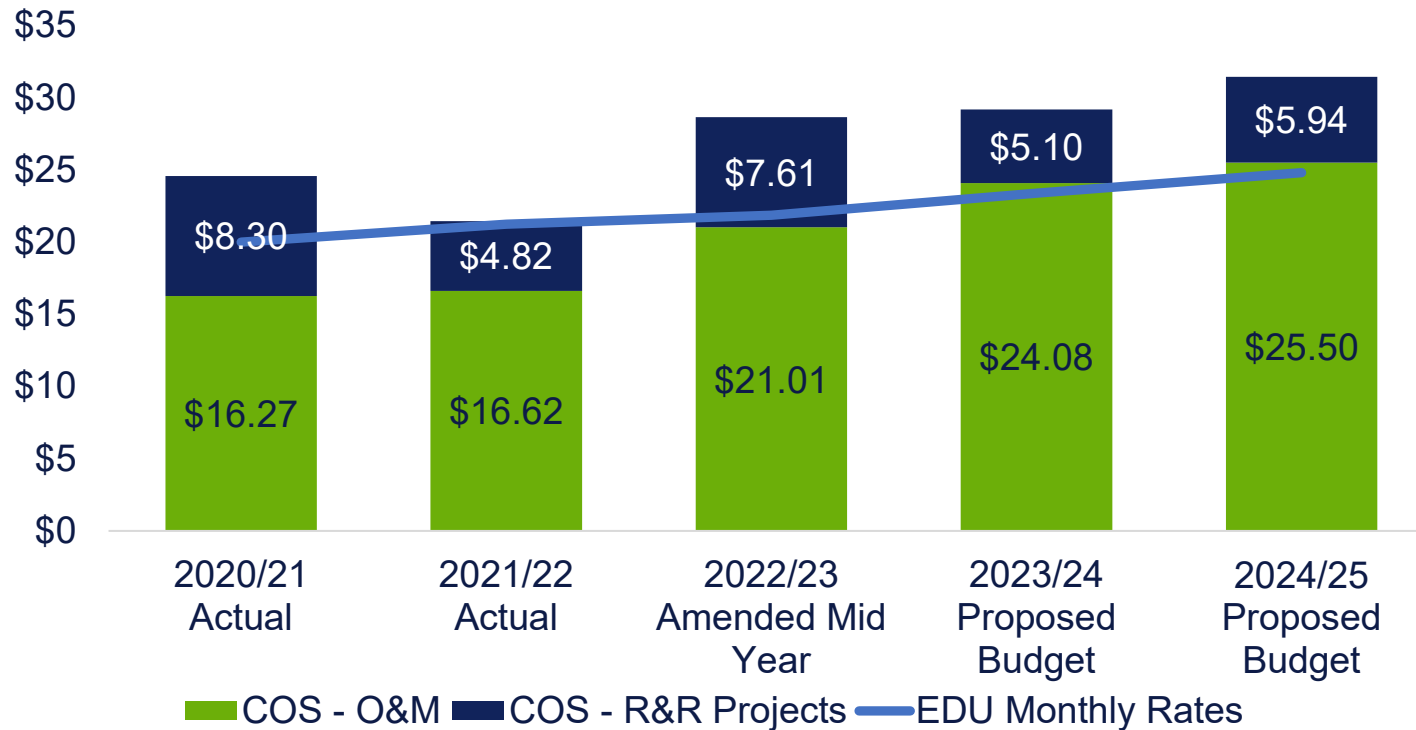
Total Sources and Uses of Funds



Wastewater Operations & Maintenance Fund

Cost of Service/EDU

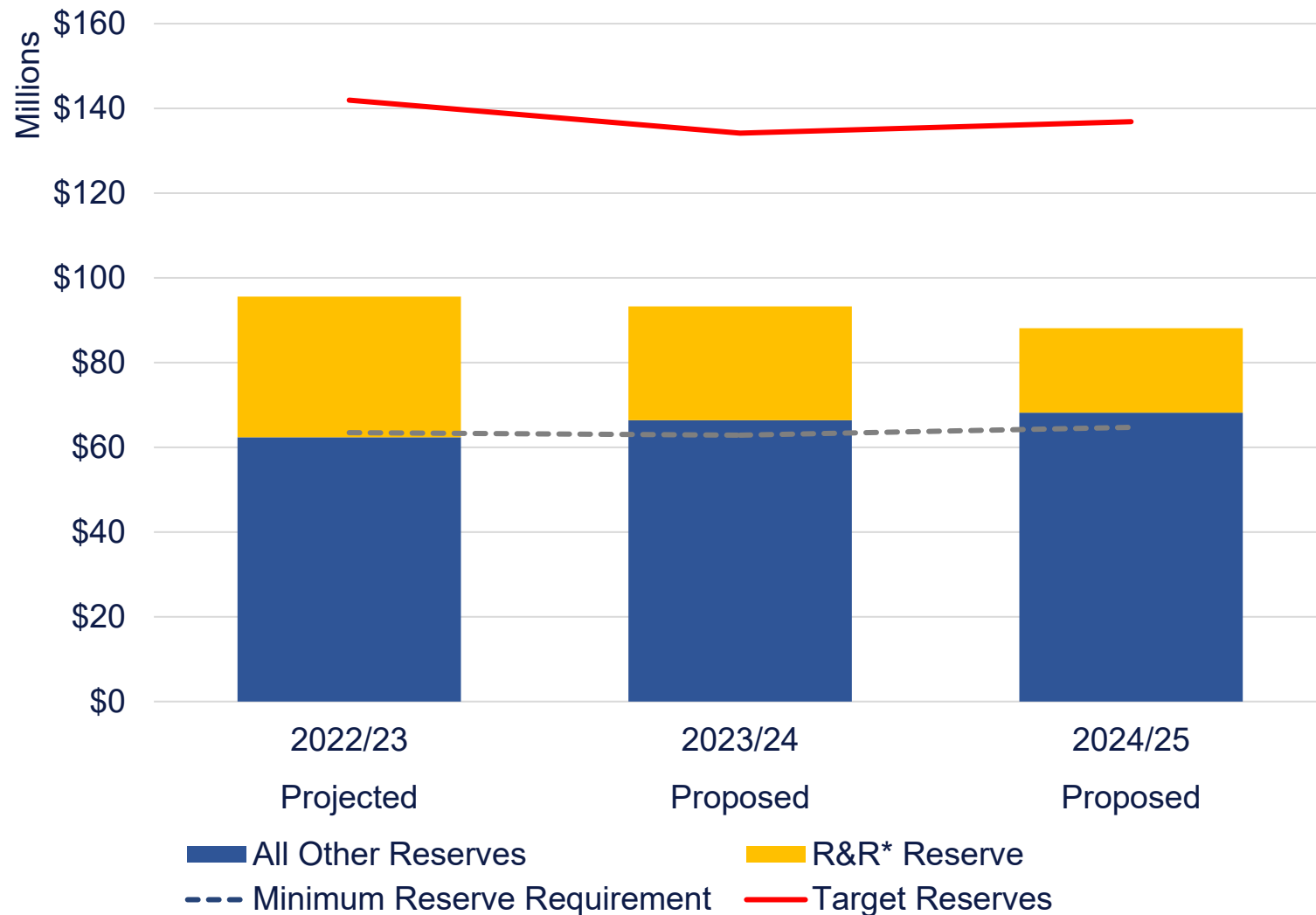
	2022/23 Adopted	2023/24 Proposed	2024/25 Proposed
Monthly EDU Rate	\$21.86	\$23.39	\$24.79



- COS components include O&M, R&R Projects, and Debt Service
- Sewer use study underway
- Replacement and rehabilitation (R&R) project costs not recovered by rates will be supported by property taxes and reserves

Wastewater Operations & Maintenance Fund

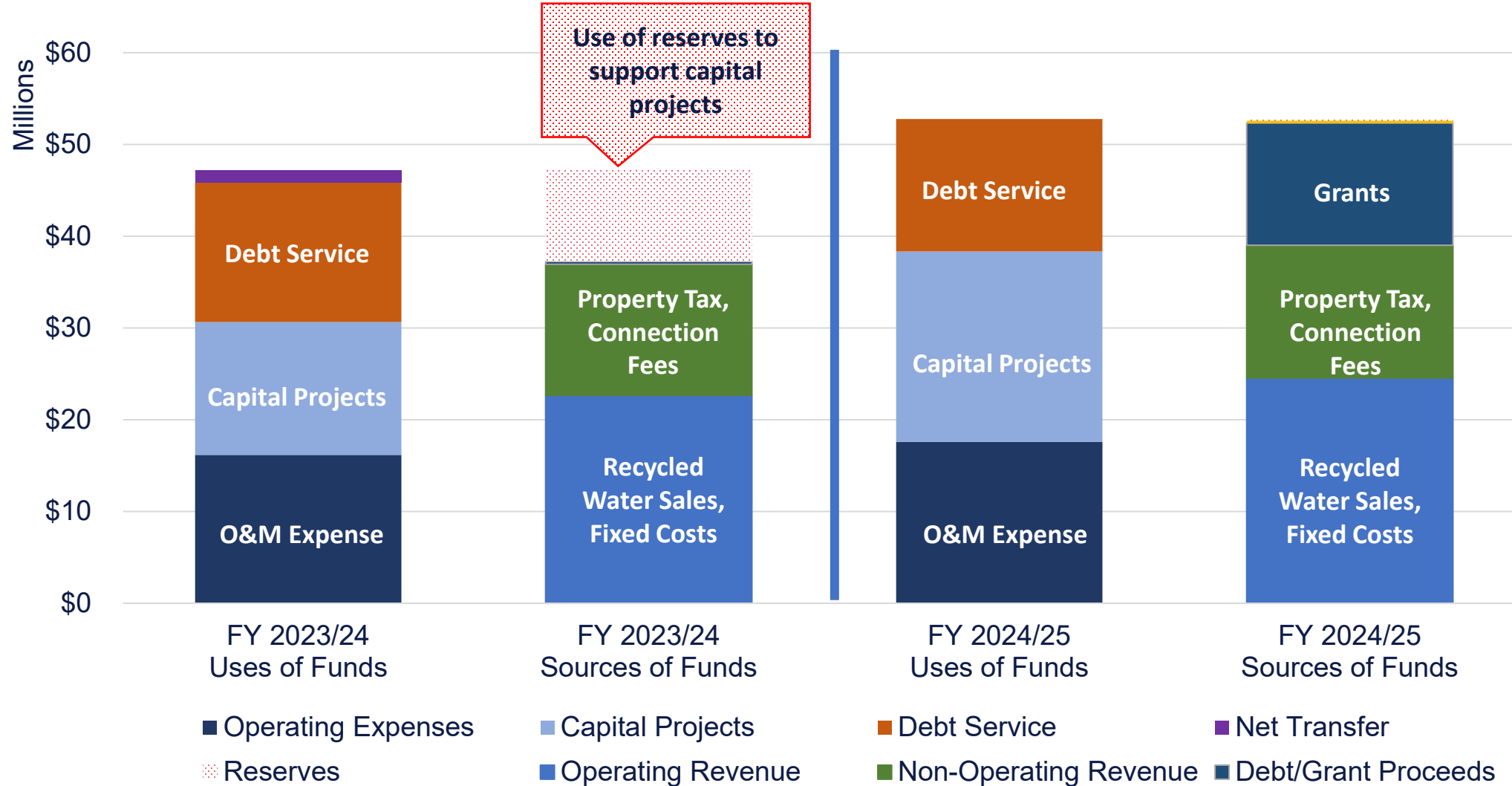
Fund Reserves



**Stable reserves after property taxes
and reserves to support planned
R&R* capital projects**

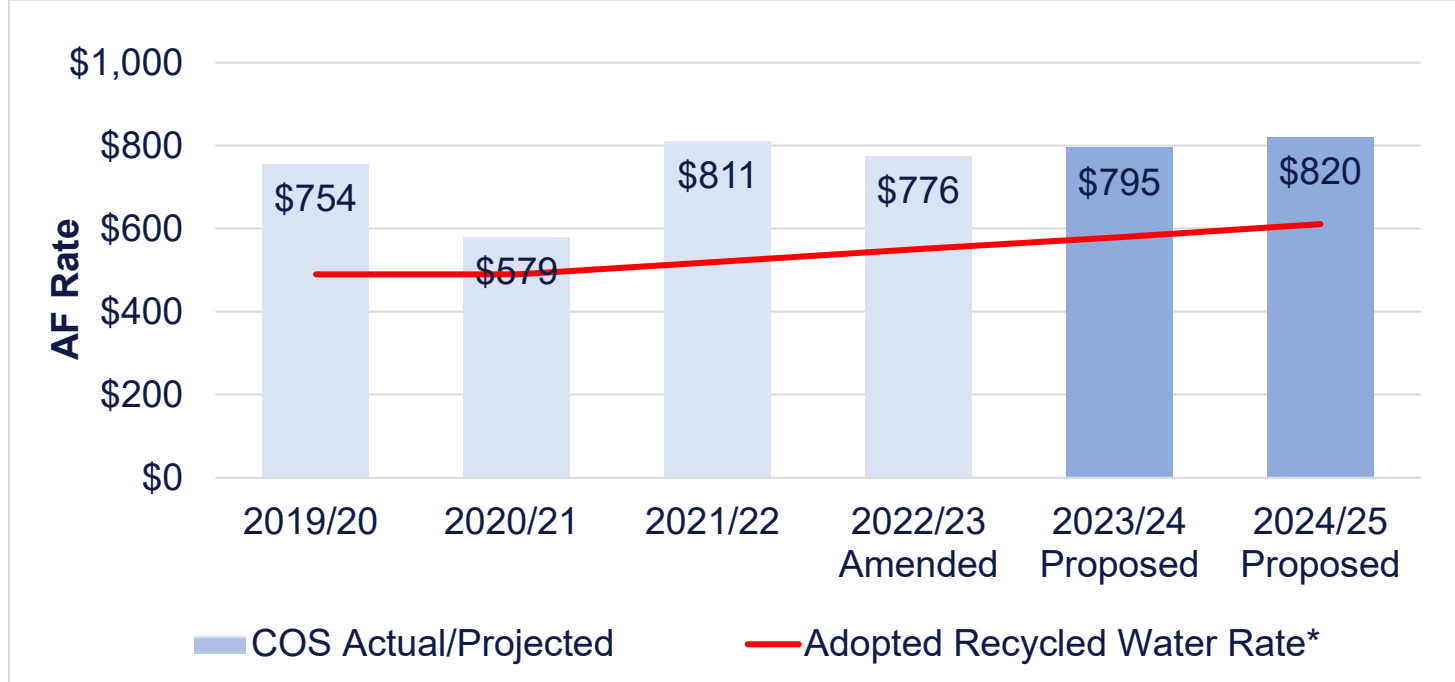
Recycled Water Fund

Total Sources and Uses of Funds



Recycled Water Fund Cost of Service/AF

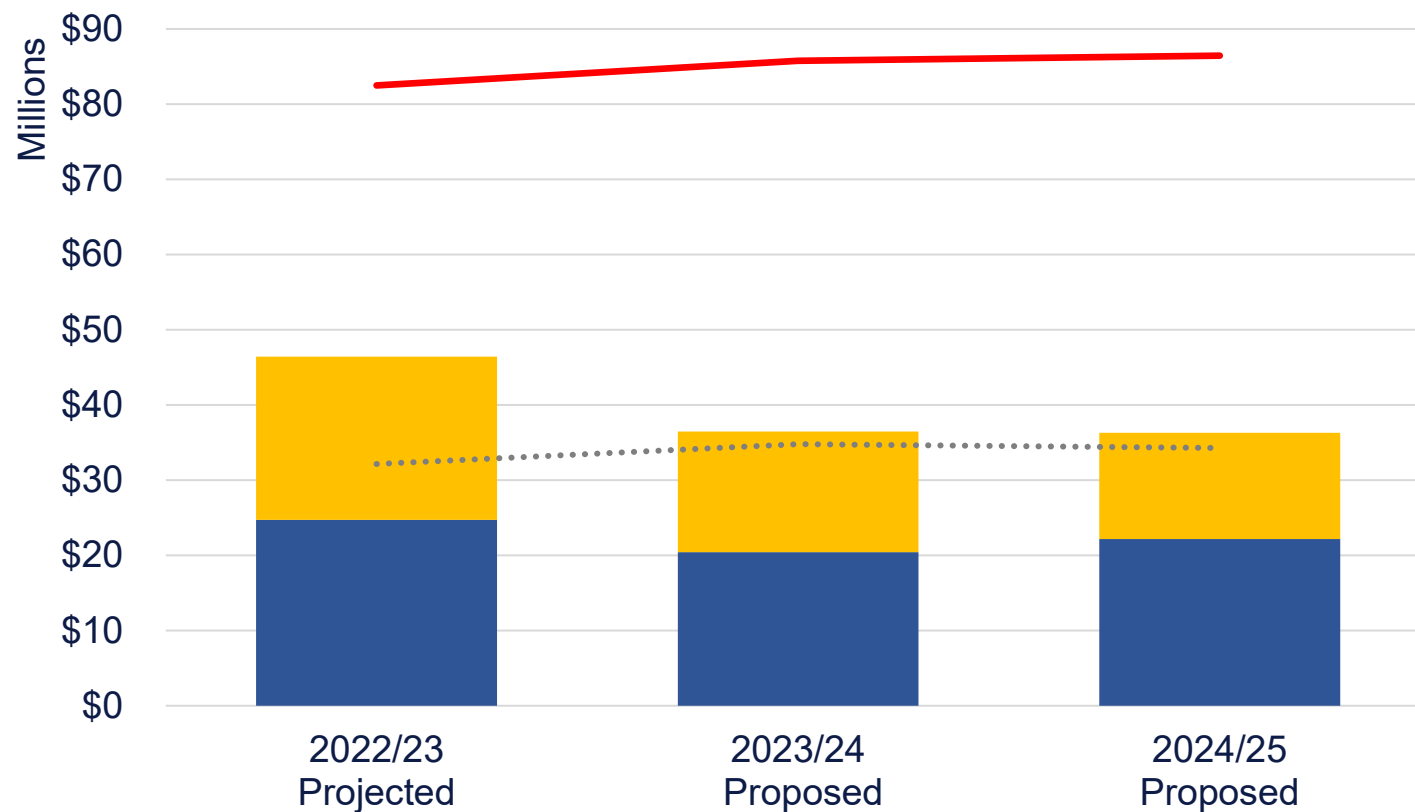
Recycled Water Acre Foot Rate	2022/23 Adopted	2023/24 Adopted	2024/25 Adopted
Direct Delivery	\$516	\$510	\$465
Groundwater Recharge	\$616	\$660	\$665
Fixed Cost Recovery	\$1.1M	\$2.4M	\$5.0M



- COS components include O&M, CIP, and Debt Service
- June 2022 Recycled Water Rate Structure changed to include Fixed Cost Recovery to support debt service costs
- COS shortfall is supported by Fixed Cost Recovery and reserves

*Adopted Recycled Water rate includes Fixed Cost Recovery equivalent amount

Recycled Water Fund Reserves



Projected decrease to support planned capital project costs. The Agency will continue to pursue federal and state grants to support implementation of projects and maintain reserve levels above the minimum requirements

All Other Reserves
 Water Connection Reserve

Minimum Reserve Requirement
 Target Reserve

Take-Away

Inflation driven operating costs up, mainly utilities and chemicals.

Maintain current property tax allocation.

Proposed Wastewater rates for FYs 2023/24 and 2024/25.

Adopted Recycled Water rates through FY 2024/25.

CIP emphasis on RP-5 Expansion and R&R of aging assets. Financing with low interest federal and state loans, while pursuing grants opportunities.

Increase in staffing to support Agency objectives.

Biennial Budget Review and Approval Timeline

Month	Budget Item	IEUA Committee	IEUA Board	Regional Technical	Regional Policy
Mar 2023	FY 2023/24 – 2024/25 Wastewater Cost of Service and Proposed Rates workshop		3/01/23	3/30/23	4/6/23
Apr 2023	Adoption of Service Rates (EDUs), Wastewater Connection Fees, and Extra-Territorial Service Charges	4/12/23	4/19/23		
	Regional Program Budgets (Wastewater and Recycled Water) Information Item	4/12/23	4/19/23	4/27/23	5/4/23
May 2023	Non-Reclaimable Wastewater, Groundwater Recharge, Water Resources, and Administrative services Budgets	5/10/23	5/17/23		
Jun 2023	Biennial Budget, Rate Resolutions, and TYCIP	6/14/23	6/21/23	5/25/23	6/1/23

Questions



**INFORMATION
ITEM**

2B



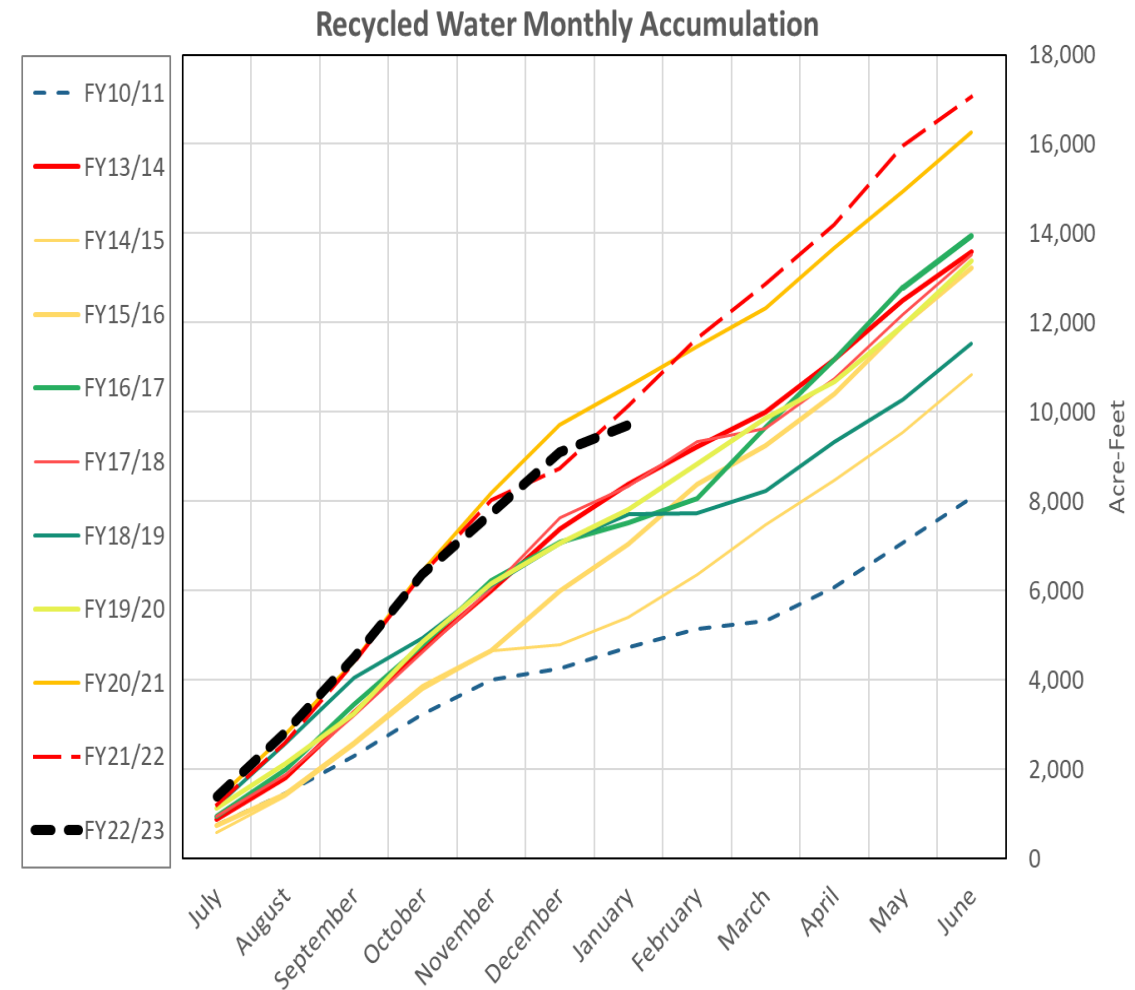
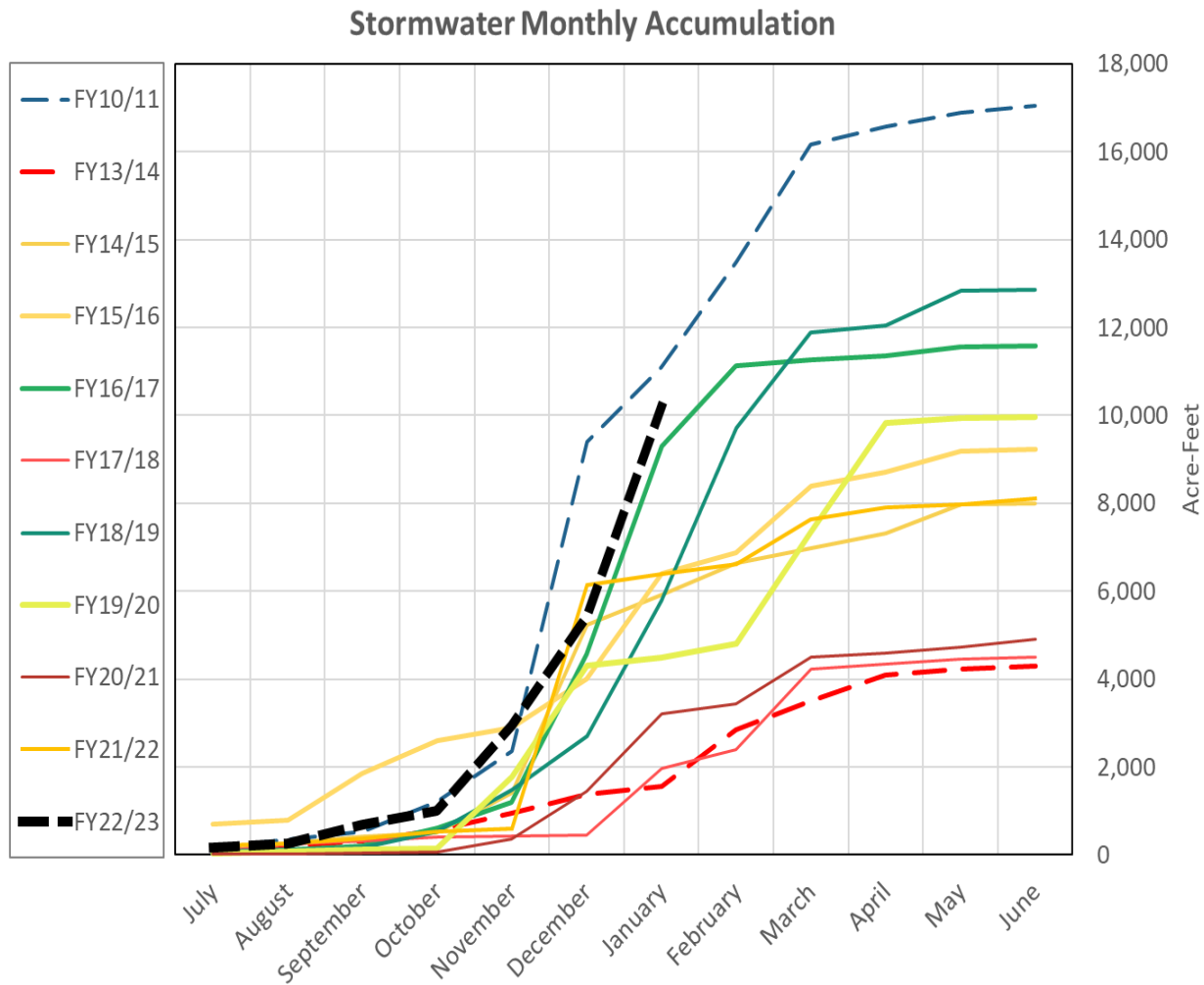
Recycled Water Groundwater Recharge Update

Steven Smith

Acting Groundwater Recharge Coordinator

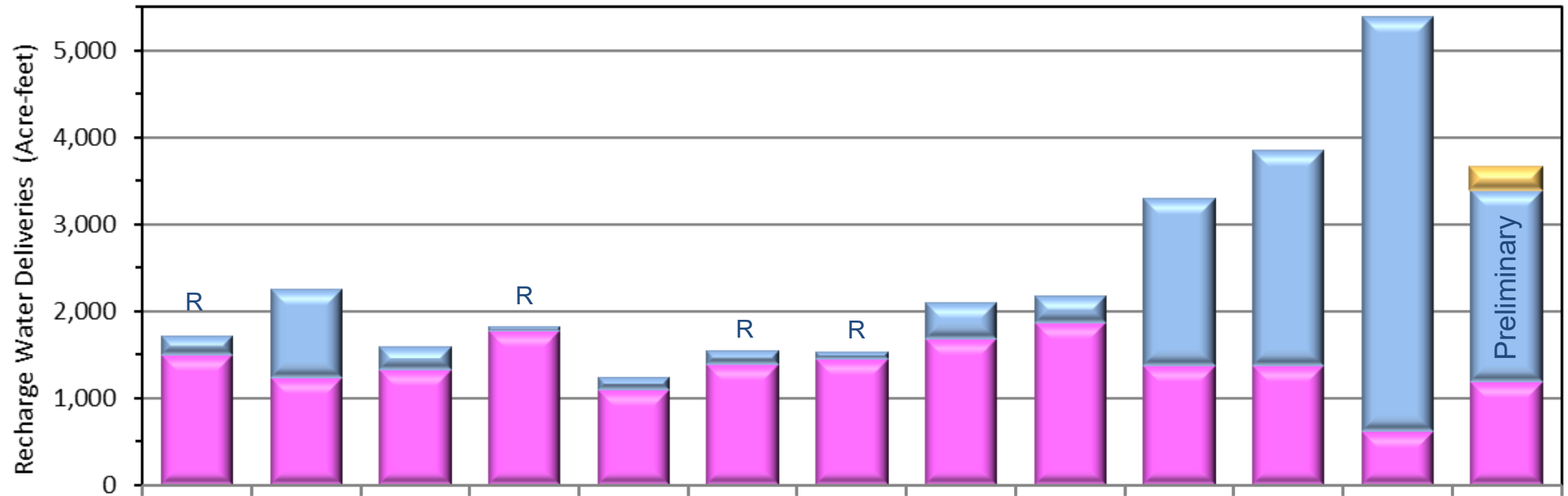
April 2023

Annual Recharge Monthly Accumulation



Groundwater Recharge Deliveries – Past 12 Months

R – Record Monthly RW Recharge in
February, May, July and August 2022



	Feb 2022	Mar 2022	Apr 2022	May 2022	Jun 2022	Jul 2022	Aug 2022	Sep 2022	Oct 2022	Nov 2022	Dec 2022	Jan 2023	Feb 2023
■ MWD and other Imported Water	0.0	0.0	0.0	0.0	0.0	0.0	0.0	0.0	0.0	0.0	0.0	0.0	281.6
■ Stormwater and Local Runoff (excluding Non-Replenishment)	222.1	1,022.1	272.7	66.1	145.6	166.0	94.4	429.0	325.4	1,941.8	2,486.0	4,786.7	2,216.4
■ Recycled Water	1,491.7	1,231.6	1,327.2	1,761.7	1,091.2	1,379.8	1,448.3	1,680.7	1,862.6	1,366.1	1,368.7	606.0	1,174.2

Preliminary Storm Capture Estimates

Month	Storm Capture (Preliminary)
November	1,948 AF
December	2,486 AF
January	4,829 AF
February (Preliminary)	~2,000 AF

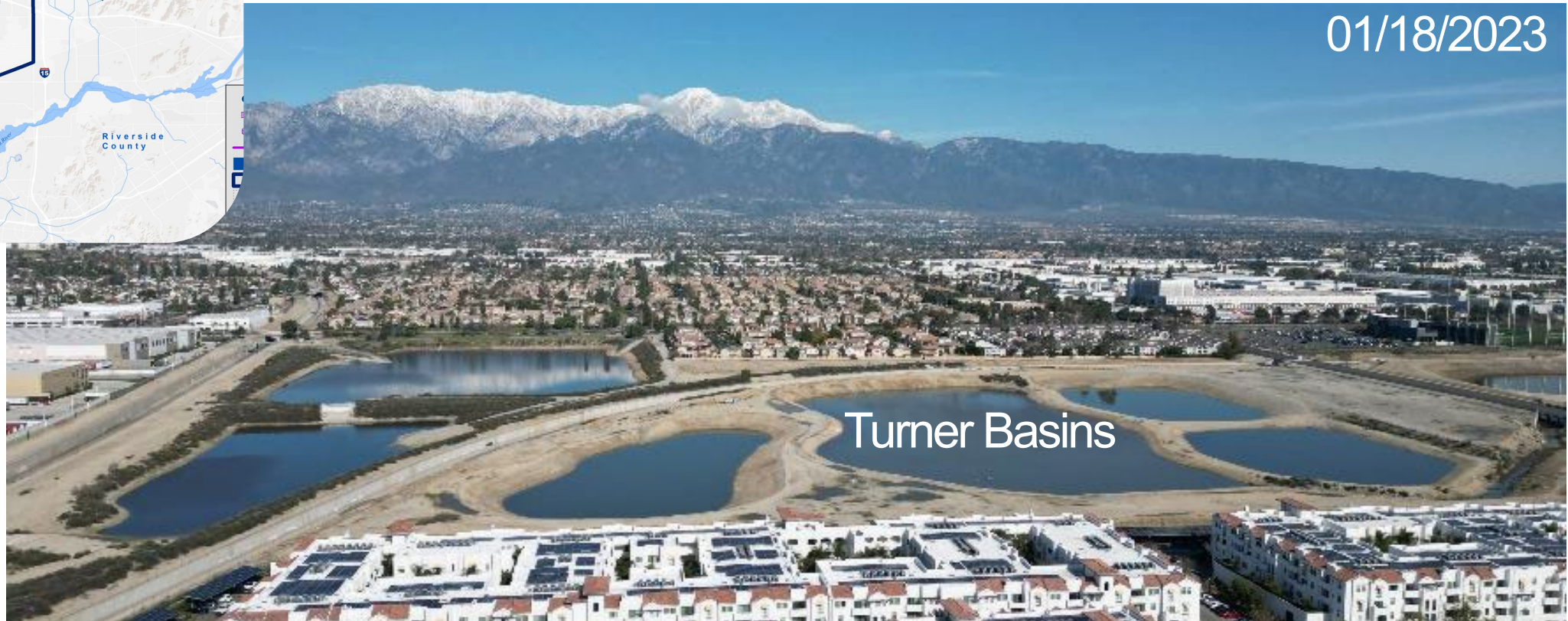
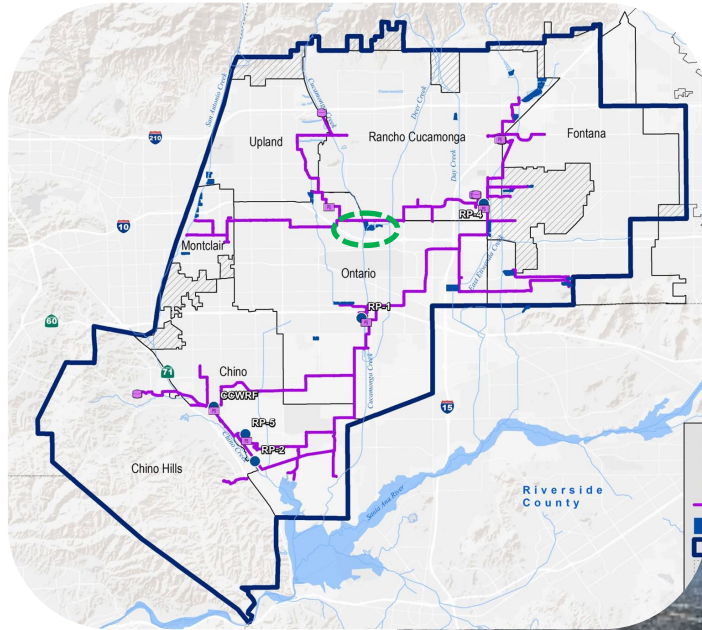


Imported water deliveries

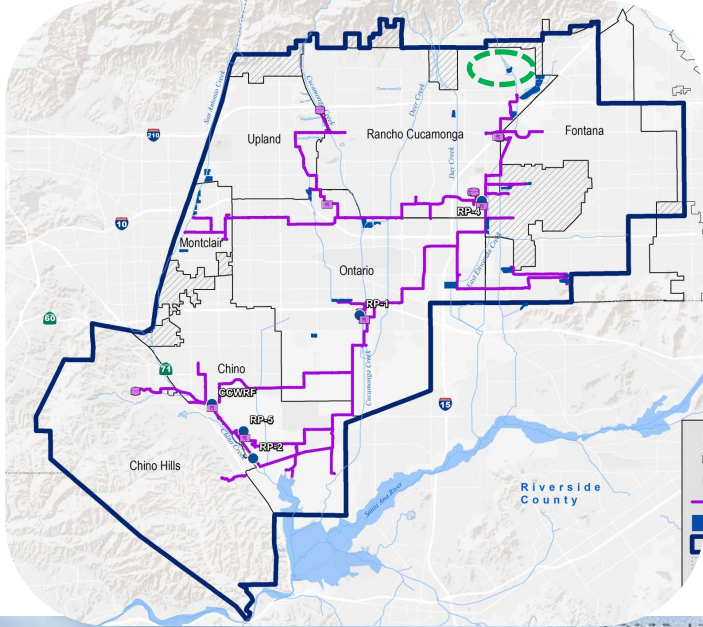
- SAWCO – San Antonio Creek
- CVWD – West Cucamonga Creek
- MWD – TBD



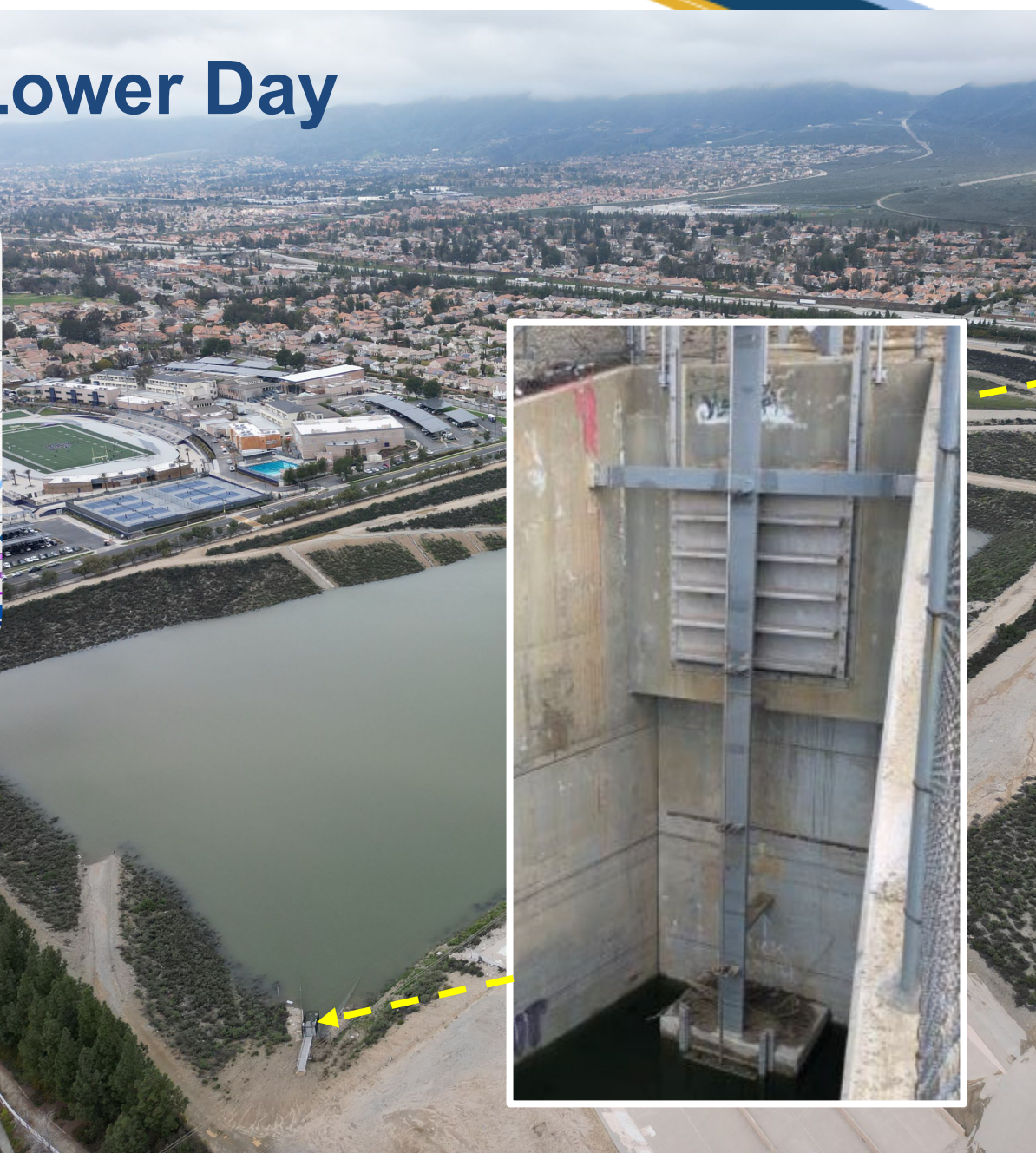
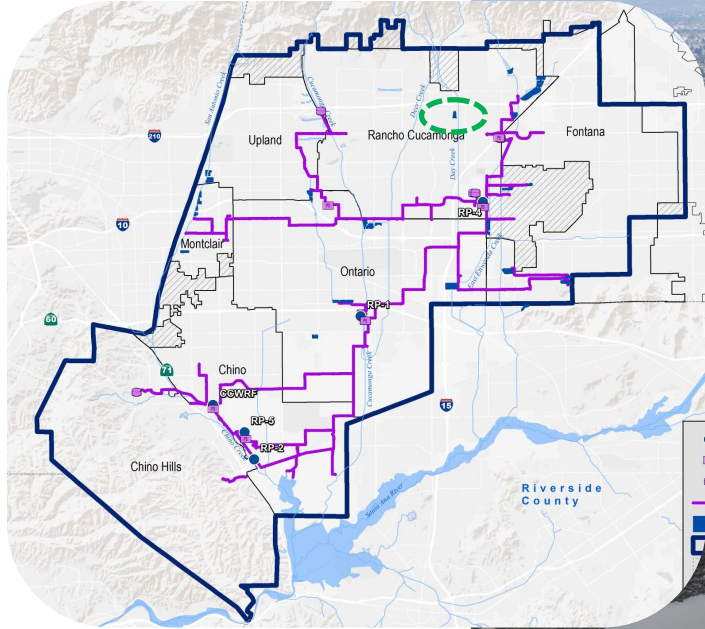
Storm Capture – Turner Basins



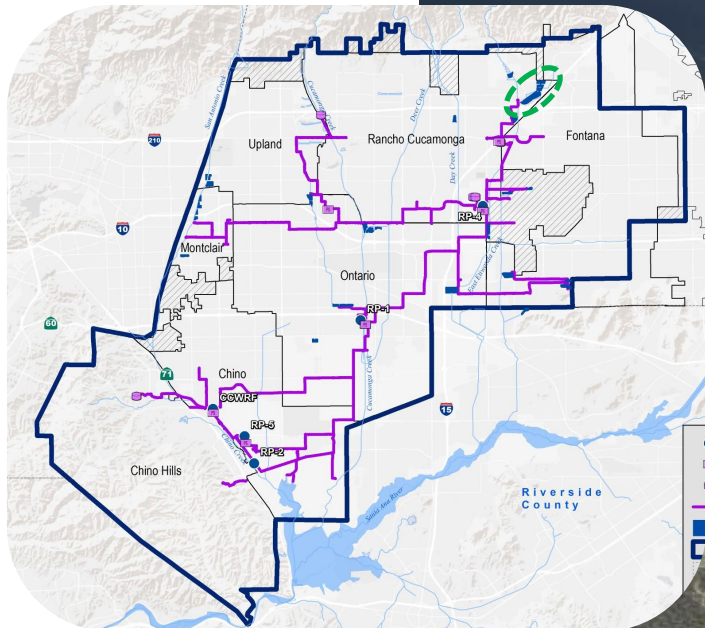
Storm Capture – Etiwanda Debris Basin



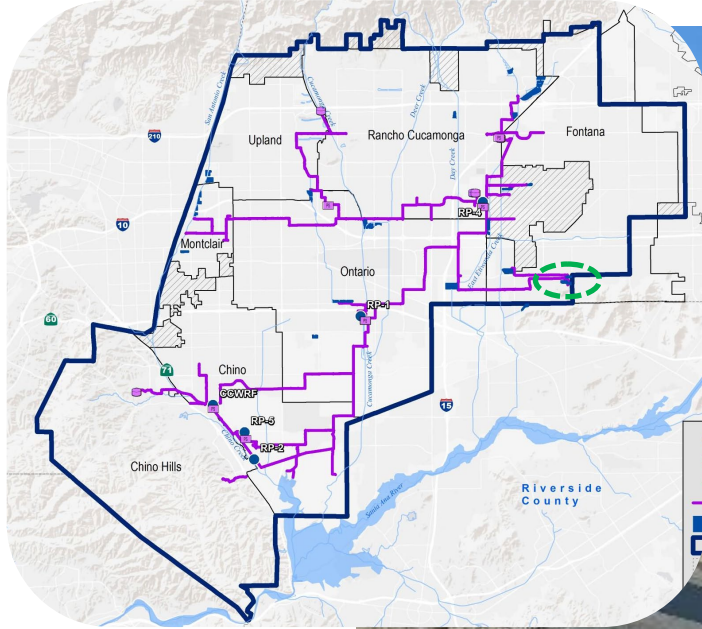
Storm Capture – Lower Day



San Sevaine 3 Muddy Inflows



RP3 Trash Net Installation



New Recharge Basin Use – RP3 Cell 2R

12/07/2022 14:26



Upcoming Maintenance Projects

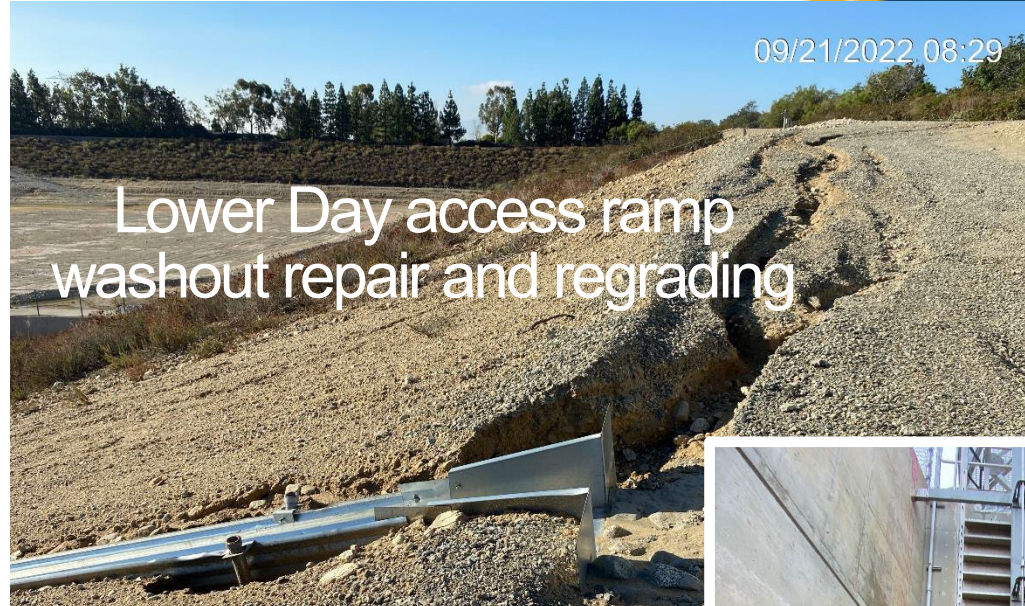
11/30/2022 10:29

Erosion near San Sevaine 5 Pump Vault



09/21/2022 08:29

Lower Day access ramp
washout repair and regrading



11/30/2022 10:28



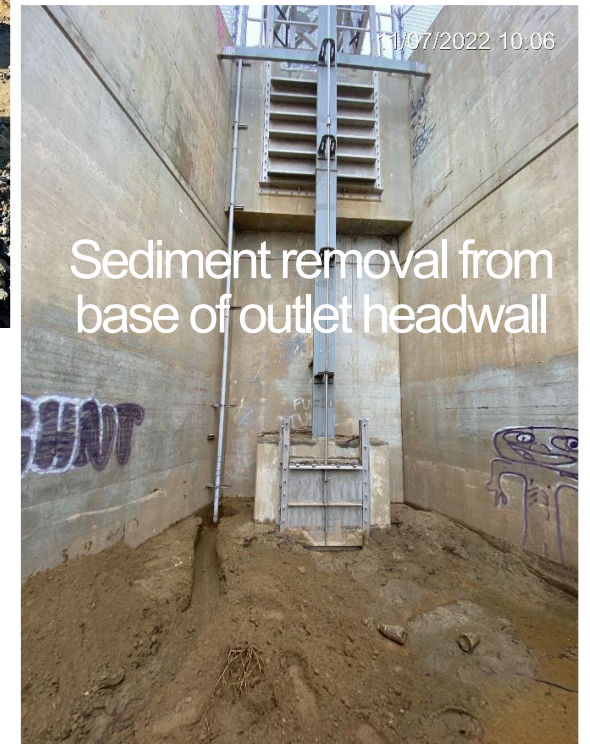
02/02/2021

Turner 1 and RP-3
Rubber Dam Replacement



11/07/2022 10:06

Sediment removal from
base of outlet headwall



Questions?



**INFORMATION
ITEM**

2C

Operations & Maintenance Department Quarterly Update

Jeff Ziegenbein

Acting Director of Operations and Maintenance

April 2023

Operations & Maintenance Department



- 4 Units, Training Coordinator
- 145 employees
- Work directly with every Department and Unit across the Agency

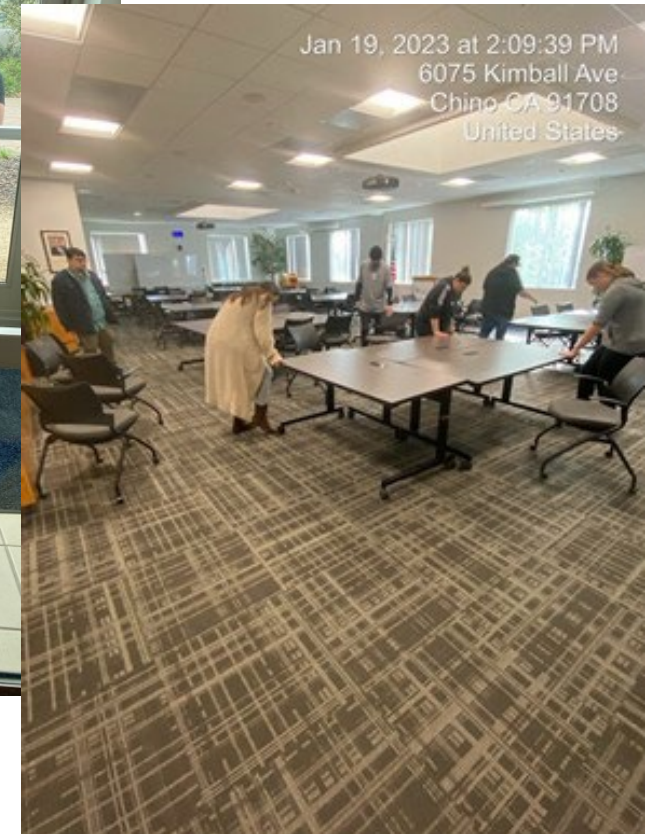
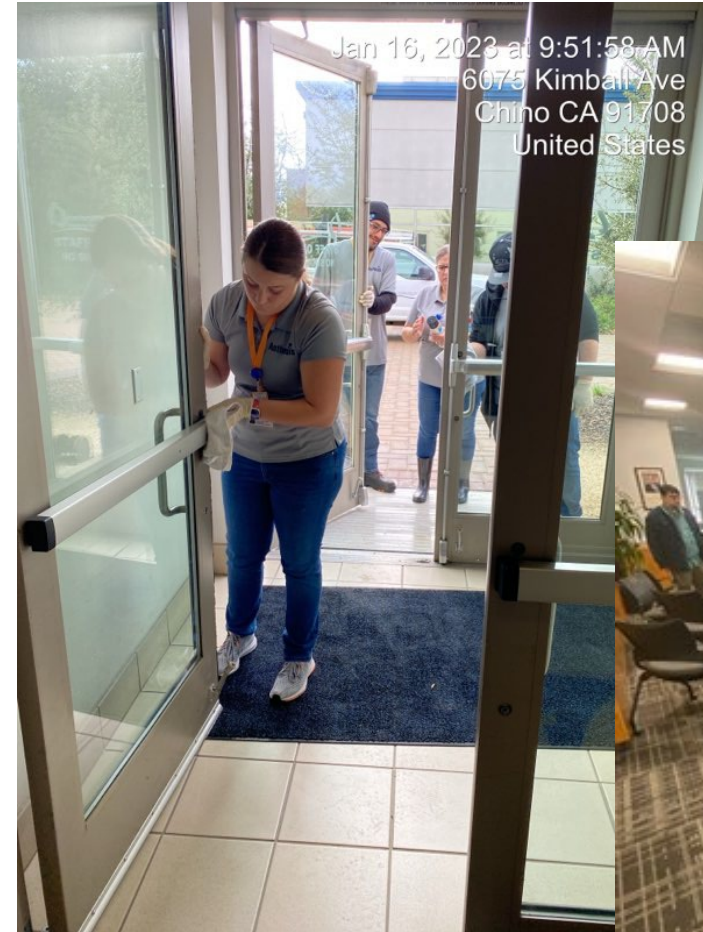
Facilities & Water System Programs Unit

- 24 staff
- Manages:
 - Sewer Collection System
 - Cleaning & CCTV target of 2,754ft weekly
 - CWEA SARBS Award for Collection System of the Year Small – GOLD
 - Groundwater Recharge
 - Recycled Water Distribution
 - Facilities Management & Security
 - Completes 600 support tickets annually
 - New - Anthesis Partnership



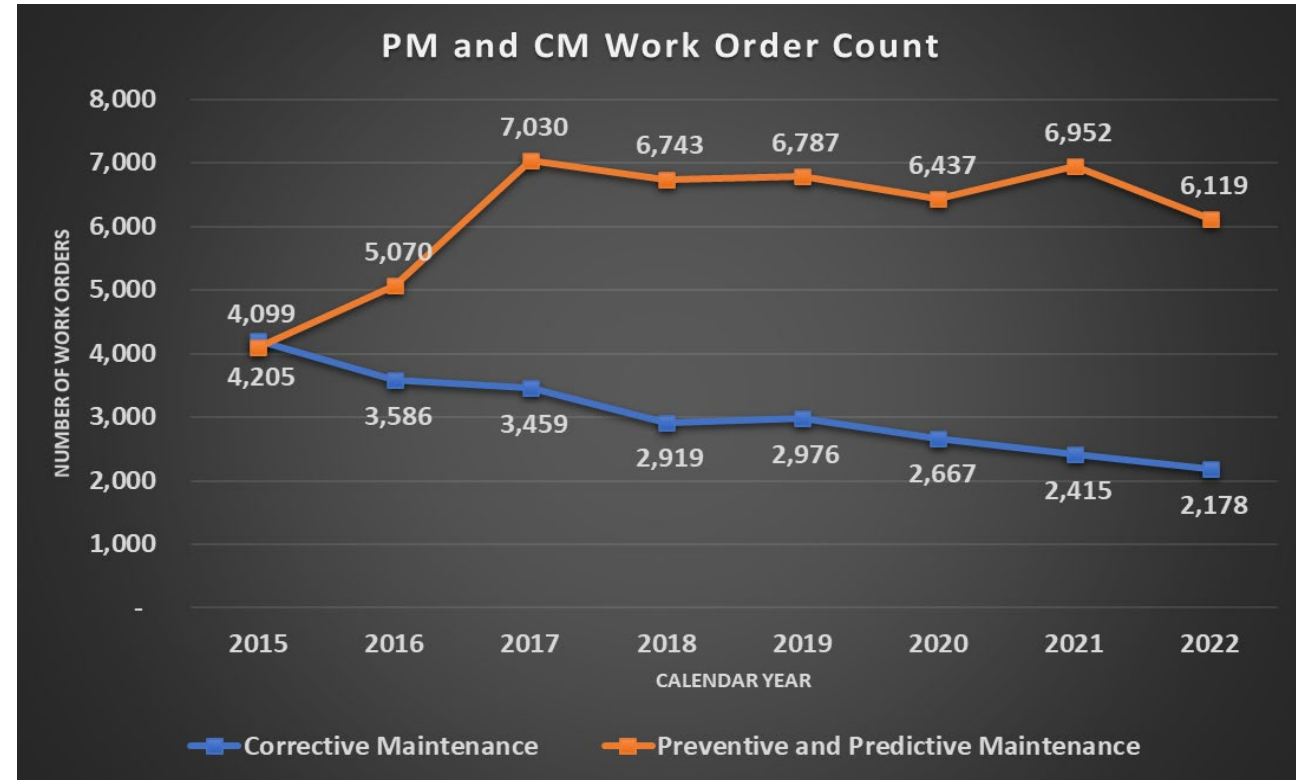
Facilities & Water System Programs Unit

- Anthesis Partnership
 - Started Monday, January 16, 2023
 - Performing day-to-day on-site porter services around our headquarters facilities
 - Operating together with the Facilities Management team to keep our headquarters site hospitable for staff and visitors.



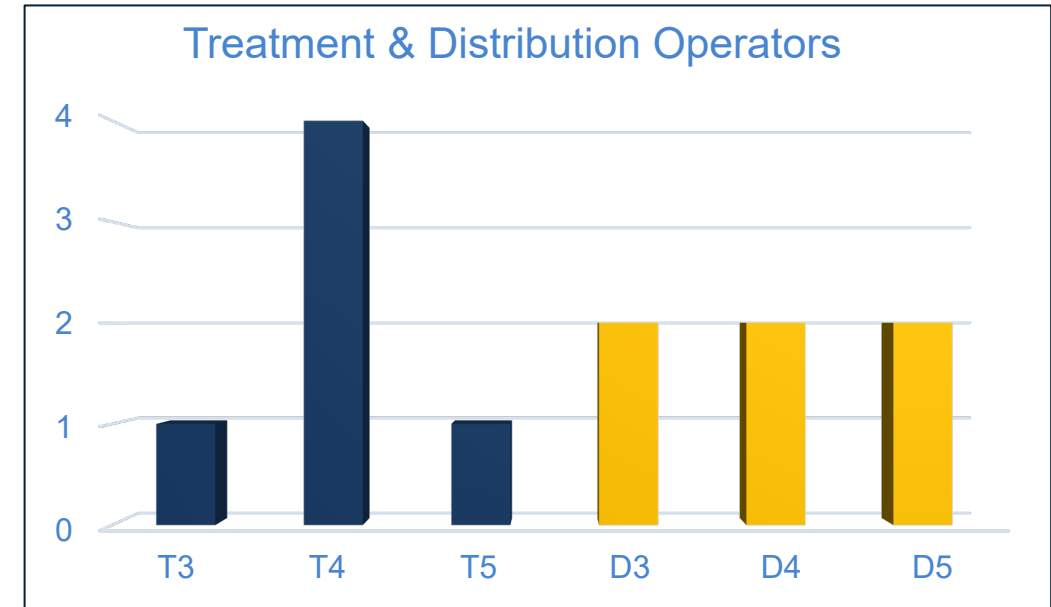
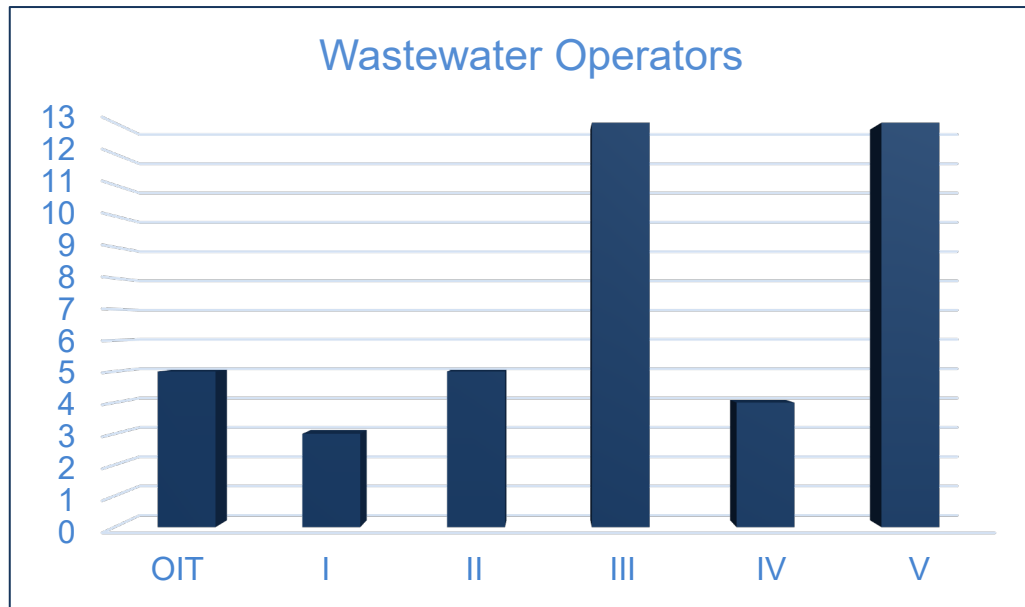
Maintenance Unit

- 41 staff
- Maintains >15,000 assets
- Completes >10,000 work orders/year
- Includes: Planners, Mechanics, Electrical and Instrumentation Technicians



Operations Unit

- 49 certified wastewater and water operators across IEUA
- 51 MGD wastewater into valuable recycled water
- 7 Advanced Water Treatment Operators



Organics Management Unit

- 25 staff
- 200,000 tons/yr processed (biosolids and greenwaste)
- Markets 230,000 cys/yr compost
- All operations, maintenance, sales, warehouse, and administration onsite



RECEIVE AND FILE

3A



Regional Sewerage Program Policy Committee Meeting

AGENDA

**Thursday, May 4, 2023
3:30 p.m.**

**Agency Headquarters – Board Room
6075 Kimball Avenue, Building A
Chino, CA 91708**

Telephone Access: (415) 856-9169/Conf ID: 966 283 115#

The public may participate and provide public comment during the meeting by joining in person or by calling the number provided above. Comments may also be submitted by email to the Recording Secretary Laura Mantilla at lmantilla@ieua.org prior to the completion of the Public Comment section of the meeting. Comments will be distributed to the Policy Members.

Call to Order

Roll Call

Flag Salute

Public Comment

Members of the public may address the Committee on any item that is within the jurisdiction of the Committee; however, no action may be taken on any item not appearing on the agenda unless the action is otherwise authorized by Subdivision (b) of Section 54954.2 of the Government Code. Comments will be limited to three minutes per speaker.

Additions to the Agenda

In accordance with Section 54954.2 of the Government Code (Brown Act), additions to the agenda require two-thirds vote of the legislative body, or, if less than two-thirds of the members are present, a unanimous vote of those members present, that there is a need to take immediate action and that the need for action came to the attention of the local agency subsequent to the agenda being posted.

(Continued)

1. Technical Committee Report (Oral)

2. Action Item

- A. Approval of April 6, 2023 Policy Committee Meeting Minutes
- B. Regional Plant No. 1 Digesters 6 and 7 Rehabilitation and Roof Repairs Construction Contract Award
- C. Regional Plant No. 1 SCADA Migration Project Construction Contract Award

3. Informational Items

- A. Fiscal Year 2023/24 and 2024/25 Biennial Budget Overview of the Regional Wastewater and Recycled Water Programs
- B. Recycled Water Groundwater Recharge Update
- C. Operations & Maintenance Department Quarterly Update

4. Receive and File

- A. Building Activity Report
- B. Recycled Water Distribution – Operations Summary

5. Other Business

- A. IEUA General Manager's Update
- B. Committee Member Requested Agenda Items for Next Meeting
- C. Committee Member Comments
- D. Next Meeting – June 1, 2023

Adjourn

DECLARATION OF POSTING

I, Laura Mantilla, Executive Assistant of the Inland Empire Utilities Agency*, a Municipal Water District, hereby certify that per Government Code Section 54954.2, a copy of this agenda has been posted at the Agency's main office, 6075 Kimball Avenue, Building A, Chino, CA and on the Agency's website at www.ieua.org at least seventy-two (72) hours prior to the meeting date and time above.

In compliance with the Americans with Disabilities Act, if you need special assistance to participate in this meeting, please contact Laura Mantilla at (909) 993-1944 or lmantilla@ieua.org 48 hours prior to the scheduled meeting so that IEUA can make reasonable arrangements to ensure accessibility.

RECEIVE AND FILE

3B

Building Activity Report - YTD Fiscal Year 2022/23



Legend

Service Area

Unincorporated

Residential

<=1.0

1.0 - 10.0

>10.0

Commercial

<=1.0

1.0 - 10.0

>10.0

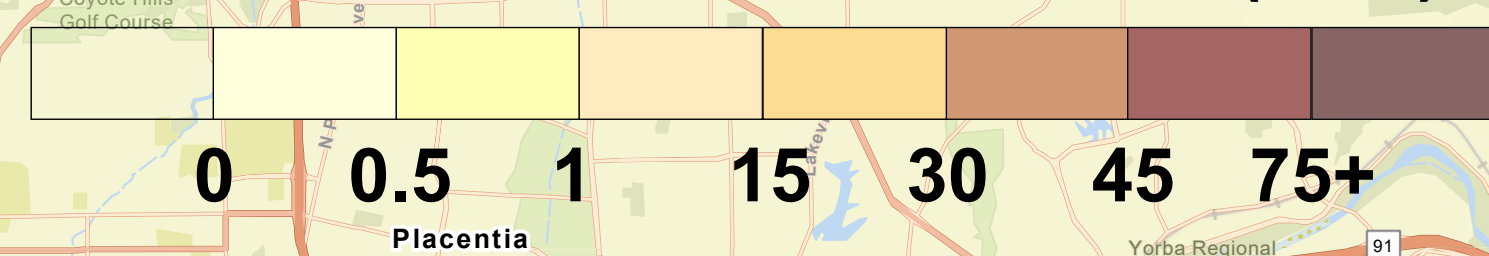
Industrial

<=1.0

1.0 - 10.0

>10.0

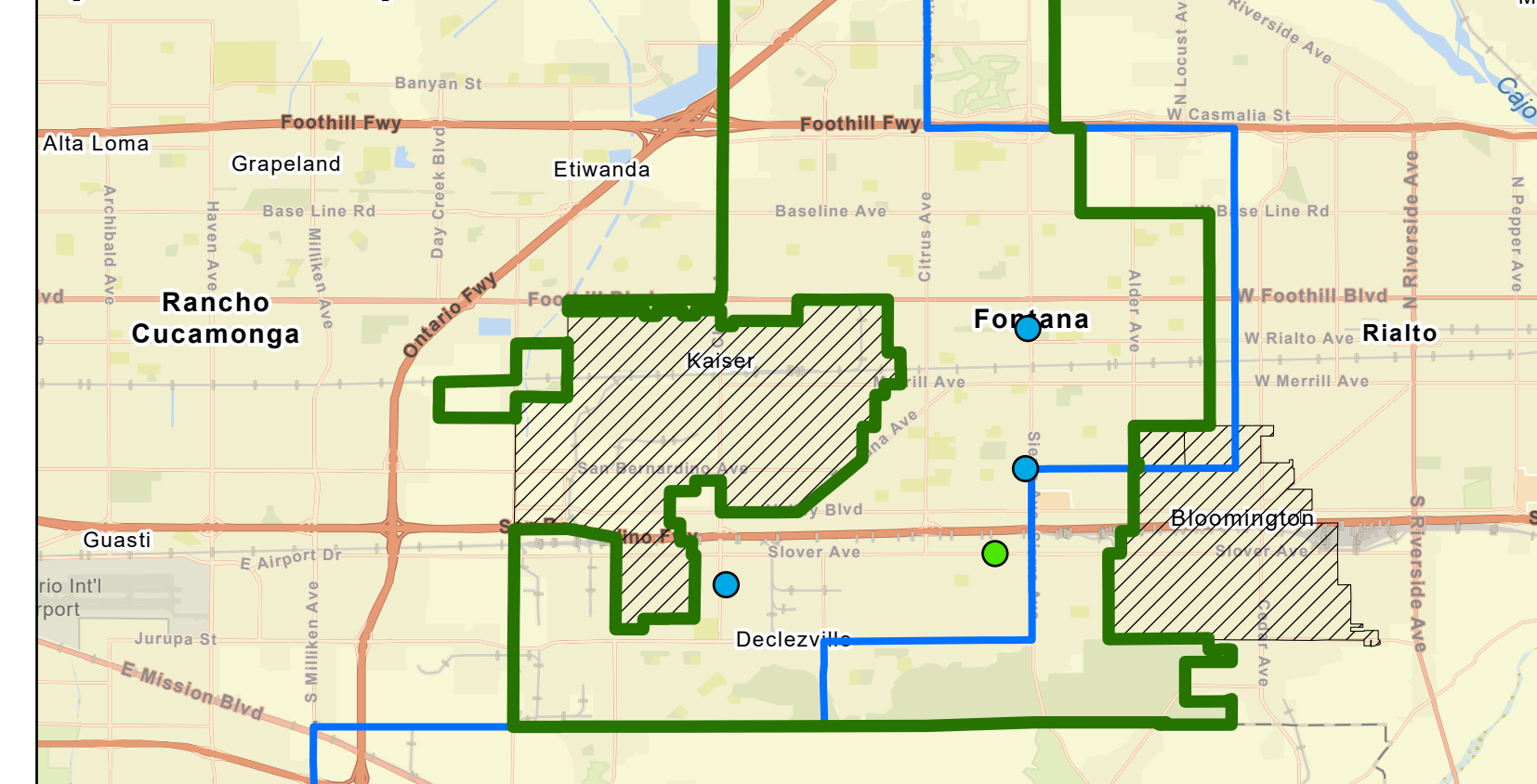
HALF MILE GRID: TOTAL EDU's (YTD)



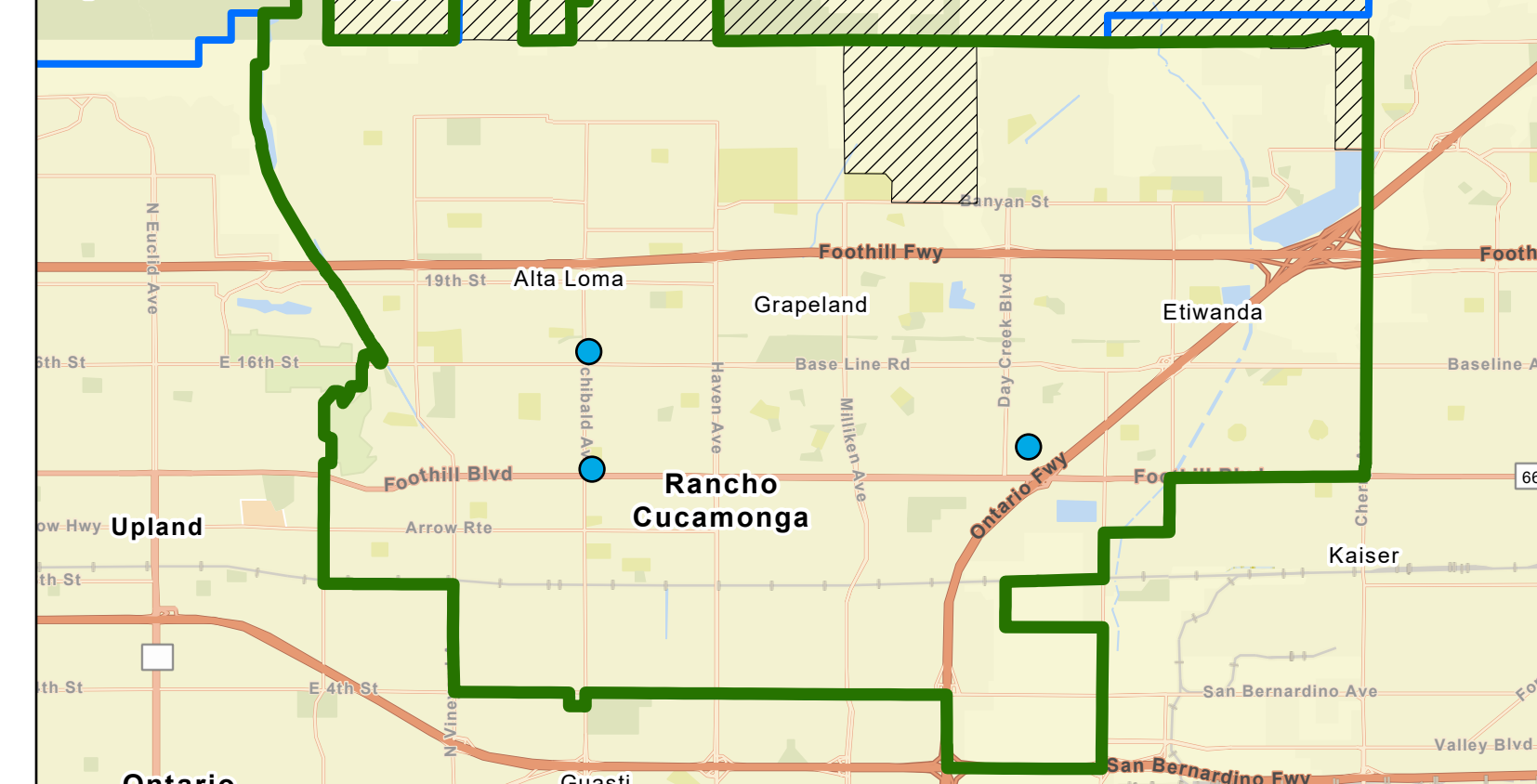
TOTAL EDU BY WASTEWATER CONNECTION TYPE (YTD)

Contracting Agency	YTD Actual				Projected
	Commercial (EDUs)	Industrial (EDUs)	Residential (EDUs)	Total (EDUs)	
Chino	36	0	66	102	434
Chino Hills	13	0	2	15	19
CVWD	25	0	18	43	2050
Fontana	61	2	270	333	962
Montclair	19	2	0	21	474
Ontario	73	152	519	744	3780
Upland	17	0	74	91	340
Total	244	157	949	1350	8059

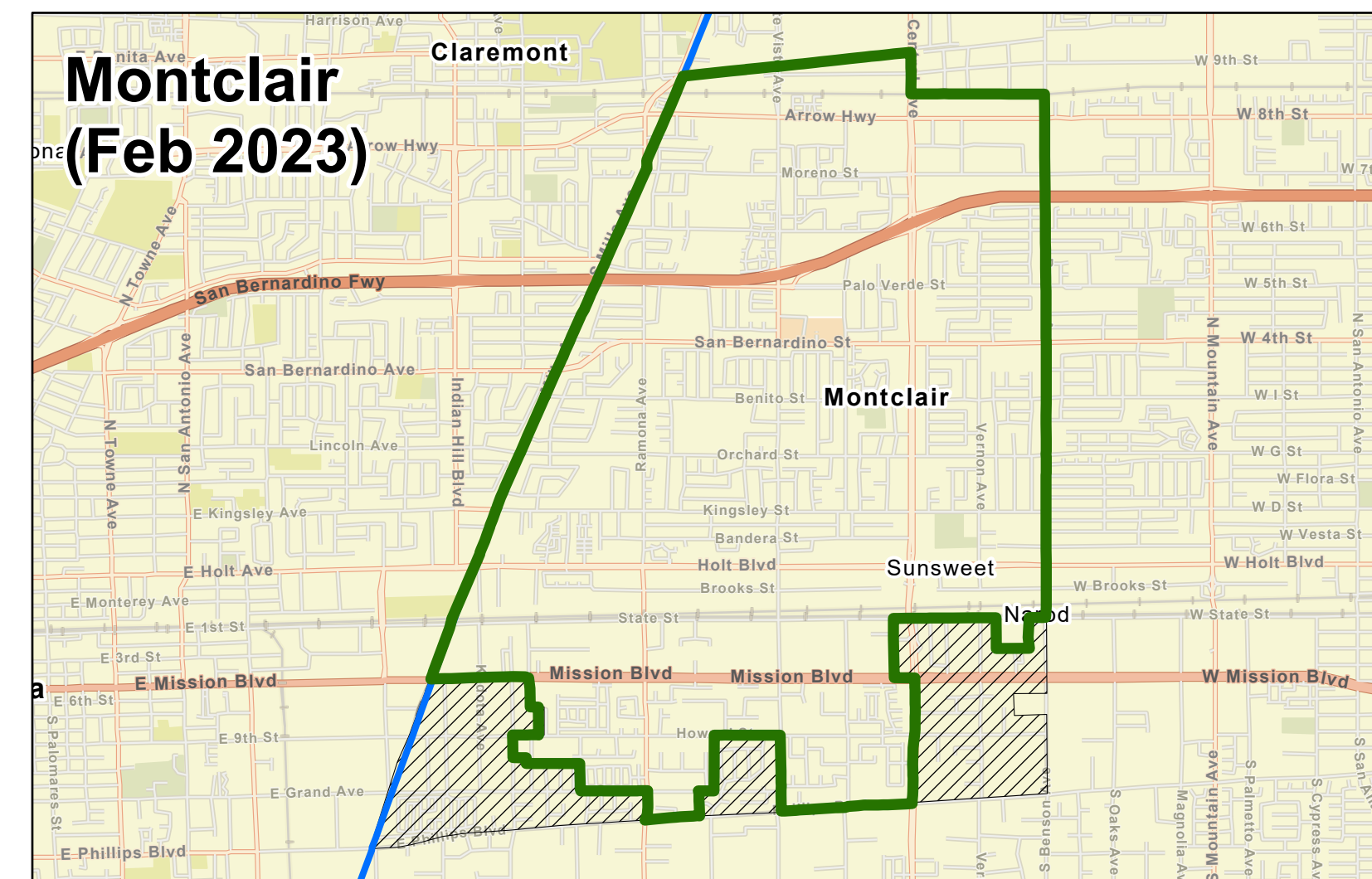
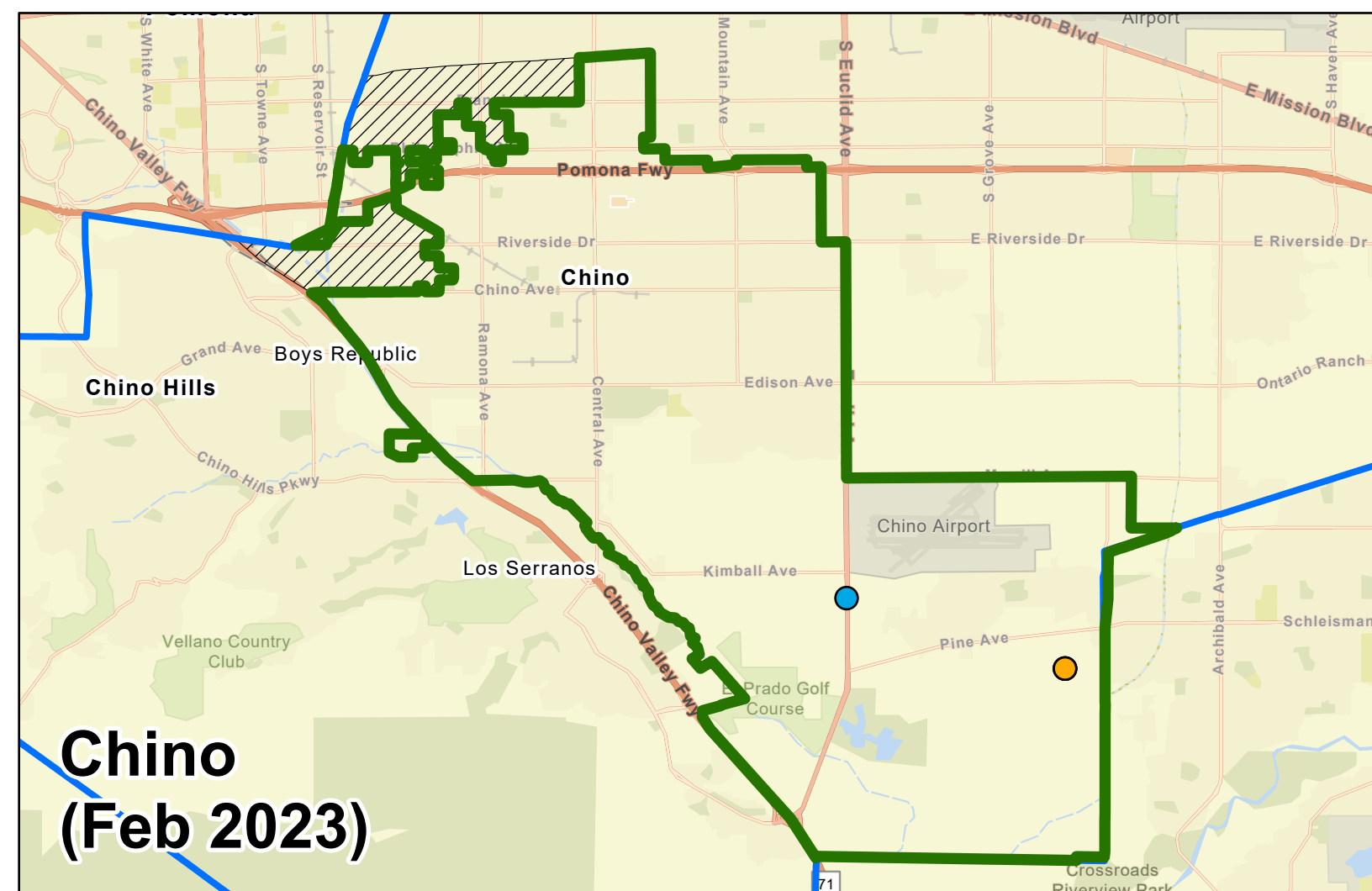
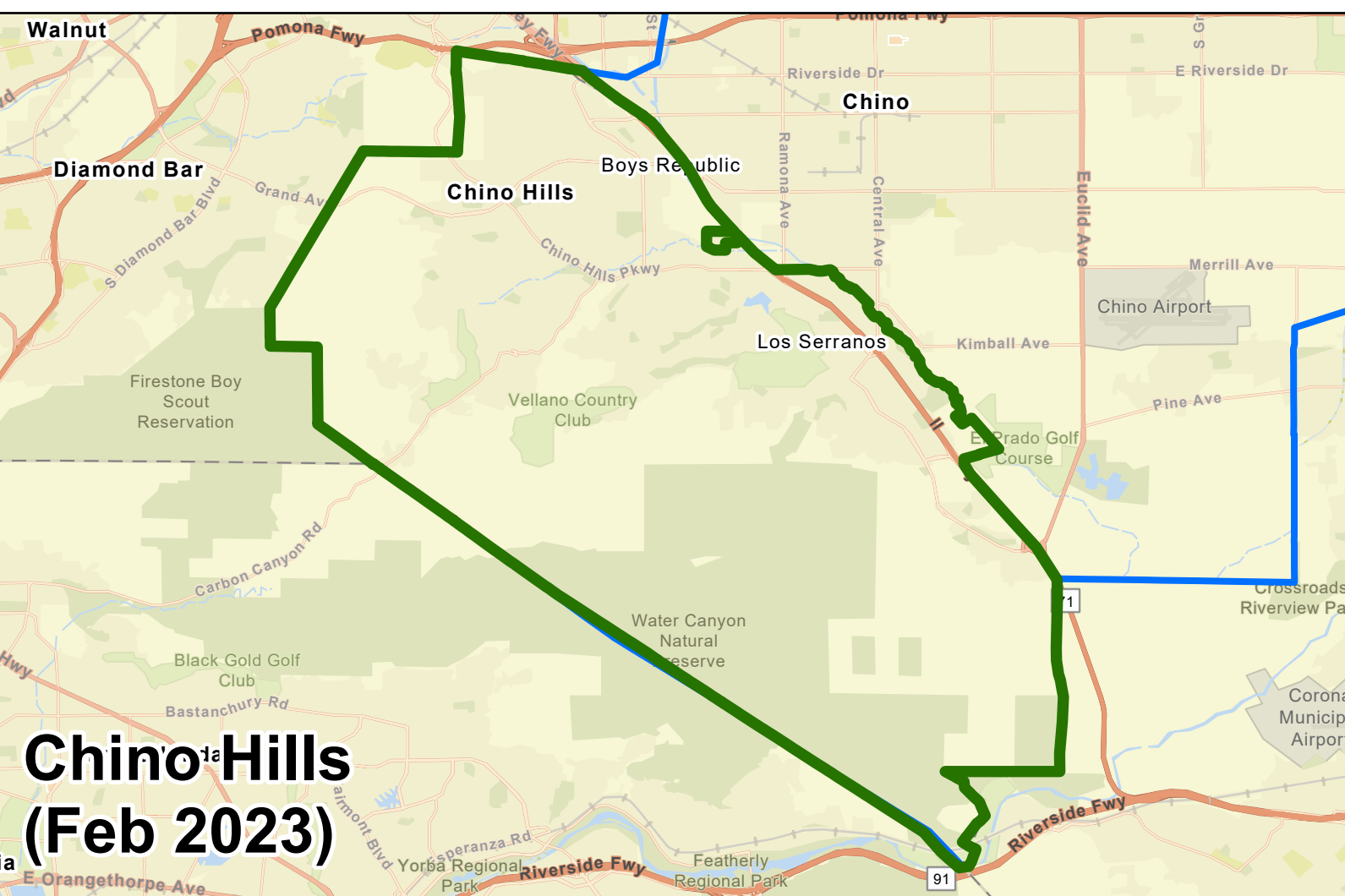
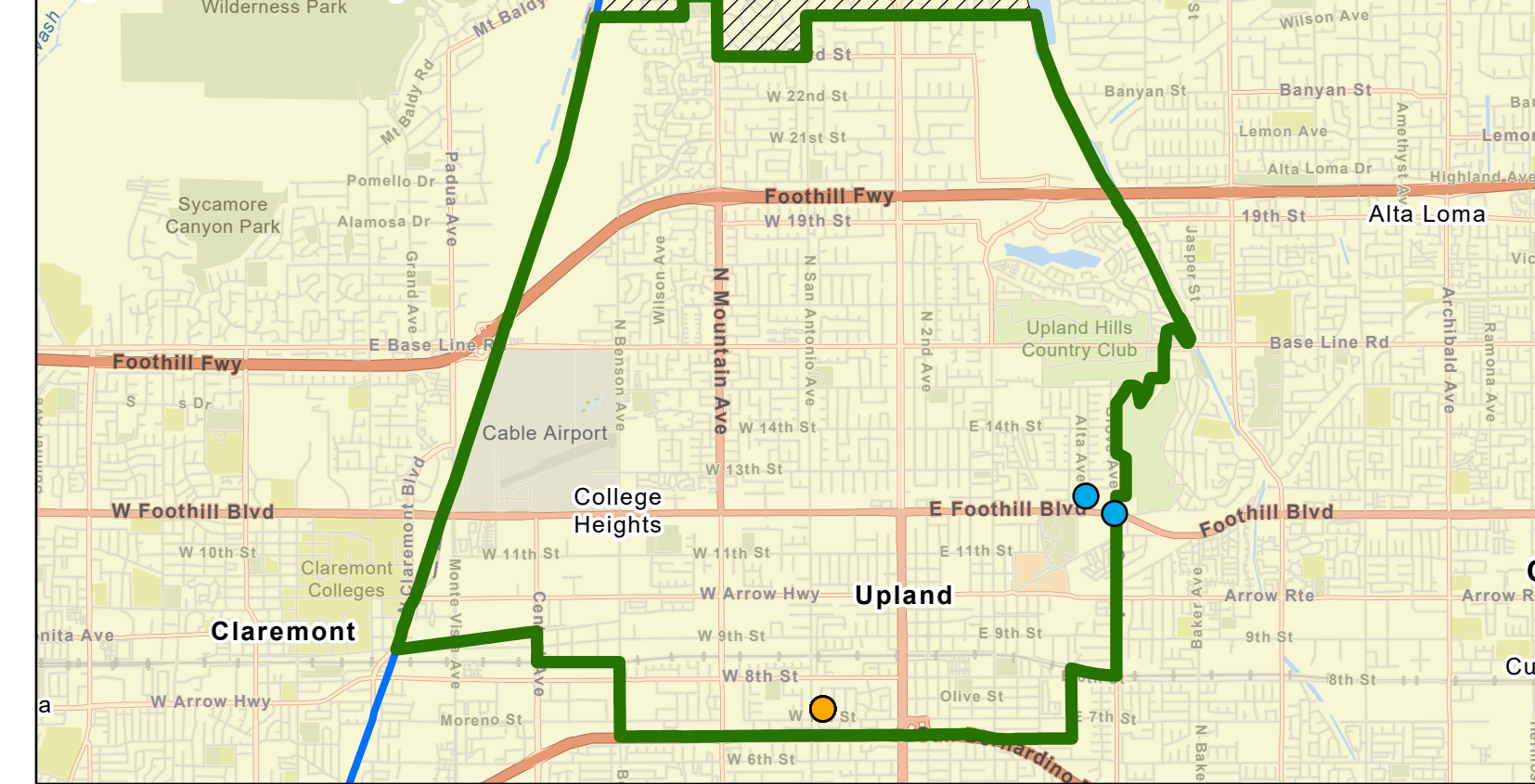
Fontana (Feb 2023)



Cucamonga Valley Water District (Feb 2023)



Upland (Feb 2023)



RECEIVE AND FILE

3C

IEUA RECYCLED WATER DISTRIBUTION – MARCH 2023

TOTAL ALL PLANTS

Influent: 55.9 MGD
 Delivered: 9.9 MGD
 Percent Delivered: 18%

Preliminary Deliveries

RW GWR: 2.8 MGD
 RW Direct Use: 7.1 MGD

RP-4

Delivered: 5.2 MGD

RP-1

Delivered: 0.3 MGD

CCWRF

Delivered: 3.0 MGD

RP-5

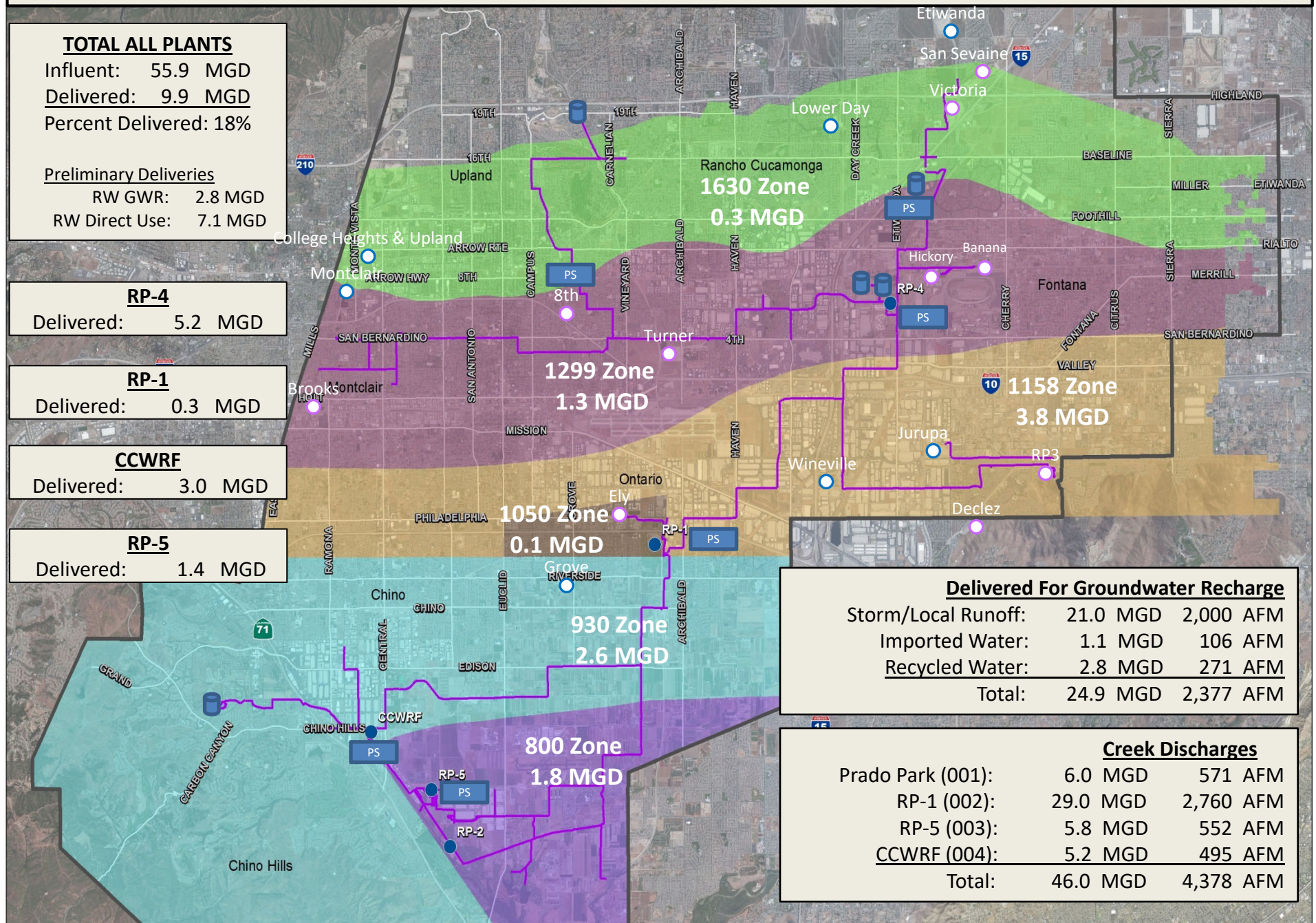
Delivered: 1.4 MGD

Delivered For Groundwater Recharge

Storm/Local Runoff:	21.0 MGD	2,000 AFM
Imported Water:	1.1 MGD	106 AFM
Recycled Water:	2.8 MGD	271 AFM
Total:	24.9 MGD	2,377 AFM

Creek Discharges

Prado Park (001):	6.0 MGD	571 AFM
RP-1 (002):	29.0 MGD	2,760 AFM
RP-5 (003):	5.8 MGD	552 AFM
CCWRF (004):	5.2 MGD	495 AFM
Total:	46.0 MGD	4,378 AFM



Recycled Water Recharge Deliveries - March 2022 (Acre-Feet)

Basin	3/1-3/5	3/6-3/12	3/13-3/19	3/20-3/26	3/27-3/31	Month Actual	FY To Date Actual	Deliveries are draft until reported as final and do not included evaporative losses.	
Ely	16.4	0.0	0.0	0.0	0.0	16.4	513		
Banana	0.0	36.1	24.0	24.9	1.4	86.4	522		
Hickory	8.4	15.4	24.0	24.9	1.4	74.1	788		
Turner 1 & 2	0.0	0.0	0.0	0.0	0.0	0.0	542		
Turner 3 & 4	0.0	0.0	0.0	33.1	3.7	36.8			
8th Street	0.0	72.8	65.3	20.1	0.0	158.2	1812		
Brooks	0.0	0.0	0.0	0.0	0.0	0.0	550		
RP3	22.4	51.1	72.2	50.8	58.7	255.2	3899		
Declez	4.9	24.6	31.3	22.5	0.3	83.6	629		
Victoria	17.2	40.0	55.1	92.5	31.0	235.8	1147		
San Sevaine	36.5	50.4	67.0	94.0	31.1	279.0	2475		
Total	105.8	290.4	338.8	362.8	127.7	1,225.5	12,875	11,470	AF previous FY to day actual

