



Regional Sewerage Program Technical Committee Meeting

AGENDA Thursday, July 28, 2022 2:00 p.m. Teleconference Call

In an effort to prevent the spread of COVID-19, the Regional Sewerage Program Technical Committee Meeting will be held remotely by teleconference.

Teams Conference Link: https://teams.microsoft.com/l/meetup-join/19%3ameeting_NmRmY2FmMDYtNTBmMS00MjA5LTk3ODgtZDkyY2U3MTRmZGYz%40thread.v2/0?context=%7b%22Tid%22%3a%224c0c1e57-30f3-4048-9bd2-cd58917dcf07%22%2c%22Oid%22%3a%22329ec40e-eb94-4218-9621-6bfa0baa9697%22%7d

Teleconference: (415) 856-9169/Conference ID: 715 477 121#

This meeting is being conducted virtually by video and audio conferencing. There will be no public location available to attend the meeting; however, the public may participate and provide public comment during the meeting by calling the number provided above. Comments may also be submitted by email to the Recording Secretary Laura Mantilla at lmantilla@ieua.org prior to the completion of the Public Comment section of the meeting. Comments will be distributed to the Committee Members.

Call to Order

Roll Call

Public Comment

Members of the public may address the Committee on any item that is within the jurisdiction of the Committee; however, no action may be taken on any item not appearing on the agenda unless the action is otherwise authorized by Subdivision (b) of Section 54954.2 of the Government Code. Comments will be limited to three minutes per speaker.

(Continued)

Additions to the Agenda

In accordance with Section 54954.2 of the Government Code (Brown Act), additions to the agenda require two-thirds vote of the legislative body, or, if less than two-thirds of the members are present, a unanimous vote of those members present, that there is a need to take immediate action and that the need for action came to the attention of the local agency subsequent to the agenda being posted.

1. Action Items

- A. Approval of June 30, 2022 Technical Committee Meeting Minutes
- B. Request by the City of Fontana for a Regional Sewage Connection – Mulberry (F-34)

2. Informational Items

- A. Operations and Maintenance Department Quarterly Update
- B. Return to Sewer Study (*Oral*)
- C. Operations & Compliance Updates (*Oral*)

3. Receive and File

- A. Building Activity Report
- B. Recycled Water Distribution - Operations Summary

4. Other Business

- A. Committee Member Requested Agenda Items for Next Meeting
- B. Committee Member Comments
- C. Next Regular Meeting – August 25, 2022

Adjourn

In compliance with the Americans with Disabilities Act, if you need special assistance to participate in this meeting, please contact the Recording Secretary (909) 993-1926, 48 hours prior to the scheduled meeting so that the Agency can make reasonable arrangements.

DECLARATION OF POSTING

I, Laura Mantilla, Executive Assistant of the Inland Empire Utilities Agency*, a Municipal Water District, hereby certify that, per Government Code Section 54954.2, a copy of this agenda has been posted at the Agency's main office, 6075 Kimball Avenue, Building A, Chino, CA and on the Agency's website at www.ieua.org at least seventy-two (72) hours prior to the meeting date and time above.

In compliance with the Americans with Disabilities Act, if you need special assistance to participate in this meeting, please contact Laura Mantilla at (909) 993-1944 or lmantilla@ieua.org 48 hours prior to the scheduled meeting so that IEUA can make reasonable arrangements to ensure accessibility.

**ACTION
ITEM**

1A



Regional Sewerage Program Technical Committee Meeting MINUTES OF JUNE 30, 2022

CALL TO ORDER

A regular meeting of the IEUA/Regional Sewerage Program – Technical Committee was held via teleconference on Thursday, June 30, 2022. Committee Chair Nicole deMoet/City of Upland called the meeting to order at 2:02 p.m. Recording Secretary Sally Lee took roll call and established a quorum was present.

ATTENDANCE via Teleconference

COMMITTEE MEMBERS PRESENT:

Dave Crosley	City of Chino
Ron Craig	City of Chino Hills
Amanda Coker	Cucamonga Valley Water District (CVWD)
Armando Martinez	City of Fontana
Monica Heredia	City of Montclair
Chris Quach	City of Ontario
Nicole deMoet	City of Upland
Christiana Daisy	Inland Empire Utilities Agency (IEUA)

OTHERS PRESENT:

Mark Wiley	City of Chino Hills
Alexis Mascarinas	City of Ontario
Braden Yu	City of Upland
Natalie Avila	CVWD
Eduardo Espinoza	CVWD
Gull Nawaz	CVWD
Randall Reed	CVWD
Jiwon Seung	CVWD
Justin Scott-Coe	Monte Vista Water District
Dave Michael	Unknown
Phil West	Unknown
Jake Comer	West & Associates
Jerry Burke	IEUA
Pietro Cambiaso	IEUA

OTHERS PRESENT (continued):

Andy Campbell	IEUA
Javier Chagoyen-Lazaro	IEUA
Kristine Day	IEUA
Christiana Daisy	IEUA
Don Hamlett	IEUA
Sally Lee	IEUA
Scott Lening	IEUA
Eddie Lin	IEUA
Alex Lopez	IEUA
Bonnie Marseilles	IEUA
Jason Marseilles	IEUA
William McDonnell	IEUA
Liza Muñoz	IEUA
Cathleen Pieroni	IEUA
Steven Smith	IEUA
Jeff Ziegenbein	IERCA

PUBLIC COMMENTS

There were no public comments.

ADDITIONS/CHANGES TO THE AGENDA

There were no additions/changes to the agenda.

1. ACTION ITEMS**A. APPROVAL OF MAY 26, 2022 TECHNICAL COMMITTEE MEETING MINUTES**

Motion: By Amanda Coker/CVWD and seconded by Dave Crosley/City of Chino to approve the meeting minutes of the May 26, 2022, Regional Technical Committee meeting by the following vote:

Ayes: Coker, Crosley, Craig, Daisy, Martinez, Quach, deMoet

Noes: None

Absent: Heredia

Abstain: None

The motion passed by a vote of 7 ayes, 0 noes, 0 abstain, and 1 absent.

B. REQUEST BY THE CITY OF CHINO FOR A REGIONAL CONNECTION POINT TO THE WESTERN INTERCEPTOR RELIEF SEWER (CHINO REGIONAL SEWER CONNECTION C-03D) PROJECT NUMBER EN0000000145

Jason Marseilles/IEUA provided an overview of the City of Chino's request for a regional connection point to the Western Interceptor Relief Sewer. Committee Member Craig/City of Chino Hills expressed his appreciation to IEUA staff for the thorough report. Mr. Marseilles acknowledged the City of Chino staff for their coordination in the process.

Motion: By Christopher Quach/City of Ontario and seconded by Amanda Coker/CVWD to recommend that the Regional Technical Committee approve the request by the city of Chino for one new connection point to the Western Interceptor Relief Sewer (Chino Regional Connection C-03D) by the following vote:

Ayes: Quach, Coker, Crosley, Craig, Daisy, Martinez, deMoet

Noes: None

Absent: Heredia

Abstain: None

The motion passed by a vote of 7 ayes, 0 noes, 0 abstain, and 1 absent.

2. INFORMATIONAL ITEMS

A. RECYCLED WATER GROUNDWATER RECHARGE UPDATE

Steven Smith/IEUA gave an update on recycled water groundwater recharge. Committee Member Coker/CVWD expressed appreciation to IEUA staff for optimizing the recharge of recycled water. She asked if 17,000 AF of recycled water is the maximum limit or if there is a possibility of increasing that capacity. Mr. Smith stated that 17,000 AF is very close to the maximum capacity.

B. RETURN TO SEWER STUDY UPDATES

Eddie Lin/IEUA stated that the California Data Collaborative (CaDC) completed its analysis of the commercial and industrial categories. They are currently comparing the return to sewer model and City of Ontario's sewer master plan flows. Upon completion of the analysis of the City of Ontario's data, CaDC will reach out to set another Technical Subgroup meeting. Committee Member Quach asked if CaDC is working on the requested scope on Ontario Ranch residential data. Mr. Lin stated that CaDC is working on that request.

C. OPERATIONS & COMPLIANCE UPDATES

Mr. Lin reported that there was a mild toxicity failure at RP-5 in June. He stated that the outfall gate is currently closed, and accelerated testing will commence when the gate is reopened in the fall. He stated that on May 26, a high pH event occurred at the Carbon Canyon facility caused by ammonia laden wastewater slug, which caused the facility to increase hydrochloride usage, create a diversion of flow to other plants, and use emergency storage basins. An investigation was conducted on May 27 and identified an ice manufacturer tributary that had a leak in their refrigerator process. IEUA and City of Chino staff are working on enforcement action, which will include cost recovery for managing the system slug and requirements to implement safeguard measures.

3. RECEIVE AND FILE

A. DRAFT REGIONAL SEWERAGE PROGRAM POLICY COMMITTEE MEETING AGENDA

B. BUILDING ACTIVITY REPORT

C. RECYCLED WATER DISTRIBUTION – OPERATIONS SUMMARY

Items 3A through 3C were received and filed by the Committee.

Committee Member Monica Heredia joined the meeting at 2:24 p.m.

4. TECHNICAL COMMITTEE ITEMS DISTRIBUTED**A. NOTICE OF AVAILABILITY OF RECYCLED WATER AS GROUNDWATER RECHARGE (FY 21-22)****5. OTHER BUSINESS****A. COMMITTEE MEMBER REQUESTED AGENDA ITEMS FOR NEXT MEETING**

There were no requested agenda items.

B. COMMITTEE MEMBER COMMENTS

Committee Member Coker introduced CVWD staff members Gull Nawaz, Associate Engineer and Jiwon Seung, Assistant Engineer and noted that they will be joining the Technical Committee meetings in the future.

Christiana Daisy/IEUA stated that Laura Mantilla will begin serving as the recording secretary at the next Technical Committee meeting.

Committee Member Craig expressed his appreciation for Chair deMoet's leadership as Chair for the past two years.

C. NEXT MEETING – JULY 28, 2022

ADJOURNMENT – Chair deMoet adjourned the meeting at 2:30 p.m.

Prepared by:

Sally Lee, Recording Secretary

**ACTION
ITEM**

1B

Date: July 28, 2022

To: Regional Technical Committee

From: Inland Empire Utilities Agency

Subject: Request by the City of Fontana for a Regional Connection Point to the Fontana Interceptor Relief Sewer (Fontana Regional Sewer Connection # F-34 Project EN0000000143)

RECOMMENDATION

It is recommended that the Regional Technical Committee approve the request by the City of Fontana for one new connection point to the Fontana Interceptor Sewer (Regional Sewer Connection # F-34).

BACKGROUND

On June 7, 2022, Inland Empire Utilities Agency (IEUA) received an amended request from the City of Fontana (Attachment "A") for the approval of a new Regional Connection to the Fontana Interceptor Relief Sewer at Station 104+55.74 through a new manhole on the north side of this tributary area to the existing 54-inch sewer.

The connection point is required to serve a 225,014 S.F. industrial warehouse. The project is located west of Calabash Avenue, east of Mulberry Avenue, north of Jurupa Avenue and south of Santa Ana Avenue. The development encompasses approximately 9.91 acres. An overall vicinity map is provided (Attachment "B").

Average Dry and Peak Dry Weather Flows were provided by the City of Fontana. The IEUA peak dry and wet weather flow was obtained using IEUA's peaking factors, since they are more conservative:

SUMMARY OF FLOW RATES UTILIZED

Fontana Regional Connection F-34: Average Dry Weather Flow (ADWF) Rate = 0.00028 MGD
Peak Dry Weather Flow (PDWF) Rate = 0.00101 MGD
Peak Wet Weather Flow (PWWF) Rate = 0.00145 MGD

The hydraulic model was used to evaluate the Fontana Interceptor Relief Sewer to the Cucamonga Trunk, then to Regional Water Recycled Plant No. 1 (RP-1) as shown in Attachment "B. The hydraulic analysis shows that the connections will not create a capacity deficiency within the noted collection system at buildout under PWWF. The Fontana Interceptor Relief has a depth to Diameter ratio (d/D) of 0.11 and flowrate of 1.58 MGD. The full capacity of this 54-inch sewer line is 64 MGD. This leaves an available capacity of 62.65 MGD. The downstream Cucamonga Trunk Sewer has a depth to Diameter ratio (d/D) of 0.32 and will not be impacted by this tributary flow. Capacity to RP-1 is sufficient to meet the flows added by this development.

ATTACHMENT A

May 3, 2022, City of Fontana Regional Interceptor Request
Final Information Received on June 7, 2022



City Council

Acquanetta Warren
Mayor

Phillip W. Cothran
Mayor Pro Tem

John B. Roberts
Council Member

Jesus "Jesse" Sandoval
Council Member

Peter A. Garcia
Council Member

May 3, 2022

Matthew Poeske, Office Engineer
Inland Empire Utility Agency
6075 Kimball Ave
Chino, CA 91708

**Subject: City of Fontana Regional Connection Request
Mulberry Warehouse
Mulberry Avenue and & Jurupa Avenue**

Dear Mr. Poeske,

On behalf of the applicant, Panattoni Development Company, Inc, this letter is a request to connect to a sewer main maintained and serviced by IEUA, located in the City of Fontana along Jurupa Avenue between a Mulberry Avenue and Calabash Avenue (see attached vicinity map). There is currently no available Fontana maintained sewer that can feasibly be reached by this site.

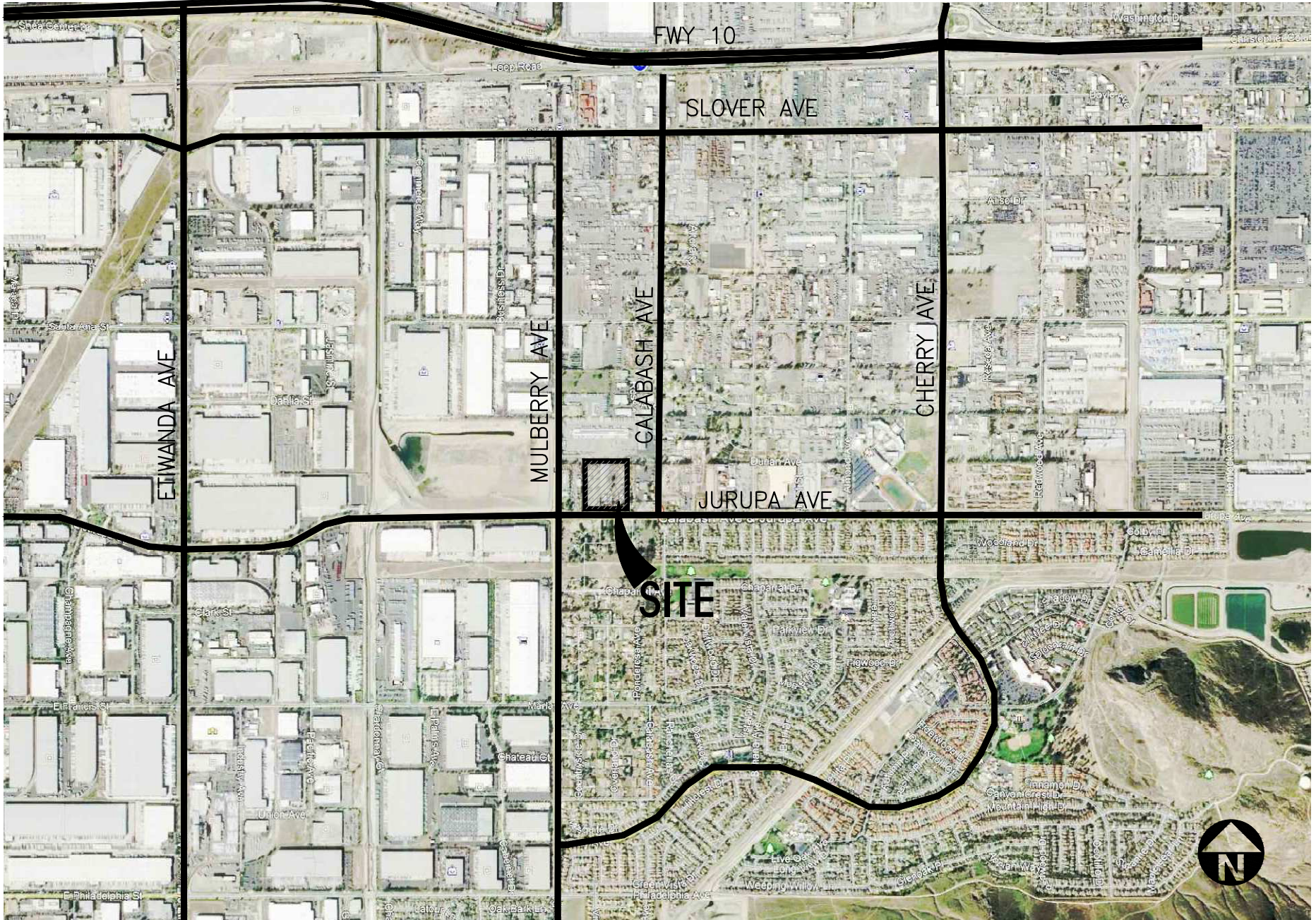
Panattoni Development Company, Inc is proposing a 225,014 sf industrial warehouse, including a 4,000 sf office on a 9.91 acre site. A sewer analysis was prepared and has been provided for your use. The analysis determined the site would generate a peak flow of 0.000693 MGD. The site is proposing to channel the flows using an 8" lateral connecting to a new 48" manhole at station 104+55.74 of an existing 54" main in Jurupa Avenue. There are no other a facilities existing or proposed available to connect to.

If you have any questions or need additional information, please do not hesitate to contact this office.

Keith Tolliver
Associate Engineer

VICINITY MAP

NTS





Wallace P. Johnson Plumbing & Heating Inc.
1227 Tustin Ave. | Anaheim, CA 92807
TEL 714-630-7700 License # 262469 C36



JOB SITE: Mulberry

13770 Jurupa Avenue Fontana, CA 92337

BUILDING AREA (ft ²)	SQFT	Persons per 200 SQ ft	Persons per 5000 SQ ft	Total
OFFICE 1ST FLOOR	4000	20		
OFFICE 2ND FLOOR	0			
WAREHOUSE	225014		45	
				65

Project Description & Location:

The proposed project ("Mulberry" project) consists of an approximately 229,014 square foot speculative industrial warehouse building on seven (7) contiguous parcels totaling approximately 9.91 net acres located on the north side of Jurupa Avenue between Mulberry Avenue to the west and Calabash Avenue to the east. The Mulberry project site area consists of the following APNs: 0236-151-17, -18, -20, -35, -36, -54, and -55. The proposed 229,014 SF building will consist of approximately 225,014 SF of warehouse area and approximately 4,000 SF of speculative office area. Within the office area, the anticipated generators of sewer discharge will consist of (1) men's & women's bathrooms, (2) an employee kitchen/break area, and (3) a janitor's closet. Enclosed below is a summary of the anticipated sewer demand/peak flow for the Mulberry project, and the associated calculation methods thereto. The Mulberry project intends to tie into the existing IEUA-controlled 54" sewer main south of the Jurupa Avenue centerline.

Employees Office	20						
Employees Warehouse	45						
Fixtures	Persons	Person use	Uses Per Day	Duration	GPF/GPM	GPD	MGD
Water Closets Male	33	1	33	1	1.28	42.24	0.00004224
Water Closets Female	33	3	99	1	1.28	126.72	0.00012672
Lavatories	65	3	195	0.25	0.5	24.375	2.4375E-05
Urinals	33	2	66	1	0.125	8.25	0.00000825
Bar Sinks	65	2	130	0.5	0.5	32.5	0.0000325
Drinking Fountains	33	1	33	0.5	0.5	8.25	0.00000825
Mop Sinks	1	1	1	10	3.5	35	0.000035
Total MGPD							0.00027734
Total GPD						277.335	
Total GPD Peak Flow W/ 2.5 Peaking Factor						693.3375	
Total MGPD Peak Flow W/ 2.5 Peaking Factor							0.00069334

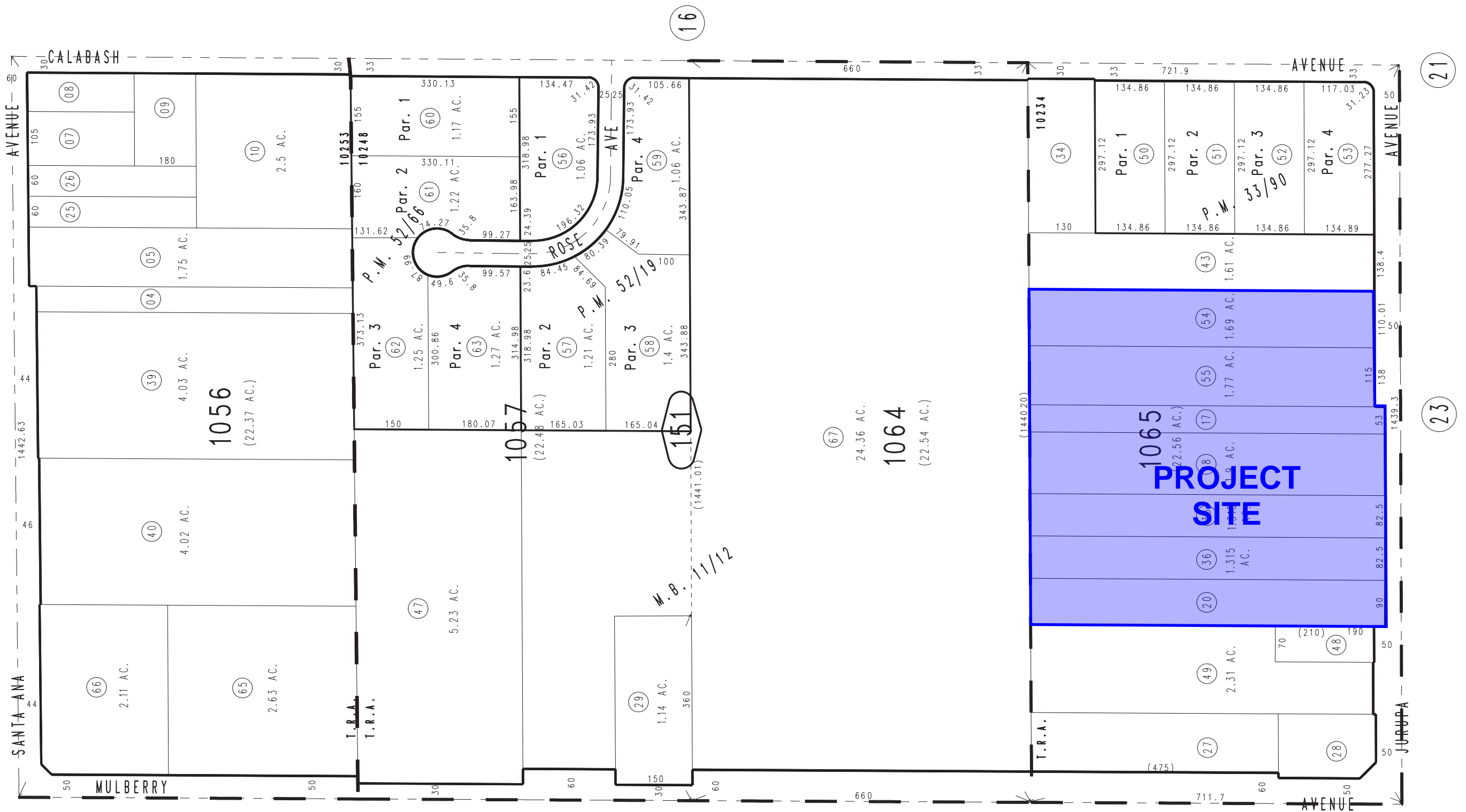
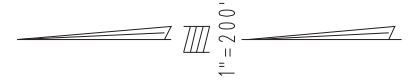
THIS MAP IS FOR THE PURPOSE
OF AD VALOREM TAXATION ONLY.



Semi-Tropic Land & Water Co. M.B. 11/12

City of Fontana
Tax Rate Area
10234 10248 10253

0236-15



February 2004

Parcel Map No. 4459, P.M. 52/66
Parcel Map No. 5313, P.M. 52/19
Parcel Map No. 3468, P.M. 33/90

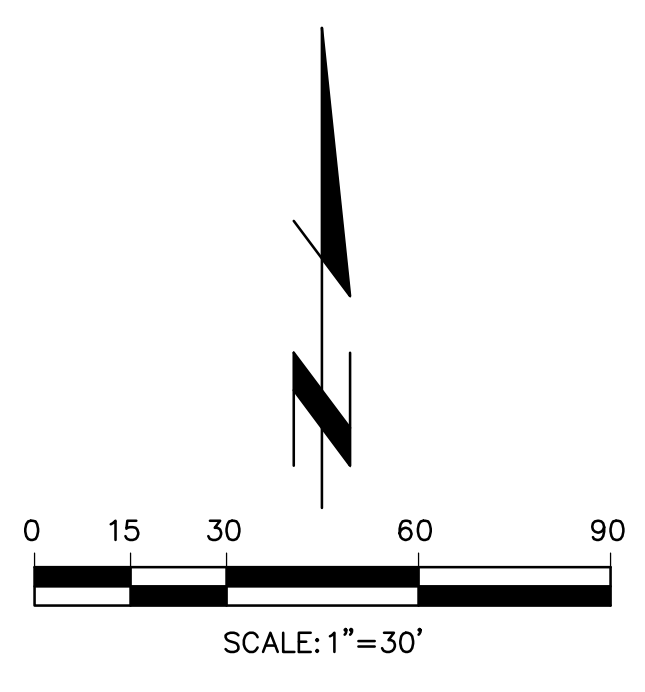
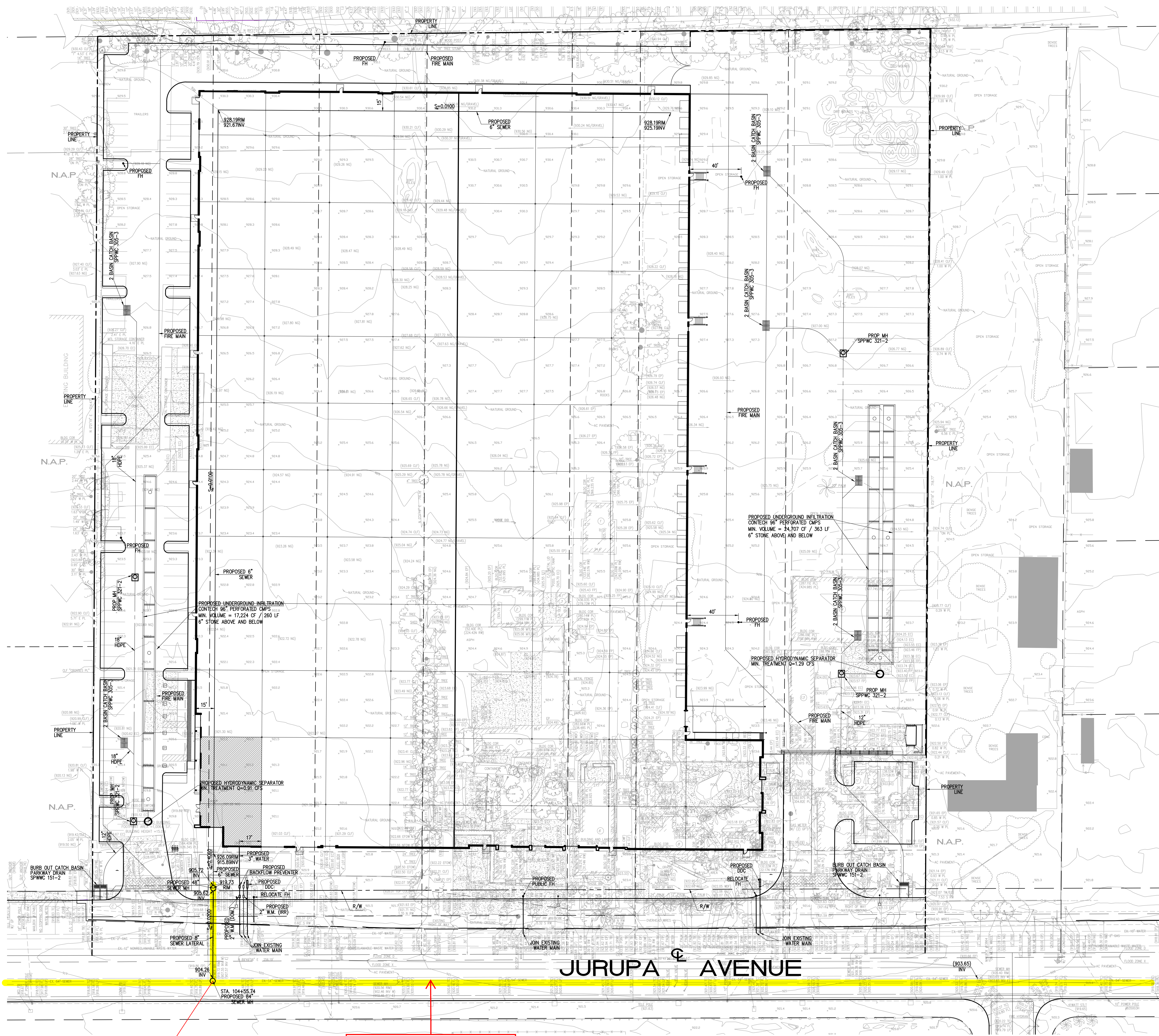
Ptn. S.W.1/4, Sec. 27
T.1S., R.6W.

Assessor's Map
Book 0236 Page 15
San Bernardino County

REVISED
01/05/16 RM-MC
10/26/20 RU

Engineering Browser





PREPARED BY:
Thienes Engineering, Inc.
CIVIL ENGINEERING - LAND SURVEYING
4349 FORESTONE BOULEVARD
LA MIRADA, CALIFORNIA 90638
PH: (714) 521-4311 FAX: (714) 521-4173

CITY OF FONTANA
PUBLIC WORKS DEPARTMENT
CONCEPTUAL UTILITY PLAN
INDUSTRIAL BUILDING
MULBERRY PROJECT
BETWEEN MULBERRY AVE AND CALABASH AVE
FONTANA, CA

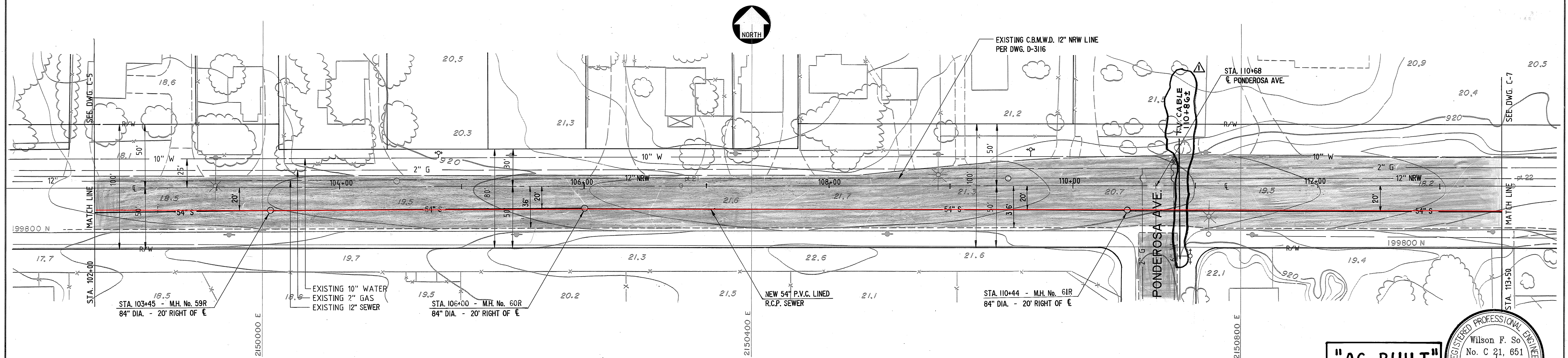
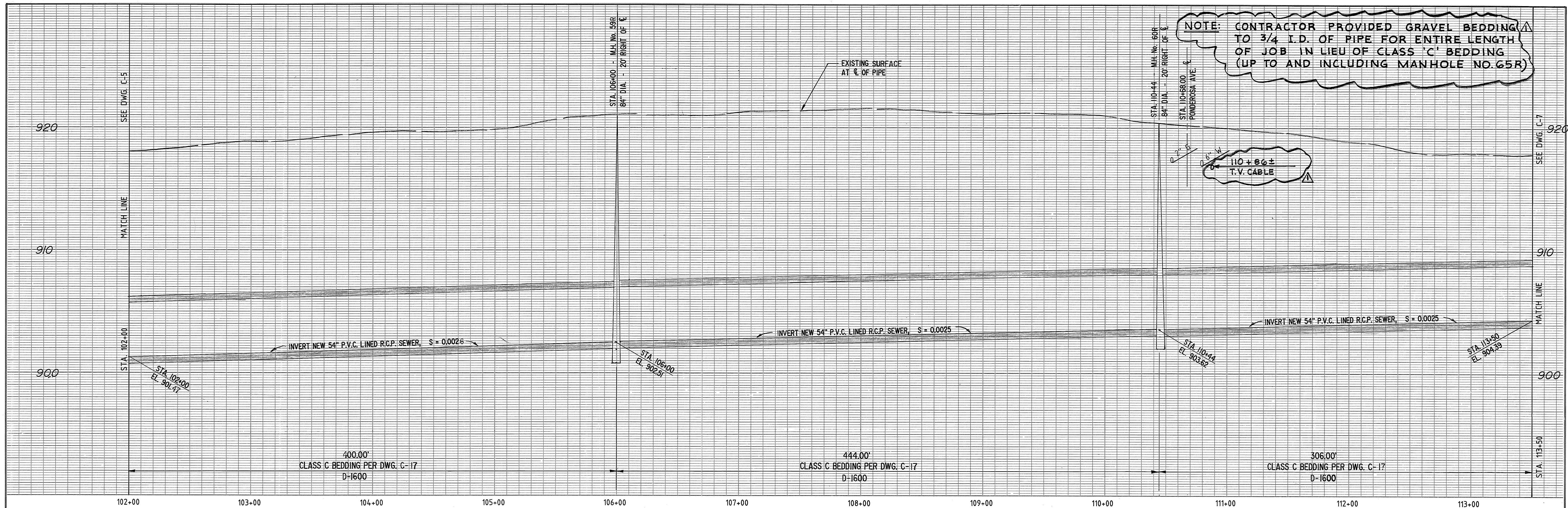
OWNER/APPLICANT:
MULBERRY AND JURUPA IND, LLC
2442 DUPONT DRIVE
IRVINE, CA. 92612
(949) 296-2989

Designed by _____	Approved by _____	Date _____
Checked by _____		
Designed by _____	Public Works Director _____	R.C.E. XXXXX
Date _____		
Checked by _____		
Date _____		
Sheet 2 of 3		Sheets

CONNECTION POINT
STA 104+55.74
PROP 48" MH

EXIST 54" SEW
FONTANA INTERCEPTOR RELIEF SEWER PH II
DWG NO C-4

3942/2 OF 3 SHEET



<p>AS-BUILT DRAWING</p> <p>REVISIONS (PER BUTLER ENGINEERING, INC. 6/24/90): UTILITY LOCATIONS, BEDDING CHANGED</p> <p>REV. REVISION DESCRIPTION BY DATE</p>	<p>T.W. 1/14/91</p> <p>T.W. 1/14/91</p>	<p>DESIGNED BY: M.P.P.</p> <p>DRAWN BY: M.P.B.</p> <p>CHECKED BY: W.F.SO</p>	<p>PROJECT ENGINEER</p> <p>MICHAEL PODEGRACZ R.C.E. No. 33445 6-15-89</p> <p>SUBMITTED BY: Wilson F. So R.C.E. No. 21651 6-15-89</p>	<p>WILSON F. SO & ASSOCIATES, INC.</p> <p>16018 TUSCULA RD., SUITE 1, P.O. BOX 368</p> <p>APPLE VALLEY, CALIF. 92307</p> <p>(619) 242-2365</p>	<p>APPROVED BY: M.P.P.</p> <p>C.B.M.W.D. - PROJECT MANAGER 6/16/89</p>	<p>SCALE:</p> <p>HORIZ.: 1"=40'</p> <p>VERT.: 1"=4'</p> <p>WORK ORDER NO. 1510-570RR</p>	<p>CHINO BASIN MUNICIPAL WATER DISTRICT</p> <p>FONTANA INTERCEPTOR RELIEF SEWER PHASE II</p> <p>JURUPA AVENUE - STA. 102+00 TO STA. 113+50</p> <p>SHEET 7 OF 18</p> <p>DRAWING NO. C-6</p>
--	---	--	--	--	--	--	--

ATTACHMENT B
General Location for Connection F-34

Max Flow based on use

ADWF=.0.00028 MGD

System Peaking for IEUA's Hydraulic Modeling
IEUA Peaking Factor

PWWF=0.00101 MGD

PWWF=0.00145 MGD



**INFORMATION
ITEM**

2A

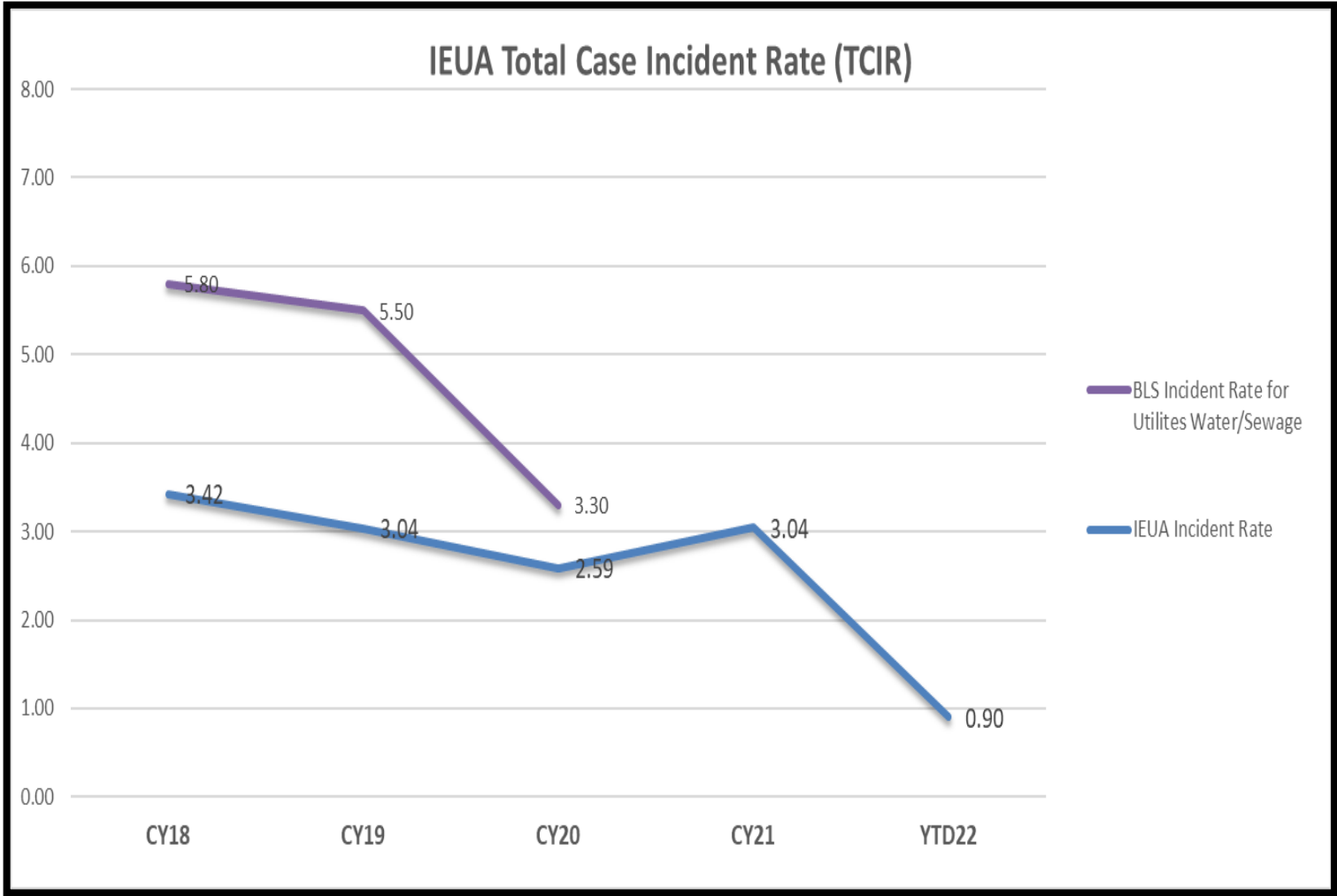
Operations & Maintenance Department Quarterly Update

Lucia Fuertez Diaz

Manager of Facilities & Water System Programs

July 2022

Safety Statistics



A recordable injury is an injury that resulted in more than first aid treatment.

* hours worked does not include June hours rate will be lower

Stretch Exercise Pilot Program

- Regional Plant No. 4
 - Sewer Collections, Operations & Maintenance staff
- Team Feedback
 - Enjoying the morning stretch
 - Feel better throughout the work shift



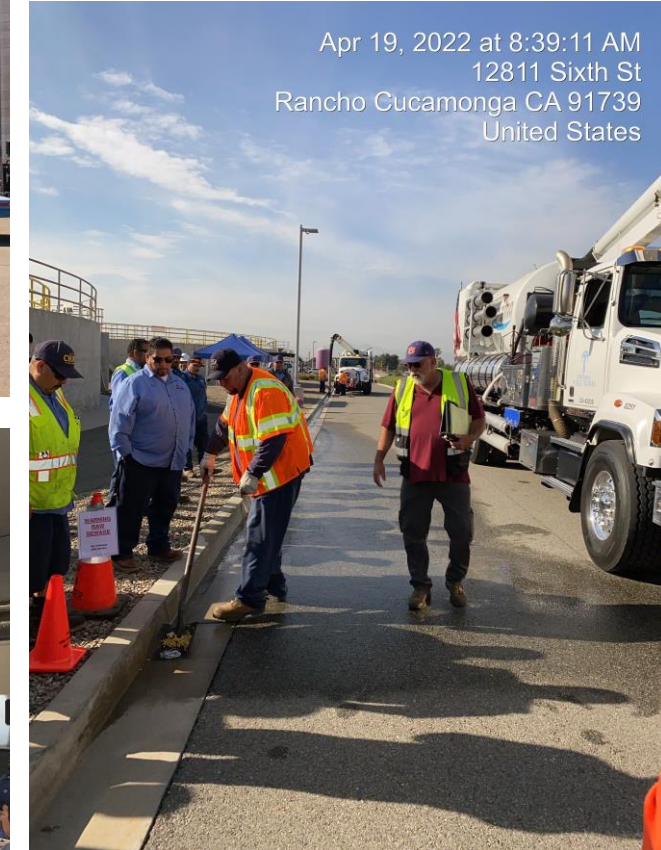
Operations

- **Agency Wide:** NPDES permit is updated
- **RP-1 and RP-4:** Install of CL2 analyzers at RP-1 & RP-4
- **RP-5:** Title V AQMD permit
- **RP-1 and RP-5:** Annual Title V AQMD Inspections
- **Educational Outreach:** Facility tours and participated in several career fairs.



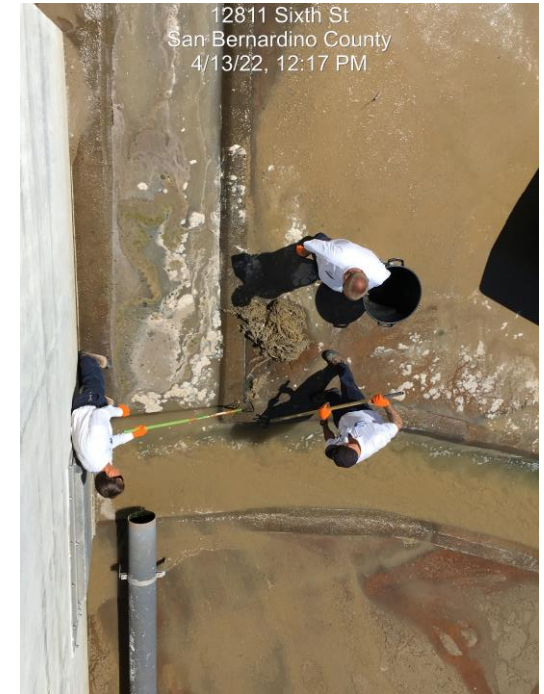
Mutual Aid Coordination

- Sewer Collections Team hosted the first ever Multi-Agency Sanitary Sewer Overflow Drill.
- Total of 6 Agencies/Cities
- Training consisted of multiple SSO simulations and bypass support.
- Hosted first meeting between member Agencies for the Sewer Collections and Environmental Compliance teams.



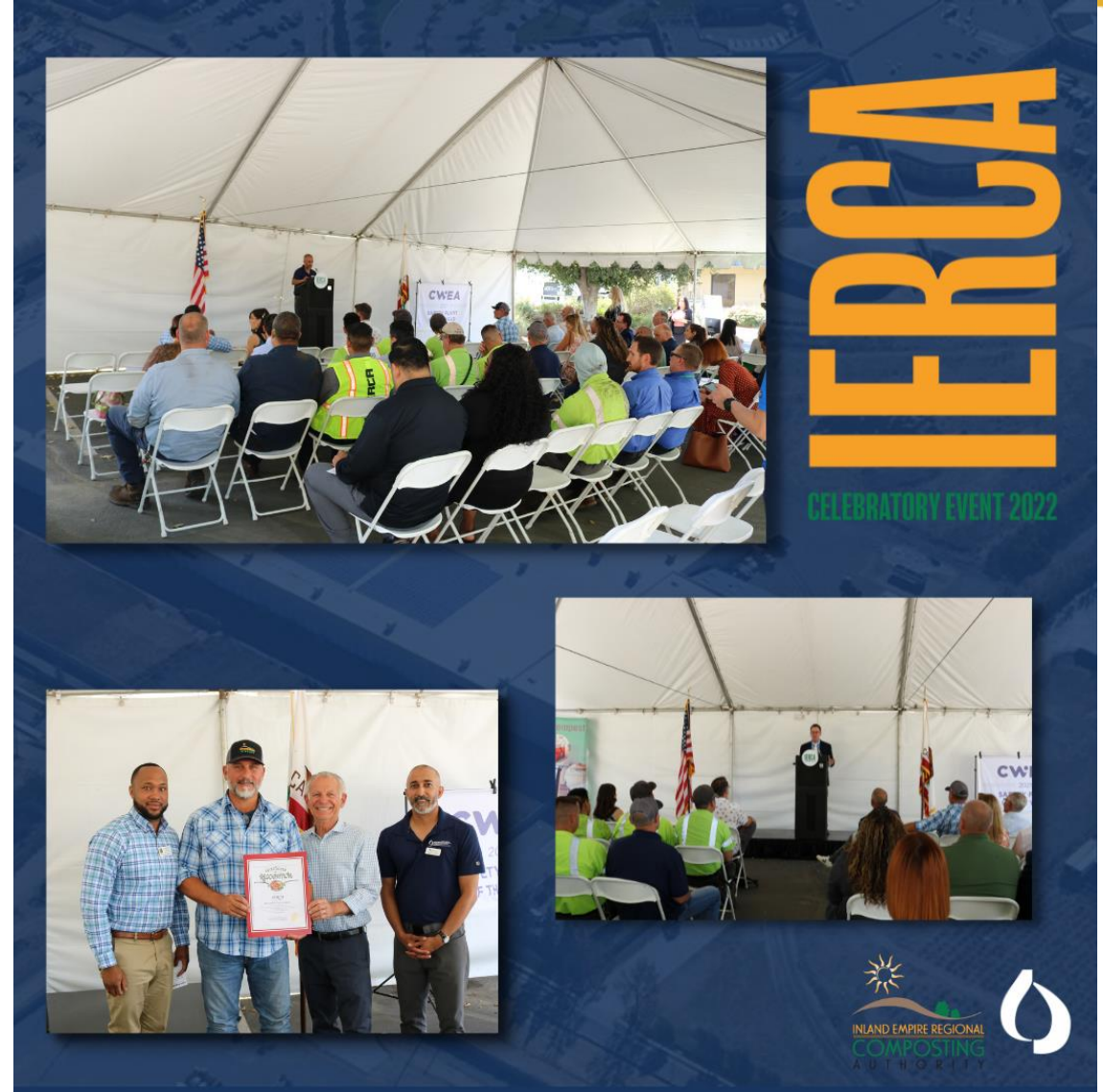
Operational Challenges

- RP-2 Stockpile at drying beds
- CCWRF ammonia due to local manufacture
- CCWRF foaming incident
- Increase in Fats, Oils, and Grease (FOG) & Ragging



IERCA Update

- Celebrate IERCA's milestones
 - Selling 3 million cubic yards of compost
 - US Composting Council Manufacturer of the Year Award
 - California Water Environment Association Safety Plant of the Year Award



Hyperion Water Reclamation Plant Tour



**Thank you LA
City Sanitation**



Hyperion Water Reclamation Plant

- Members of Technical Resources Division leadership attended.
- Collaborations with other leaders.
- LA City Sanitation leaders provided a plant tour and overview of their incident.

RECEIVE AND
FILE

3A

Building Activity Report - YTD Fiscal Year 2021/22



Legend

- Service Area
- Unincorporated

Residential

- <=1.0
- 1.0 - 10.0
- >10.0

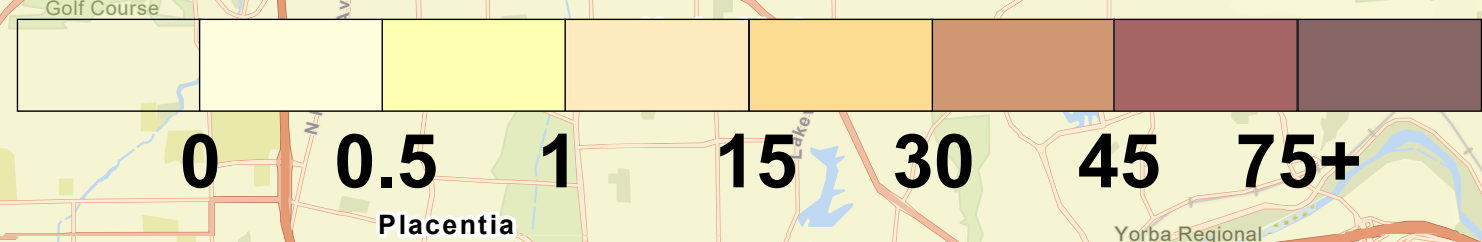
Commercial

- <=1.0
- 1.0 - 10.0
- >10.0

Industrial

- <=1.0
- 1.0 - 10.0
- >10.0

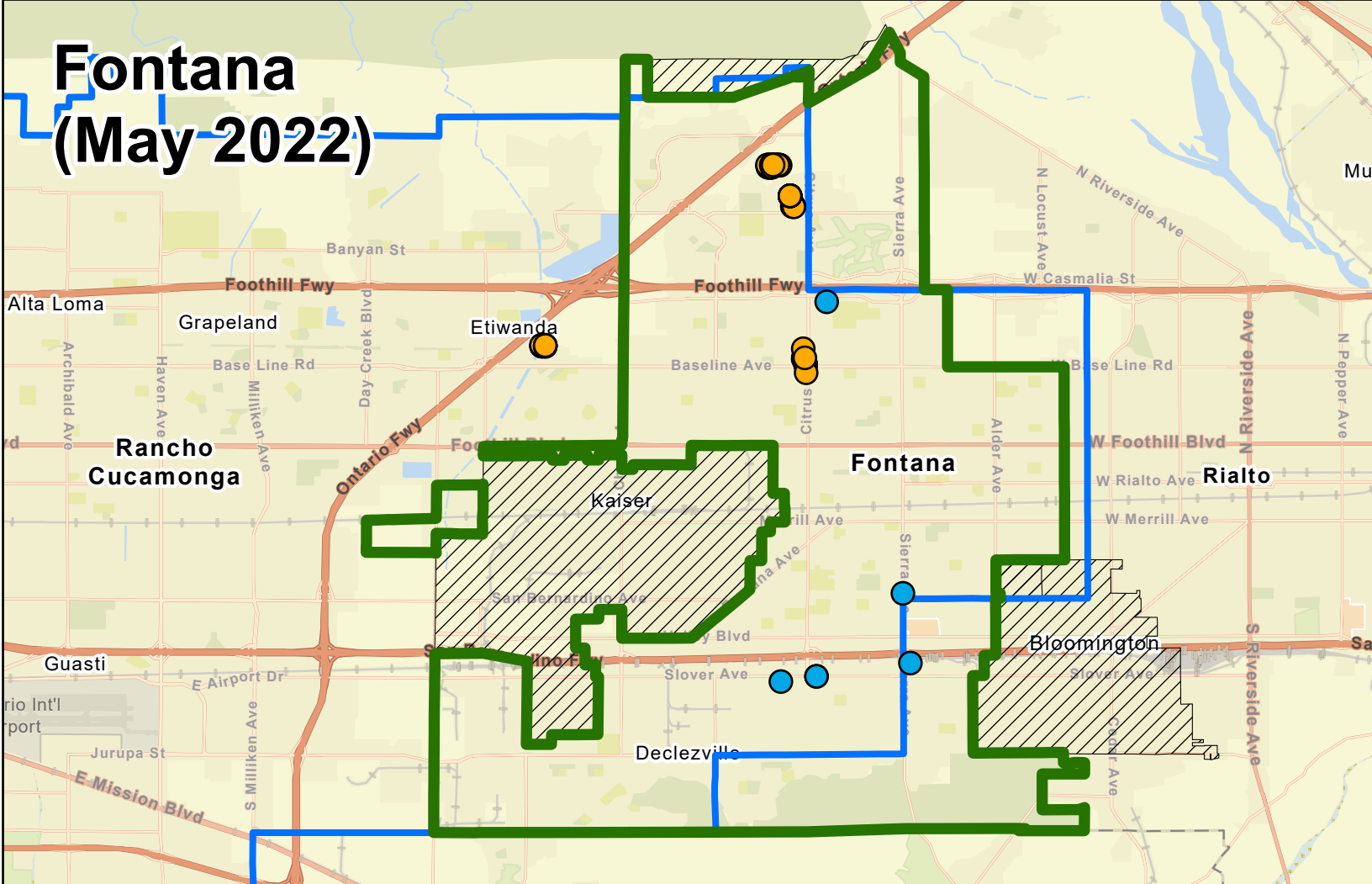
HALF MILE GRID: TOTAL EDU's (YTD)



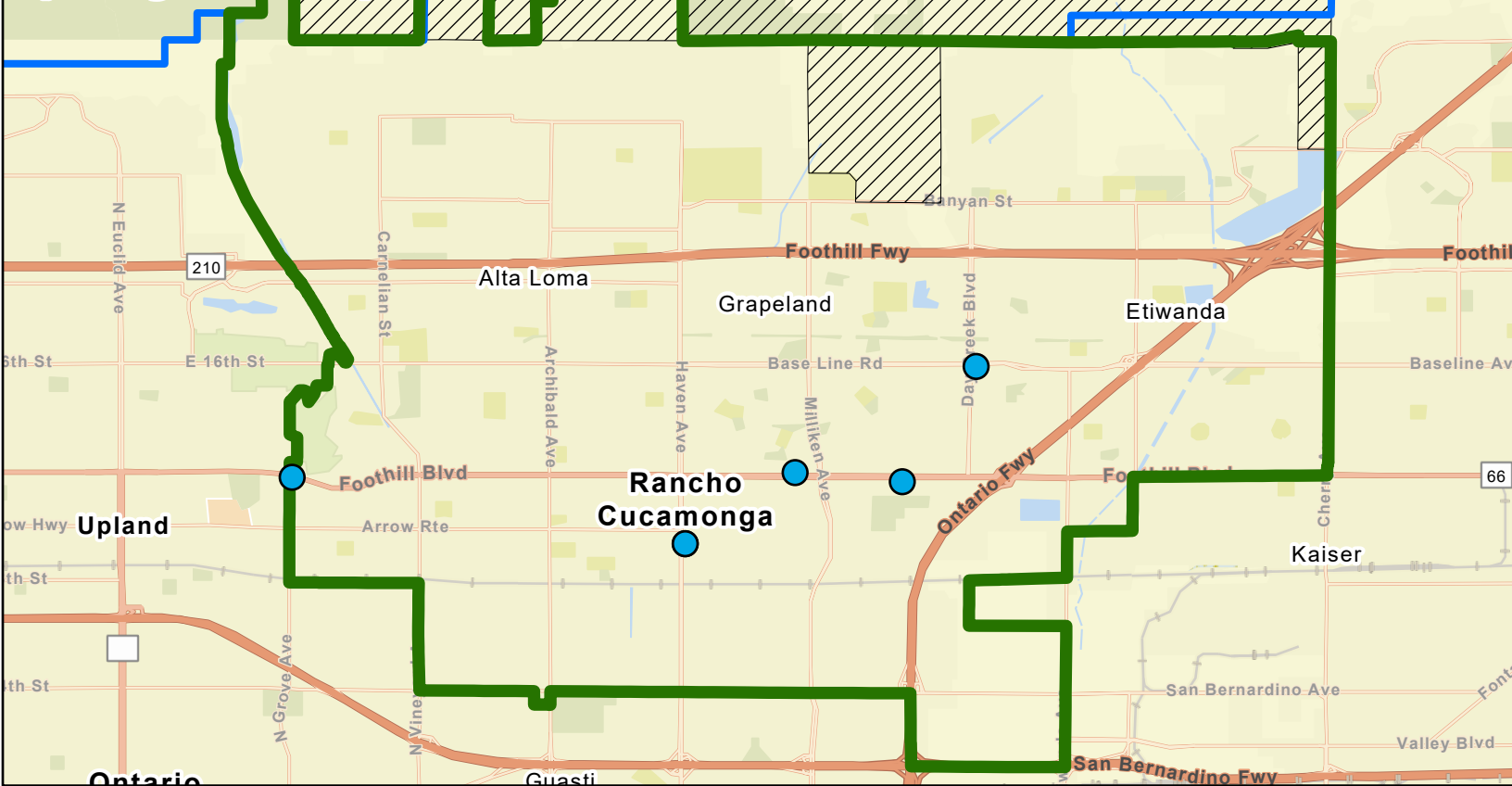
TOTAL EDU BY WASTEWATER CONNECTION TYPE (YTD)

Contracting Agency	YTD Actual				Projected
	Commercial (EDUs)	Industrial (EDUs)	Residential (EDUs)	Total (EDUs)	Total (EDUs)
Chino	80	0	687	768	434
Chino Hills	48	0	62	110	276
CVWD	104	322	329	755	2050
Fontana	111	7	652	770	1792
Montclair	10	0	0	10	474
Ontario	242	41	1181	1464	7560
Upland	23	0	43	66	952
Total	617	370	2955	3942	13538

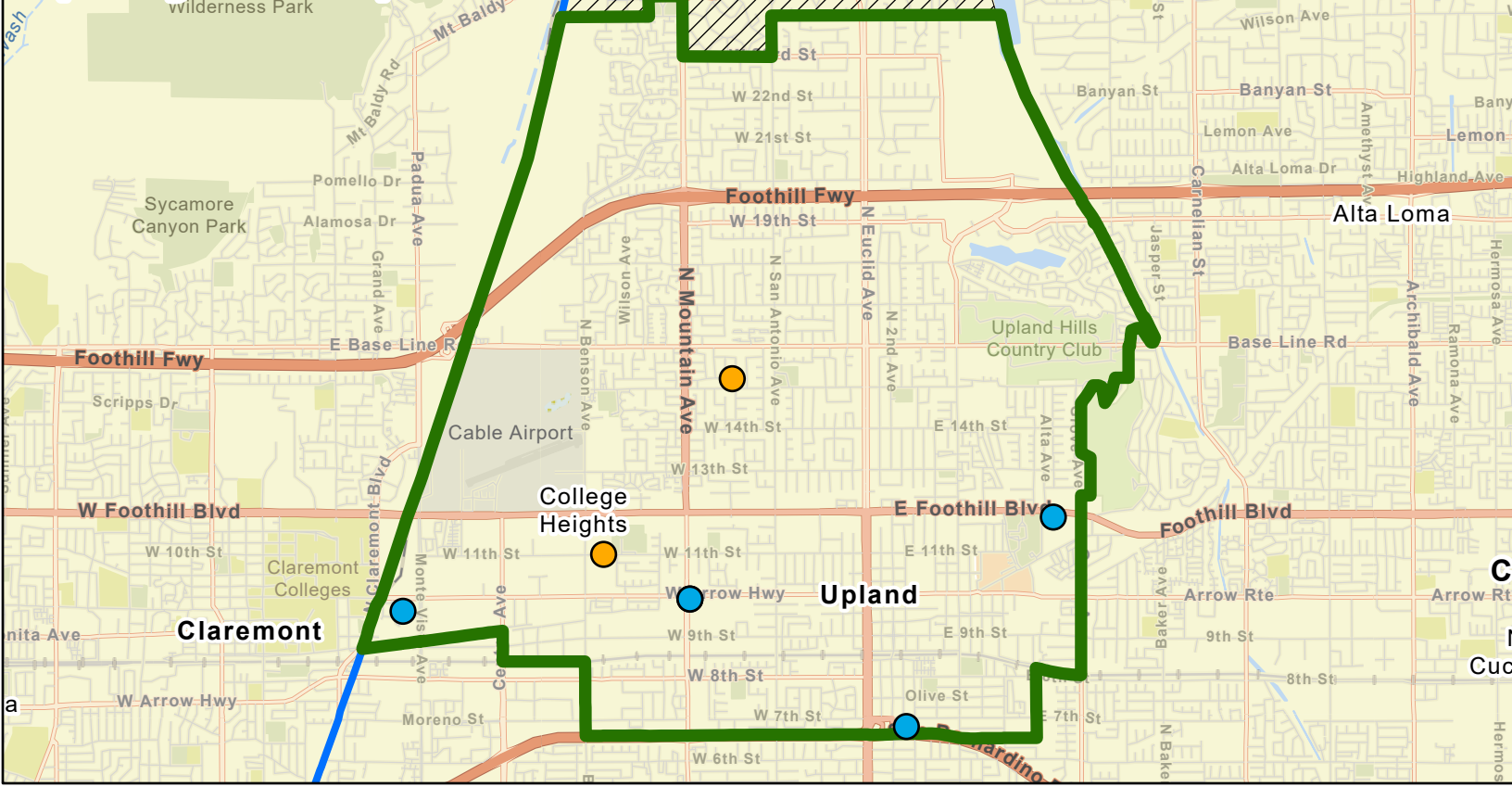
Fontana (May 2022)



Cucamonga Valley Water District (May 2022)



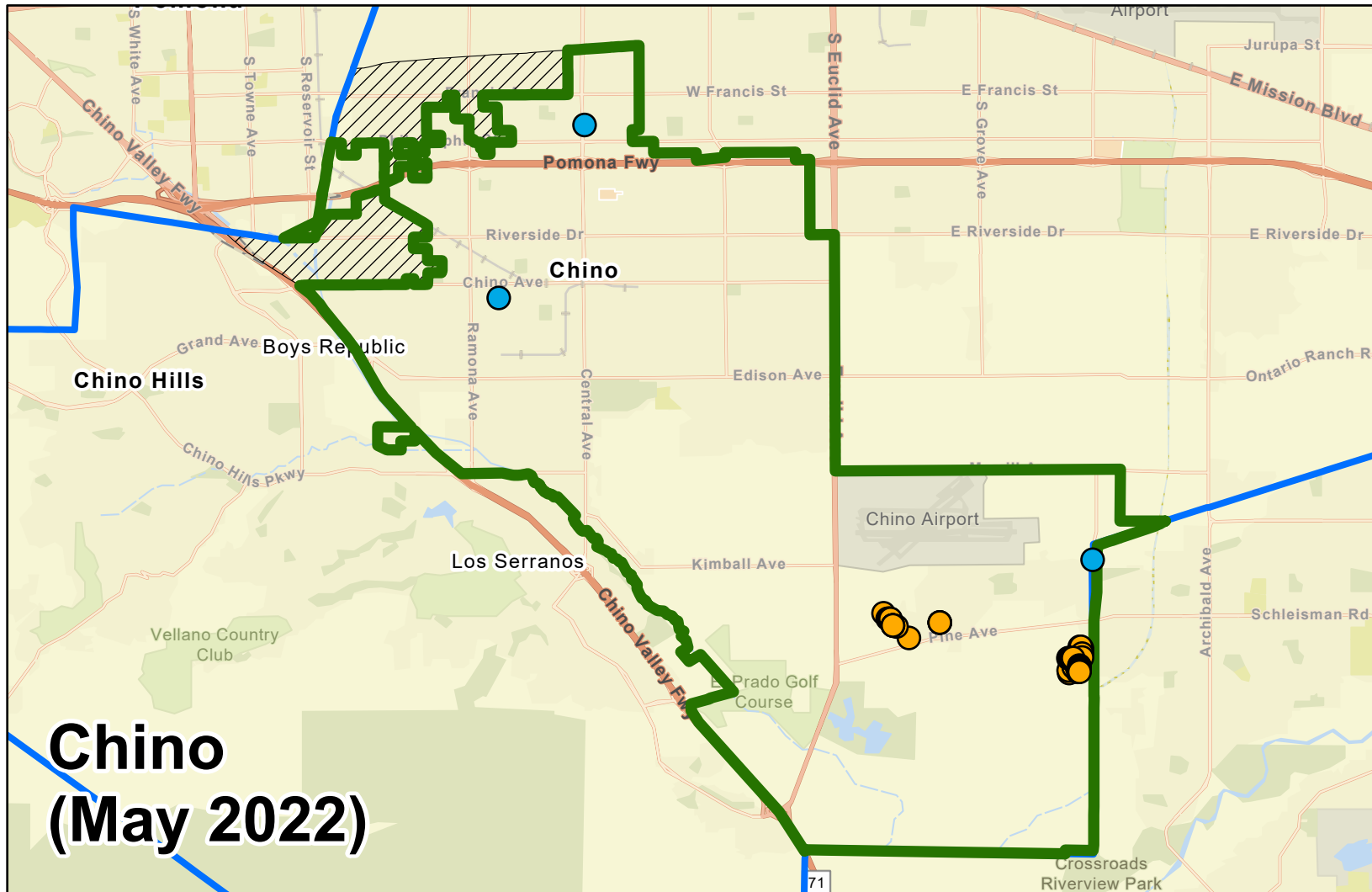
Upland (May 2022)



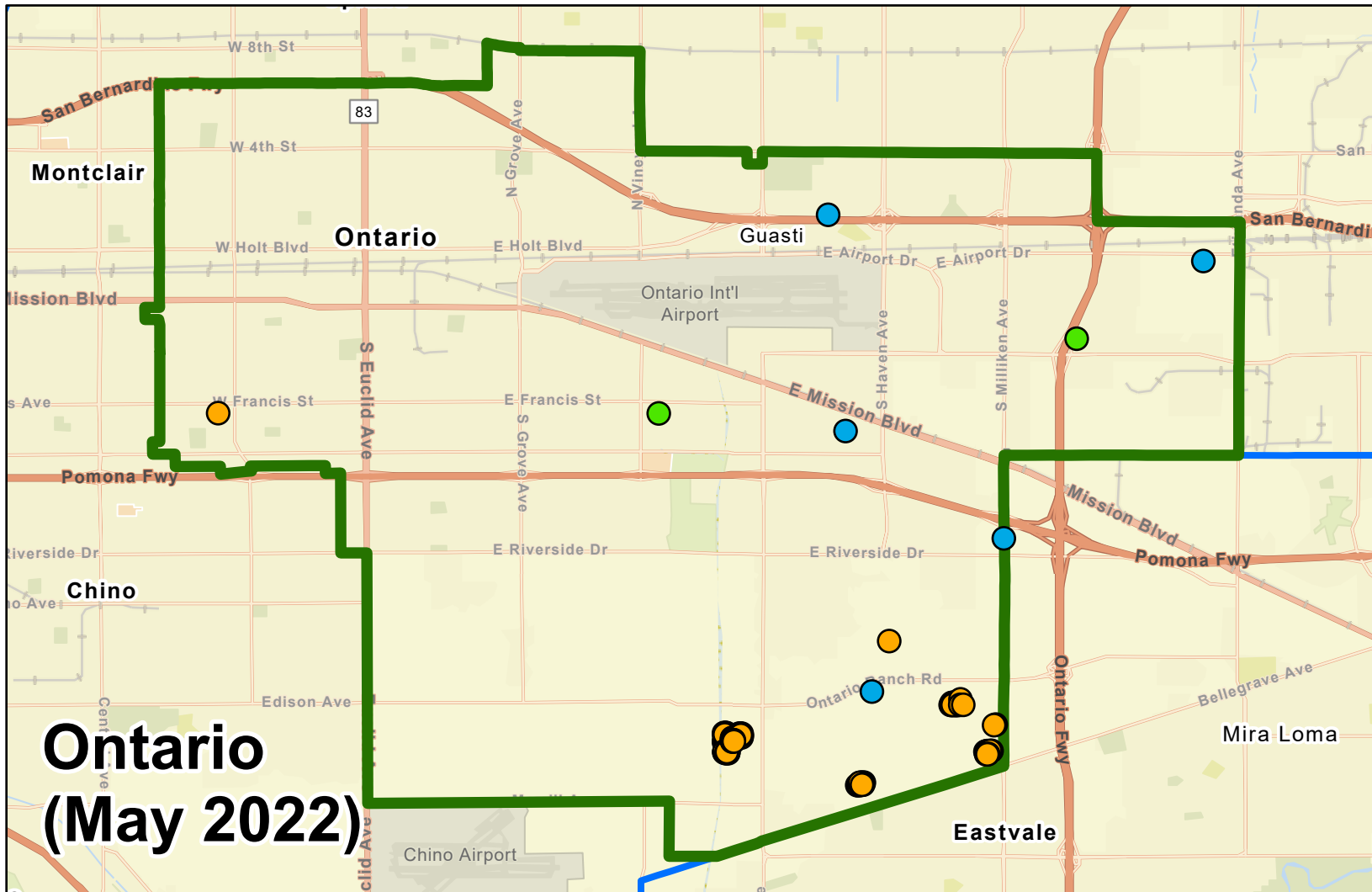
Chino Hills (May 2022)



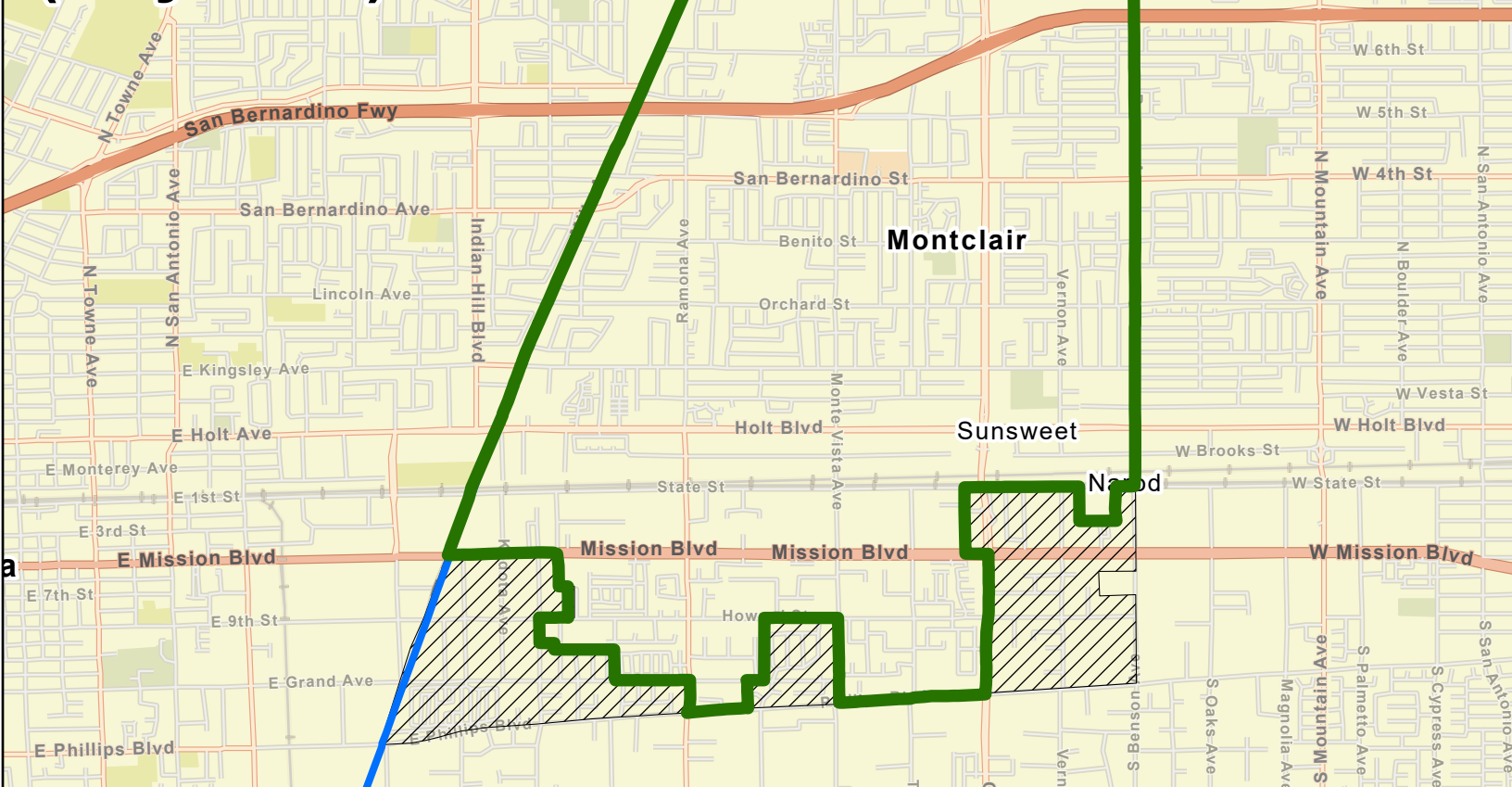
Chino (May 2022)



Ontario (May 2022)



Montclair (May 2022)



RECEIVE AND
FILE

3B

IEUA RECYCLED WATER DISTRIBUTION – JUNE 2022

TOTAL ALL PLANTS

Influent: 50.1 MGD

Delivered: 39.3 MGD

Percent Delivered: 78%

Preliminary Deliveries

RW GWR: 11.8 MGD

RW Direct Use: 27.5 MGD

RP-4

Delivered: 8.1 MGD

RP-1

Delivered: 15.6 MGD

CCWRF

Delivered: 7.2 MGD

RP-5

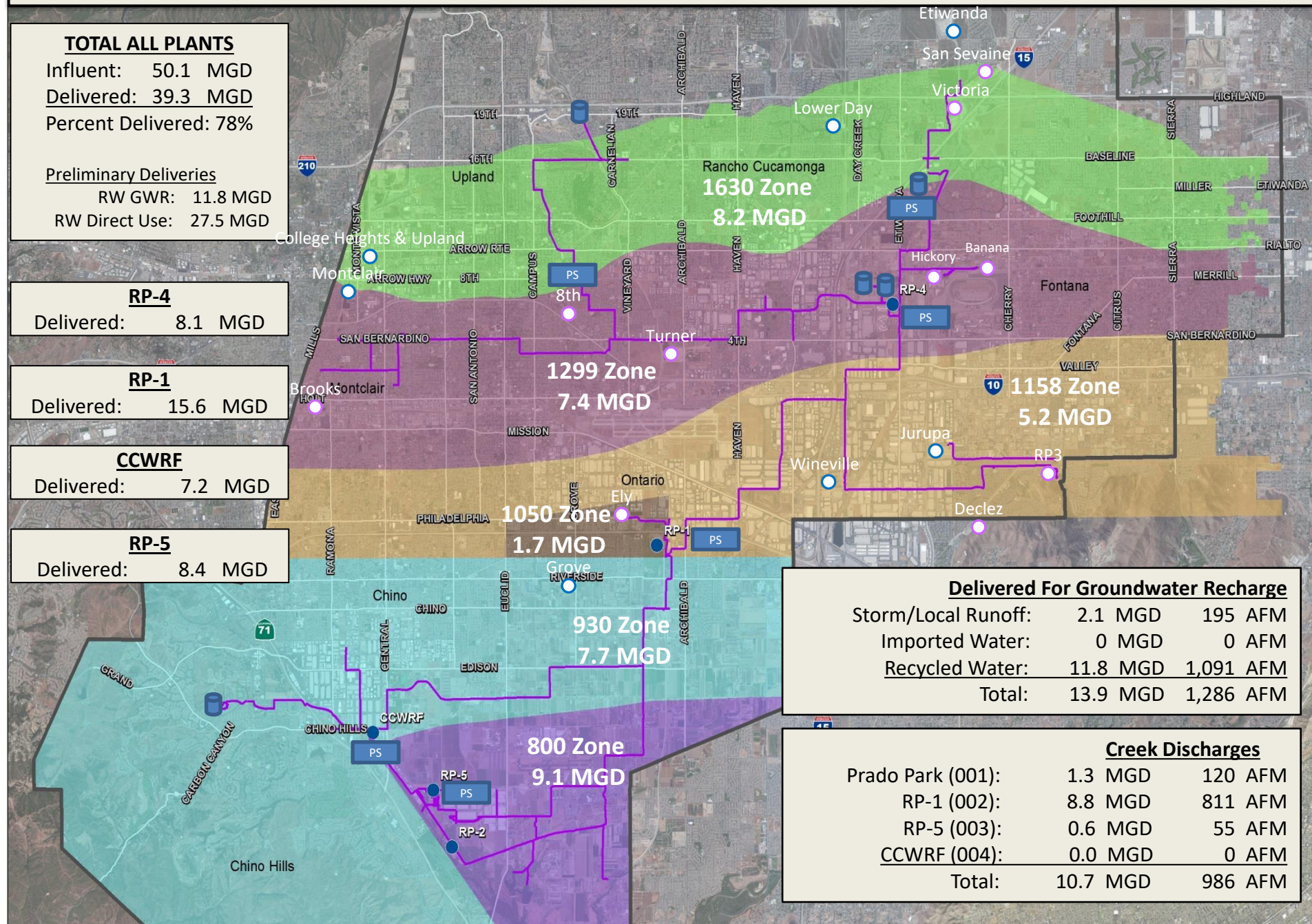
Delivered: 8.4 MGD

Delivered For Groundwater Recharge

Storm/Local Runoff:	2.1 MGD	195 AFM
Imported Water:	0 MGD	0 AFM
Recycled Water:	11.8 MGD	1,091 AFM
Total:	13.9 MGD	1,286 AFM

Creek Discharges

Prado Park (001):	1.3 MGD	120 AFM
RP-1 (002):	8.8 MGD	811 AFM
RP-5 (003):	0.6 MGD	55 AFM
CCWRF (004):	0.0 MGD	0 AFM
Total:	10.7 MGD	986 AFM



Recycled Water Recharge Deliveries - June 2022 (Acre-Feet)

Basin	6/1-6/4	6/5-6/11	6/12-6/18	6/19-6/25	6/26-6/30	Month Actual	FY To Date Actual	Deliveries are draft until reported as final and do not included evaporative losses.	
Ely	0.0	20.8	21.5	21.5	23.2	87.0	780		
Banana	0.0	0.0	0.0	0.1	0.0	0.1	578		
Hickory	16.1	42.1	40.6	32.0	8.5	139.3	1111		
Turner 1 & 2	0.0	0.0	0.0	0.0	0.0	0.0	674		
Turner 3 & 4	14.7	12.6	0.0	0.0	18.5	45.8			
8th Street	8.3	13.3	33.7	33.5	45.5	134.4	2422		
Brooks	0.0	0.0	0.0	0.0	0.0	0.0	550		
RP3	14.1	24.9	22.1	24.6	17.6	103.3	4648		
Declez	0.0	0.0	0.0	0.0	0.0	0.0	703		
Victoria	43.4	37.7	14.0	22.6	17.1	134.8	2011		
San Sevaine	50.1	100.4	112.2	120.8	63.0	446.5	3580		
Total	0.0	20.8	21.5	21.5	23.2	1,091.2	780	16,295	AF previous FY to day actual

