



Regional Sewerage Program Technical Committee Meeting

AGENDA

Thursday, February 24, 2022

2:00 p.m.

Teleconference Call

In an effort to prevent the spread of COVID-19, the Regional Sewerage Program Technical Committee Meeting will be held remotely by teleconference.

Teams Conference Link: https://teams.microsoft.com/l/meetup-join/19%3ameeting_NmRmY2FmMDYtNTBmMS00MjA5LTk3ODgtZDkyY2U3MTRmZGYz%40thread.v2/0?context=%7b%22Tid%22%3a%224c0c1e57-30f3-4048-9bd2-cd58917dcf07%22%2c%22Oid%22%3a%22329ec40e-eb94-4218-9621-6bfa0baa9697%22%7d

Teleconference: (415) 856-9169/Conference ID: 715 477 121#

This meeting is being conducted virtually by video and audio conferencing. There will be no public location available to attend the meeting; however, the public may participate and provide public comment during the meeting by calling the number provided above. Alternatively, you may email your public comments to the Recording Secretary Sally Lee at shlee@ieua.org no later than 24 hours prior to the scheduled meeting time. Your comments will then be read into the record during the meeting.

Call to Order

Roll Call

Public Comment

Members of the public may address the Committee on any item that is within the jurisdiction of the Committee; however, no action may be taken on any item not appearing on the agenda unless the action is otherwise authorized by Subdivision (b) of Section 54954.2 of the Government Code. Comments will be limited to three minutes per speaker.

(Continued)

Additions to the Agenda

In accordance with Section 54954.2 of the Government Code (Brown Act), additions to the agenda require two-thirds vote of the legislative body, or, if less than two-thirds of the members are present, a unanimous vote of those members present, that there is a need to take immediate action and that the need for action came to the attention of the local agency subsequent to the agenda being posted.

1. Action Items

- A. Approval of January 27, 2022 Technical Committee Meeting Minutes
- B. Request by the Cucamonga Valley Water District for a Regional Connection Point to the Etiwanda Trunk Sewer Connection #CW-22 (Project No. EN0000000112)

2. Informational Items

- A. Return to Sewer Study (*Oral*)
- B. Operations & Compliance Updates (*Oral*)

3. Receive and File

- A. Draft Regional Sewerage Program Policy Committee Meeting Agenda
- B. Building Activity Report
- C. Recycled Water Distribution - Operations Summary

4. Other Business

- A. Committee Member Requested Agenda Items for Next Meeting
- B. Committee Member Comments
- C. Next Regular Meeting – March 31, 2022

Adjournment

In compliance with the Americans with Disabilities Act, if you need special assistance to participate in this meeting, please contact the Recording Secretary (909) 993-1926, 48 hours prior to the scheduled meeting so that the Agency can make reasonable arrangements.

DECLARATION OF POSTING

I, Sally Lee, Executive Assistant of the Inland Empire Utilities Agency*, a Municipal Water District, hereby certify that, per Government Code Section 54954.2, a copy of this agenda has been posted at the Agency's main office, 6075 Kimball Avenue, Building A, Chino, CA and on the Agency's website at www.ieua.org at least seventy-two (72) hours prior to the meeting date and time above.

In compliance with the Americans with Disabilities Act, if you need special assistance to participate in this meeting, please contact Sally Lee at (909) 993-1926 or shlee@ieua.org 48 hours prior to the scheduled meeting so that IEUA can make reasonable arrangements to ensure accessibility.

**ACTION
ITEM**

1A



Regional Sewerage Program Technical Committee Meeting MINUTES OF JANUARY 27, 2022

CALL TO ORDER

A regular meeting of the IEUA/Regional Sewerage Program – Technical Committee was held via teleconference on Thursday, January 27, 2022. Committee Chair Nicole deMoet/City of Upland called the meeting to order at 2:03 p.m. Recording Secretary Sally Lee took roll call and established a quorum was present.

ATTENDANCE via Teleconference

COMMITTEE MEMBERS PRESENT:

| | |
|-------------------|--|
| Dave Crosley | City of Chino |
| Mark Wiley | City of Chino Hills |
| Eduardo Espinoza | Cucamonga Valley Water District (CVWD) |
| Armando Martinez | City of Fontana |
| Christopher Quach | City of Ontario |
| Nicole deMoet | City of Upland |
| Christiana Daisy | Inland Empire Utilities Agency (IEUA) |

ABSENT:

| | |
|----------------|-------------------|
| Monica Heredia | City of Montclair |
|----------------|-------------------|

OTHERS PRESENT:

| | |
|------------------------|-----------------|
| Abigail Gomez | City of Fontana |
| Steve Nix | City of Fontana |
| Braden Yu | City of Upland |
| Alexander Bugbee | Unknown |
| Bob Channer | Unknown |
| Stephen Dopudja | Unknown |
| Randy Lee | IEUA |
| Jerry Burke | IEUA |
| Pietro Cambiaso | IEUA |
| Andy Campbell | IEUA |
| Javier Chagoyen-Lazaro | IEUA |
| Robert Delgado | IEUA |
| Lucia Diaz | IEUA |

OTHERS PRESENT (continued):

| | |
|-------------------|------|
| Don Hamlett | IEUA |
| Elizabeth Hurst | IEUA |
| Nolan King | IEUA |
| Sally Lee | IEUA |
| Scott Lening | IEUA |
| Eddie Lin | IEUA |
| Bonnie Marseilles | IEUA |
| Jason Marseilles | IEUA |
| Liza Munoz | IEUA |
| Cathleen Pieroni | IEUA |
| Matthew Poeske | IEUA |
| Jesse Pompa | IEUA |
| Jeanina Romero | IEUA |
| Ken Tam | IEUA |

PUBLIC COMMENTS

There were no public comments.

ADDITIONS/CHANGES TO THE AGENDA

There were no additions/changes to the agenda.

1. ACTION ITEMS**A. APPROVAL OF NOVEMBER 29, 2021 SPECIAL TECHNICAL COMMITTEE MEETING MINUTES**

Motion: By Mark Wiley/City of Chino Hills and seconded by Dave Crosley/City of Chino to approve the meeting minutes of the November 29, 2021, Regional Special Technical Committee meeting by the following vote:

Ayes: Wiley, Crosley, Daisy, Espinoza, Martinez, deMoet

Noes: None

Absent: Heredia

Abstain: Quach

The motion passed by a vote of 6 ayes, 0 noes, 1 abstain, and 1 absent.

B. REQUEST BY THE CITY OF CHINO FOR A REGIONAL CONNECTION POINT TO THE CHINO TRUNK INTERCEPTOR CHINO REGIONAL SEWER CONNECTION #C-45

Jason Marseilles/IEUA gave a brief overview of the request from the City of Chino for a Regional Connection Point to the Chino Trunk Interceptor Chino Regional Sewer Connection.

Motion: By Christopher Quach/City of Ontario and seconded by Eduardo Espinoza/CVWD to approve the request by the City of Chino for one new connection point to the Chino Trunk Interceptor (Chino Regional Sewer Connection #C-45) contingent upon: 1. Collection of permit and hydraulic modeling fees; and 2. The City of Chino providing the LAFCO approved resolution ratifying the Irrevocable Agreement to Annex the noted area for sewer service by the following vote:

Ayes: Quach, Espinoza, Crosley, Daisy, Martinez, Wiley, deMoet
Noes: None
Absent: Heredia
Abstain: None

The motion passed by a vote of 7 ayes, 0 noes, 0 abstain, and 1 absent.

2. INFORMATIONAL ITEMS

A. RIALTO WATER PRINCIPLES AGREEMENT

Elizabeth Hurst/IEUA gave an update on the Rialto Water Principles Agreement. She provided background information, a summary of the principles of agreement, and an overview of the approval process.

Committee members requested the Principles of Agreement be distributed to them. Mark Wiley/City of Chino Hills and Eduardo Espinoza/CVWD stated their support for the agreement.

Dave Crosley/City of Chino asked if the agreement secured the agreement amount, while the study was being conducted. Ms. Hurst stated that the adoption of the agreement from the City of Rialto council members and IEUA Board of Directors, would indicate the reserved right to the agreed amount of water.

B. RECYCLED WATER COST OF SERVICE STUDY

Eddie Lin/IEUA gave a brief update on the Recycled Water Cost of Service study. He reminded the Committee of the study's goals, fixed cost recovery rate structure options, timeline, and asked for input from the member agencies.

Mr. Espinoza stated his appreciation for the work on this study. Committee members from CVWD, City of Upland, and City of Ontario stated their support for keeping the current rate structure. Christopher Quach/City of Ontario asked if the Recycled Water Recharge Surcharge increase would occur regardless of any changes to the Recycled Water Rate. Mr. Lin stated that the Recycled Water Recharge Surcharge would increase over the next five years regardless of any changes to the Recycled Water Rate to achieve full cost recovery. Mr. Quach stated the City of Ontario supports the increase of the Recycled Water Recharge Surcharge.

Discussion ensued clarifying the specifics of the Recycled Water Recharge Surcharge.

C. ENGINEERING QUARTERLY PROJECT UPDATE

Jason Marseilles/IEUA provided an update on Engineering and Construction Management projects. He provided an update on three projects: Collection System Asset Management; RP-1 Old Effluent Structure Rehabilitation; and RP-4 Chlorine Contact Basin Cover Repair & Recycled Water Wet Wall Passive Overflow Line.

D. GROUNDWATER RECHARGE UPDATE

Andy Campbell/IEUA provided an update on the Recycled Water Groundwater Recharge. He gave an overview of the accumulated monthly recharge by source, recent rain activity and its effects on

groundwater recharge, groundwater recharge deliveries, annual water source history, upcoming activities, and demand history.

E. OPERATIONS DIVISION QUARTERLY UPDATE

Don Hamlett/IEUA provided an update on IEUA's safety rates, SmartCover Technology, and the Inland Empire Regional Composting Facility Reliability. Nolan King/IEUA gave an update on the Agency's cybersecurity efforts.

F. RETURN TO SEWER STUDY

Ken Tam/IEUA reported that the Data Collaborative committee has made good progress on the residential and commercial data analysis on the Return to Sewer study. He stated that the Committee obtained the residential water consumption data from CVWD and is currently integrating that data set into the overall analysis. A subgroup meeting will be scheduled in mid to late February. Mr. Tam also gave an update on the CASA study.

G. OPERATIONS & COMPLIANCE UPDATES

Mr. Tam reported that IEUA experienced an exceedance in toxicity in late December at RP-1 and currently is in an accelerated monitoring process. The Agency is working with a consultant to evaluate the cause of that toxicity. He stated that the Agency also experienced a slug of grease on January 26 at headworks at RP-4. CVWD and City of Fontana collection staff have been contacted to assist and IEUA Source Control staff is investigating the source. He stated that there were no operations or compliance issues in the southern service area. He stated that IEUA staff has been working with the City of Chino's staff to conduct surveillance monitoring downstream to suspected industries that are contributory to Carbon Canyon. They are performing additional surveillance monitoring with the City of Chino staff based on their initial results. Next steps would include enforcement action if determined appropriate. Mr. Tam thanked the City of Chino's staff for working closely with Agency staff on this matter.

3. RECEIVE AND FILE

A. DRAFT REGIONAL SEWERAGE PROGRAM POLICY COMMITTEE MEETING AGENDA

B. BUILDING ACTIVITY REPORT

C. RECYCLED WATER DISTRIBUTION – OPERATIONS SUMMARY

Items 3A through 3C were received and filed by the Committee.

4. TECHNICAL COMMITTEE ITEMS DISTRIBUTED

There were no items distributed.

5. OTHER BUSINESS

A. IEUA GENERAL MANAGER'S UPDATE

Christiana Daisy/IEUA stated the Agency experienced vandalism at Turner Basin last week. She stated that a pressure gauge was sheared off and caused a recycled water release, but all released water was contained within the basin so there was no compliance issue. Staff worked with the Ontario Police Department, Facilities staff, and a contractor to remove an encampment at the basin.

She also shared that the IERCF received the Large-Scale Compost Manufacturer of the Year award from the United States Composting Council. Finally, she stated that the State Water Resources Control Board adopted the wastewater arrearages payment program guidelines last week in order to provide funding relief to wastewater agencies and wastewater billing entities for unpaid residential and commercial customer debt accrued during the COVID-19 pandemic for the period between March 4, 2020 and June 15, 2021.

B. COMMITTEE MEMBER REQUESTED AGENDA ITEMS FOR NEXT MEETING

There were no requested agenda items.

C. COMMITTEE MEMBER COMMENTS

Mr. Quach expressed his appreciation to IEUA staff for their presentations and to Mr. Lin for his collaboration and support during the past week.

D. NEXT MEETING – FEBRUARY 24, 2022

ADJOURNMENT – Chair deMoet adjourned the meeting at 3:11 p.m.

Prepared by:

Sally Lee, Executive Assistant

**ACTION
ITEM**

1B

Date: February 24, 2022

To: Regional Technical Committee

From: Inland Empire Utilities Agency

Subject: Request by the Cucamonga Valley Water District (CVWD) for a Regional Connection Point to the Etiwanda Trunk Sewer Connection # CW-22 (Project No. EN0000000112)

RECOMMENDATION

It is recommended that the Regional Technical Committee conditionally approve the request by the Cucamonga Valley Water District (CVWD) for one new connection point to the Etiwanda Trunk Sewer (CVWD Regional Sewer Connection # CW-22) contingent upon:

1. CVWD providing the LAFCO approved resolution ratifying the Irrevocable Agreement to Annex the noted area for sewer service.

BACKGROUND

On February 8th, 2022, Inland Empire Utilities Agency (IEUA) received a request from the CVWD (Attachment “A”) for the approval of a new Regional Connection to the Etiwanda Trunk Sewer at Station 50+12.73, through an existing manhole located on the west side of the 36” trunk sewer.

The connection point will serve a warehouse and an office located in the City of Rancho Cucamonga north of Napa Street, south of Whittram Avenue, west of the San Sevaine Channel, and east of Etiwanda Avenue (ATTACHMENT “B”). The development encompasses approximately 35 Acres. As the property is located in the City of Rancho Cucamonga and CVWD’s sphere of influence, CVWD is currently in the process of obtaining an approved resolution ratifying the Irrevocable Agreement to Annex the noted area for sewer service from the Local Area Formation Commission. (LAFCO).

Average Dry Weather Flows were provided by the CVWD and peaked, using IEUA’s peaking factors for this connection:

SUMMARY OF FLOW RATES UTILIZED

CVWD Regional Connection CW-22:

Average Dry Weather Flow (ADWF) Rate =0.00743 MGD

Peak Dry Weather Flow (PDWF) Rate = 0.002605 MGD

Peak Wet Weather Flow (PWWF) Rate =0.003683 MGD

The hydraulic model was used to evaluate the Etiwanda Trunk to RP-4. The hydraulic analysis shows that the connections will not create a capacity deficiency within the noted collection system at buildout under PWWF. The Etiwanda Trunk has a d/D of 0.37 and a flowrate of 14.21 MGD, just below the proposed connection. The full capacity of this 36-inch line is 49.94 MGD, leaving an available capacity of 35.73 MGD. The capacity to RP-4 is sufficient to meet the flows added by this development.

ATTACHMENT A
Cucamonga Valley Water District Request
Received on February 8, 2022

John Bosler
Secretary/General Manager/CEO

February 8, 2022

Mr. Matthew Poeske
Office Engineer
Inland Empire Utility Agency
6075 Kimball Avenue
Chino, CA 91710

Subject: Request for Regional Sewer Connection to the 36-inch Trunk Sewer Located in Etiwanda Avenue at Napa Street from the east.

Dear Mr. Poeske,

The Cucamonga Valley Water District (District) is requesting a new Regional Point of Connection for a property on Napa Street in the City of Rancho Cucamonga. The property sits east of the intersection of Etiwanda Avenue and Napa Street. Although the property is within the sphere of influence for the District, we do not own any sewer mains nearby. The developer for the property has requested support to make a sewer connection.

The District proposes to connect a new 12-inch VCP sewer main in the manhole at STA 50+12.73 within Etiwanda Avenue from the east side of Napa Street. Based on a modeled flow rate of 0.053567 million gallons per day (MGD), IEUA modeling from last year projected that it would not have a great impact on the flow capacity. The developer later confirmed the peak flow is closer to 0.029300 MGD and thus would have an even lower impact. The attached Flow Reports ("Plumber's Report") for their average daily flow (ADF) are even lower at 0.000743 MGD. IEUA performed hydraulic modeling using peaking for their system based on this ADF and determined a peak dry weather flow (PDWF) of 0.002605 MGD and peak wet weather flow (PWWF) of 0.003683 MGD. We have also attached sewer connection plans, a figure of the sewer tributary area, and a map showing the District boundary and the City of Rancho Cucamonga boundary in relation to the property of interest.

Please let us know if you need any additional information.

Thank you,



Eduardo Espinoza, PE
Assistant General Manager
Cucamonga Valley Water District

Attachments:

Bldg A Flow Report – Napa Speedway
Bldg B Flow Report – Napa Speedway
Hillwood Napa Sewer Exhibit
Hillwood – Sewer Tributary Area_2021-06-29
CVWD-CRC boundary map

Copy:

Tuan Truong, PE, Cucamonga Valley Water District
Amanda Coker, PE, Cucamonga Valley Water District
Giditi Ludesirishoti, PE, Cucamonga Valley Water District
Nikolas Baykal, PE, Cucamonga Valley Water District

American
CONTRACTORS, Inc.
PLUMBING & PIPELINE

American Contractors Inc
404 W. Blueridge Ave.
Orange, CA 92865
Ph: 714-282-5700
Fax: 714-282-5710

"Plumbers Report"

Project Address: 13160 Napa Street, Rancho Cucamonga CA

A. Average Daily Flow Calculation

1. Flow calculation based on 150 occupants
 - a. Office: 10,000 sf - 50 occ.
 - b. Warehouse: 490,648 sf - 99 occ.
 - c. Average Daily Flow = 498 Gallons Per Day

| Average Daily Flow | | | | | | |
|-----------------------|-----|----------------|--------------------|----------|-----------------|-----------------|
| | QTY | PER PERSON USE | TOTAL USES PER DAY | DURATION | FIXTURE GPF/GPM | GALLONS PER DAY |
| Water Closet (Female) | 75 | 3 | 225 | 1 | 1.28 | 288 |
| Water Closet (Male) | 75 | 1 | 75 | 1 | 1.28 | 96 |
| Urinal | 75 | 2 | 150 | 1 | 0.125 | 19 |
| Lavatory | 150 | 3 | 450 | 0.25 | 0.5 | 56 |
| Drinking Fountain | 75 | 1 | 75 | 0.5 | 0.5 | 19 |
| Mop Sink | 1 | 1 | 1 | 10 | 1 | 10 |
| Hose Bibb | 1 | 1 | 1 | 2 | 5 | 10 |
| AVERAGE DAILY FLOW | | | | | | 498 |

B. Peak Dry Weather & Wet Weather Flow

1. Plumbing Scope only includes inside the building premises. There are no known impacts of dry or wet weather inside the building to the estimated average daily flow.


Gilbert Wiggam
President
American Contractors Inc.





American Contractors Inc
404 W. Blueridge Ave.
Orange, CA 92865
Ph: 714-282-5700
Fax: 714-282-5710

“Plumbers Report”

Project Address: 13120 Napa Street, Rancho Cucamonga CA

A. Average Daily Flow Calculation

1. Flow calculation based on 80 occupants
 - a. Office: 10,000 sf - 50 occ.
 - b. Warehouse: 140,266 sf - 29 occ.
 - c. Average Daily Flow = 275 Gallons Per Day

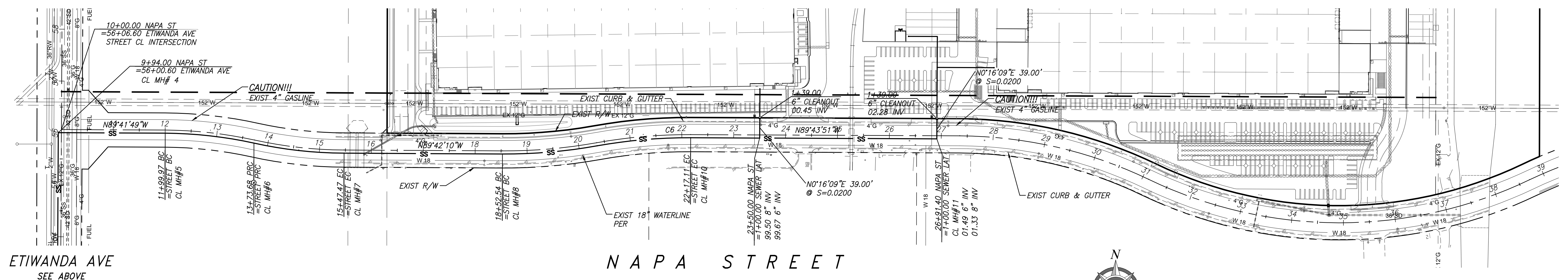
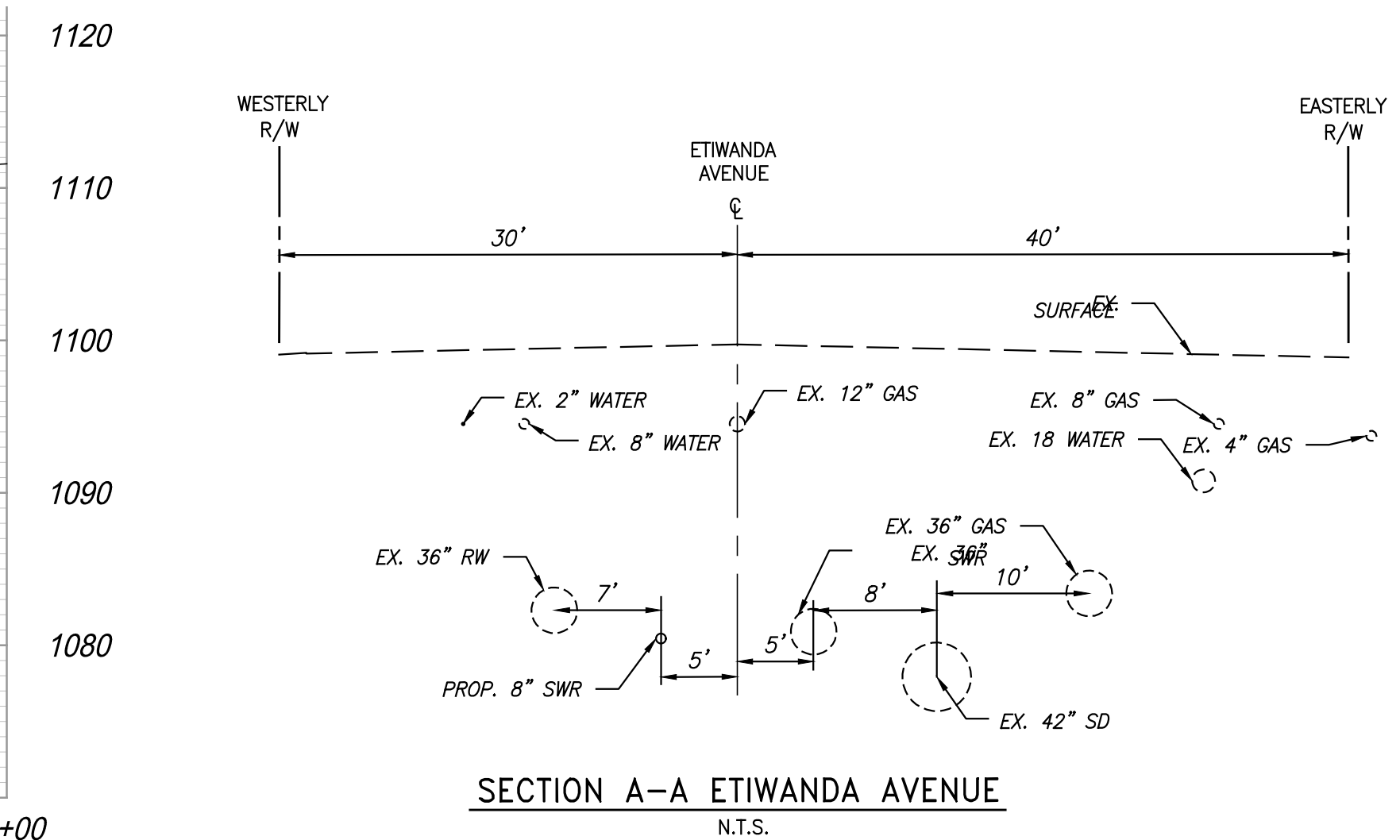
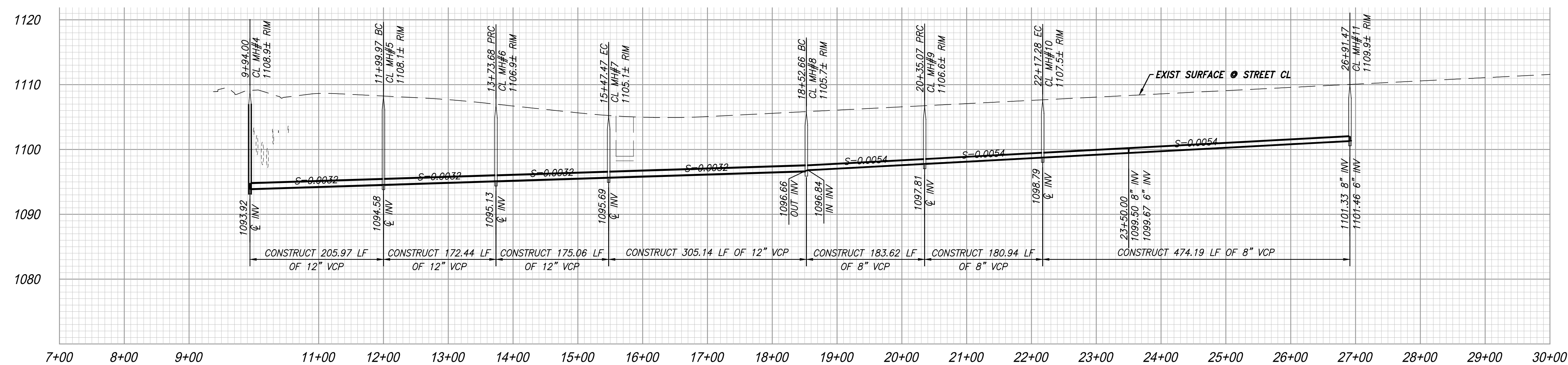
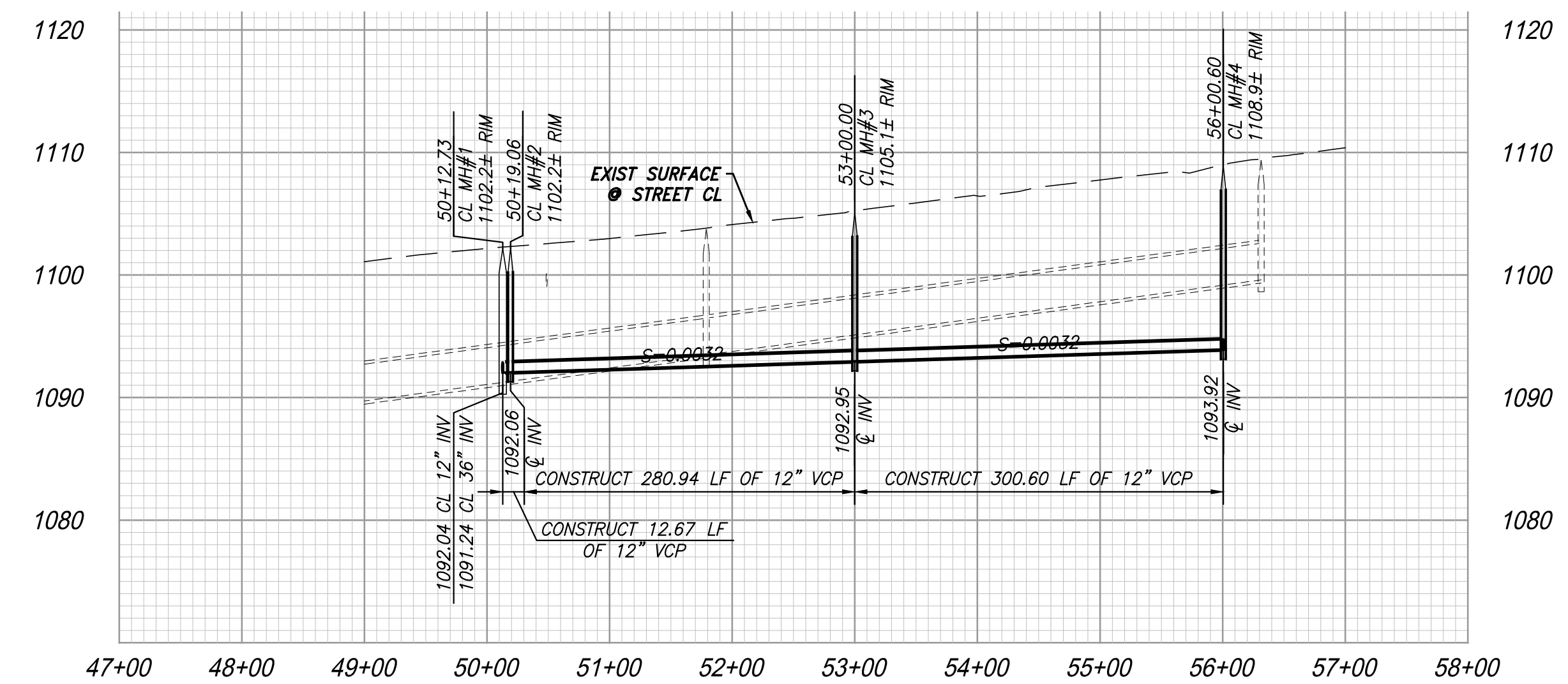
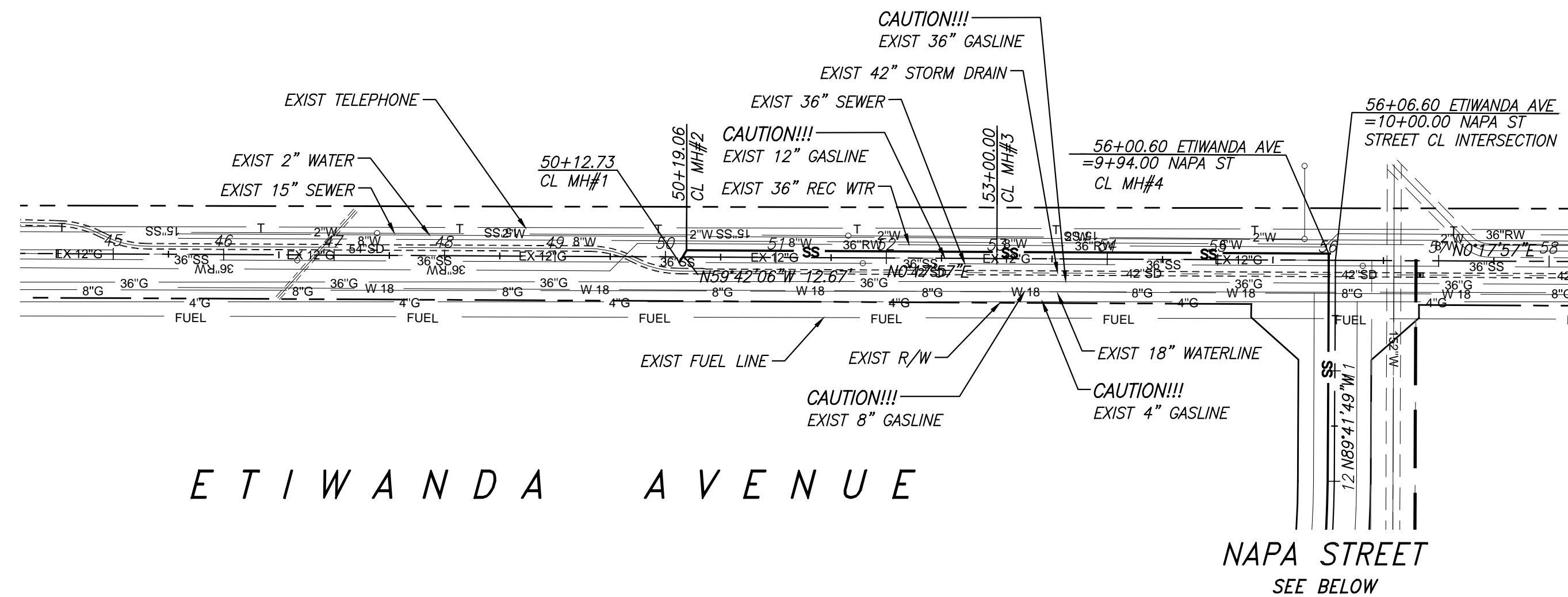
| Average Daily Flow | | | | | | |
|---------------------------|-----|----------------|--------------------|----------|-----------------|-----------------|
| | QTY | PER PERSON USE | TOTAL USES PER DAY | DURATION | FIXTURE GPF/GPM | GALLONS PER DAY |
| Water Closet (Female) | 40 | 3 | 120 | 1 | 1.28 | 154 |
| Water Closet (Male) | 40 | 1 | 40 | 1 | 1.28 | 51 |
| Urinal | 40 | 2 | 80 | 1 | 0.125 | 10 |
| Lavatory | 80 | 3 | 240 | 0.25 | 0.5 | 30 |
| Drinking Fountain | 40 | 1 | 40 | 0.5 | 0.5 | 10 |
| Mop Sink | 1 | 1 | 1 | 10 | 1 | 10 |
| Hose Bibb | 1 | 1 | 1 | 2 | 5 | 10 |
| AVERAGE DAILY FLOW | | | | | | 275 |

B. Peak Dry Weather & Wet Weather Flow

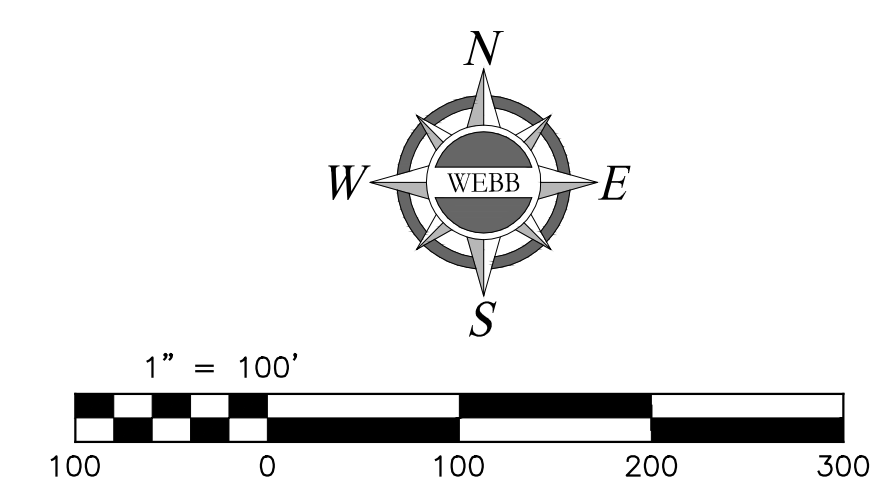
1. Plumbing Scope only includes inside the building premises. There are no known impacts of dry or wet weather inside the building to the estimated average daily flow.

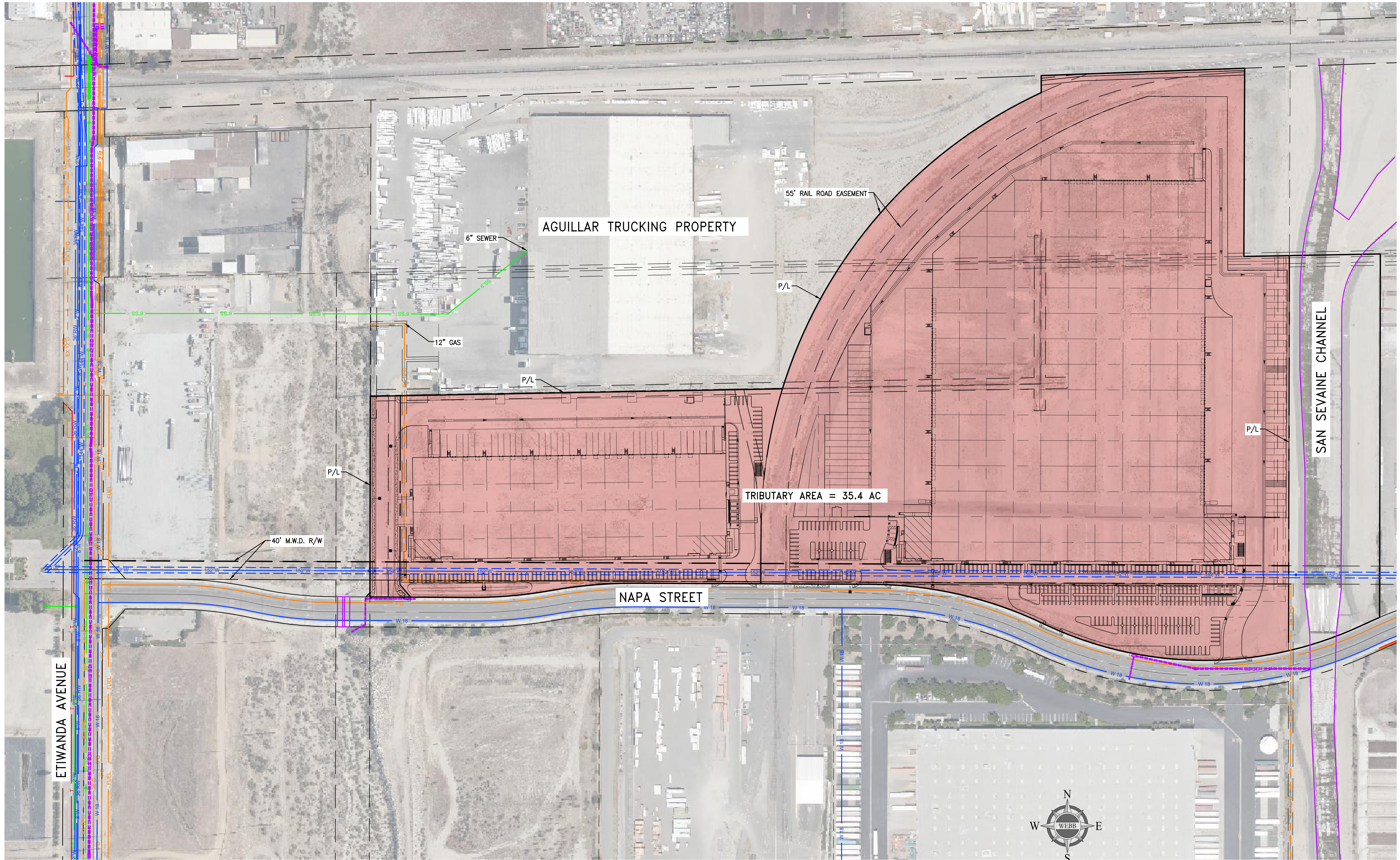

Gilbert Wiggam
President
American Contractors Inc.





HILLWOOD – SEWER EXHIBIT

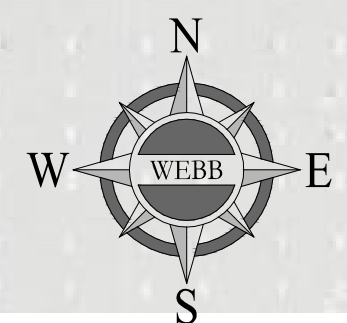
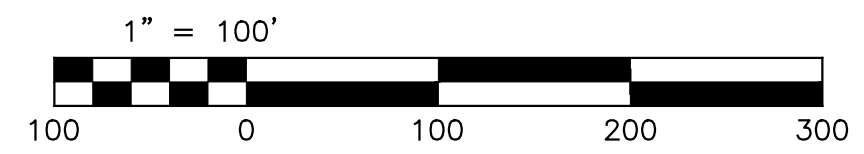


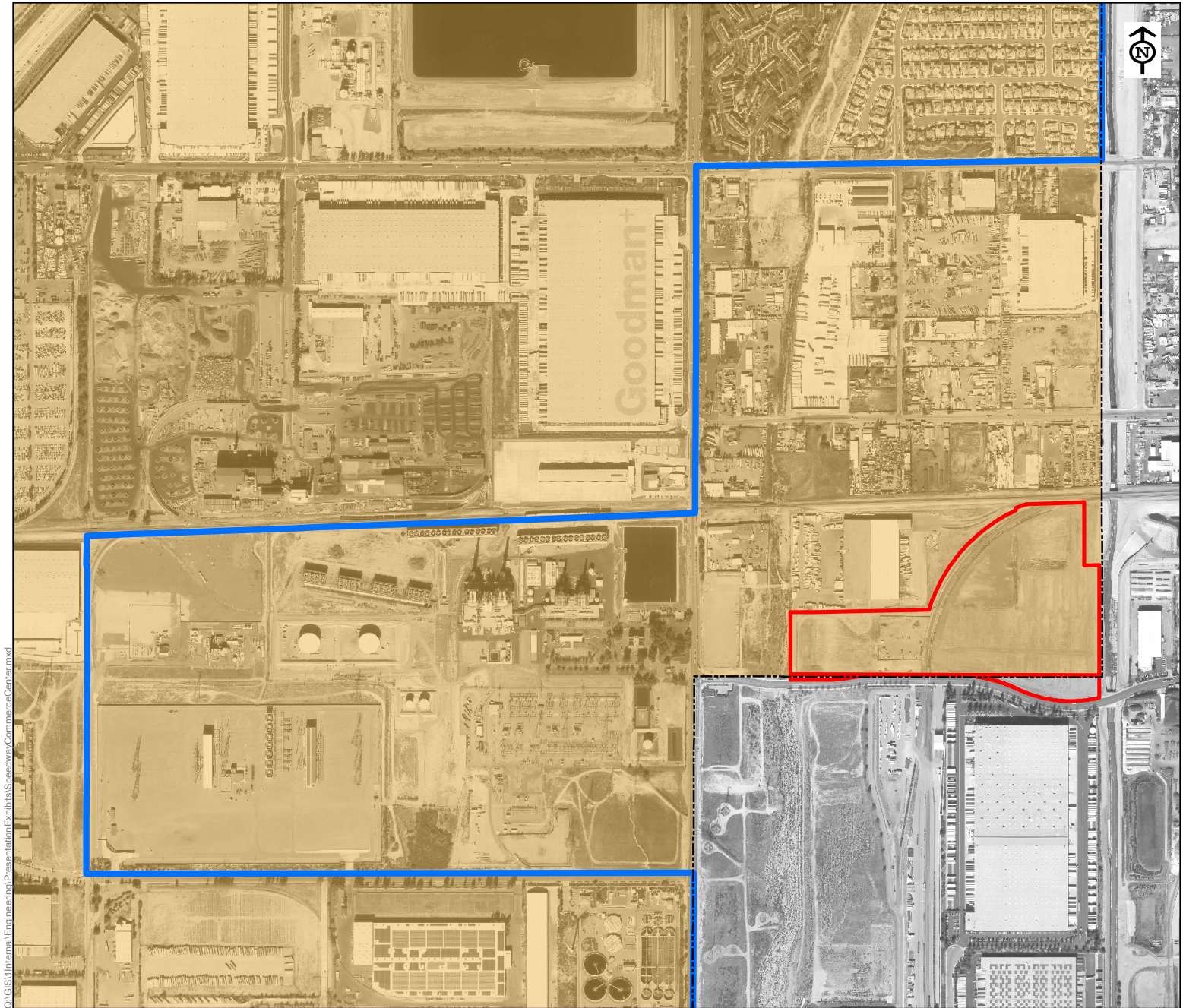


HILLWOOD – SEWER TRIBUTARY AREA

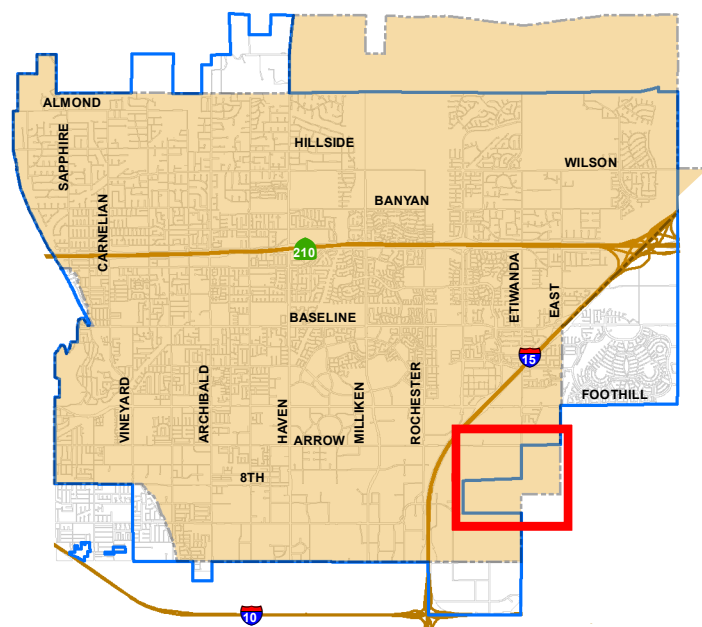
LEGEND

- WATER
- SEWER
- STORM DRAIN
- TELEPHONE
- ELECTRICAL
- GAS





© GIS Internal Engineering Presentation Exhibits Speedway Commerce Center.mxd



INDEX MAP
NOT TO SCALE

- Project Site
- CVWD Boundary
- City of Rancho Cucamonga Boundary

VICINITY MAP

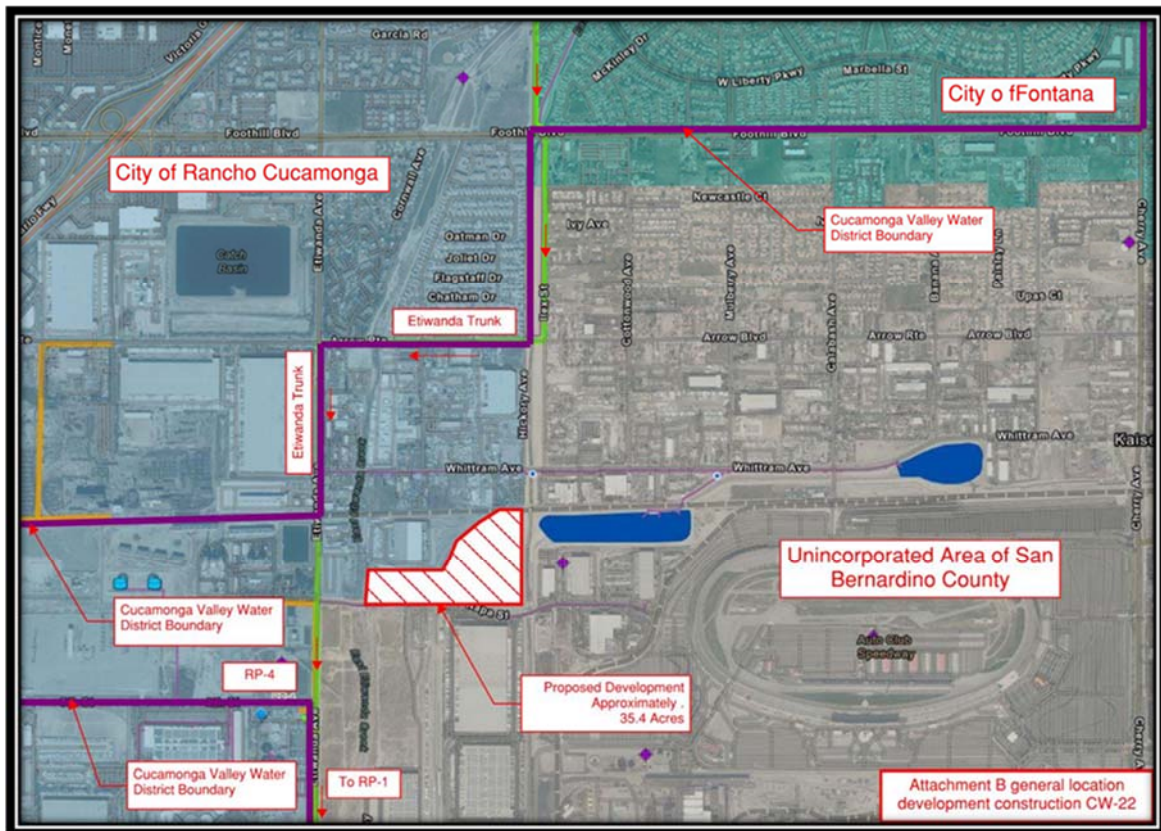
SPEEDWAY COMMERCE CENTER



Service Beyond Expectation

ATTACHMENT B
General Location for Connection CW-22

PWWF=0.003683



RECEIVE AND
FILE

3A



Regional Sewerage Program Policy Committee Meeting

AGENDA
Thursday, March 3, 2022
3:30 p.m.
Teleconference Call

In an effort to prevent the spread of COVID-19, the Regional Sewerage Program Policy Committee Meeting will be held remotely by teleconference.

Teams Conference Link: https://teams.microsoft.com/l/meetup-join/19%3ameeting_NWU1NzA2NDktM2VjMC00NDU1LTkxMmUtMiYyMjA2YWM3YWU4%40thread.v2/0?context=%7b%22Tid%22%3a%224c0c1e57-30f3-4048-9bd2-cd58917dcf07%22%2c%22Oid%22%3a%22329ec40e-eb94-4218-9621-6bfa0baa9697%22%7d

Teleconference: 1-415-856-9169/Conference ID: 552 973 583#

This meeting is being conducted virtually by video and audio conferencing. There will be no public location available to attend the meeting; however, the public may participate and provide public comment during the meeting by calling the number provided above. Alternatively, you may email your public comments to the Recording Secretary Sally Lee at shlee@ieua.org no later than 24 hours prior to the scheduled meeting time. Your comments will then be read into the record during the meeting.

Call to Order/Flag Salute

Roll Call

Public Comment

Members of the public may address the Committee on any item that is within the jurisdiction of the Committee; however, no action may be taken on any item not appearing on the agenda unless the action is otherwise authorized by Subdivision (b) of Section 54954.2 of the Government Code.
Comments will be limited to three minutes per speaker.

(Continued)

Additions to the Agenda

In accordance with Section 54954.2 of the Government Code (Brown Act), additions to the agenda require two-thirds vote of the legislative body, or, if less than two-thirds of the members are present, a unanimous vote of those members present, that there is a need to take immediate action and that the need for action came to the attention of the local agency subsequent to the agenda being posted.

- 1. Technical Committee Report** *(Oral)*
- 2. Action Item**
 - A. Approval of February 3, 2022 Policy Committee Meeting Minutes
- 3. Informational Items**
 - A. Regional Contract Negotiation Update *(Oral)*
- 4. Receive and File**
 - A. Building Activity Report
 - B. Recycled Water Distribution – Operations Summary
- 5. Other Business**
 - A. IEUA General Manager's Update
 - B. Committee Member Requested Agenda Items for Next Meeting
 - C. Committee Member Comments
 - D. Next Meeting – April 7, 2022

Adjourn

DECLARATION OF POSTING

I, Sally Lee, Executive Assistant of the Inland Empire Utilities Agency*, a Municipal Water District, hereby certify that, per Government Code Section 54954.2, a copy of this agenda has been posted at the Agency's main office, 6075 Kimball Avenue, Building A, Chino, CA and on the Agency's website at www.ieua.org at least seventy-two (72) hours prior to the meeting date and time above.

In compliance with the Americans with Disabilities Act, if you need special assistance to participate in this meeting, please contact Sally Lee at (909) 993-1926 or shlee@ieua.org 48 hours prior to the scheduled meeting so that IEUA can make reasonable arrangements to ensure accessibility.

RECEIVE AND
FILE

3B

Building Activity Report - YTD Fiscal Year 2021/22



Legend

- Service Area
- Unincorporated

Residential

- <=1.0
- 1.0 - 10.0
- >10.0

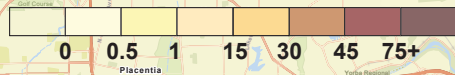
Commercial

- <=1.0
- 1.0 - 10.0
- >10.0

Industrial

- <=1.0
- 1.0 - 10.0
- >10.0

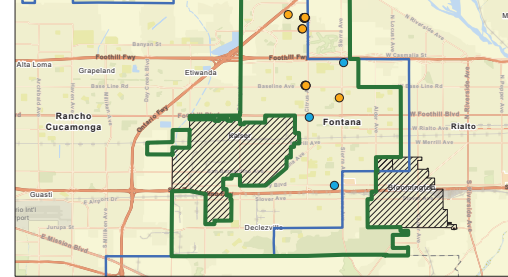
HALF MILE GRID: TOTAL EDU's (YTD)



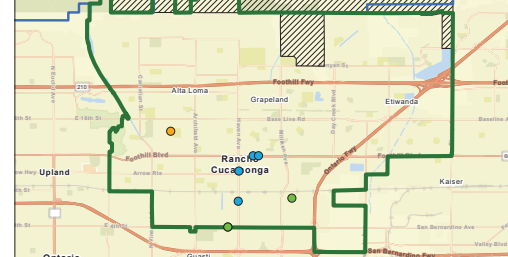
TOTAL EDU BY WASTEWATER CONNECTION-TYPE (YTD)

| Contracting Agency | YTD Actual | | | | Projected |
|--------------------|-------------------|-------------------|--------------------|--------------|--------------|
| | Commercial (EDUs) | Industrial (EDUs) | Residential (EDUs) | Total (EDUs) | Total (EDUs) |
| Chino | 62 | 0 | 229 | 291 | 434 |
| Chino Hills | 45 | 0 | 18 | 63 | 276 |
| CVWD | 65 | 268 | 195 | 527 | 2050 |
| Fontana | 36 | 0 | 339 | 375 | 1792 |
| Montclair | 9 | 0 | 0 | 9 | 474 |
| Ontario | 172 | 12 | 525 | 710 | 7560 |
| Upland | 11 | 0 | 28 | 39 | 952 |
| Total | 399 | 281 | 1334 | 2014 | 13538 |

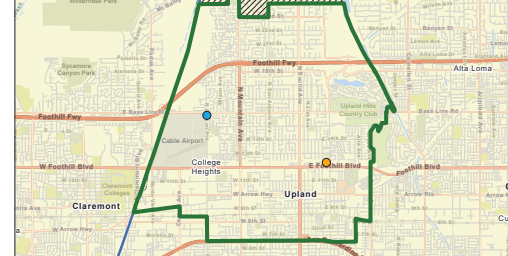
Fontana (November 2021)



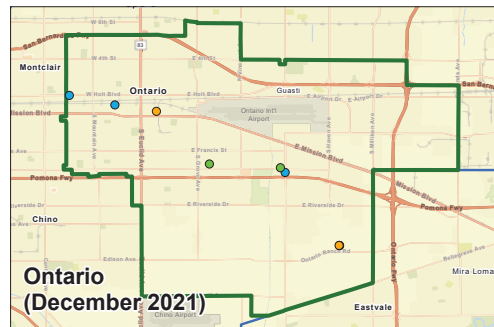
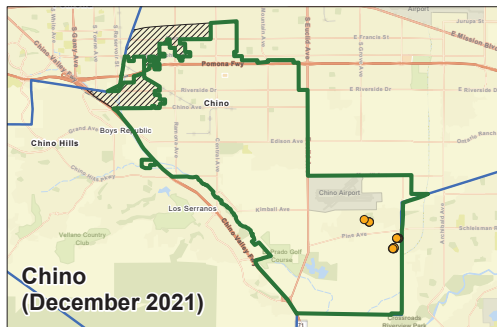
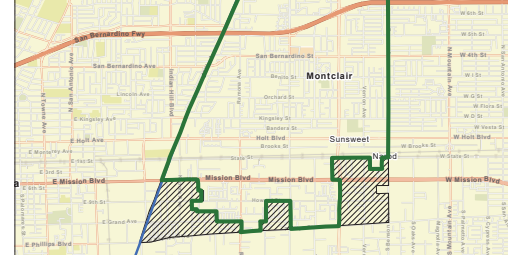
Cucamonga Valley Water District (December 2021)



Upland (December 2021)



Montclair (December 2021)



RECEIVE AND
FILE

3C

IEUA RECYCLED WATER DISTRIBUTION – JANUARY 2022

TOTAL ALL PLANTS

Influent: 51.5 MGD

Delivered: 22.8 MGD

Percent Delivered: 44%

Preliminary Deliveries

RW GWR: 15.0 MGD

RW Direct Use: 7.8 MGD

RP-4

Delivered: 7.8 MGD

RP-1

Delivered: 10.6 MGD

CCWRF

Delivered: 2.0 MGD

RP-5

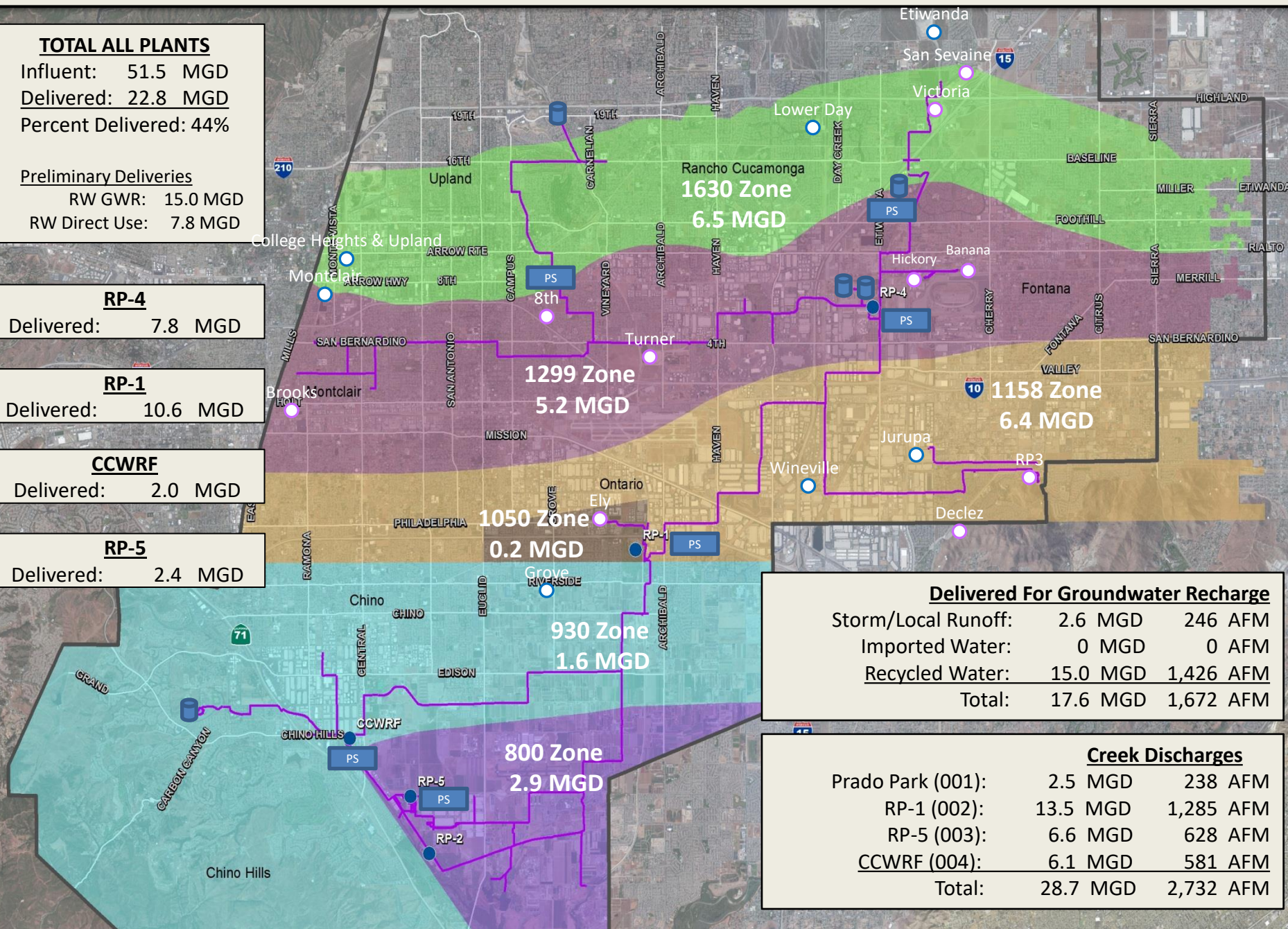
Delivered: 2.4 MGD

Delivered For Groundwater Recharge

| | | |
|---------------------|----------|-----------|
| Storm/Local Runoff: | 2.6 MGD | 246 AFM |
| Imported Water: | 0 MGD | 0 AFM |
| Recycled Water: | 15.0 MGD | 1,426 AFM |
| Total: | 17.6 MGD | 1,672 AFM |

Creek Discharges

| | | |
|-------------------|----------|-----------|
| Prado Park (001): | 2.5 MGD | 238 AFM |
| RP-1 (002): | 13.5 MGD | 1,285 AFM |
| RP-5 (003): | 6.6 MGD | 628 AFM |
| CCWRF (004): | 6.1 MGD | 581 AFM |
| Total: | 28.7 MGD | 2,732 AFM |



Recycled Water Recharge Deliveries - January 2022 (Acre-Feet)

| Basin | 1/1-1/8 | 1/9-1/15 | 1/16-1/22 | 1/23-1/31 | Month Actual | FY To Date Actual | Deliveries are draft until reported as final and do not included evaporative losses. | |
|--------------|---------|----------|-----------|-----------|--------------|-------------------|--|------------------------------|
| Ely | 0.0 | 0.0 | 0.0 | 45.7 | 45.7 | 401 | | |
| Banana | 0.0 | 7.4 | 1.3 | 16.7 | 25.4 | 392 | | |
| Hickory | 0.0 | 5.4 | 1.3 | 16.7 | 23.4 | 634 | | |
| Turner 1 & 2 | 0.0 | 0.0 | 0.0 | 0.0 | 0.0 | 466 | | |
| Turner 3 & 4 | 0.0 | 22.9 | 4.4 | 38.0 | 65.3 | | | |
| 8th Street | 21.9 | 73.4 | 83.6 | 98.2 | 277.1 | 1379 | | |
| Brooks | 0.0 | 0.0 | 0.0 | 2.7 | 2.7 | 482 | | |
| RP3 | 80.4 | 122.4 | 102.6 | 87.1 | 392.5 | 3338 | | |
| Declez | 0.0 | 0.0 | 0.0 | 4.3 | 4.3 | 492 | | |
| Victoria | 0.0 | 47.3 | 64.9 | 62.8 | 175.0 | 652 | | |
| San Sevaine | 98.3 | 81.8 | 79.8 | 155.0 | 414.9 | 1916 | | |
| Total | 200.6 | 360.6 | 337.8 | 527.2 | 1,426.2 | 10,151 | 10,579 | AF previous FY to day actual |

