



Special Regional Sewerage Program Technical Committee Meeting

AGENDA Thursday, May 20, 2021 10:00 a.m. Teleconference Call

PURSUANT TO THE PROVISIONS OF EXECUTIVE ORDER N-25-20 ISSUED BY GOVERNOR GAVIN NEWSOM ON MARCH 12, 2020, AND EXECUTIVE ORDER N-29-20 ISSUED BY GOVERNOR GAVIN NEWSOM ON MARCH 17, 2020 ANY COMMITTEE MEMBER MAY CALL INTO THE COMMITTEE MEETING WITHOUT OTHERWISE COMPLYING WITH ALL BROWN ACT'S TELECONFERENCE REQUIREMENTS.

In effort to prevent the spread of COVID-19, the Regional Sewerage Program Policy Committee Meeting will be held remotely by teleconference.

Teleconference: (415) 856-9169/Conference ID: 159 946 06#

This meeting is being conducted virtually by video and audio conferencing. There will be no public location available to attend the meeting; however, the public may participate and provide public comment during the meeting by calling into the number provided above. Alternatively, you may email your public comments to the Recording Secretary Sally H. Lee at shlee@ieua.org no later than 24 hours prior to the scheduled meeting time.

Your comments will then be read into the record during the meeting.

Call to Order

Roll Call

Public Comment

Members of the public may address the Committee on any item that is within the jurisdiction of the Committee; however, no action may be taken on any item not appearing on the agenda unless the action is otherwise authorized by Subdivision (b) of Section 54954.2 of the Government Code. Comments will be limited to three minutes per speaker.

Additions to the Agenda

In accordance with Section 54954.2 of the Government Code (Brown Act), additions to the agenda require two-thirds vote of the legislative body, or, if less than two-thirds of the members are present, a unanimous vote of those members present, that there is a need to take immediate action and that the need for action came to the attention of the local agency subsequent to the agenda being posted.

(Continued)

Special Regional Sewerage Program Technical Committee Meeting Agenda

May 20, 2021

Page 2 of 2

1. Workshop

A. External Supply Sources

2. Other Business

A. IEUA General Manager's Update

B. Committee Member Requested Agenda Items for Next Meeting

C. Committee Member Comments

D. Next Regular Meeting – May 27, 2021

Adjournment

In compliance with the Americans with Disabilities Act, if you need special assistance to participate in this meeting, please contact the Recording Secretary (909) 993-1926, 48 hours prior to the scheduled meeting so that the Agency can make reasonable arrangements.

DECLARATION OF POSTING

I, Sally H. Lee, Executive Assistant of the Inland Empire Utilities Agency, A Municipal Water District, hereby certify that a copy of this agenda has been posted to the IEUA Website at www.ieua.org and posted at the Agency's main office at 6075 Kimball Avenue, Building A, Chino, CA, on Thursday, May 13, 2021.



Sally H. Lee

**WORKSHOP
ITEM**

1A

External Supply Sources

Sylvie Lee, Manager of Strategic Planning & Resources
May 2021

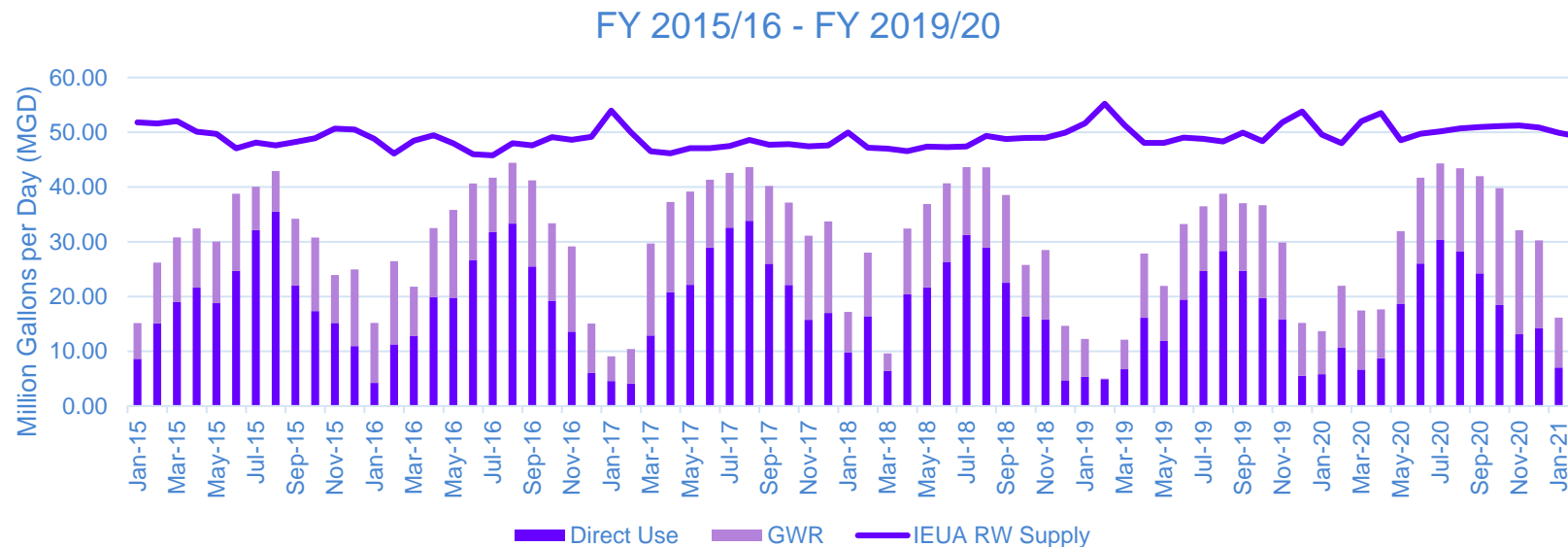
Background

- What are “External Supplies”?
 - Supply sources purchased from suppliers outside the IEUA member agencies
- 2014 Drivers to secure additional supplies
 - Interest was to bring in additional supplies to meet direct use demands and maximize groundwater recharge when there is sufficient spreading basin capacity
 - Peak summer month direct use demands (southern service area)
 - Periods of supply deficit to utilize recharge basin capacity
 - Enhance local supply reliability
 - Enable partnerships within the watershed to maximize use of local water supplies

Secure external supplies to meet summer peak demands and fully utilize recharge basin capacity

Current Conditions

- Direct use demands/peak use in southern service area has declined
- Current average recycled water (RW) recharge capacity is 16 TAFY
—IEUA is on target to recharge 16 TAFY
- Additional recharge basin capacity is needed to maximize unused supplies and external supplies



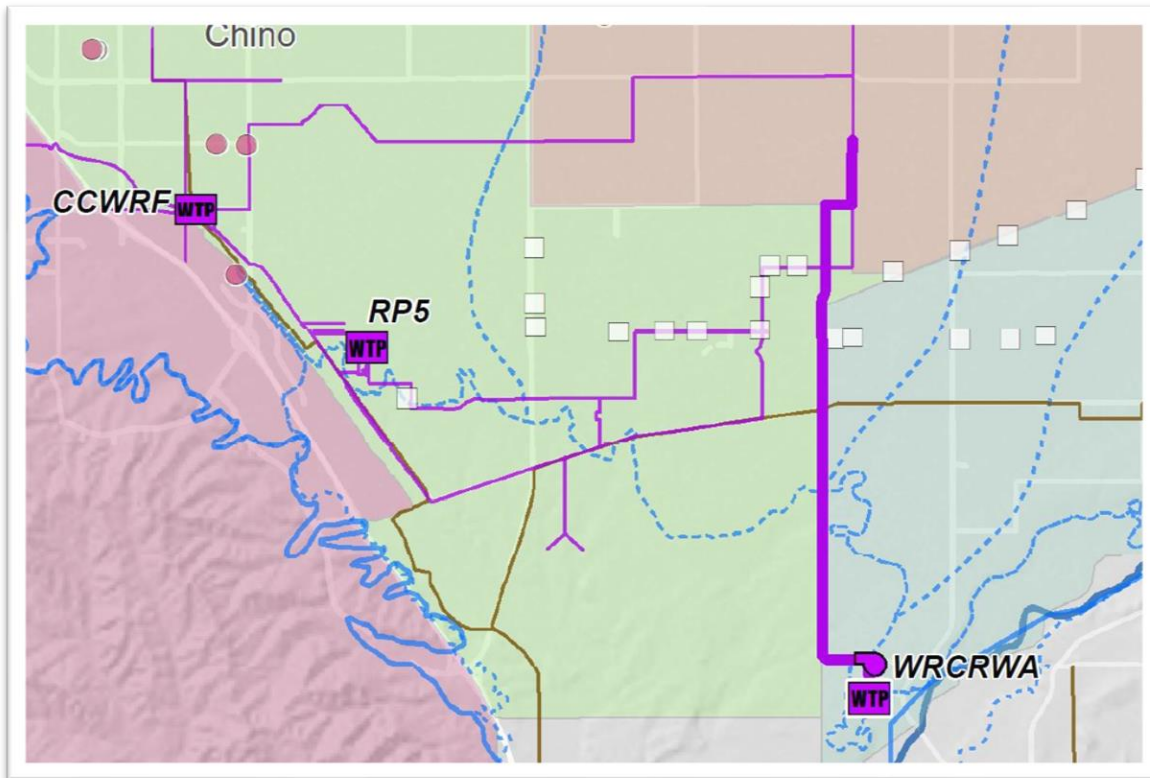
Additional investments in recharge facilities are needed to maximize use of external supplies

External Supply Opportunities

Western Municipal Water District: Interested in marketing its recycled water from Western Riverside County Regional Wastewater Authority [WRCRWA]

City of Rialto: Interested in marketing its recycled water, diversifying its water resources and financial security

External Water Sources: Western | WRCRWA

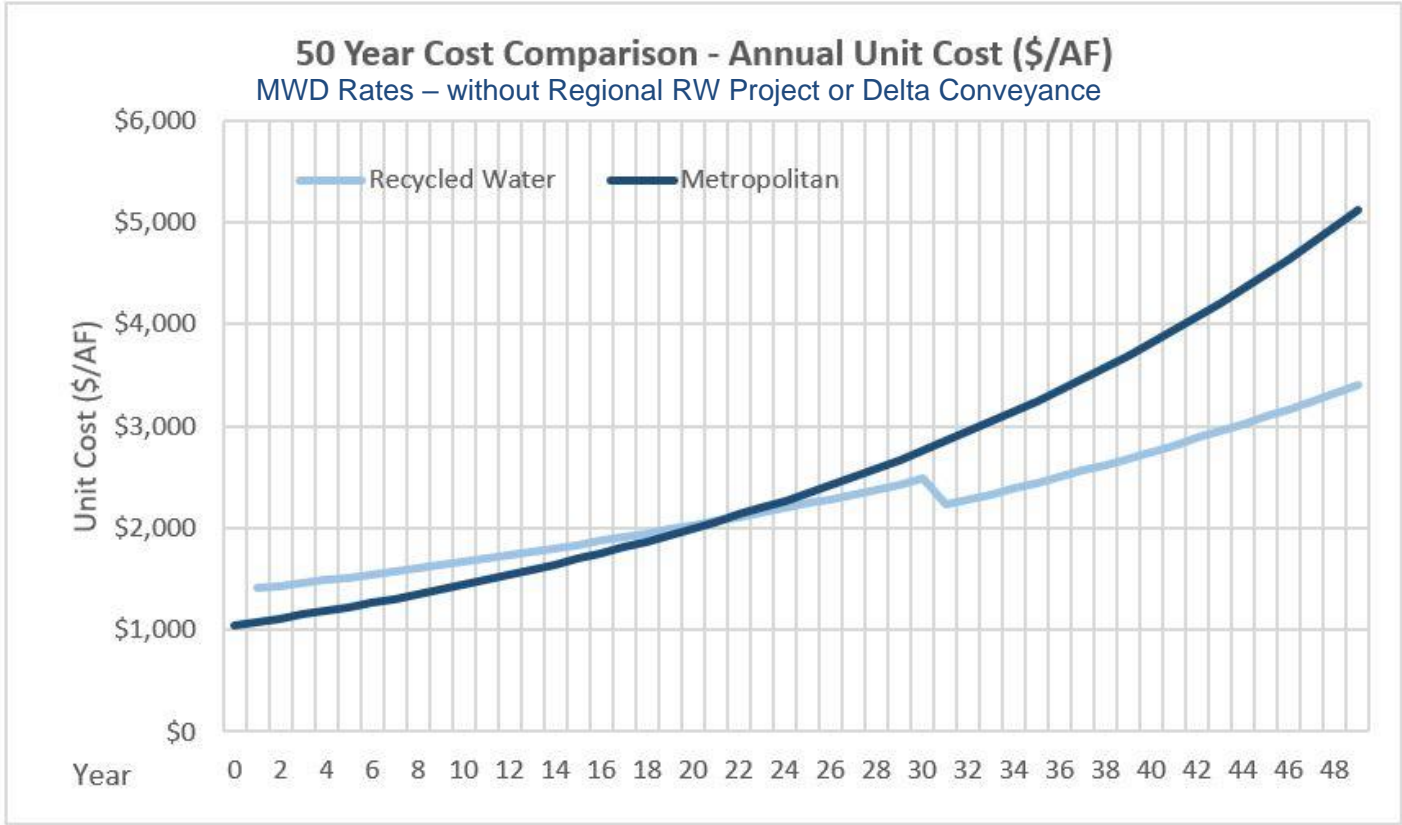


- **Discussions began in 2014**
- **WRCRWA RW Supply Available: 8 TAFY**
 - RW is not currently beneficially reused | 100% discharged to Santa Ana River
 - NPDES Permit Limit TDS: 620 mg/L
 - Change in water use diversion permit completed
- **Project Components:**
 - (1) Pump station and 5 miles of pipeline from WRCRWA to IEUA 930 pressure zone
 - Capital Cost: \$26M | Pending grants: \$5.1 M
 - **4.5 MGD for 6 months** – [May – October] | 2,500 AFY

External Water Sources: Western | WRCRWA

Term [Years]	Commodity Rate
50	\$225/AF
45	\$190/AF
40	\$150/AF
35	\$120/AF

	Rate
MWD “All-In Rate” 2021	~\$1,050/AF
Term Sheet Rate 2021\$	\$1,500/AF
NPV (50 Years)	\$930/AF

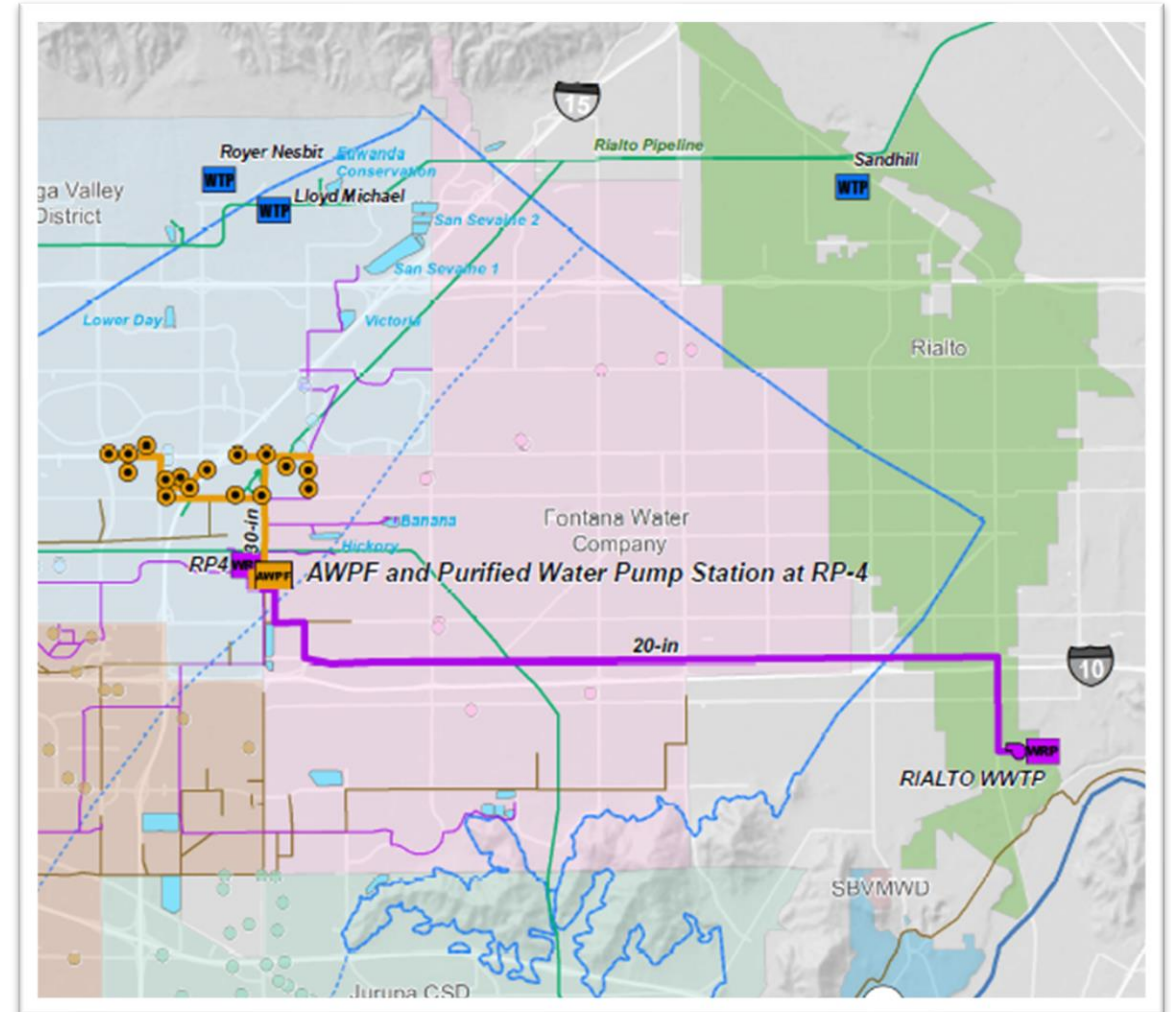


Assumptions

- **Treatment:** Advanced Water Purification Facility is needed to reduce WRCRWA RW TDS of 620 mg/L to meet IEUA’s permit requirements
- **Injection:** Current RW GWR capacity is fully subscribed; injection facilities are needed to store external supplies; AWPf is needed for injection
- **Commodity rate** based on annual debt payments of \$1.1 M per year + O&M costs of \$2.2 M per year

External Water Sources: City of Rialto

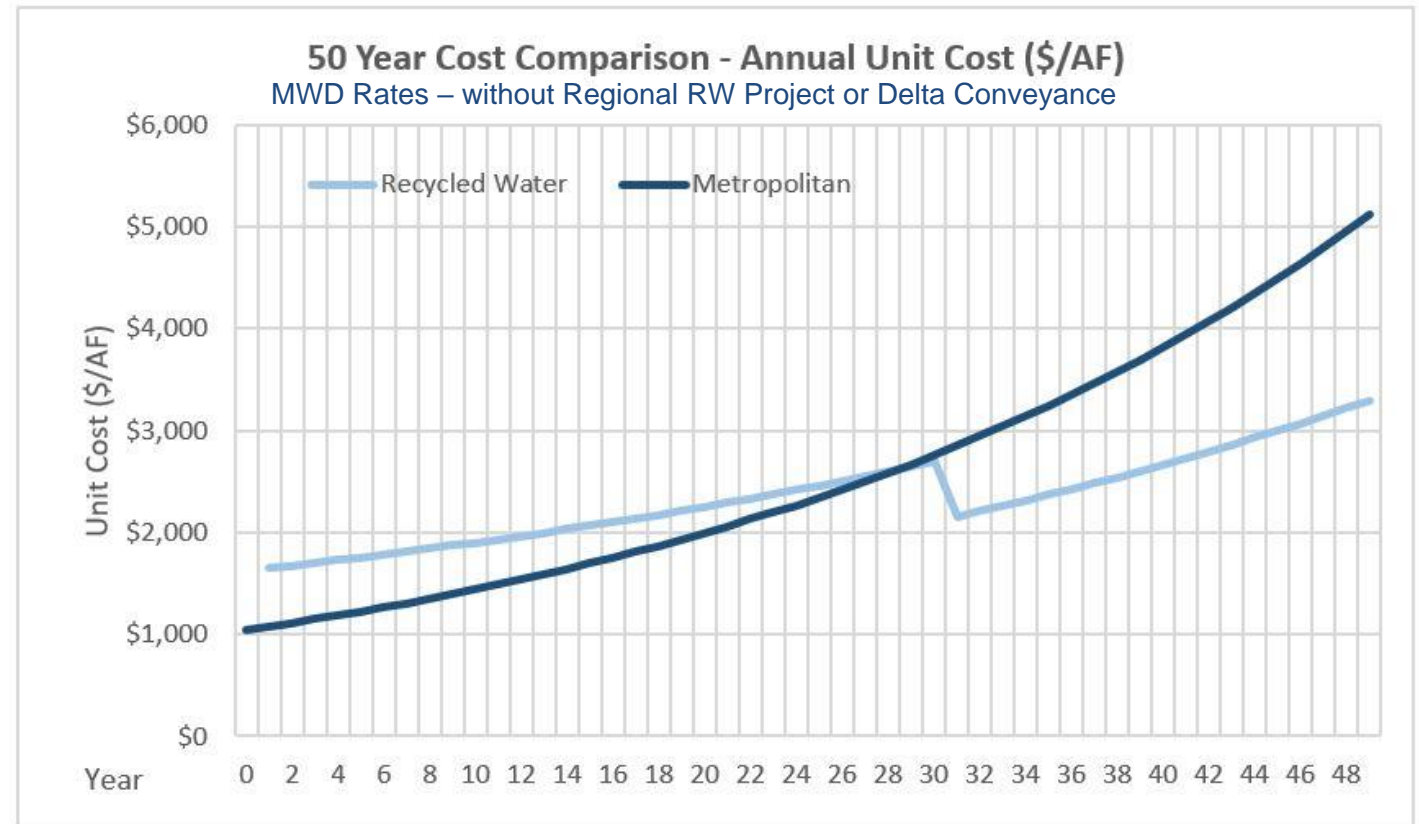
- **Discussions began in 2019**
- **City of Rialto RW supply: 7 TAFY**
 - NPDES Permit TDS Limit: 490 mg/L
 - Project considered under Upper SAR MSHCP
- **Project Components**
 - (1) Pump station + 10 miles of pipeline
 - Capital Cost: \$53M
 - **7 MGD for six months [May to October] | 3,500 AFY**



External Water Sources: City of Rialto

Term [Years]	Proposed Commodity Rate
50	\$275/AF
Optional Purchase option beyond 3,500 AF at \$375 - \$400/AF	

	Rate
MWD "All-In Rate" 2021	~\$1,050/AF
Term Sheet Rate 2021\$	\$1,600/AF
NPV (50 Years)	\$934/AF



Assumptions

- **Treatment:** Advanced Water Purification Facility is needed for injection (not needed for TDS)
- **Injection:** Current RW GWR capacity is fully subscribed; injection facilities are needed to store external supplies
- **Commodity rate** based on annual debt payments of \$2.7 M per year + O&M costs of \$2.4 M per year

Technical Committee Input

- Should IEUA pursue these external supplies now?
- Should IEUA execute the DWR grant in support of the WRCRWA interconnection?
- How should IEUA structure the payment of these external supply projects?

Next Steps

- Technical Committee input on Proposal Terms
- RW Rate Study Workshop – June 2021