



**AGENDA
REGULAR WORKSHOP OF THE
BOARD OF DIRECTORS**

**WEDNESDAY, JANUARY 6, 2021
10:00 A.M.**

**INLAND EMPIRE UTILITIES AGENCY*
VIEW THE MEETING LIVE ONLINE AT IEUA.ORG
TELEPHONE ACCESS: (415) 856-9169 / Conf Code: 932 945 127#**

PURSUANT TO THE PROVISIONS OF EXECUTIVE ORDER N-25-20 ISSUED BY GOVERNOR GAVIN NEWSOM ON MARCH 12, 2020, AND EXECUTIVE ORDER N-29-20 ISSUED BY GOVERNOR GAVIN NEWSOM ON MARCH 17, 2020 AND IN AN EFFORT TO PROTECT PUBLIC HEALTH AND PREVENT THE SPREAD OF COVID-19, THERE WILL NO PUBLIC LOCATION FOR ATTENDING IN PERSON.

The public may participate and provide public comment during the meeting by dialing into the number provided above. Alternatively, you may email your public comments to the Board Secretary/Office Manager Denise Garzaro at dgarzaro@ieua.org no later than 24 hours prior to the scheduled meeting time. Your comments will then be read into the record during the meeting.

CALL TO ORDER OF THE INLAND EMPIRE UTILITIES AGENCY BOARD OF DIRECTORS MEETING

FLAG SALUTE

PUBLIC COMMENT

Members of the public may address the Board on any item that is within the jurisdiction of the Board; however, no action may be taken on any item not appearing on the agenda unless the action is otherwise authorized by Subdivision (b) of Section 54954.2 of the Government Code. Those persons wishing to address the Board on any matter, whether or not it appears on the agenda, are requested to email the Board Secretary no later than 24 hours prior to the scheduled meeting time or address the Board during the public comments section of the meeting. Comments will be limited to three minutes per speaker. Thank you.

ADDITIONS TO THE AGENDA

In accordance with Section 54954.2 of the Government Code (Brown Act), additions to the agenda require two-thirds vote of the legislative body, or, if less than two-thirds of the members are present, a unanimous vote of those members present, that there is a need to take immediate action and that the need for action came to the attention of the local agency subsequent to the agenda being posted.

1. WORKSHOP

A. BIENNIAL BUDGET FYs 2021/22 – 2022/23 OVERVIEW

2. **GENERAL MANAGER'S COMMENTS**

3. **BOARD OF DIRECTORS' REQUESTED FUTURE AGENDA ITEMS**

4. **DIRECTORS' COMMENTS**

ADJOURN

*A Municipal Water District

In compliance with the Americans with Disabilities Act, if you need special assistance to participate in this meeting, please contact the Board Secretary (909) 993-1736, 48 hours prior to the scheduled meeting so that the Agency can make reasonable arrangements.

Declaration of Posting

I, Denise Garzaro, Board Secretary/Office Manager of the Inland Empire Utilities Agency*, A Municipal Water District, hereby certify that a copy of this agenda has been posted by 5:30 p.m. on the Agency's website at www.ieua.org and at the Agency's main office, 6075 Kimball Avenue, Building A, Chino, CA on Thursday, December 31, 2020.



Denise Garzaro, CMC

**WORKSHOP
ITEM**

1A

Biennial Budget FYs 2021/22-2022/23 Overview

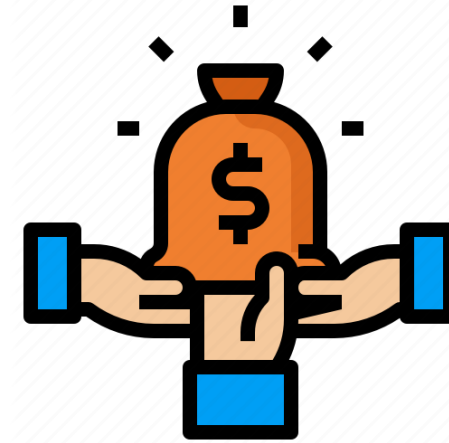


Agenda

- Key Drivers and Principles
- Budget Programs
- Budget Timeline

Legal Document

- Communication tool
- Policy guidelines and priorities
- Financial resources
- Action plan



Budget Supports

PLANNING

- Integrates strategic initiatives to the work plan for the fiscal year
- Identifies revenue and funding sources by program
- Serves as a spending plan for management on how and when funds will be spent

CONTROL

- Establishes the authorization to spend and allocation of resources
- Monitors expenditures and performance throughout the fiscal year

Budget Attributes

Control – Fiscal Control Ordinance 90

- Basic principles of fiscal and budgetary control
- Sets conditions for budget amendments

Management – Reporting and Performance Monitoring

- Monitors funding sources and expenditures
- Periodic reporting of financial and performance outcomes

Alignment - Agency Policy

- Mission, Vision & Values
- IEUA Business Goals and strategic initiatives

Balanced Budget



REVENUES



EXPENDITURES



Biennial Budget

- Transitioned to a biennial (two-year) budget in Fiscal Year 2015/16:
 - Adoption of two "one-year" budgets
 - Appropriation (authorization to spend) limited to a single year
 - Mid-cycle review to identify significant adjustments needed for the second-year budget
- Subject to Annual Appropriation Limit, California Constitution, Article XIIB and California Government Code, Section 7910

Major Programs



Composting (IERCF)

Producing 240,000
cubic yards of
compost annually

Recycles 100% of
Agency biosolids



Wastewater Treatment

Average of
49.2 MGD
treated each year in
four Regional
Recycling Plants



Water Supply

Total water
consumption
FY 2019/20
192,100 AF
Imported water
49,035 AF



Renewable Energy Portfolio

Solar 5.0 MW
Wind 1.0MW
Battery Storage
4.1 MW



Recycled Water Supply & Distribution

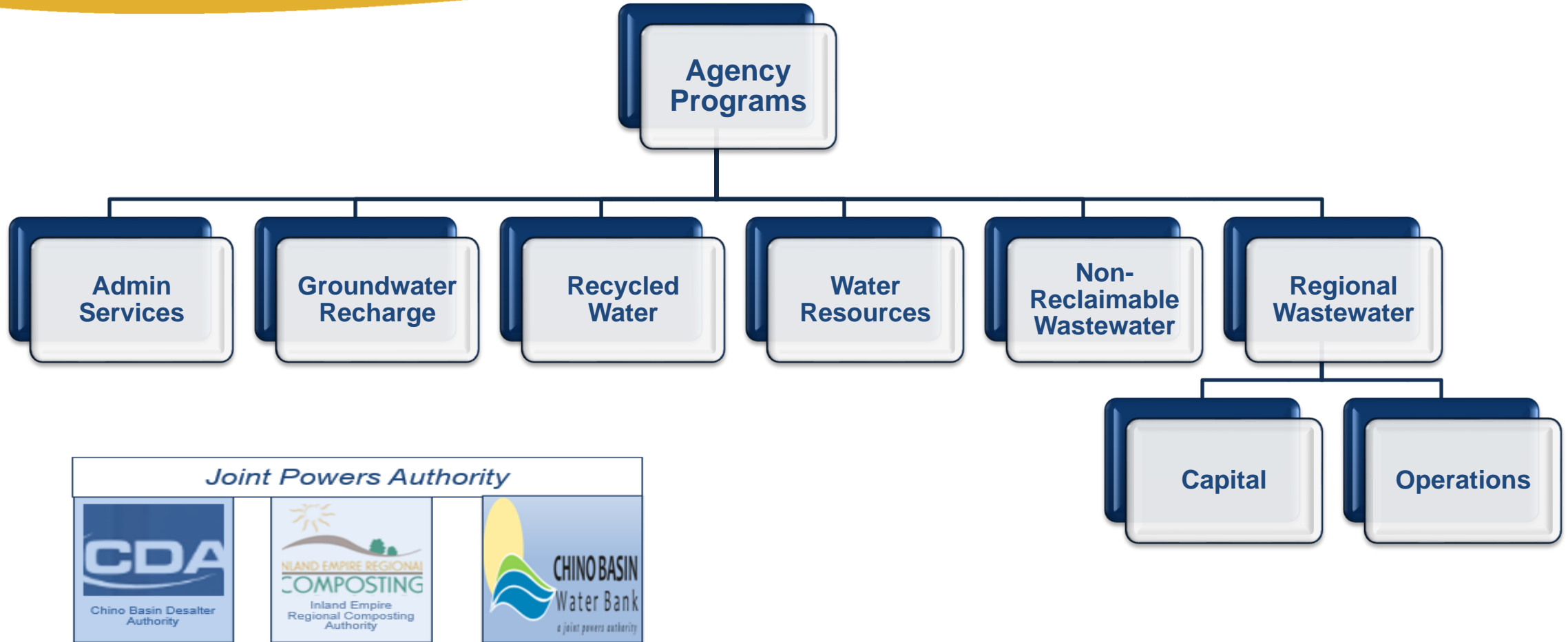
Total deliveries
FY 2019/20
30,495 AF
93 miles of recycled
water pipelines



Groundwater Recharge

19 Recharge sites
Annual recharge
40,000-50,000 AF
Coordination with
Chino Basin
Watermaster
Chino Basin Water
Conservation District
San Bernardino Flood
Control District

Agency Funds



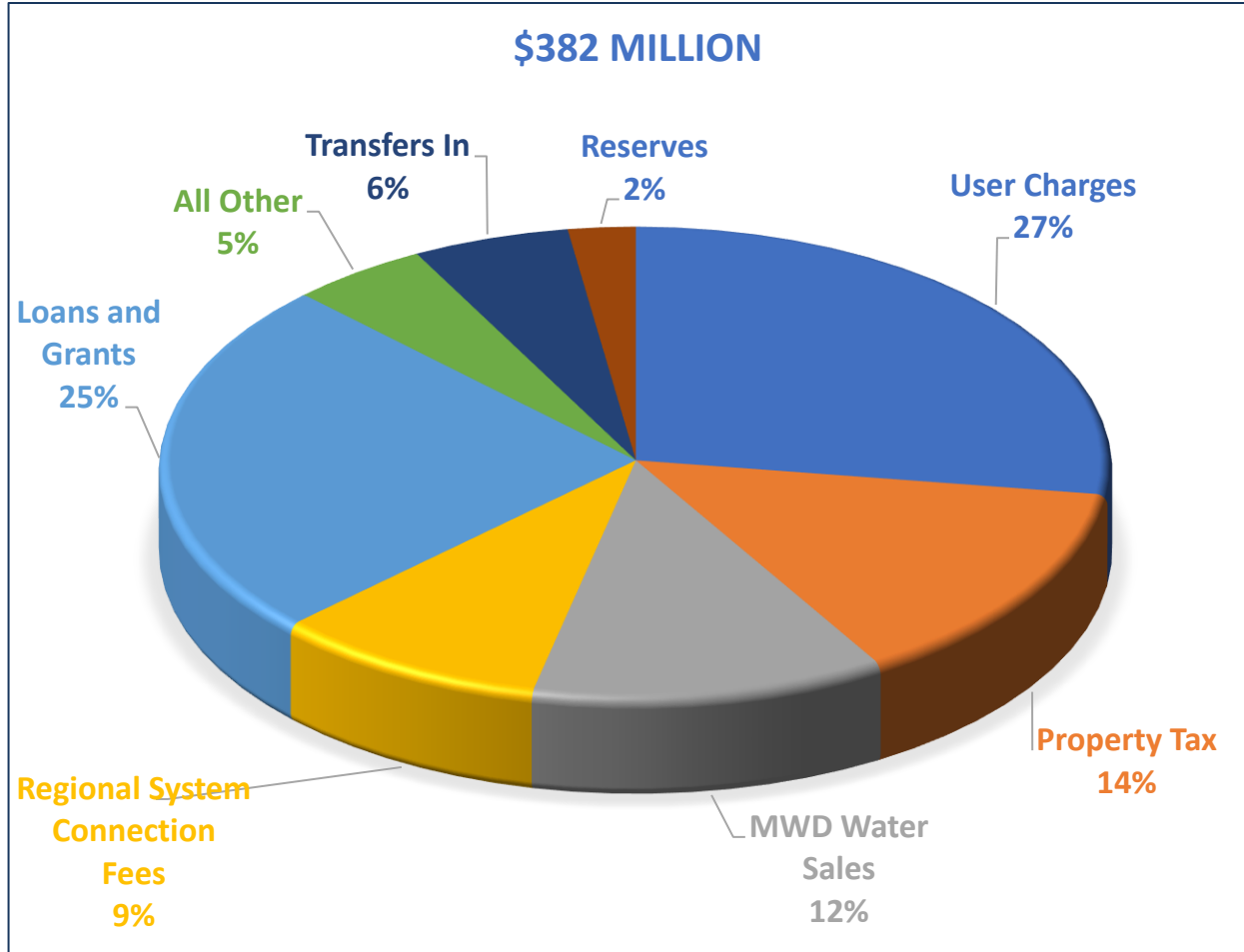
Adopted Rates

Fund	Wastewater Operation	Wastewater Capital	Recycled Water			Water Resources	
As of July 1	Monthly Sewer (EDU)	Wastewater Connection Fee (EDU)	Recycled Water Direct Use (AF)	Recycled Water Recharge (AF)	One Water Connection Fee (MEU)	Meter Equivalent Units (MEU)	RTS Recovery
FY 2020/21	\$20.00	\$6,955	\$490	\$550	\$1,684	\$1.04	75%
FY 2021/22	\$21.22	\$7,379	\$520	\$580	\$1,787	\$1.08	90%
FY 2022/23	To be reviewed based on the sewer use evaluation results		To be determined after additional evaluation to ensure long-term program sustainability		\$1,841	\$1.10	100%
FY 2023/24					\$1,896	\$1.12	100%
FY 2024/25					\$1,953	\$1.14	100%

Not shown are the pass-through rates for the Non-Reclaimable Wastewater (NRW) program.

Total Revenues and Funding Sources

FY 2020/21 Adopted Budget



Major Revenues

27% User Charges

- Monthly Equivalent Dwelling Unit (EDU)
- Non-Reclaimable Wastewater (NRW)
- Meter Equivalent Unit (MEU)

25% Loans

- Capital funding for the regional wastewater program

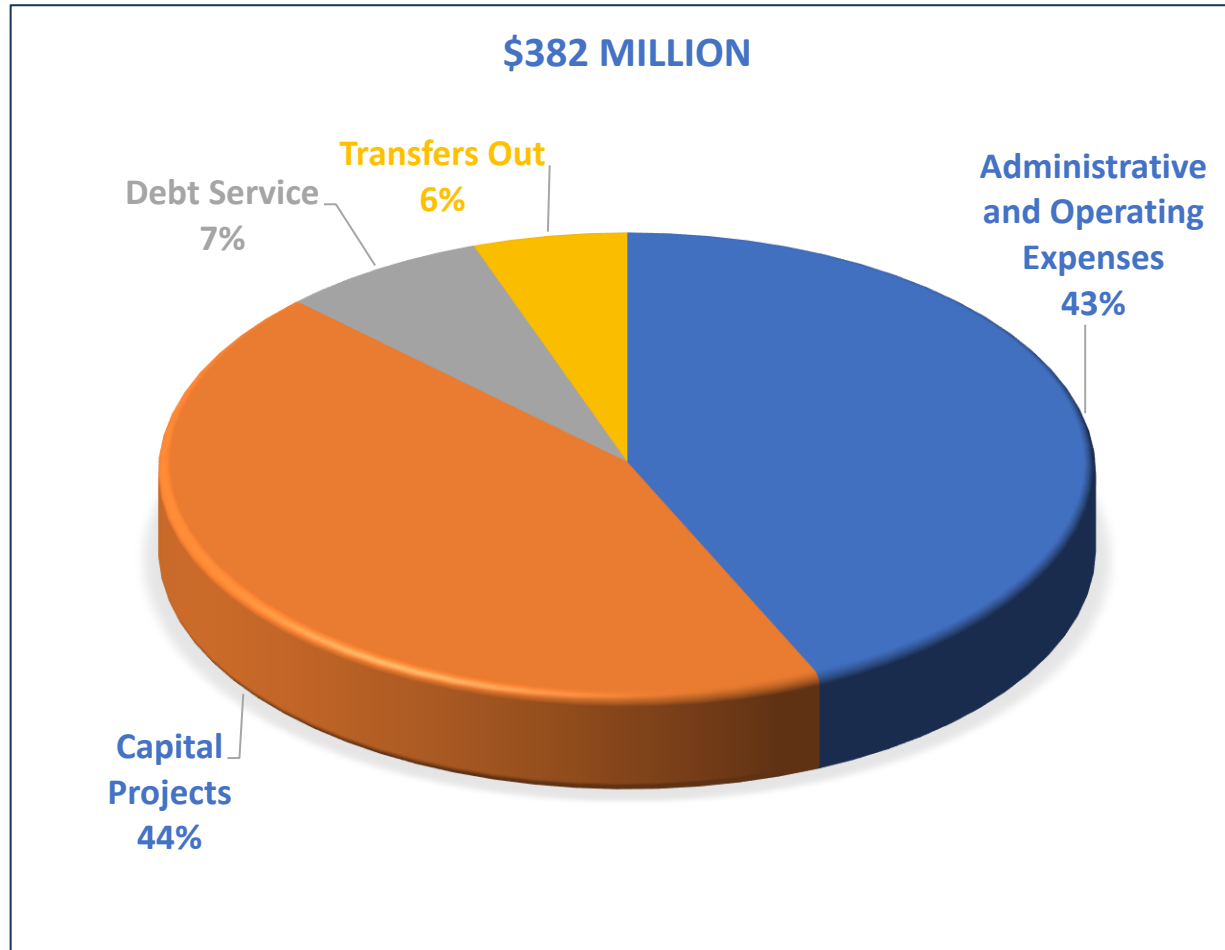
14% Property Tax

- One percent of general assessed property value within the Agency's service area

Total Expenses and Other Uses of Funds

FY 2020/21 Adopted Budget

Major Expenses



43%
**Admin. and
Operating
Expenses**

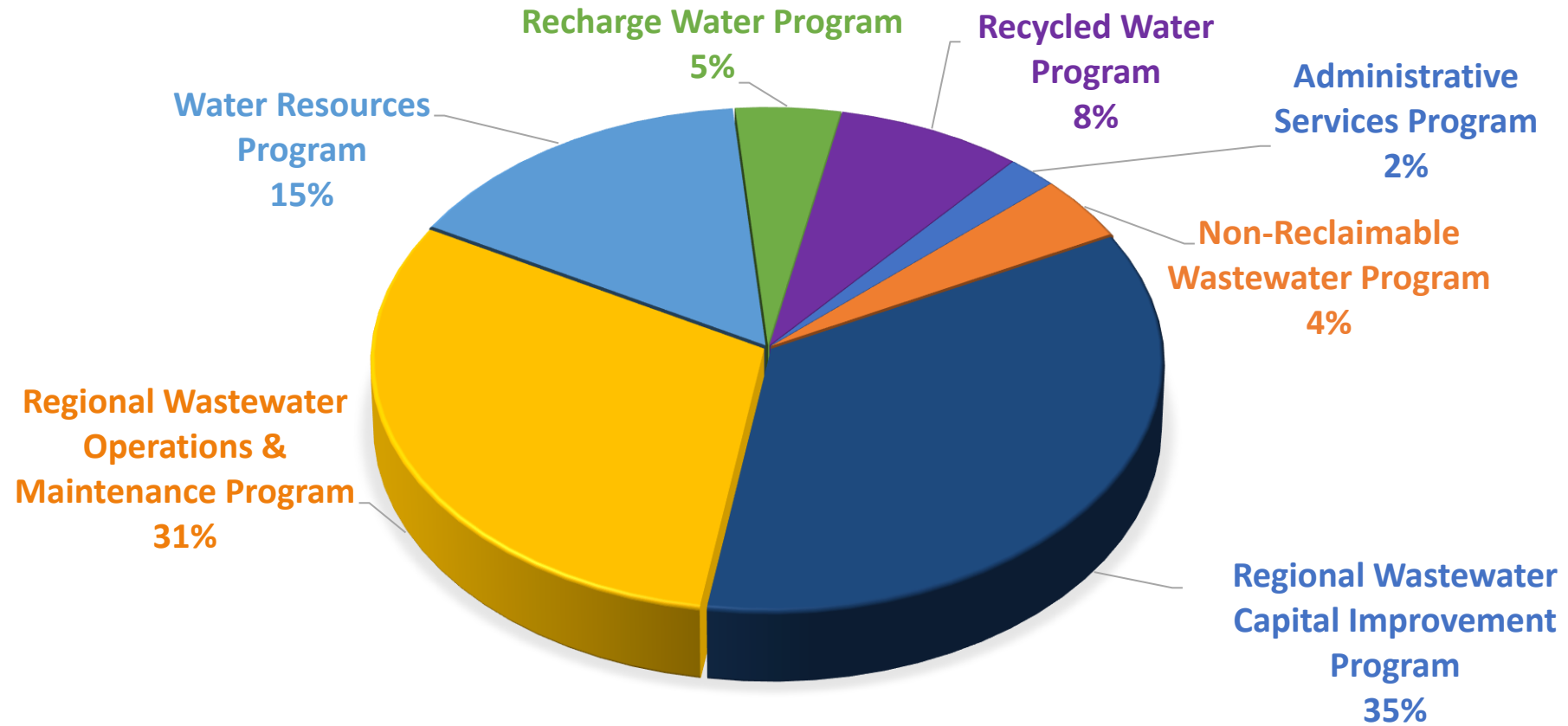
- Labor Costs
- Office Administration
- Professional Fees
- Utilities
- Non-Capital Projects

44%
**Capital
Projects**

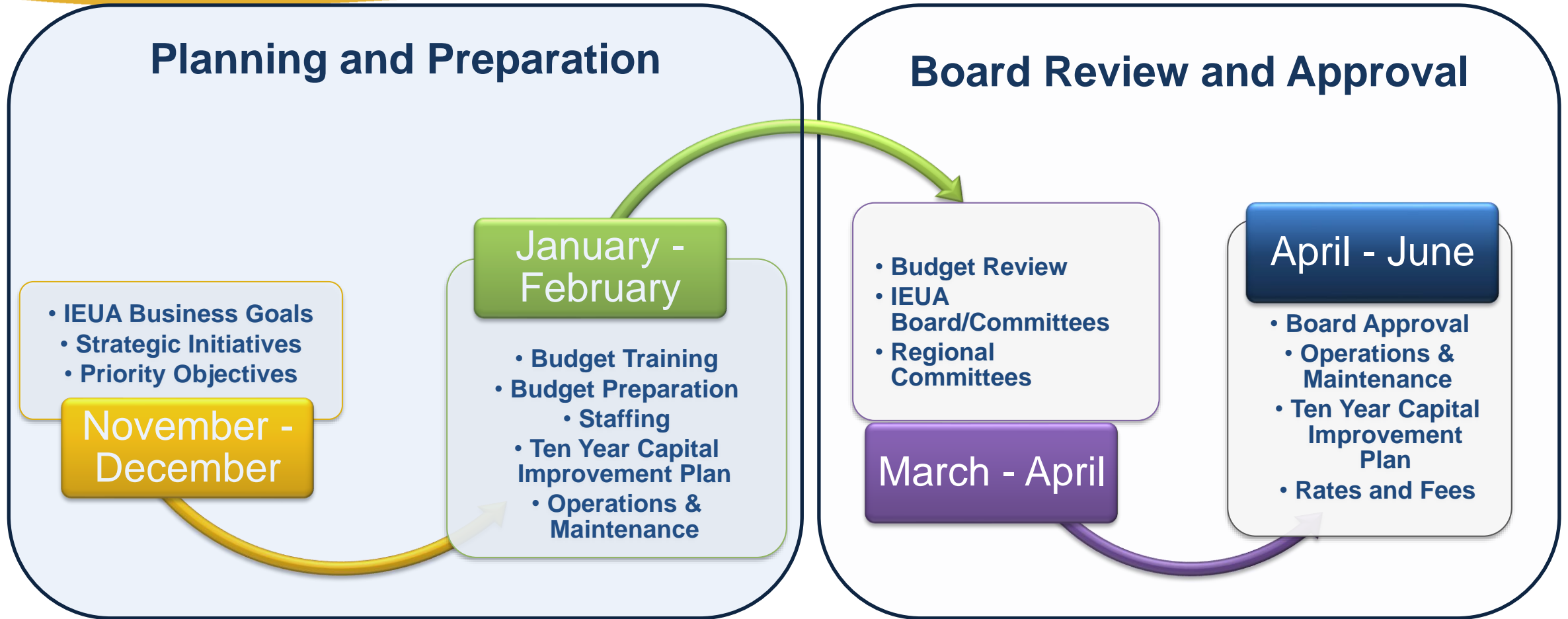
- RP-5 Expansion
- RP-4 Process Improvements
- Recharge Master Plan Update

Total Expenses by Program Funds

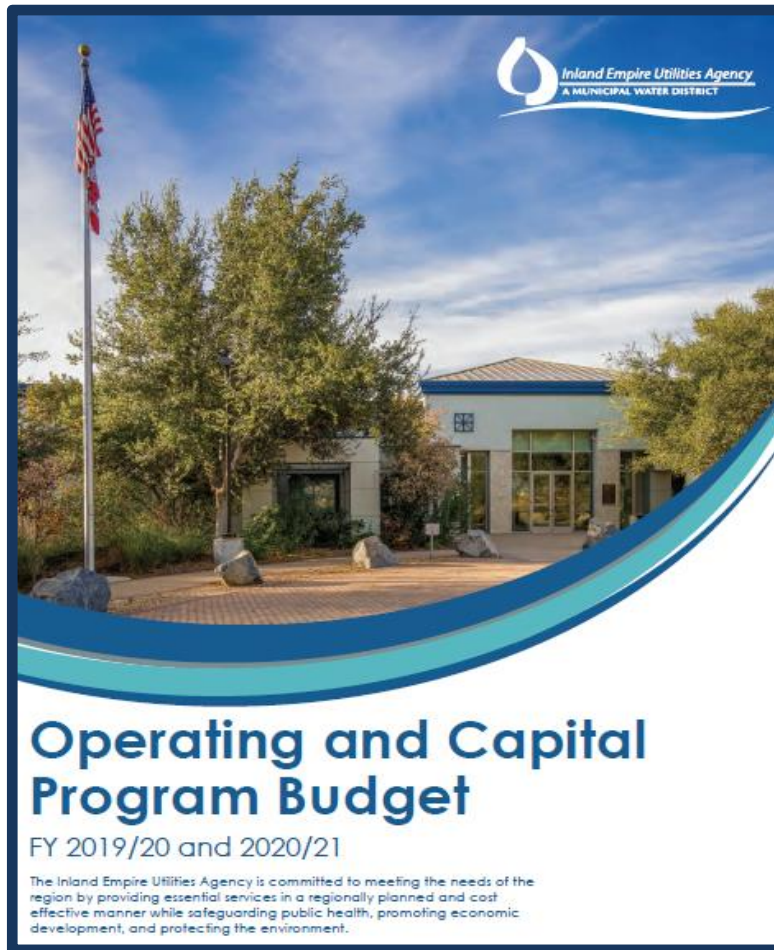
FY 2020/21 Adopted Budget



Budget Timeline



Agency Budget



Financial Reports
Can Be
Found at
<https://www.ieua.org>

»» TABLE OF CONTENTS	
Board of Directors	iv
Executive Staff	iv
GFOA Award	v
Budget Message/Executive Summary	
Budget Message	1-1
Executive Summary	1-3
Agency Profile/Policy Goals	
Agency Profile	2-1
Local Economic Conditions and Outlook	2-7
Mission, Vision, Values, and Goals	2-13
Budget Priorities	2-21
Financial Policies	2-23
Budget Process	
Strategic Planning	3-1
Budget Preparation Process and Timeline	3-2
Executive Management Responsibilities	3-3
Department Responsibilities	3-3
Budget Preparation Training	3-4
Balanced Budget	3-4
Budgetary Control	3-4
Budget Variance Monitoring and Reporting	3-5
Financial Policies	3-5
Budget Basis	3-6
Revenues	
Revenues and Other Funding Sources	4-1
EDU Service Charges	4-3
NRW User Charges	4-5
Meter Equivalent and RTS Cost Recovery Charges	4-6
Property Tax Receipts	4-6
Regional Wastewater System Connection Fees	4-9
Water Connection Fee	4-10
Recycled Water Sales	4-11
State Loans	4-12
Grant Revenues	4-13
Inter-Fund Loans	4-15
Total Revenues and Other Funding Sources	4-16

Budget Continuous Process



Questions



The Agency's biennial budget is consistent with the IEUA Business Goals of:
Fiscal Responsibility, Water Reliability, Wastewater Management, Environmental Stewardship, and Business Practices.