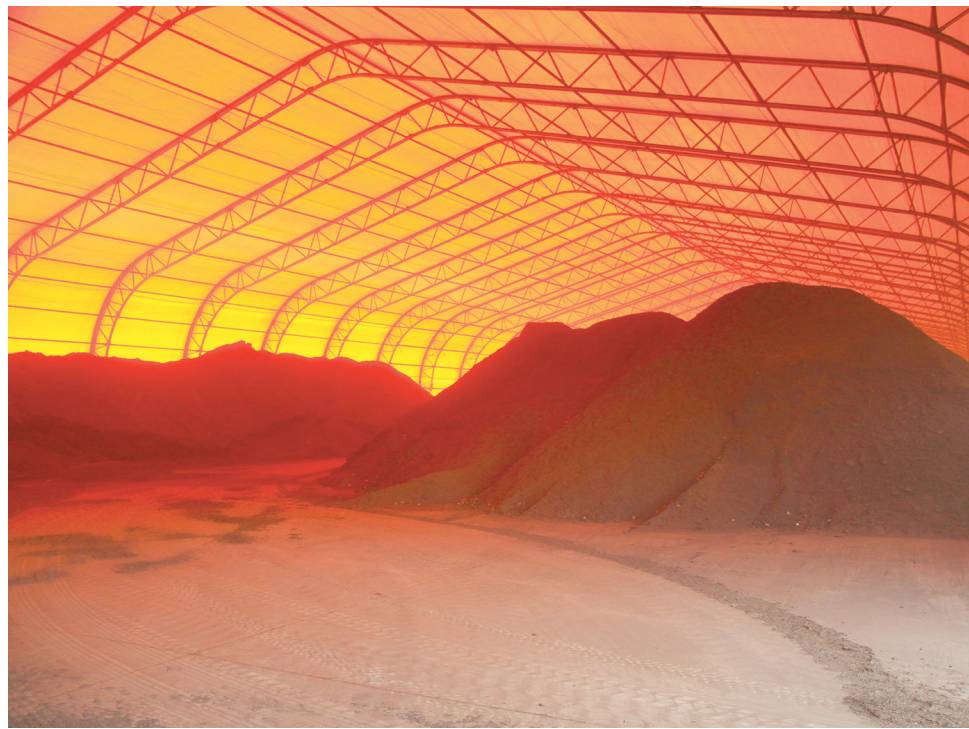




SECURING RESOURCES

INLAND EMPIRE
UTILITIES AGENCY
2017
ANNUAL
REPORT
FISCAL YEAR 2016-2017



LEADING BY EXAMPLE

message from the general manager

The Inland Empire Utilities Agency (IEUA/Agency) continues to lead the way for innovation, resource management and stewardship. We exemplify the utility mission of maintaining quality resources while mutually promoting environmental awareness. In a world in which water supply is never guaranteed, IEUA makes sustainability, drought resiliency and water resource management top priorities.



IEUA is a leading agency in southern California for water-use efficiency, renewable energy, resource management, and public awareness. Transforming from solely a supplemental water provider to also providing wastewater treatment, developing renewable energy and providing compost, IEUA has expanded its reach to be a fundamental asset in environmental stewardship for the region.

The Agency continues to serve a resource leadership role and recognizes the region's needs while also taking population growth into account. IEUA's service area, located in the Inland Empire, is one of the fastest growing regions in the United States. The Agency's service area population is projected to surpass 875,000 this year. As current growth trends move upward, IEUA's Board of Directors and management team recognize the need to develop new local water supplies to offset the need for additional imported water, to reduce potential drought impacts and to lower its net energy use. For a sustainable future, we continue to search for and implement innovative solutions.

IEUA provides leadership in resource management and promotes environmental stewardship by committing to goals, which meet the needs of our stakeholders and maintain the value of service provided to the community. The Agency's goals focus on areas; such as, fiscal responsibility, water reliability and environmental stewardship. The objectives established within each goal provide a road map for the Agency to ensure that we provide the best possible service to our partnering agencies and the community.

We look forward to the future and will continue to establish and maintain planning efforts and initiatives that reflect our commitment to deliver high-quality, reliable services to customers in a regional, cost-effective manner.

Halla Razak, *General Manager*



mission

Inland Empire Utilities Agency is committed to meeting the needs of the region by providing essential services in a regionally planned and cost-effective manner while safeguarding public health, promoting economic development and protecting the environment.

Key areas of service:

- Securing and supplying imported water.
- Collecting and treating wastewater.
- Producing high-quality renewable products such as recycled water, compost and energy.
- Promoting sustainable use of groundwater and development of local water supplies.

vision

To become a world class leader in water management and environmental stewardship, including water quality, water-use efficiency, recycled water, and renewable energy, in order to enhance and preserve the quality of life throughout the region.

values

Leading the way. Planning for the future. Protecting the resources of the communities we serve. The Inland Empire Utilities Agency is:

- Committed to applying ethical, fiscally responsible, transparent, and environmentally sustainable principles to all aspects of business and organizational conduct.
- Working with integrity as one team, while celebrating the region's diversity.
- Staying in the forefront of the industry through education, innovation, efficiency, and creativity.



who we are

The Inland Empire Utilities Agency is located in western San Bernardino County and serves approximately 875,000 residents in a 242-square mile service area.

As a regional wastewater treatment agency, the Agency provides sewage utility services to seven contracting agencies under the Chino Basin Regional Sewage Service Contract: the cities of Chino, Chino Hills, Fontana, Montclair, Ontario, Upland, and Cucamonga Valley Water District (CVWD) in the city of Rancho Cucamonga.

In addition to the contracting agencies, the Agency provides wholesale imported water from the Metropolitan Water District of Southern California to seven retail agencies: the cities of Chino, Chino Hills, Ontario, Upland, CVWD in the city of Rancho Cucamonga, Fontana Water Company in the city of Fontana, and the Monte Vista Water District in the city of Montclair.

board of directors

STEVEN J. ELIE – President

Representing Division 3
Cities of Chino and Chino Hills.

MICHAEL CAMACHO – Vice President

Representing Division 5
City of Rancho Cucamonga, a small portion of Fontana and a portion of the unincorporated territories in Fontana's sphere of influence.

JASMIN A. HALL – Secretary/Treasurer

Representing Division 4
City of Fontana, and portions of Rialto and Bloomington.

KATI PARKER – Director

Representing Division 1
Cities of Upland and Montclair, the unincorporated area of San Antonio Heights and portions of Ontario and Rancho Cucamonga.

PAUL HOFER – Director

Representing Division 2
City of Ontario, the unincorporated Agricultural Preserve and a portion of the unincorporated territories in the city of Fontana's sphere of influence.

executive team

HALLA RAZAK

General Manager

CHRIS BERCH

Executive Manager of Engineering/
Assistant General Manager

KATHY BESSER

Executive Manager of External Affairs
and Policy Development/
Assistant General Manager

RANDY LEE

Executive Manager of Operations/
Assistant General Manager

CHRISTINA VALENCIA

Executive Manager of Finance and Administration/
Assistant General Manager

JEAN CIHIGOYENETCHE

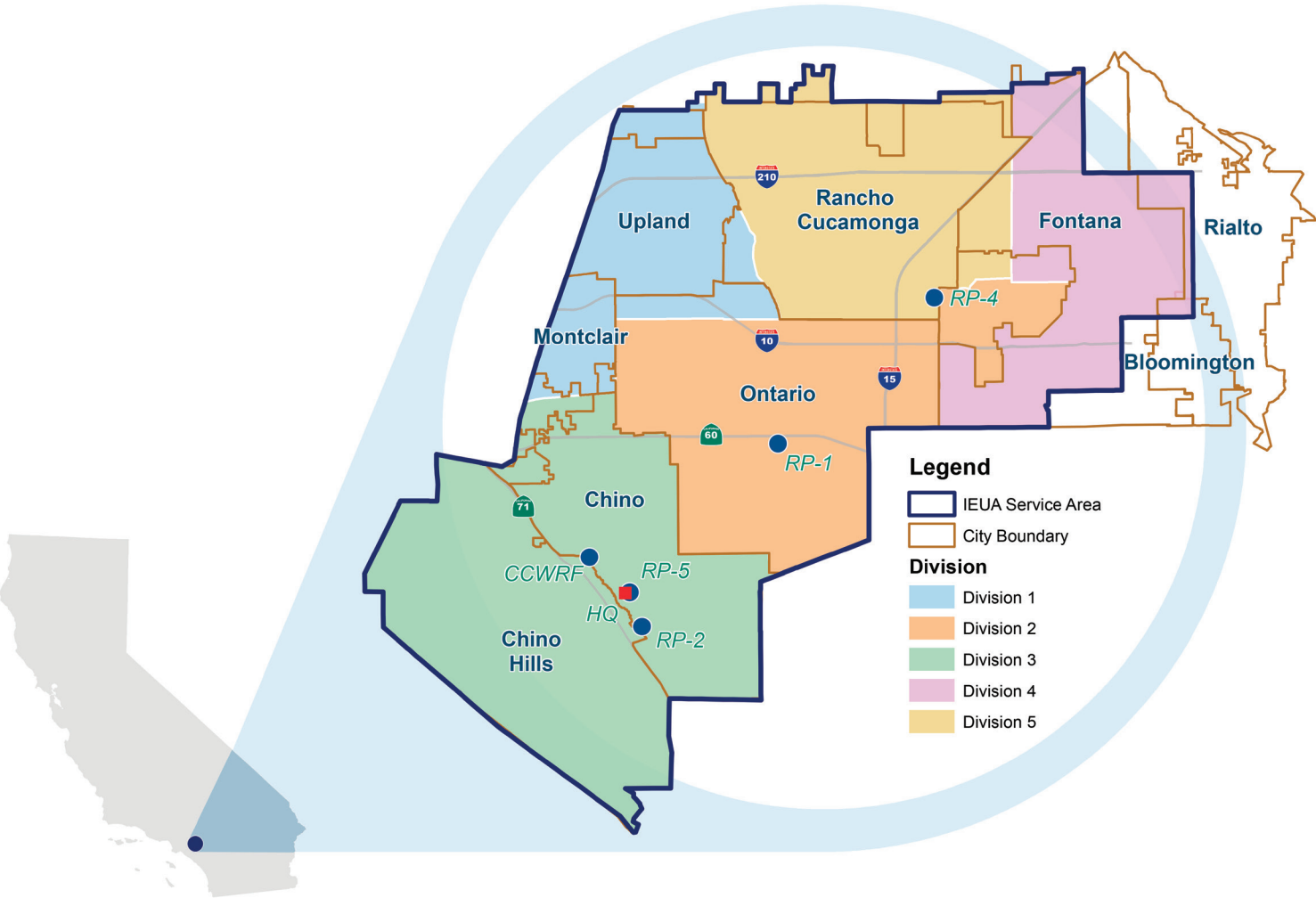
General Counsel





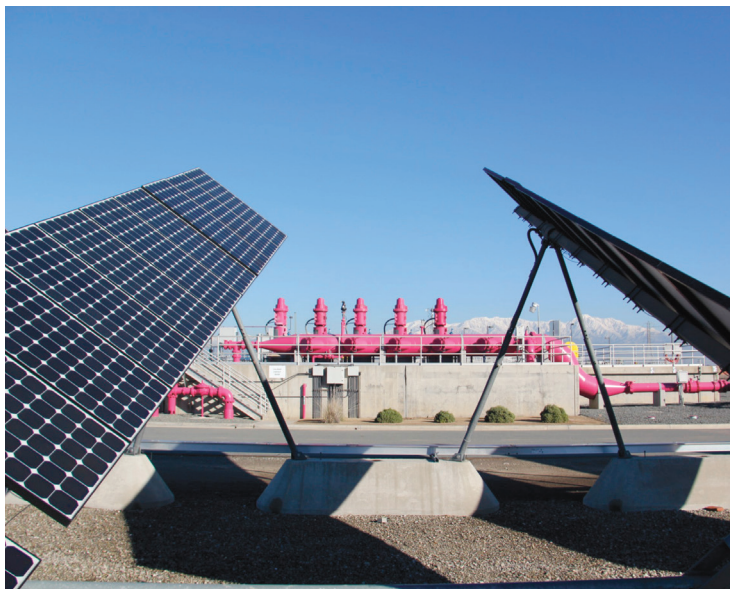
service area

IEUA is responsible for serving approximately 875,000 residents over 242-square miles in western San Bernardino County.



securing resources and leading by example

The Agency is committed to securing a reliable water supply and leading the region in environmental stewardship initiatives. The framework that guides this commitment is the Agency's business goals. These goals guide the decisions and actions IEUA takes in executing the Agency's mission, while maintaining its values.



BUSINESS PRACTICES

The Agency is committed to applying ethical, fiscally responsible and environmentally sustainable principles to all aspects of business and organizational conduct.

ENVIRONMENTAL STEWARDSHIP

The Agency is committed to the responsible use and protection of the environment through conservation and sustainable practices.





WATER RELIABILITY

The Agency is committed to developing and implementing an integrated water resource management plan that promotes cost-effective, reliable, efficient, and sustainable water use along with economic growth within the Agency's service area.

WASTEWATER MANAGEMENT

The Agency will develop master plans for Agency systems and manage and construct these systems to ensure that when expansion planning is triggered, designs and construction can be completed to meet regulatory and growth needs in an expeditious, environmentally responsible and cost-effective manner.



FISCAL RESPONSIBILITY

The Agency will safeguard its fiscal health through organizational efficiency and the adoption of balanced multiyear budgets and rates. The Agency will provide open and transparent communication to educate partner agencies on IEUA's fiscal policies.



WORKPLACE ENVIRONMENT

The Agency is committed to providing a positive workplace environment by recruiting, retaining and developing a highly skilled team dedicated to IEUA's mission, vision and values.

supplemental water provider

The Agency is a member of the Metropolitan Water District of Southern California (MWD) and thus acts as the supplemental water provider for western San Bernardino County. Approximately 30 percent of the water used in the region is imported from MWD through the State Water Project.

Since 2009, imported water deliveries from northern California declined from a high of 78,872 acre-feet (AF) to 31,722 AF in 2016. Continual water-use decline can be attributed to residents' conservation practices during the most recent drought that spanned water years 2012 through 2016, and included the driest four-year statewide precipitation on record. In April 2017, Governor Brown declared the drought emergency over and with restrictions lifted, many areas throughout California experienced varying levels of water-use rebound. Within the IEUA region, a 9% increase occurred during FY 2016/17, representing a rise in demand by 15,261 AF from FY 2015/16. While the area experienced a small rebound, the region continues to remain approximately 20% below FY 2013/14 water use.

Total FY 2016/17 water consumption was 184,060 AF.

Aggressive efforts have been made to diversify and maximize local resource development and expand water-use efficiency programs. These efforts aim to prepare the service area for future dry years and increase regional resiliency in the face of climate change.



WATER RELIABILITY



chino desalters

The Chino Basin Desalter Authority (CDA) was formed under a Joint Exercise of Powers Agreement on September 25, 2001, by local agencies, including: cities of Chino, Chino Hills, Norco, Ontario, Inland Empire Utilities Agency, Jurupa Community Services District, Santa Ana River Water Company, and Western Municipal Water District (formally admitted on April 2, 2009).

The CDA purifies brackish groundwater extracted from the lower Chino Basin with the Chino I and II Desalter facilities and distributes the drinking water to its member agencies. The Chino I and II Desalters serve the dual purpose of providing a reliable water supply and managing groundwater quantity and quality in the region.

wastewater treatment

IEUA owns and operates four facilities specializing in regional water recycling services. The Agency's water recycling plants collectively take in approximately 50 million gallons of wastewater per day for treatment. Several treatment processes contribute to providing high quality recycled water pursuant to California's Title 22 regulations.

Major Treatment Processes:

- **Preliminary Treatment** – Wastewater flows through bar screens and grit chambers, where large and more dense materials such as sand, dirt, stones and rags are removed.
- **Primary Treatment** – As wastewater goes through sedimentation tanks, approximately 65% of the suspended solids are removed.
- **Secondary Treatment** – This is the biological process in which the organic material is removed by microorganisms. This process reduces an excess of 90% of the organic material in the wastewater.
- **Tertiary Treatment** – Water is passed through filtration to remove suspended organic solids, and it is disinfected using sodium hypochlorite (bleach).

FACT

Super Bowl Sunday is the highest flow day for IEUA's wastewater treatment plants. The second highest flow day is Thanksgiving.



recycled water

IEUA began selling recycled water in the 1970s as a low cost alternative to potable water for large irrigation customers. Since 2000, IEUA and its local water providers have invested in a program to expand delivery of high quality recycled water thus improving sustainability of the region's water supply. To date, IEUA has more than 1,100 connections to the recycled water distribution system.

Recognizing the critical role of recycled water in the long-term water security plan of the Chino Basin, IEUA adopted a policy and entered into agreements with its contracting member agencies to maximize the use of recycled water.

IEUA is committed to the development of its recycled water infrastructure so that all recycled water produced through its wastewater treatment activities can be beneficially used.

Recycled water uses include: irrigation, landscaping, golf courses, industrial cooling, parks, recreational lakes, groundwater recharge, median strips, and more.

As demand for potable water increases, the future availability of potable water for irrigation is questionable. Utilizing recycled water for irrigation and other purposes is making use of a valuable resource that would otherwise be disposed of.

During FY 2016/17, the average recycled water supply from IEUA's facilities was approximately 47.8 million gallons per day (MGD), or 53,480 acre-feet per year (AFY).

Total recycled water demands during FY 2016/17 were 33,411 AF.





groundwater recharge

The Inland Empire Utilities Agency, Chino Basin Watermaster, Chino Basin Water Conservation District, and the San Bernardino County Flood Control District jointly sponsor the Chino Basin Recycled Water Groundwater Recharge Program. This program was put in place to enhance water supply reliability and to improve drinking water quality throughout the greater Chino Basin.

As part of the recycled water expansion, IEUA has enhanced the capabilities of the Groundwater Recharge Program to help replenish the area's underground aquifers. These recharge sites enhance the reliability of the local groundwater supply for a growing population. Located throughout IEUA's service area are 19 recharge sites designed to capture runoff from storms, imported water from the State Water Project and high quality recycled water from IEUA's distribution system.

Recycled water recharge in FY 2016/17 was the highest volume recharged in the history of the program. IEUA recharged 11,574 AF of stormwater/local runoff, 12,129 AF of imported water, and 13,934 AF of recycled water.

Recycled water groundwater recharge usage was 13,934 AFY and recycled water direct usage was 19,477 AFY.

composting and biosolids management

In 2002, IEUA developed a partnership with the Los Angeles County Sanitation Districts to create the Inland Empire Regional Composting Authority (IERCA). **The IERCA determined that recycling biosolids into a high quality compost product, in a fully enclosed, local facility, was the best approach to overcoming the challenges of biosolids management.**

The Inland Empire Regional Composting Facility (IERCF), located in Rancho Cucamonga, is the nation's largest fully enclosed composting facility and has been operating since 2007. This created an additional market to collect local "green waste," recycled wood and yard trimmings needed for the composting process. **The IERCF produced more than one million tons of high-quality compost for the year.**

For FY 2016/17, the IERCF operated at 96% of its permitted capacity, processing 198,506 tons of recycled materials which includes all of the biosolids produced at IEUA. The composted materials produced 251,700 cubic yards of STA Certified Compost sold as SoilPro Premium Compost. **The compost is sold to landscapers and farmers throughout southern California.**

IERCF CELEBRATES 10 YEARS:

Over the past 10 years, the Inland Empire Regional Composting Facility has cost-effectively provided and manufactured an exceptional quality compost in compliance with all local, state and federal regulations covering biosolid products.

IERCF operated with a perfect compliance record and has over five years without a lost time incident.





energy optimization

IEUA is committed to optimizing facility energy use and effectively managing renewable resources to achieve peak power independence and contain future energy costs.

IEUA continues to be recognized for leadership in technology and water management – tackling the water-energy nexus takes the Agency’s leadership role to a completely different level. Over a decade ago, the IEUA Board made the decision to invest in renewable generation technology with the goal of reducing greenhouse gas emissions and moving its facilities off the electrical grid during peak power needs by 2020.

Renewable Energy Portfolio

IEUA’s renewable portfolio was strategically developed by identifying how available resources, such as wastewater treatment infrastructure and available land, could be applied to incorporate environmentally friendly technologies capable of producing power at a rate comparable to grid import pricing. IEUA successfully incorporated solar, wind, fuel cell, and food waste technologies into its facilities while expending little to no capital and reducing its demand on the grid.

Energy storage is key to maximizing the value of resource investments, allowing the Agency to use resources more efficiently, reduce costs for customers and participate in building a more resilient grid for the entire region.



PORTFOLIO: Megawatt (MW)

Currently installed.

SOLAR POWER: 3.5 MW

WIND POWER: 1.0 MW

FUEL CELL: 2.8 MW

FOOD WASTE

DIGESTION: 3.0 MW

BATTERY

STORAGE: 0.5 MW

In order to move closer to the goal of peak power independence by 2020, IEUA's renewable portfolio is expected to grow with additional solar and batteries. This would allow IEUA to be able to operate completely off the grid during peak energy usage periods.

Portfolio History:

IEUA entered into a Power Purchase Agreement (PPA) with a private company and had 3.5 MW of solar power installed at four of IEUA's facilities. Since installation at the end of 2008, IEUA has consumed approximately 55,750 megawatt hours (MWh) of power generated from the solar panels.

In 2010, IEUA expanded its renewable energy portfolio by securing another PPA for a 1.0 MW wind turbine at Regional Water Recycling Plant No. 4 in Rancho Cucamonga and a separate PPA for a 2.8 MW fuel cell system located at Regional Water Recycling Plant No. 1 in the city of Ontario. The wind turbine was commissioned in early 2012 and has generated approximately 2,150 MWh since startup. The fuel cell system has generated approximately 48,648 MWh since operation began in 2013.

Again in 2010, IEUA entered into a PPA with an environmental engineering consulting firm to develop the RP-5 Solids Handling Facility food waste digestion site. The facility, initially designed as a manure digestion site, has been diverting regional food waste since 2012, and generating power since 2015. The goal is to produce enough digester gas to fuel two internal combustion engines capable of generating 1.5 MW each.

IEUA partnered with an energy firm to install 4.0 MW of advanced energy storage systems at Agency facilities and pump stations. The storage systems optimize IEUA's on-site generation including solar, wind and biogas resources. The batteries store excess renewable energy and use stored energy to power facilities when demand on the electric grid is high. The energy storage systems also provide an added layer of protection against outages and enhance the Agency's ability to share the benefits of renewable resources between facilities.

The Agency's Energy Optimization programs generated 16% of the electricity consumed from renewable energy resulting in \$370,000 in savings for the fiscal year. Savings to date since 2008 are approximately \$895,000.



The renewable energy generated by IEUA would be able to provide electricity to at least 1,100 homes.

community outreach and education

IEUA is committed to environmental stewardship and as part of that commitment, the Agency offers educational resources and takes part in community outreach. These activities focus on water supply, renewable resources and environmental sustainability.

IEUA invests in our future generations and provides a range of programs offered to kindergarten through twelfth grade students. These programs include: Water Discovery field trips to the Chino Creek Wetlands and Educational Park, *Water is Life* poster contest, Garden in Every School® program, National Theatre for Children, Solar Cup competition, and more.



Water Discovery Field Trip: IEUA continues to provide free educational field trips to schools throughout the service area and the State at the Chino Creek Wetlands and Educational Park to promote the value of natural treatment wetlands, the creation of habitat for endangered/ sensitive species and environmental stewardship. A busing mini-grant is offered to schools within the state of California to take part in the field trip program, partially funded by the California Department of Parks and Recreation. During FY 2016/17, 3,984 Girl Scout troop members, elementary and high school students took part in the Water Discovery field trip.



Garden in Every School® Program: The goal of the program is to educate students and the community about water-wise usage through a garden landscape featuring low water-use plants and efficient irrigation. During FY 2016/17, IEUA awarded grants to four schools within the service area for the establishment of a water-wise garden reaching a total of 4,896 students: Arroyo Elementary School (Ontario), Montclair High School (Montclair), Rolling Ridge Elementary School (Chino Hills), and Townsend Junior High School (Chino Hills).

National Theatre for Children: The National Theatre for Children Program (NTC) delivers a behavior-driven, multiplatform, in-school water education curriculum for students and teachers in grade levels K-6. A package of live theatre, student curriculum and teacher guides focus on messaging utilizing a custom-designed program covering uses of water, importance of water, ways to conserve, and ways water gets polluted. Over the last year, NTC visited 51 elementary schools throughout the IEUA service area, and conducted 92 shows reaching 22,772 students and 958 teachers.

Shows That Teach (STT): STT "H₂O, Where Did You Go?" is a fun K-6 appropriate, theatrical-style production, which teaches students about water science, the value of water and the importance of conservation. Over the last year, STT conducted 36 performances to elementary schools in IEUA's service area.

The Chino Creek Wetlands and Educational Park is partially funded by a grant from the State Water Resources Control Board.

BUSINESS PRACTICES

WATER RELIABILITY

ENVIRONMENTAL STEWARDSHIP

Solar Cup: The Solar Cup competition is an eight-month program in which high school students throughout southern California build a solar-powered boat and participate in technical inspections, submissions of technical reports and create a public service announcement focusing on water conservation. This past year, four schools participated from IEUA's service area: Chino Hills High School (Chino Hills), Chino High School (Chino), Los Osos High School (Rancho Cucamonga), and Kaiser High School (Fontana).



9th Annual Earth Day Event

IEUA partnered with the city of Chino to co-host a two-day Earth Day Event on April 19 and 20, at the Chino Creek Wetlands and Educational Park. The Earth Day celebration provided Water Discovery field trips to approximately 2,000 students, parents and teachers on April 19th and hosted over 1,800 community members on April 20th during Community Day.

The event promotes environmental awareness to the community and provides ways for the community to take action and support environmental stewardship. It includes environmental exhibits, free giveaways, hands-on earth-friendly activities, environmental show performances, and more.



IEUA continues to promote the *Kick the Habit* campaign focused on kicking the water-wasting habit. The goal of the campaign is to increase awareness about the value of water, communicate the message of water-use efficiency and promote long-term changes in water use habits that will help to ensure the sustainability of the region's water supply. **Check out KickWaterWaste.com for more information.**



Kick the Habit
don't waste water



WARNING: Failure to reduce water use will impact future generations

KickWaterWaste.com



water-use efficiency

Water-use efficiency and conservation are key fundamentals of the Agency's long-term water resource management strategy.

IEUA has established water-use efficiency (WUE) goals and to achieve them, the Agency offers a suite of WUE programs that are designed to positively impact individual long-term behavior regarding efficient water use. Over the last fiscal year, there were approximately 24,170 water saving technologies/services deployed throughout the service area.

These include:

- Residential and Commercial Turf Removal
- Landscape Installation and Retrofit Programs
- Freesprinklernozzles.com Voucher Program
- Landscape Evaluations and Consultations
- Residential Pressure Regulation Program
- Residential and Commercial Rebates
- Technology-Based Software Program
- Regional Member Agency Aerial Mapping Program
- Funding Support for Member Agency Locally Implemented Programs
- Funding Support for Development of Sustainable Water Rate Structures

The water savings achieved through these regional WUE activities is approximately 427 AFY, with an estimated lifetime savings of 4,676 AF. This new water savings is in addition to IEUA's cumulative lifetime water savings of 138,613 AF for all WUE activities since 1992.



FACT } *One acre-foot is enough water to provide to two families of four for an entire year.*

Sustained reduction in water use, as mandated by state legislation, will be met through IEUA's member agency regional partnership and IEUA's continued commitment to implement innovative WUE programs that create market transformations. Many of these programs have been made possible through funding partnerships with local agencies, including the Metropolitan Water District of Southern California, the Department of Water Resources, the U.S. Bureau of Reclamation, and public/private partnerships.

IEUA in numbers

9,465
Rebates

issued in FY 2016/17 through the MWD SoCalWater\$mart Residential Rebate Program

47.8 Million gallons of water per day:
Average recycled water supply from IEUA's facilities

13,934 Acre-Feet/Year:
Recycled water groundwater recharge

OVER
3,800
PEOPLE

participated in FY 2016/17 Earth Day Event



3,984
STUDENTS
participated in FY 2016/17 Water Discovery Field Trip Program

10 Years IERCF
has been in operation

67
years since
IEUA's
inception

\$370,000 FY 2016/17 savings from energy optimization programs

11,574 ACRE-FEET:
FY 2016/17
STORMWATER LOCAL
RUNOFF RECHARGED

251,700 cubic yards:
Compost sold as SoilPro premium compost

SOILPRO Products

50 million gallons of wastewater collected per day at all IEUA facilities combined

198,506 TONS:
Amount of recycled materials processed at the IERCF

242 square miles:
IEUA's service area



4,896
Students reached through FY 2016/17 Garden in Every School® Program

24,170 water saving technologies/services deployed throughout the service area for FY 2016/17

Over 1,100 Recycled water connections

4 schools within IEUA's service area participated in MWD's Solar Cup competition

33,411 acre-feet:
Total recycled water demands

3.5 MEGAWATTS:
AMOUNT OF SOLAR POWER INSTALLED AT IEUA'S FACILITIES

financial sustainability

FY 2016/17 Audited Actuals

To mitigate future rate increases, the Agency remains committed to cost containment and optimizing grant funding to support capital investments in the region.

Total Revenues and Other Funding Sources \$229 Million

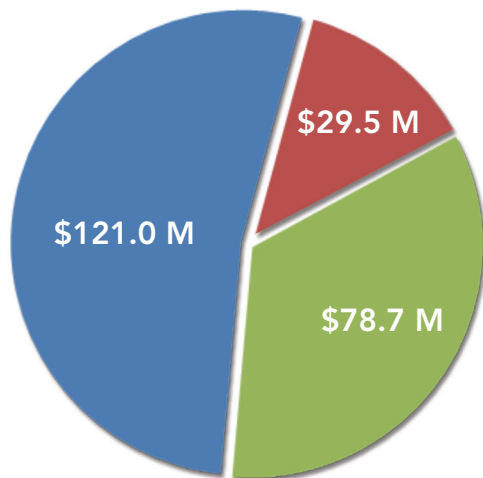
The FY 2016/17 total revenues and other funding sources of \$229 million reflect an increase of \$37 million, or 19 percent, over the FY 2015/16 actual of \$192 million.

These increases can be attributed to:

- Implementation of multi-year rates across the Agency's programs towards full cost of service funding,
- Increase in wastewater and water connection fee receipts,
- Increase in grant funding received for various capital and special projects.

(\$ Millions)	FY 2016/17
Operating Revenues	\$119
Connection Fees	36
Property Tax	46
Grants & Loans	21
Other Revenues*	7
Total Funding Sources	\$229

**Other revenues include: contract cost reimbursements from Chino Basin Desalter Authority, Inland Empire Regional Composting Authority and Chino Basin Watermaster; interest revenues; and lease revenues.*



- Operating Expenses
- Capital Expenditures
- Debt Service Costs

Total Expenses and Other Uses of Funds \$229 Million

Total expenses and other uses of funds for FY 2016/17 was \$229 million, a \$37 million increase from the FY 2015/16 actual of \$192 million, which included a \$44 million contribution to reserves. The increase can be attributed to higher debt service costs of \$71 million, from \$21 million in FY 2015/16, which is due to the refunding of the 2008A Revenue Bonds with the issuance of the 2017A Revenue Bonds. Additionally, Operations and Maintenance or special project spending increased in FY 2016/17 to \$16 million, from \$10 million in FY 2015/16.

BUSINESS PRACTICES

FISCAL RESPONSIBILITY

IEUA continues to apply for grant funding to offset program costs while being good stewards of public dollars.

IEUA received four grant awards during FY 2016/17.

The State Water Resources Control Board (SWRCB) awarded the Agency \$9.8 million in grant funding for a storm water facilities improvement project. The grant-awarded project is a joint effort between IEUA and Chino Basin Watermaster that will divert and recharge storm water, recycled water and dry-weather runoff. The project will allow IEUA to capture, recharge and convey approximately 3,166 AFY of storm water and 2,905 AFY of recycled water.

SWRCB awarded the Agency \$11,377,018 in grant funding for the Chino Basin Improvement and Groundwater Clean-Up Project. This project will help maximize opportunities to recharge vulnerable, high-use groundwater basins and optimize groundwater supplies while protecting water quality.

The U.S. Bureau of Reclamation (USBR) awarded IEUA grant funding for two WaterSMART projects: RP-3 Basin Improvement Project and Update of the Chino Basin Drought Contingency Plan. These projects will help mitigate the effects of drought on the community.

Sponsor	Program Name	Project Name	Award Amount
SWRCB	Proposition 1 Storm Water Grant Program Round 1	Storm Water Management Facilities: Wineville Jurupa and RP-3 Basins Improvements and Pumping and Conveyance System Project	\$9,800,000
SWRCB	Proposition 1 Groundwater Quality Grant	Chino Basin Improvement and Groundwater Clean-up Project	\$11,377,018
USBR	WaterSMART: Drought Resiliency Project Grant	RP-3 Basin Improvement Project	\$300,000
USBR	WaterSMART: Drought Contingency Grant	Update of the Chino Basin Drought Contingency Plan	\$200,000

State, Federal, and local agencies have financially assisted in many of IEUA's projects. These include: U.S. Department of Energy, California Department of Forestry and Fire Protection, California Department of Parks and Recreation, California Energy Commission, Federal Emergency Management Agency/California Emergency Management Agency, U.S. Department of Agriculture-Natural Resources Conservation Service, Western United Resource Development, Inc., California Public Utilities Commission, State Water Resources Control Board, U.S. Department of Interior - Bureau of Reclamation, Metropolitan Water District of Southern California, California Department of Water Resources, California Department of Public Health (presently State Water Resources Control Board), Santa Ana Watershed Project Authority, and WaterReuse Foundation.

(The contents of this document do not necessarily reflect the views and policies of any of the above referenced agencies, nor does mention of trade names or commercial products constitute endorsement or recommendation for use. Gov. Code, § 7550, 40 CFR § 31.20)

WORKPLACE ENVIRONMENT

workforce

IEUA employees work with integrity as one team, while celebrating the region's diversity. They continue to lead the Agency by staying on the forefront of the industry through education, training, innovation, efficiency, and creativity. The Agency's workforce must be trusted and transparent while being familiar with the newest technologies and the current trends. Due to this workforce characteristic, IEUA pursues public participation, which includes building collaborative relationships with elected officials, the community, industry leaders, and the engaged public. Outreach efforts are complemented with a strong legislative program that gives IEUA a voice in ensuring that future regulations and legislation create cost-effective, sustainable value.

Due to the work that is put in by IEUA employees, the Agency is able to help the region secure a reliable water supply, promote sustainability solutions, collect and treat wastewater with recycled water as the end-product – enhancing drought resiliency in the region – and provide education and outreach programs to the community and schools to encourage conservation of our precious resources.

The Agency's workforce is comprised of highly skilled, motivated, professional, and committed employees who work to ensure the Agency reaches its goals.



For the 19th consecutive year, the Inland Empire Utilities Agency (IEUA) has been awarded the **Certificate of Achievement for Excellence in Financial Reporting** by the Government Finance Officers Association of the United States and Canada for its Fiscal Year 2015/16 comprehensive annual financial report (CAFR). The achievement reflects the commitment of the Agency to meeting the highest principles of governmental budgeting, financial accountability and transparency.

IEUA was presented with the **Collaboration Program of the Year** award at the tenth annual San Bernardino County Water Conference for the *Kick the Habit* campaign. The campaign was created to address service area needs and withstand the test of time: to change people's behaviors and kick the water wasting habit for good.

Governor Edmund G. (Jerry) Brown Jr. signed **SB 970**, legislation sponsored by IEUA, which recognizes the value of a regional approach to diverting food waste from landfills. The grant program established by **SB 970** enables publicly owned wastewater treatment facilities to apply for funding to expand the capacity of the digesters so it can process diverted food waste from throughout their regions.

The Inland Empire Regional Composting Authority received the California Water Environment Association's Santa Ana River Basin Section **Engineering Achievement Award** for the Inland Empire Regional Composting Facility's (IERCF) Conveyor Project. This project improves the safety and efficiency of material handling in the IERCF. The project modified and expanded the facility's conveyance system, substantially reducing heavy equipment traffic.

TRIFECTA of GRAND PRIZE AWARDS!

The American Academy of Environmental Engineers and Scientists® presented IEUA grand prize awards in three categories for the Agency's Regional Water Recycling Plant No. 5 Battery Storage Project. The awards represent the best of today's environmental engineering and science practices. The Agency received the grand prize in environmental sustainability, operations/management and planning. The first-of-its-kind battery storage project stores excess renewable generation to power IEUA's facilities when demand on the grid is high.

IEUA received the **Award of Distinction for External Publications** from the California Association of Public Information Officials for the Agency's 2016 Annual Report. The award aims to identify public relations work that represents standards of excellence and creativity, and work that stands as an inspiration for those in the public relations profession.

IEUA received the **District Transparency Certificate of Excellence** from the Special District Leadership Foundation in recognition of outstanding efforts to promote transparency and good governance.

IEUA received the **Achievement of Excellence in Procurement Award**. The award is granted to organizations that demonstrate excellence in procurement; including excellence in innovation, professionalism, e-procurement, productivity, and leadership.

highlights for the year – awards and accomplishments

IEUA RANKS GOLD

IEUA was presented with a gold rating by the Water Foundation for the Agency's Sustainable Water Management Profile. IEUA received the gold rating for providing leadership and support for planning, implementation and collaboration needed for sustainable water management for the Agency's member agencies, regional partners and the people who share dependence on common water supplies. These efforts, especially in recycled water, groundwater clean-up and recharge, and water efficiency, have achieved more stable and sufficient local water supplies and improved water quality.





6075 Kimball Avenue
Chino, CA 91708
909-993-1600
www.ieua.org

