

Garden in Every School[®]



Program Partners & Sponsors



Lewis Group of Companies

Garden in Every School® Program Overview

The purpose of the GIES program is to educate children and their families, school staff, and other community members about the efficient use of water through the establishment of thematic school gardens that feature climate appropriate plants and efficient irrigation methods.

- Program began in 2004
- Installed 60 gardens since inception
- \$4,500 assisted grant
- School representative must attend workshop to be eligible
- Approximately four schools per year are selected
- Build relationships with schools and introduce water-use efficiency opportunities through new irrigation techniques, low water use plants and state-aligned curriculum
- Promote hands-on outdoor learning
- Aims to build water-wise educator networks

Benefits of School Gardens as Outdoor Classrooms

- Encourages wise-water usage.
- Underscores good nutritional habits.
- Illustrates the web of life.
- Celebrates multi-cultural awareness.
- Effective with different learning styles (sight, smell, taste and touch).
- Increases students' self-esteem.
- Enhances academic instruction.
- Builds teamwork.



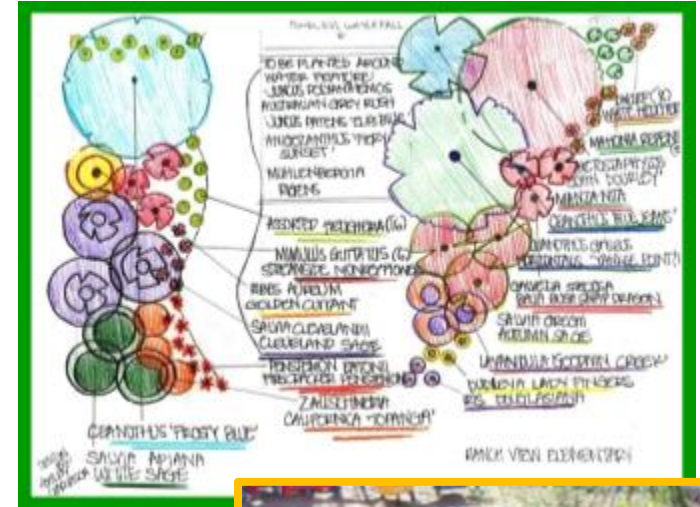
Components of a Successful School Garden



- ✓ School Staff
- ✓ Maintenance Team
- ✓ Students
- ✓ Parents
- ✓ Community

What the Program Includes

- \$4,500 grant funding
- Assistance in the establishment of a theme garden
 - Site selection
 - Irrigation installation
 - Design and installation of the garden (Note: Site clearing is the responsibility of the school and maintenance team)
- Funding of climate appropriate plants, vegetables, garden tools, irrigation equipment.
- Access to state-aligned curriculum materials promoting the efficient use of water for teachers and parents.
- And to showcase your school and stand out as an environmental steward in your community.



What the Program Does Not Include

- Site Clearing
- Longevity Maintenance
 - Minimum four year commitment
- Additional Labor
- Grant funding cannot be used to purchase non-related garden materials including text books, fences, benches, water features, etc.

Task List & Schedule

	Task Name	Finish
1	Garden in Every School® Workshop	February 27, 2018
2	Applications Due	March 29, 2018
3	Review Applications & Pre-site Evaluations (check for qualifications)	April 2018 – May 2018
4	Award Garden Grants	May 2018
5	Develop Garden Design & Irrigation Parts List	August 2018 – September 2018
6	Site Preparation (schools responsibility)	September 2018 – November 2018
7	Garden Installation	November 2018 – December 2018
8	Dedication	Spring 2019
9	Program Summary & Evaluation Due	June 2019

Garden Design Criteria

- Efficient Irrigation
- Water Connection Hook Up
- Water-Wise Plants
- Vegetables – Up to 7 Vegetable Beds Maximum
- Other Plants & Themes



School Garden Themes

- Wise-Water Usage
- Bird and Butterfly
- Native Plants
- Sustainable Agriculture
- Literacy
- Sensory
- California Regions
- Salsa, Mixed Vegetable Salad or Root Vegetables

Sustainable Agriculture



Sensory, Bird & Butterfly



California Regions



Site Preparations

Turf Removal



Before

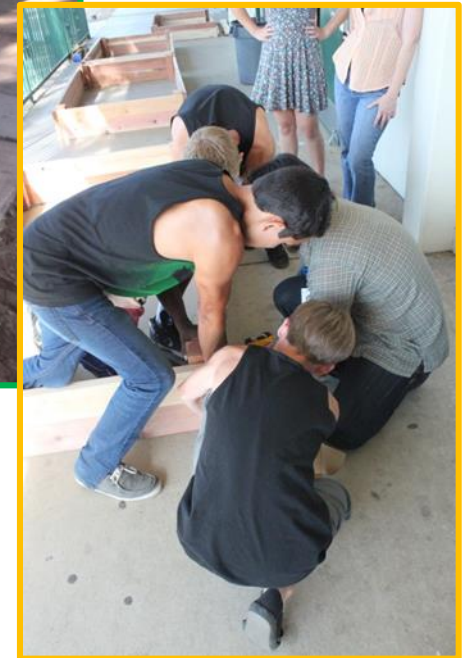


After

Digging Trenches



Building Boxes



Soil Preparations & Plantings



Dedications



Oak Park Elementary

Fontana



Ranch View

Ontario



Eagle Canyon

Chino Hills



Application Walk-Thru



“Water Wise” Garden in Every School® 2018/19 Garden Funding Program

Introduction to the Garden in Every School® Program:

The Garden in Every School® Program (GIES) in the western Inland Empire region was initiated in 2004 to provide a native landscape garden to approximately four schools per year within Inland Empire Utilities Agency’s (IEUA) service area (Chino, Chino Hills, Fontana, Upland, Ontario, Montclair, and Rancho Cucamonga). Each year, approximately four schools will be selected from a pool of competitive applicants to participate in the Garden in Every School® Program (GIES).

The purpose of the GIES program is to educate school-age children and their families, school staff, and other community members about the efficient use of water through the establishment of thematic school gardens that feature climate appropriate plants and more efficient irrigation methods that are coordinated with provision state-aligned curriculum materials. Building this relationship with the schools is significantly important to IEUA and its partners. Through GIES, participating schools, school boards, and maintenance districts are introduced to water-use efficiency opportunities through new irrigation techniques, low water use plants, and curriculum.

Schools participating in the garden funding program will receive the following:

- Assistance in the establishment of a thematic garden, including site selection, irrigation installation, design and installation of the garden (*Note: Site clearing is the responsibility of the school and maintenance team*);
- Funding of climate appropriate plants, vegetables, garden tools, irrigation equipment and state-aligned curriculum materials;
- Access to state-aligned curriculum materials promoting the efficient use of water for teachers and parents;
- An opportunity to showcase your school and stand out as an environmental steward in your community.

Program Sponsors and Partners:

Sponsors and partners in the Garden in Every School® Program include the Inland Empire Utilities Agency (IEUA), Chino Basin Water Conservation District (CBWCD), the Cities of Chino, Chino Hills, Ontario, Upland, Cucamonga Valley Water District (City of Rancho Cucamonga), Monte Vista Water District (City of Montclair), Fontana Water Company, San Antonio Water Company (City of Upland); and the Lewis Group of Companies. Each of the partners in the Garden in Every School® Program strive to enhance the quality of life in the Inland Empire by promoting water-use efficiency and environmental protection through the Garden in Every School® Program.

CONTACTS:

Michelle O’ Brien (IEUA): 909.993.1741; mobrien@ieua.org
 Andrea Carruthers (IEUA): 909.993.1935; acarruthers@ieua.org
 Lisa Morgan-Perales (IEUA): 909.993.1520; lperales@ieua.org



School Qualifications:

Public and private elementary schools in IEUA and its retail agencies’ service area (i.e. schools within the cities of Chino, Chino Hills, Fontana, Ontario, Montclair, Rancho Cucamonga, Upland, and a small portion of Rialto and Bloomington) are eligible to apply for the school garden funding program, providing the following:

- Schools must attend the recruitment and program overview workshop.
- A completed application must be submitted by the **March 29, 2018 deadline**. The application must contain signatures of commitment from the Maintenance/Facilities Manager, the appointed Lead Teacher, Lead Parent, Principal, and have the Superintendent’s approval.
- Sites are not limited in size, but if the site is large, a suitable support team of volunteers must be demonstrated. *Note: The limit of vegetable beds is to not exceed seven.*
- Eligible schools must exhibit a commitment to sustaining the garden and intend to use it for curriculum connections in post-project years.
- The school must commit to hands-on participation by teachers, parents and students on specified planting and garden work days.
- In accepting this funding, the school also agrees to provide a summary and evaluation of the project when complete, describing how the teachers used the landscape for garden-based education, including efficient water usage.
- Schools must participate in a garden dedication ceremony for the students, school staff, parents, and community members, including partnering agencies, program sponsors and the media.
- **All funded items become the property of the school and IEUA and partners are not liable or responsible for the continued maintenance/care of the garden.**

Garden in Every School® Grant Amount:

Participants will be awarded a garden grant valued up to a maximum of \$4,500 in contract labor/equipment rentals, irrigation hardware, plants, and additional garden equipment/materials (per approval) relating to the garden. IEUA and CBWCD staff time in coordinating and administering the program is not included in the grant award.

Past Participants:

2004/2005 Alta Loma Elementary Butterfield Ranch Elementary Euclid Elementary Grant Elementary Lehigh Elementary Magnolia Elementary Rhodas Elementary	2006/2007 Buena Vista Arts-Integrated El Rancho Elementary Liberty Elementary Lital Elementary Poplar Elementary Sycamore Elementary Victoria Groves Elementary	2008/2009 Glenmeade Elementary Jasper Elementary Ontario Center School Ferndew Elementary Grapeland Elementary	2014/2015 Cal Aero Preserve Cypress Elementary Country Springs Elementary
2005/2006 Coyote Canyon Elementary Foothill Knolls Elementary Hidden Trails Elementary Newman Elementary North Tamarind Elementary Ranch View Elementary	2007/2008 Chaparral Elementary Linda Vista Elementary Peppertree Elementary Los Amigos Elementary Oak Park Elementary Our Lady of the Lourdes	2009/2010 Stork Elementary Baldy View Elementary Howard Cattle Elementary Mariposa Center School	2011/2012 Los Osos High School Monte Vista Elementary Redeemer Lutheran Upland High School
	2010/2011 Rancho Cucamonga High Monterey Elementary Briggs Elementary Mission Elementary	2012/2013 Edison Academy Etiwanda Intermediate Sultana Elementary Vina Danks Middle School	2015/2016 Citrus Elementary Cortez Elementary Eagle Canyon Elementary Etiwanda Colony Golden Elementary Truman Middle School

Deadline: March 29, 2018

Questions



+



+



=

