

Santa Ana River Conservation and Conjunctive Use Program

California Environmental Quality Act
EIR Scoping Meeting

December 7, 2016



Meeting Agenda

- Purpose of Meeting
- CEQA Overview
- SARCCUP Description
- CEQA Environmental Topics
- CEQA Schedule
- Public Comments

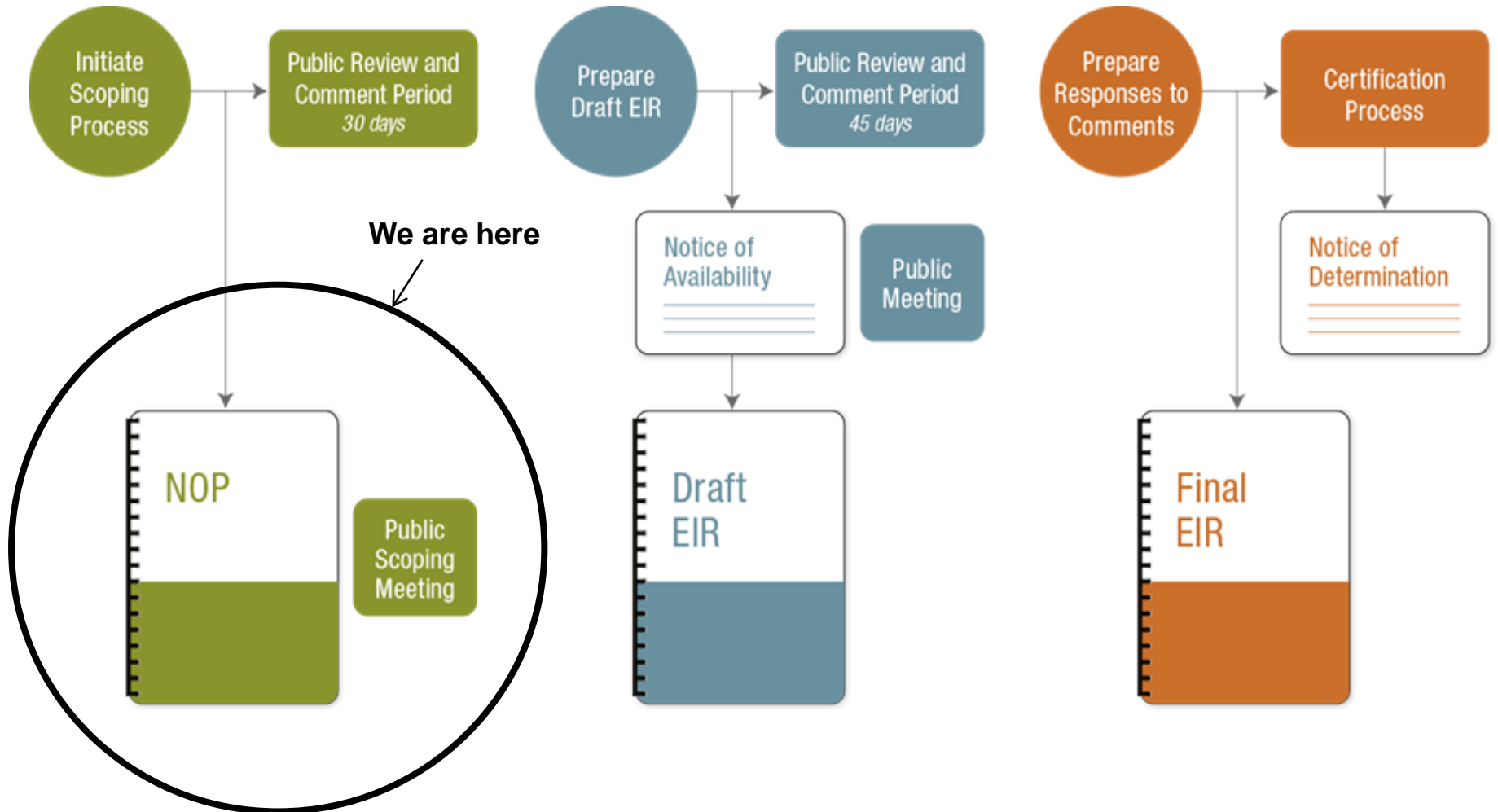
Purpose of Meeting

- **Public Scoping**
 - This is a Scoping Meeting compliant with the California Environmental Quality Act (CEQA).
- **Initiate CEQA Process**
 - Notify public that an Environmental Impact Report (EIR) is being prepared for the Santa Ana River Conservation and Conjunctive Use Program (SARCCUP).
- **Describe Project**
 - SARCCUP will provide a program that improves the watershed's water supply resiliency and enhances the natural and built environment.

California Environmental Quality Act (CEQA)



CEQA Process for an EIR



Notice of Preparation (NOP)

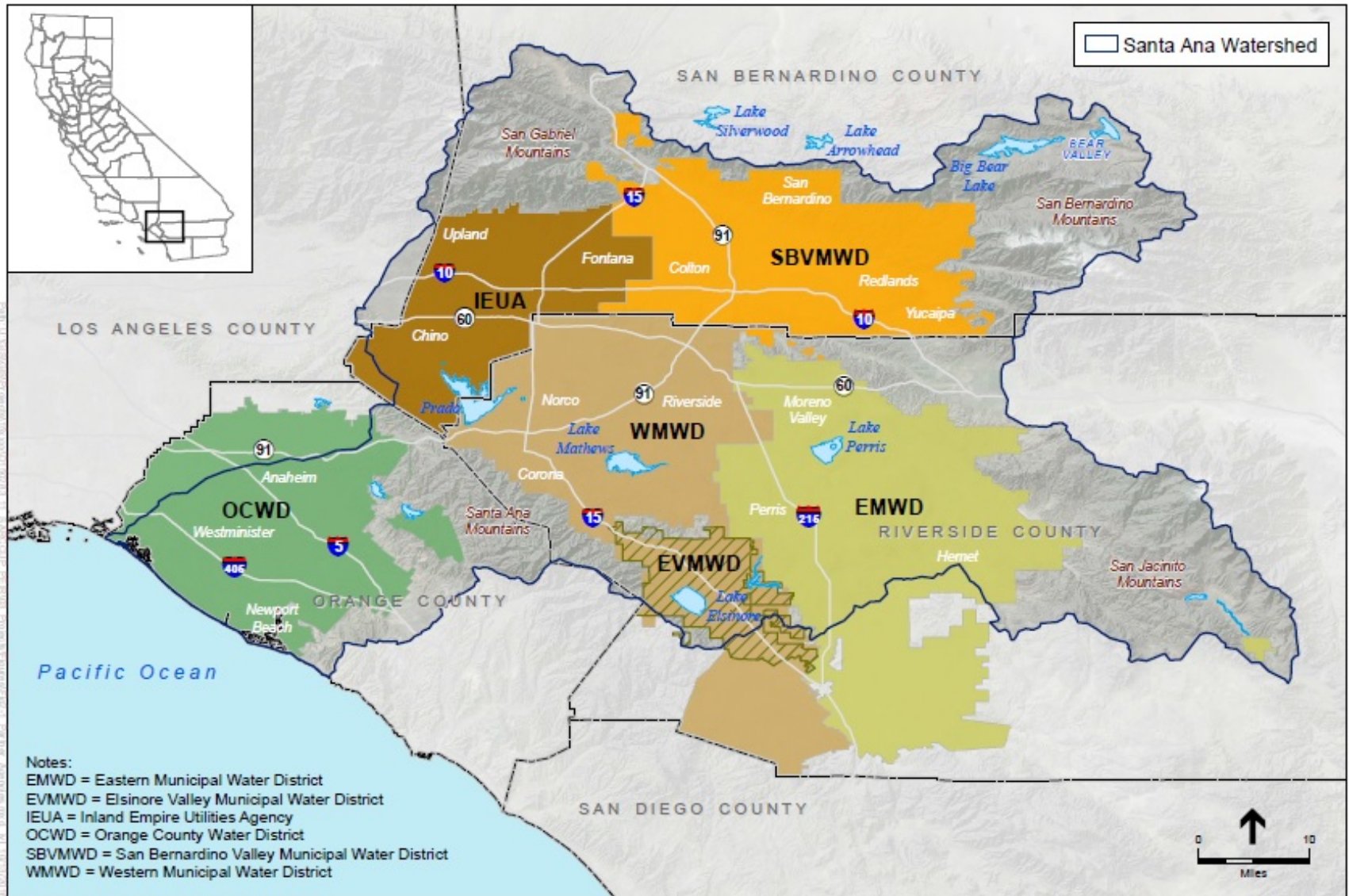
(CEQA Guidelines 15082)

- An NOP is required by CEQA to announce that a lead agency is preparing an **EIR** for a project.
- The NOP facilitates a **scoping process** to gather **stakeholder input** on what potential impacts the EIR should consider.
- Comments from stakeholders help to focus the EIR analysis on **stakeholder concerns**.

SARCCUP Overview

- Watershed-scale collaborative program
- Improve water supply resiliency and reliability
- Increase available dry-year yield from local groundwater basins
- Multi-agency water management plan
 - Inland Empire Utilities Agency
 - Eastern Municipal Water District
 - Orange County Water District
 - San Bernardino Valley Municipal Water District
 - Western Municipal Water District
 - Elsinore Valley Municipal Water District

Regional Location

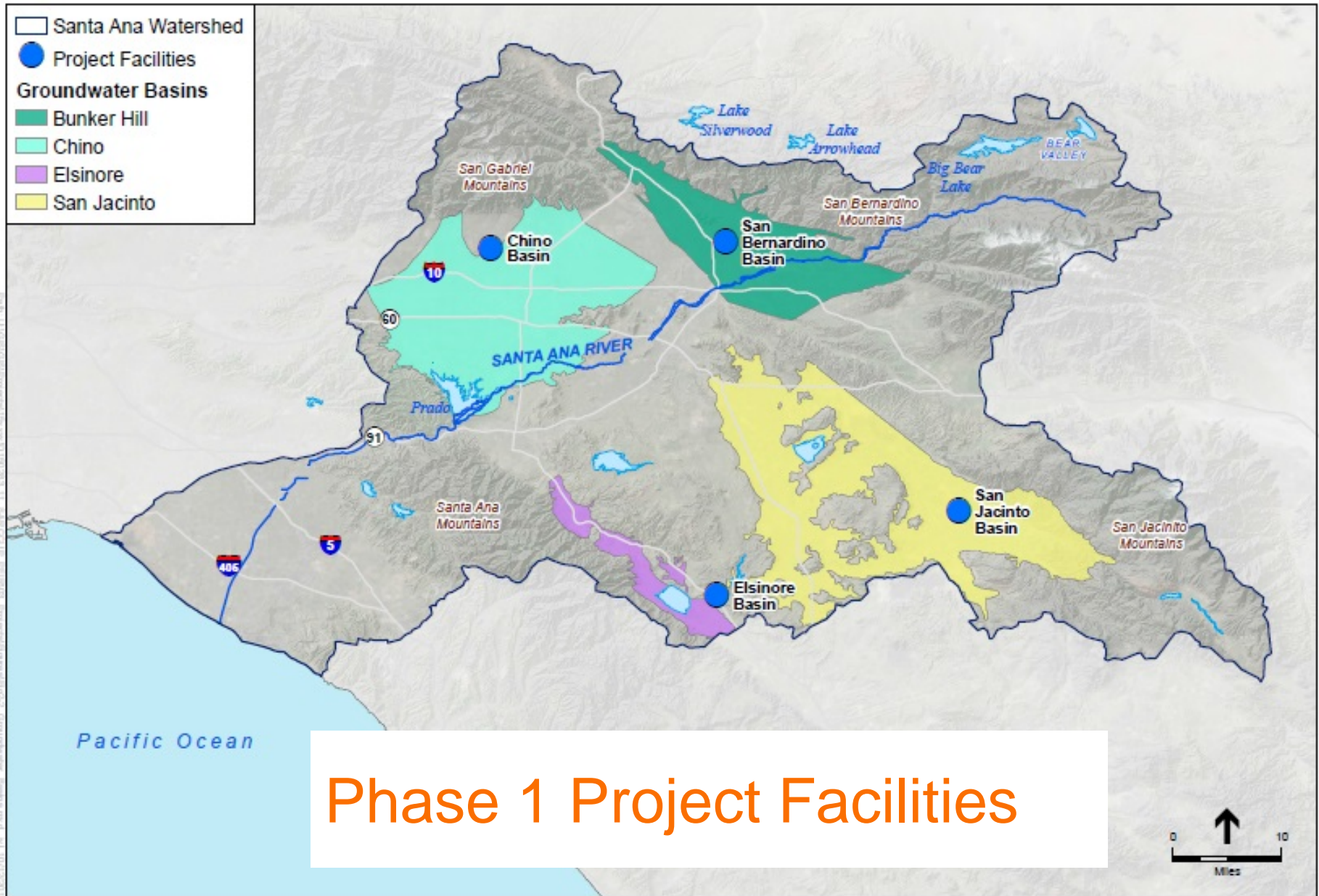


SARCCUP Objectives

- Utilize available storage space in local groundwater basins and capture water during wet periods
- Provide new local dry-year water supply to supplement imported water during dry periods, drought, or other emergency conditions
- Reduce water demand with removal of non-native plants and implementation of water conservation measures
- Enhance the watershed environment through restoration of riparian and Santa Ana sucker habitat, and *arundo donax* removal

SARCCUP Components – Phase I

- Conjunctive Use Program:
 - Bunker Hill Basin/San Bernardino Basin Area
 - San Jacinto Basin
 - Elsinore Valley Basin
 - Chino Basin
- Santa Ana Sucker Habitat Restoration
- Invasive Arundo Removal
- Water Use Efficiency and Conservation



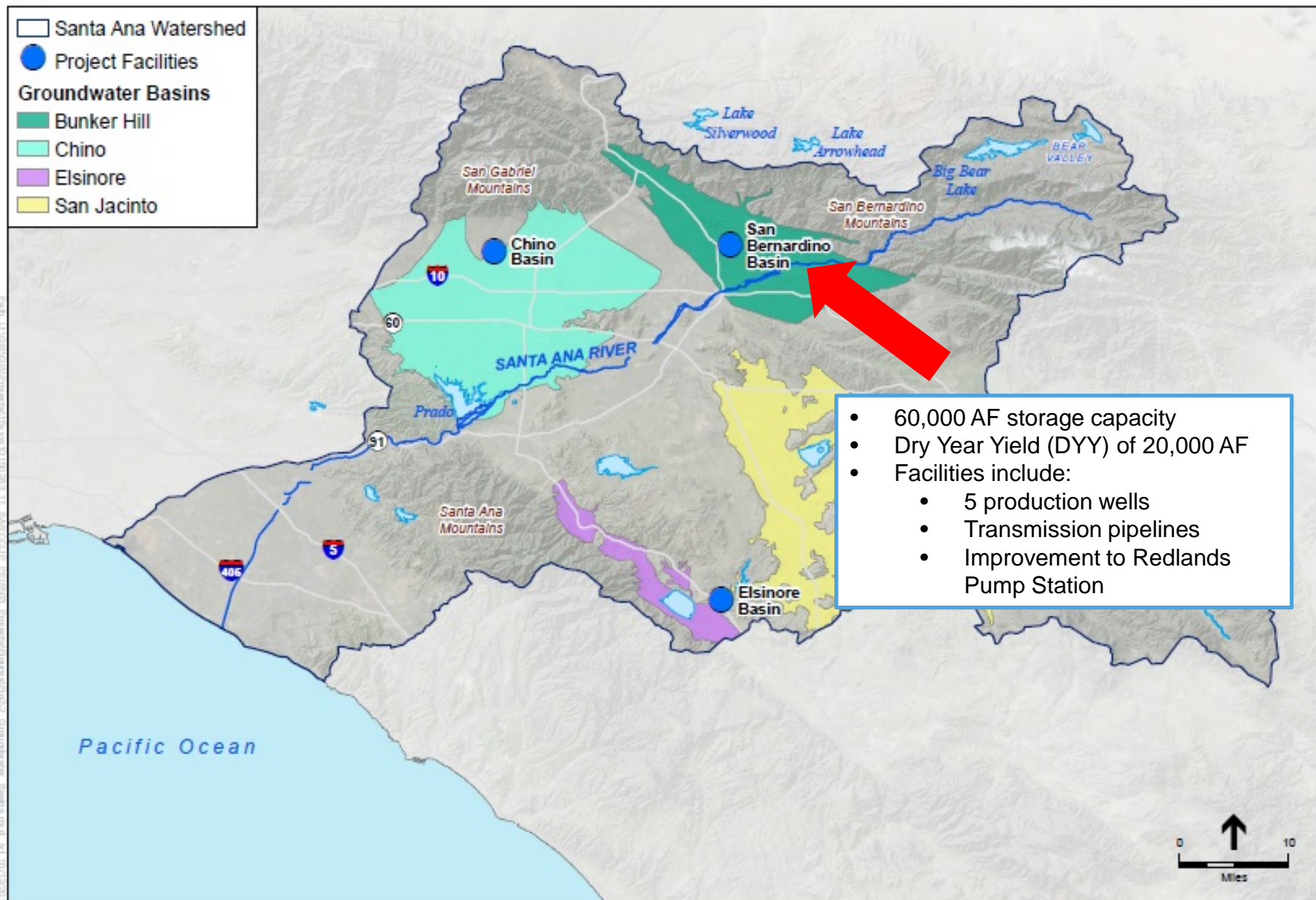
Phase 1 Project Facilities



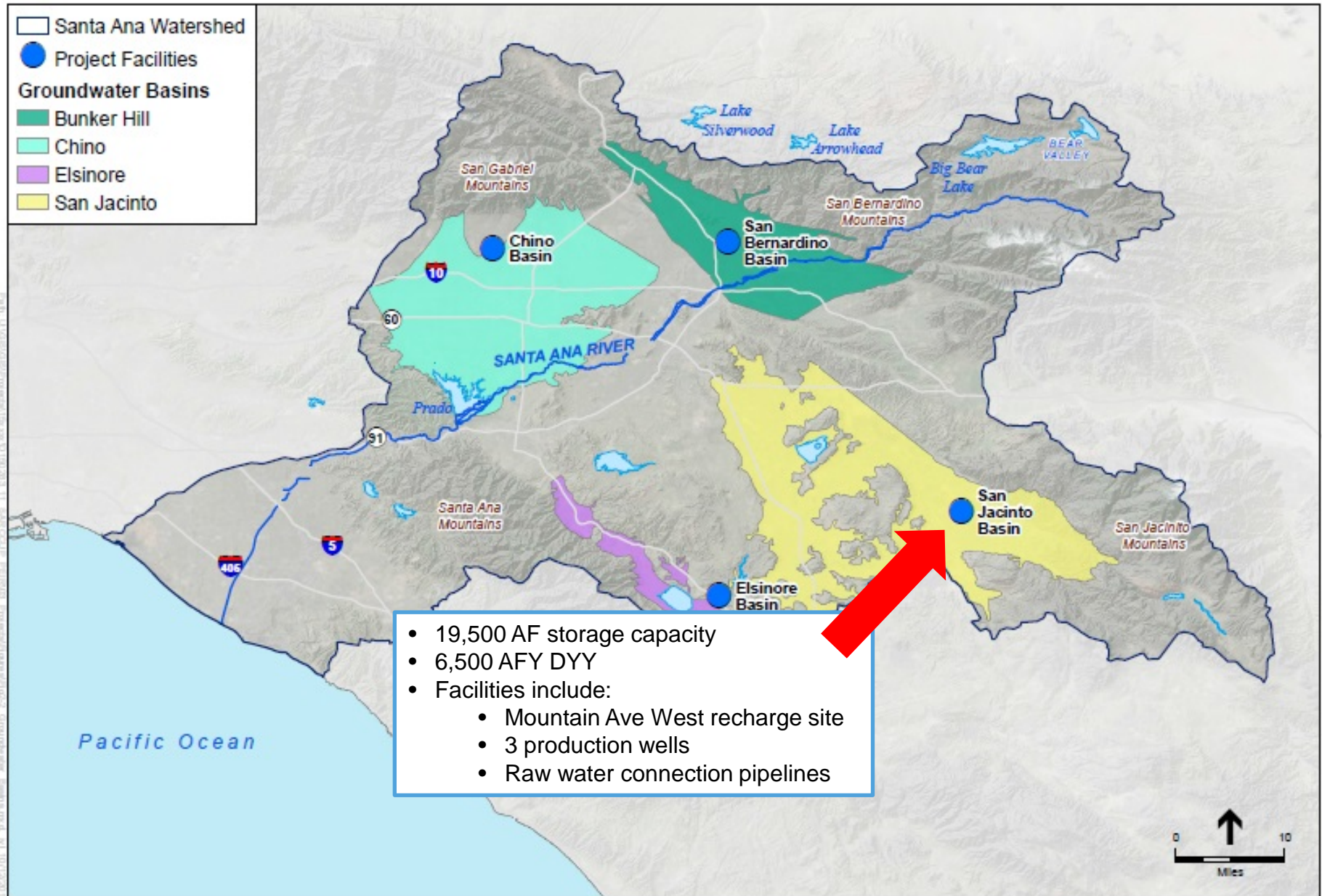
Conjunctive Use Program – Phase I

Groundwater Basin / Bank	Total Storage (AF)	Dry Year Yield (AFY)
Chino	96,000	32,000
Elsinore Valley	4,500	1,500
Bunker Hill/SBBA	60,000	20,000
San Jacinto	19,500	6,500
TOTAL	180,000	60,000

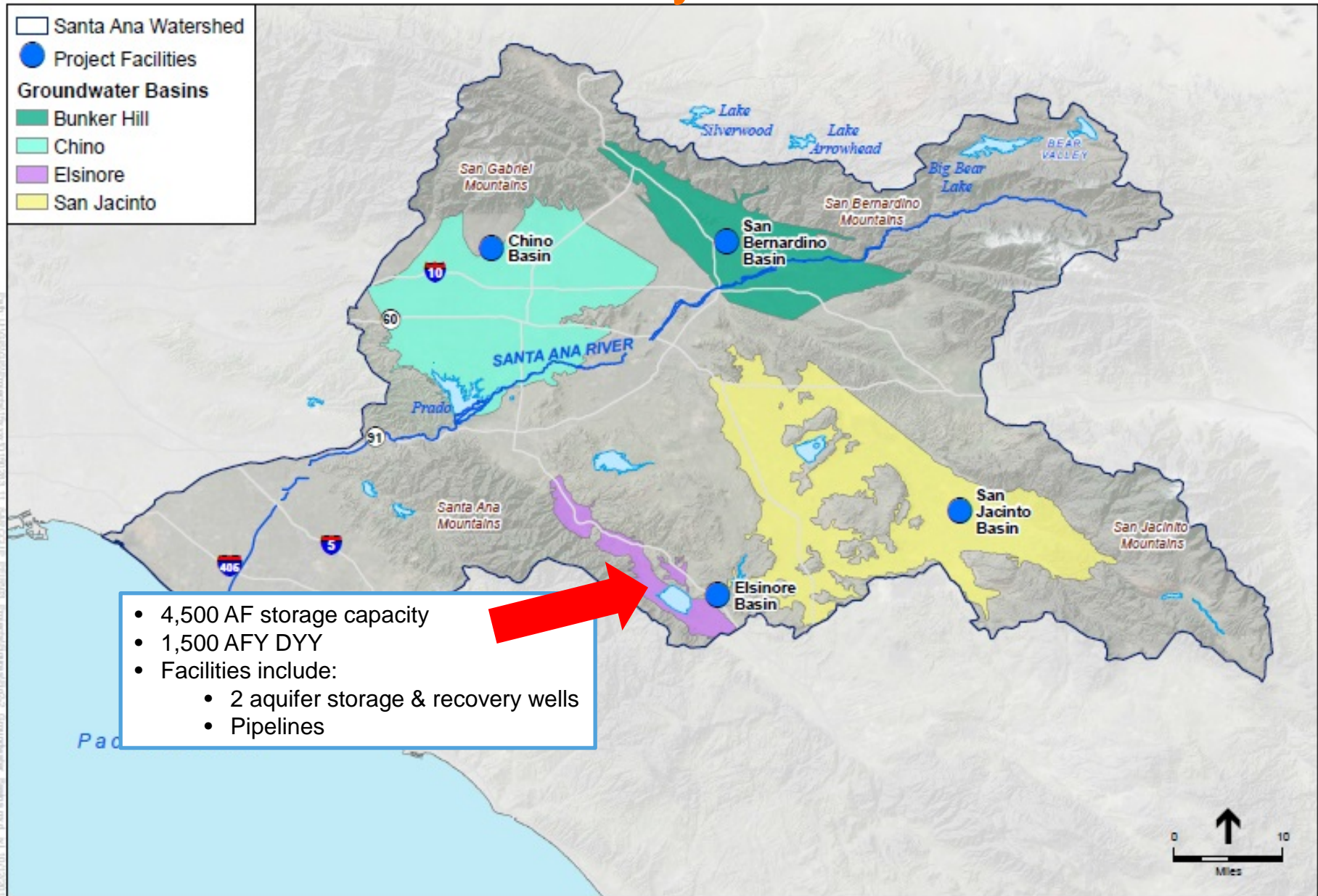
Bunker Hill / SBBA Bank



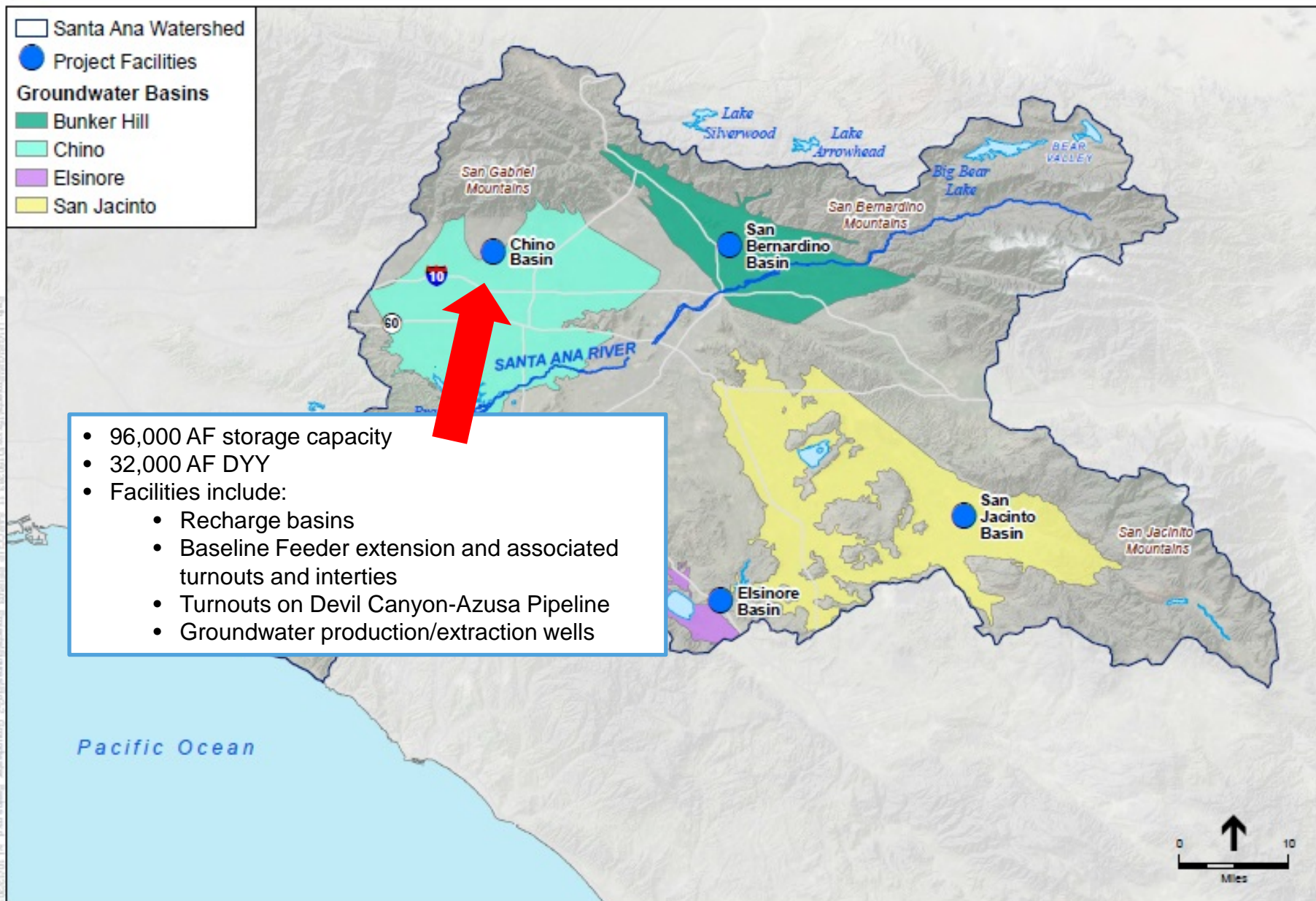
San Jacinto Basin Bank



Elsinore Valley Basin Bank



Chino Basin Bank



- 96,000 AF storage capacity
- 32,000 AF DYY
- Facilities include:
 - Recharge basins
 - Baseline Feeder extension and associated turnouts and interties
 - Turnouts on Devil Canyon-Azusa Pipeline
 - Groundwater production/extraction wells

Santa Ana Sucker Habitat Restoration

- Responsible Agency: SBVMWD
- Location: Riverside County along Santa Ana River
- Create 18,250 linear-feet new Santa Ana sucker habitat
- Install infrastructure, native plants seeding, irrigation systems, signage, fencing



Invasive Arundo Removal

- Responsible Agency: OCWD
- Location: Riverside County along Santa Ana River between Prado Basin and I-215 and 91 Freeway
- Eradicate 640 acres of invasive, exotic plant *arundo donax*
- Restore wetland habitat, specifically riparian habitat



Water Use Efficiency and Conservation

- No physical features
- Expand existing water use efficiency initiatives that received grant funding:
 - Conservation-Based Water Rates
 - Smartscape Program

Topics to be Analyzed in EIR

Direct, Indirect and Cumulative impacts to:

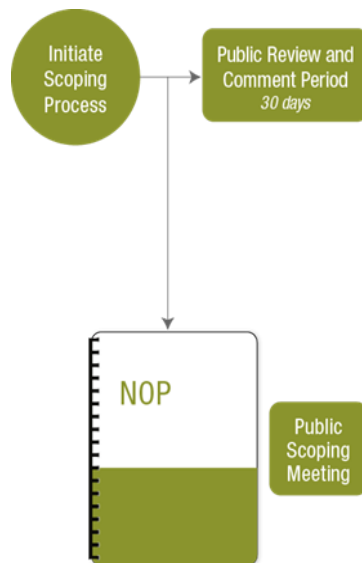
- Aesthetics
- Air Quality
- Agriculture & Forestry
- Biological Resources
- Cultural Resources
- Geology, Soils & Seismicity
- Greenhouse Gas Emissions
- Hazards & Hazardous Materials
- Hydrology & Water Quality
- Land Use & Planning
- Noise
- Population & Housing
- Public Services
- Traffic & Transportation
- Utilities & Energy

Topics to be Analyzed in EIR

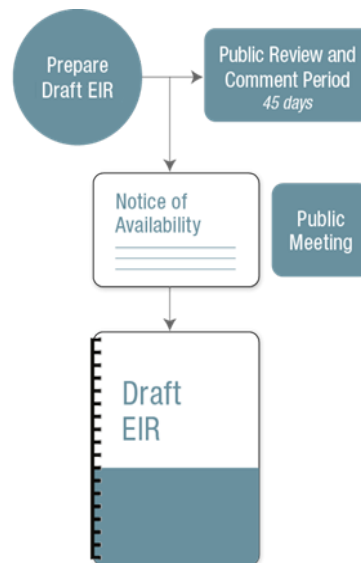
- Growth Inducement
- Alternatives
 - No Project Alternative
 - Alternatives that lessen significant impacts while still meeting Project Objectives

CEQA Schedule – Next Steps

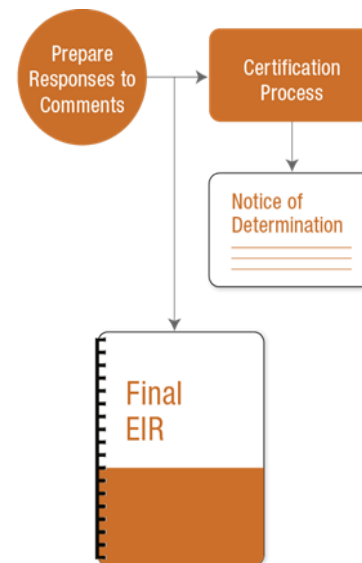
Scoping Period
Ends
Dec. 12, 2016



Draft EIR
Publication
Spring 2017



Final EIR
Publication
Summer 2017





NOP Comments

- Comment period closes **December 12, 2016**
- Submit comments tonight or...

Email or Mail comments to:

Ms. Sylvie Lee
Inland Empire Utilities Agency
6075 Kimball Avenue
Chino, CA 91708
Phone: (909) 993-1646
Email: slee@ieua.org