

## Renew and Recycle

Serving the Cities of Chino, Chino Hills, Fontana, Montclair, Ontario and Upland, as well as Monte Vista Water District, Cucamonga Valley Water District, Fontana Water Company, San Antonio Water Company and the Water Facilities Authority

## The Inland Empire Utilities Agency Creates Energy Through the Use of Wind Turbines

Information provided by David Mendez, IEUA Construction Project Manager

Foundation Windpower has completed the installation of a 1.0MW wind turbine unit at the Inland Empire Utilities Agency's (IEUA) Regional Plant No.4 located in Rancho Cucamonga. The wind turbine is scheduled to be commissioned early November.

Every on-site wind turbine represents a clear and powerful statement about an organization's ongoing commitment to the environment and the community it serves.

Wind turbines dramatically lessen the impact on the land while eliminating the need for new electrical towers, power lines and smoke stacks.

Each 1.5 million kilowatt hours of renewable energy produced:

- Eliminates 1,269 tons of CO2
- Saves 915 barrels of oil
- Can power 169 average-size homes
- Equals planting 295 acres of trees

Added green benefits include:

- Eliminating the need for more transmission lines
- Increased energy independence
- Creation of "green jobs"



Images provided by John Mellin, IEUA Senior Operations Assistant

**Water Efficiency Tip:**  
**Fall is planting time.**  
Planting in fall gets the roots established (they grow more in fall and winter) so in spring the plants are prepared for the surge of growth. Use water wisely. Water plants only when needed, not by the clock or calendar. Water at night or early morning, when evaporation is much lower and air is calmer.

**Upcoming Events**

**November 5: SAWA Bird Festival**  
10:00am—2:00pm  
Chino Creek Wetlands and Educational Park

**November 5: Let's Go Native Plant Class**  
9:00am—11:00am  
Magnolia Recreation Center

**November 5: Backyard Composting**  
9:00am—1:00pm  
Chino Basin Water Conservation District (Sponsored by the Monte Vista Water District)

**November 12: Water Wise Landscaping Workshop**  
9:00am—12:30pm  
Chino Basin Water Conservation District

**December 3: Sustainable Holiday Craft Workshop**  
10:00am—1:00pm  
IEUA Event Center

## EPA Pauses Water Softener NOI

Article provided by the Association of California Water Agencies (ACWA)  
Article submitted by Kristin Goree on 9/26/11 in Federal Relations Water News

Last November, EPA's WaterSense program issued a notice of intent to develop efficiency and performance specifications for cation water softeners. ACWA, along with a coalition of other organizations including the Association of Metropolitan Water Agencies and various ACWA member agencies, asked EPA to consider the impacts of salts on water quality before proceeding with the NOI. When this letter did not receive a satisfactory answer, the coalition asked EPA to stop working on the NOI.

EPA notified the coalition in August that they would not move forward with the NOI. At a meeting in Washington DC this week, EPA once again emphasized to stakeholders that they had "pushed the pause button" on this effort. ACWA will continue to follow this issue closely as several organizations including NRDC, the Alliance for Water Efficiency and Clean Water America Alliance are working to encourage EPA move forward with the NOI.

The water community will continue to work on the development of a joint program with the EPA to evaluate, and at some future time, approve the new salt-less technology which will provide our community greater flexibility to address hard water without the salt impacts on our recycled water supplies. - **Martha Davis, IEUA Executive Manager of Policy Development**

Residents and businesses in the Inland Empire have invested hundreds of millions of dollars in the development of local recycled water and groundwater supplies to drought proof our economy. And it has worked.

Salt is the single most important constraint on our future ability to use recycled water and groundwater. That is why our cities and water agencies are so concerned about the use of traditional residential self-regenerating water softeners. These softeners – the type that require the use of bags and bags of salt to make the equipment work -- can contribute up to 30 pounds of salt each month into our community's water treatment system. That is a pound of salt per day! If the wastewater gets too salty from the discharges from these softeners, it becomes unusable or tremendously expensive (over \$400 million in additional treatment costs) to remove enough salt to make it usable for recycled water and groundwater recharge.

There are alternatives to this one type of water softener that IEUA is regulating. Non-salt using devices are available that protect homes from the effects of hard water. But for residents who still want to have a salt-based softener, there are also professional services that collect the salt canisters (called exchange tanks) and discharge the brine into a separate treatment system -- where the salt belongs—so that the salt never mixes with the region's wastewater or ultimately gets introduced into our groundwater.

Our local industries and large commercial businesses are already working hard to keep salt out of our recycled water and groundwater. We all need to do our part. Our region's future water supplies depend upon it! - **Terry Catlin, IEUA Board President**

View Daily Bulletin Editorial Published 10/20/11 Re: Salt Regulation - [http://www.dailybulletin.com/editorial/ci\\_19159733](http://www.dailybulletin.com/editorial/ci_19159733)

**Automatic Water Softener Removal Rebate is a WIN-WIN!**

It puts more money in your pocket (up to \$2,000) and protects recycled water for our future

**FACT**  
Automatic water softeners leave a salty waste that harms our recycled water efforts aimed to ensure our community has a reliable water source for the future.

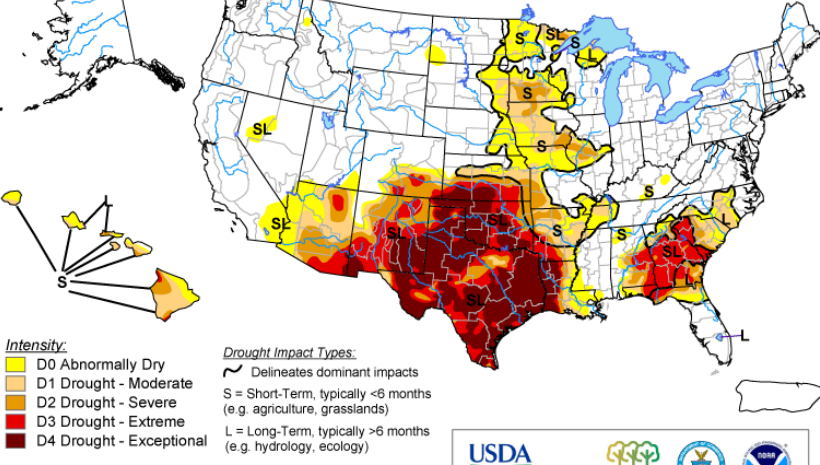
**TAKE ACTION**  
Remove your automatic water softener now and get a rebate up to \$2,000 and free disconnection and removal. It's that important.

Visit [www.IEUA.org](http://www.IEUA.org) or call (909) 993-1550 today to get your rebate.  
Brought to you by the Inland Empire Utilities Agency in partnership with your local water provider.

Presidents of the following cities qualify: Chino, Chino Hills, Fontana, Montclair, Ontario, Rancho Cucamonga, Upland

## U.S. Drought Monitor

October 18, 2011  
Valid 8 a.m. EDT



**Drought Summary**

A lull in precipitation usually occurs in the Southwest during the fall months between the end of the southwestern summer monsoon and the start of the winter rainy season. Not surprisingly, little or no precipitation fell, and temperatures averaged above normal throughout the area. But since most of this area saw a wet week during early October, no changes were made to the depiction.

## IEUA Recognizes Industries for Outstanding Compliance Records

Information provided by Craig Proctor, IEUA Pretreatment and Source Control Supervisor

Each year IEUA's Pretreatment and Source Control Department in collaboration with the Sanitation Districts of Los Angeles County, Santa Ana Watershed Project Authority, and our member agencies recognizes industries that discharge to the Non-Reclaimable Wastewater and Regional Systems for their outstanding compliance record with wastewater discharge limits and permit requirements. At the October 5, 2011 IEUA Board Meeting, IEUA recognized twenty-seven of its industries for their outstanding compliance record in calendar year 2010.

The criteria used in the selection for the industry award is based on several items. The first is that the industry must be a Significant Industrial User (SIU). A SIU is defined as an industry subject to federal categorical pretreatment standards; discharges wastewater at a flow rate of 25,000 gallons or more per day; contributes a process waste stream which makes up 5% or more of the average dry weather hydraulic or organic capacity at the treatment plant; or has a discharge that has a reasonable potential to adversely affect the treatment plant operations.

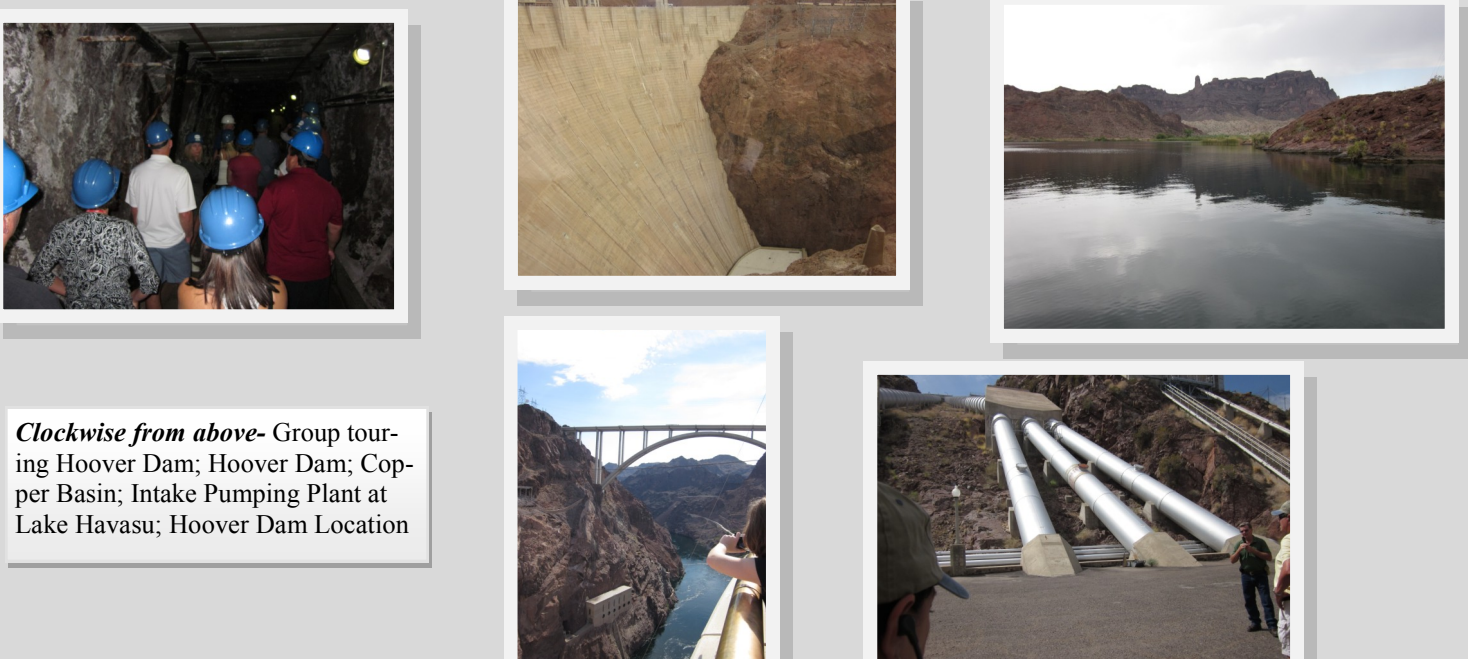
The second criterion for award selection is that the industry must also have not had any violations during the year. Violations that would exclude an industry include any Notices or Letters of Violation, failure to pay disposal fees, and any other noncompliance with general permit conditions and ordinance requirements.

The twenty-seven industries selected to receive the Certificate of Recognition for Compliance Calendar Year 2010 are: **NRW North System Industries** - California Steel Industries, Carlisle Tire and Wheel, Coca-Cola North America, GenOn West LP (formerly RRI Energy), Inland Empire Regional Composting Authority, Inland Empire Utilities Agency (RP-1 Filtrate), Nestle Waters North America, Inc., Niagara Bottling, LLC, Praxair Inc., Temple-Inland Inc., TI Wire, Unifirst Corporation, Unitech Services Group, Vista Metals Corporation; **NRW South System Industries** - OLS Energy; **Regional System Industries** - American Beef Packers, Inc. (Chino), Aquamar, Inc. (Rancho Cucamonga), Coca-Cola USA (Ontario), Discus Dental, LLC (Ontario), Envision Plastics Industries (Chino), Inland Powder Coating (Ontario), Nestle Waters North America (Ontario), Pac Rancho, Inc. (Rancho Cucamonga), Parco, Inc. (Ontario), Schlosser Forge Company (Rancho Cucamonga), State Circuit Boards (Chino), Wing Lee Farms, Inc. (Chino)

## The Metropolitan Water District of Southern California Conducts a Hoover Dam to Colorado River Inspection Trip

On September 30 through October 2, 2011, the Metropolitan Water District of Southern California (MWD) lead a Hoover Dam to Colorado River Inspection Trip, sponsored by IEUA Board Vice President and MWD Board Representative Michael Camacho.

As part of the Inspection Tour, the group visited Hoover Dam, Copper Basin, toured the Intake Pumping Plant and Parker Dam Area, observed the Colorado Indian Tribes Area and Palo Verde Irrigation District. The group learned about the Colorado River Aqueduct (sources, water intake, coverage, etc.), power distribution, intake plants processes and uses, water quality, invasive species, water issues, water policy, history, etc.



Clockwise from above- Group touring Hoover Dam; Hoover Dam; Copper Basin; Intake Pumping Plant; Lake Havasu; Hoover Dam Location

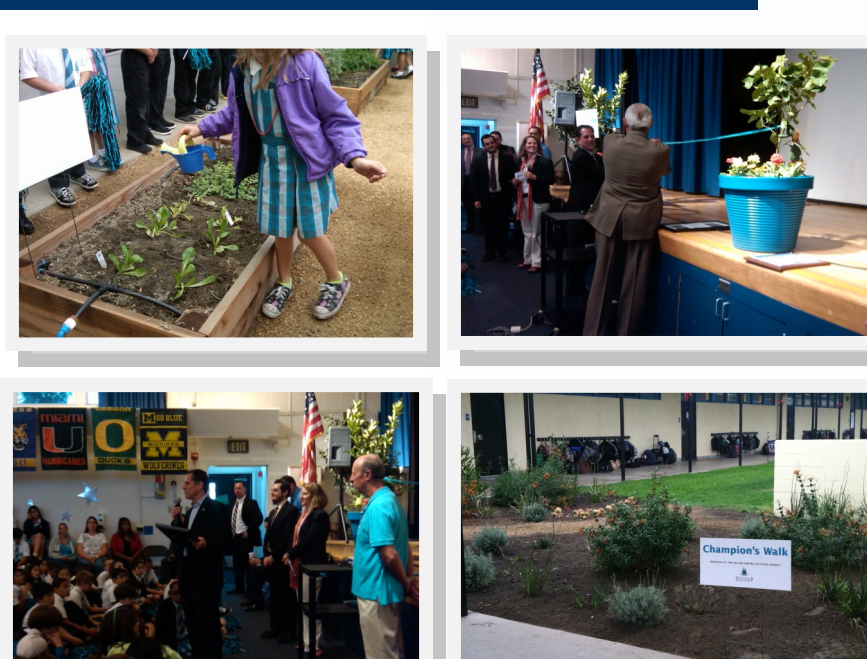
## Oxford Preparatory Academy Dedicates their Garden for the Garden in Every School® Program

On October 24, 2011, Oxford Preparatory Academy (OPA), located in Chino, held an assembly that included the dedication of their school garden.

OPA was one of the schools accepted for a grant from IEUA for the Garden in Every School® Program. This grant allowed for the installation of a water-wise school garden. Per grant requirements, each school must hold a dedication to recognize their hard work in creating a school garden that provides a unique educational environment, water efficiency ideas, gardening techniques, healthy lifestyles, etc.

IEUA Board Member, Steven J. Elie, who represents the cities of Chino and Chino Hills, was in attendance to present OPA with a Certificate of Completion. Director Elie congratulated the school community on their hard work and dedication. Director Elie recognized the importance of a water-wise school garden and the educational value that accompanies it.

For more information on the Garden in Every School® Program, contact Andrew Kanzler at 909.993.1897



**IEUA Board of Directors**

**Terry Catlin**  
President

**Michael Camacho**  
Vice President

**Steven J. Elie**  
Secretary/Treasurer

**Gene Koopman**  
Director

**Angel Santiago**  
Director

**Thomas A. Love**  
General Manager

**The Story of The Santa Ana Watershed**

The Story of The Santa Ana Watershed educational booklet with video component is complete and ready for distribution.

IEUA received grant funding from the State Water Resources Control Board for the Chino Creek Integrated Plan and Clean-Up Project that included an education and community outreach plan. The educational package creates an educational tool that will provide knowledge and opportunities to promote the preservation of the Watershed.

The purpose of the Santa Ana Watershed package is to understand the intriguing story of the Santa Ana Watershed. It aims to take you on a journey through the life forces the Watershed holds and to examine all of the elements that shape the Watershed. The package focuses on the following key topics; history of the Watershed, Santa Ana Rivers, sources and uses of water, water quality, flood control, habitat/wetlands/ecosystem restoration, landscape management and preservation/prevention.

The video will promote the necessity for education and restoration and the ways in which one can help. The Santa Ana Watershed affects all of us and we must work to understand it and preserve it.

To request copies of the educational package, please contact Andrea Carruthers at 909.993.1935  
For electronic viewing of booklet and video, visit <http://www.ieua.org/educations/education.html>

**FREE COPIES AVAILABLE!**

