

Renew and Recycle

Serving the Cities of Chino, Chino Hills, Fontana, Montclair, Ontario and Upland, as well as Monte Vista and Cucamonga Valley Water Districts.

Inland Empire Utilities Agency Signs Agreement for Largest Fuel Cell System Fueled by Renewable Biogas in the World

Landmark Agreement Signed to Install a 2.8 Megawatt Renewable Energy Fuel Cell System between Inland Empire Utilities Agency and UTS

Inland Empire Utilities Agency (IEUA), a water and wastewater service provider to 850,000 residents in the Inland Empire, signed a landmark 20-year power purchase agreement (PPA) with UTS to install, operate and maintain a 2.8 Megawatt (MW) fuel cell system, fueled primarily with renewable biogas, making it the largest unit of its kind in the world. The clean, efficient, renewable energy from the fuel cell system will provide power and thermal energy to IEUA's largest water recycling plant in Ontario, California.

"IEUA is very proud to augment its already successful renewable energy program with the addition of a combined heat and power fuel cell system" said Terry Catlin, IEUA's Board President. IEUA currently has 3.5 MW of solar power installed and 1 MW of wind power under design. Under the agreement, UTS will fund, design and construct the system, and maintain it over the duration of the contract term.

"The fuel cell allows IEUA to move closer to its strategic energy plan goal to go 'Gridless by 2020' with almost no capital outlay by the Agency," said Catlin. "Our plan is to minimize IEUA's dependency on energy purchased from the grid, and to be able to operate completely off the grid during peak energy usage periods." Catlin continued. "Our staff is currently evaluating other renewable energy generation opportunities to reach the Agency's 'Gridless' goal including a food waste-to-energy project as well as additional wind, solar and fuel cell generation."

IEUA will purchase power generated from the fuel cell plant at the agreed upon price over the next 20-years, and use the heat generated from the process to heat the biogas producing anaerobic digesters at the water recycling facility. The fuel cell plant is expected to be operational by late 2012.

Increasingly stringent emission permitting requirements by the South Coast Air Quality Management District, the local air pollution control agency, caused IEUA to evaluate alternatives to the existing biogas fueled internal-combustion engines used at their facilities. Fuel cells generate power and heat without combustion resulting in the generation of clean electricity. Due to the lack of combustion, the fuel cell emits virtually zero pollutants such as NOx, SOx, or particulate matter. The fuel cell electrical generation process is highly efficient which results in lower greenhouse gas emissions compared to combustion based power sources.

Water Conservation Tip:
Scrape the dishes clean instead of rinsing them before washing. There is no need to rinse unless they are heavily soiled. Use just enough detergent to get dishes clean. This will save water in unnecessary rinsing (saves 50-150 gallons/month).

Upcoming Events

December 4: Maintenance, Pruning and Integrated Pest Management
Chino Basin Water Conservation District
9:00 a.m.—12:30 p.m.

December 15: University of California Landscape Institute
Etiwanda Gardens, Rancho Cucamonga

January 26, 2011: Project Learning Tree Workshop
IEUA, HQB Event Room

REGION: Inland Leaders Explore Remedies for Uncertain Water Supplies

Press Enterprise
November 10, 2010
By: David Danelski

Twenty-eight years ago, Northern California voters killed a bond issue that would have paid for a canal to carry water from the big rivers in the north to fast-growing Southern California.

The Peripheral Canal, as it was called, is still being debated, and now officials are talking instead about building tunnels to carry the water more than 40 miles underground at a cost that could top \$14 billion. The tunnels would carry supplies under the Sacramento-San Joaquin Delta to the pumps that feed the California Aqueduct.

The Delta may be hundreds of miles from Inland water taps, but its aging levees, declining fish populations and water pumping limitations have Southern California water purveyors again looking for a big fix.

The goal is to bypass the environmentally sensitive and troubled Delta and ensure reliable deliveries to Southern California customers and to farmers and residents in the Central Valley and San Jose area.

Metropolitan Water District of Southern California provides wholesale supplies to many agencies, including Eastern and Western municipal water districts in Riverside County. The wholesaler obtains about 50 percent of its water from the Delta, a system of sloughs and wetlands fed by the Sacramento and San Joaquin rivers.

On a recent tour for Southern California leaders, Curt Schmutte, a Metropolitan engineer, described some of the problems - aging levees, sinking earth and the potential for earthquakes and seawater intrusion -- that jeopardize water supplies flowing through the Delta.

Schmutte stood on a Delta levee along the San Joaquin River and gestured toward cornfields growing on an island 30 feet below the river.

Fields in the Sacramento-San Joaquin River Delta are sinking, Schmutte said.

"As these islands continue to go down, the impact of an earthquake is going to be greater. ... If we have an earthquake, these levees would liquefy," Schmutte told a group of Inland officials who were on last month's tour.

Sea water from the San Francisco Bay would flood the Delta. Supplies pumped from the Delta into State Water Project aqueducts would become too salty for human consumption. A temporary fix to shore up a patchwork of levees would take at least six months, he said.

For complete article, visit: http://www.pe.com/business/local/stories/PE_News_Local_D_water07.472395f.html

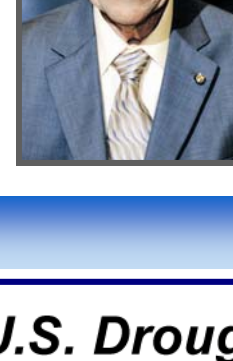
National Society of Agronomy Tours Regional Plant 5 and Chino Creek Wetlands and Educational Park



The National Society of Agronomy took part in a tour of the Regional Plant 5 Treatment Plant Tour, Chino Creek Wetlands and Educational Park and the Headquarters. The Society sought to understand the wastewater treatment process which results in the recycled water that is used for agricultural irrigation.



Water Resources Institute Presents Lifetime Achievement Award to Director John L. Anderson



Each year the Advisory Board of the Water Resources Institute (WRI) chooses a recipient to receive the coveted honor of the Lifetime Achievement Award. Each past recipient has been a proven leader at the local, state or federal level of leadership in the water community and beyond.

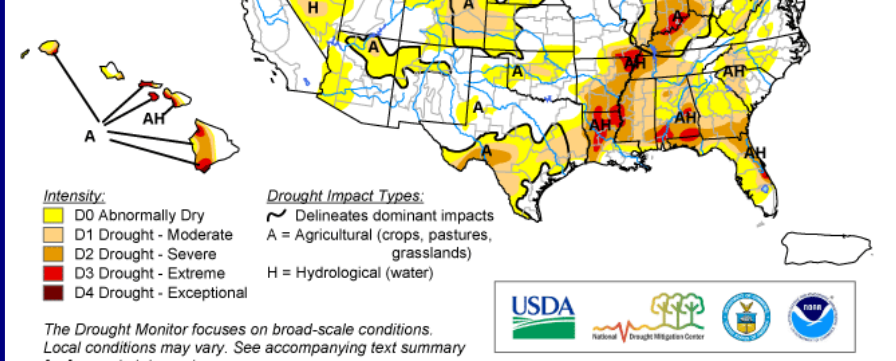
The 2010 recipient is **John L. Anderson**, Board Member for the Inland Empire Utilities Agency. WRI recognized John for his visionary leadership in water recycling and his commitment to a reliable water supply.

Fields in the Sacramento-San Joaquin River Delta are sinking, Schmutte said.

"As these islands continue to go down, the impact of an earthquake is going to be greater. ... If we have an earthquake, these levees would liquefy," Schmutte told a group of Inland officials who were on last month's tour.

Sea water from the San Francisco Bay would flood the Delta. Supplies pumped from the Delta into State Water Project aqueducts would become too salty for human consumption. A temporary fix to shore up a patchwork of levees would take at least six months, he said.

For complete article, visit: http://www.pe.com/business/local/stories/PE_News_Local_D_water07.472395f.html



Drought Summary
The West: It was another relatively warm and dry week for all but the coastal ranges along the Pacific Ocean from California up to Washington State.

Landscape Alliance

Upcoming Events at Rancho Santa Ana Botanic Garden

Rancho Santa Ana Botanic Garden
1500 N. College Ave.
Claremont, CA 91711-3157
Contact: Pauline Nash
Phone: (909) 625-8767, ext. 260, email: pnash@rsabg.org

Claremont, Calif., (November 17, 2010)—Every month Rancho Santa Ana Botanic Garden offers spectacular plant displays and opportunities for lifelong learning. Rancho Santa Ana Botanic Garden is located at 1500 N. College Ave., Claremont, California. Admission: free for RSABG members; \$8 adults; \$6 seniors and students; \$4 children 3-12.

Visit www.rsabg.org for more information or call (909) 625-8767.

To register for classes call the registrar at (909) 625-8767 ext. 224 or email registrar@rsabg.org. Pay by check or charge by phone. Registrar's office hours are Monday through Friday, 9 a.m. until 4 p.m. Rancho Santa Ana Botanic Garden members receive a 20 percent discount on programs and pay the lower member fee listed.

Grow Native Nursery

Open Wednesday through Sunday, 10 a.m. until 5 p.m., with two locations to serve you: Claremont and Westwood, L.A. The nurseries offer special sales, advise from expert staff and a stunning selection of fresh, vibrant, native California plants and water-wise solutions for home landscapes.

Art Exhibition: "Radiant Light: Shadow Sculpture of California Native Plants" - October 1 through December 31
Pamela Burgess' "Radiant Light" is an experimental art installation of 12 translucent sculptures and gossamer textiles that employ the subtle beauty of the winter landscape and plants at Rancho Santa Ana Botanic Garden. The serene images of California native plants, transformed into digital prints on acrylics and textiles, are placed along the paths of the Garden. Exhibition admission is free with standard Garden admission. **Extended hours every Thursday and**

Friday until December 18 at Evening Nights in the Garden. Spend crisp fall evenings in the Garden and see the beautifully illuminated art exhibition "Radiant Light." RSABG will be open until 7 p.m., December 3, 4, 10, 11, 17 and 18. Standard Garden admission applies.

Artist Tour: Radiant Nights: Evening Sculpture Exhibit Walks with Artist Pamela Burgess—December 14, 5 - 7 p.m.
Join artist Pamela Burgess on a tour of her exhibition "Radiant Light: Shadow Sculpture of California Native Plants," after sunset for an intriguing experience. Exhibit sponsors Allen Cantrell Landscaping and FX Luminaire have skillfully illuminated the sculptures for nighttime viewing, adding another layer of radiant light to the exhibit. Enjoy light refreshments while getting to know the artist before the exhibit tour led by the artist. You'll hear artist insights, inspirations and what challenges were overcome in creating this one of a kind new exhibit.
Guide: Pamela Burgess
Fee: member: \$15, general public: \$18

Class: Tai Chi in the Garden—December 2 and 9, 9 - 10 a.m.

The fluid movements of Tai Chi are based on nature and are well-suited for practice at the Garden. The low-impact exercise safe for all adults, Tai Chi increases strength and flexibility, reduces stress and improves balance, and has been shown to lower blood pressure and increase bone density. Taught in the Wu-style of Tai Chi, every class involves warm up, proper and safe instruction of each movement and the progressive movement through the form's stages. Classes are held indoors and outdoors depending on weather conditions; wear comfortable attire and shoes with flat soles, bring a bottle of water. No experience necessary, all are welcome to attend.

Teacher: Joseph Bojanek. Fee: 6-week series RSABG member \$50, public \$63; single session RSABG member \$10, public \$12. Limit 20 students each session. Preregistration is required.

Contact the registrar (909) 625-8767 ext 224 or email registrar@rsabg.org. Pay by check or charge by phone.

Class: Yoga in the Garden—December 1 and 15, 9:30 - 10:30 a.m.
Release stress, unwind your busy mind, enjoy the beauty and tranquility of the Garden. Classes are held indoors and outdoors depending on weather conditions; wear comfortable attire and shoes with flat soles, bring a yoga mat and bottle of water. No experience necessary, all are welcome to attend.

Teacher: Karen May. Fee: single session RSABG member \$10, public \$12. Limit 15 students each session. Preregistration is required.

Contact the registrar (909) 625-8767 ext 224 or email registrar@rsabg.org. Pay by check or charge by phone.

Bring it Together and Take it Home: Native Organic Garden and Home Landscape Series—Saturday, December 4, 9 a.m. - 12 p.m.
Learn about resources, tips and tools and go home with a plan for a home landscape. Handouts, plant and materials lists and resources about sources of landscaping essentials, along with motivation from Landscape design professionals Tony Zile and Elijah Thompkins will get you well on your way to a successful organic, natural and native garden. This is the final class in the Create and Maintain a Native Organic Garden and Home Landscape workshop series.
Individual class fee member: \$32, general public: \$40

Horticulture clinic: Free Native Plant Clinics—December 4, 10 a.m. - 1 p.m.
Get native plant gardening questions answered by RSABG gardening experts. Resource materials and landscaping references will be available. Clinics are held year round on the first Saturday of every month in the Lenz Classroom, RSABG Horticulture Complex. Garden admission is not necessary to attend.

Class: Gifts from the Garden—December 4, 1 - 3 p.m.
Just in time for the holidays! Instruction will include how to make scented gift soaps and sachets, culinary gifts like herbal butters and oils, seed collections, "just add water" gifts and great gifts for the holidays or any time. Materials will be provided for two gifts to take home. Additional supplies will be available for purchase.
Teacher: Dawn Van Allen, garden designer and urban farmer
Fee: member: \$40, general public: \$50

Garden Shop event: Members' Holiday Evening—Dec. 4, 4 - 8 p.m.
Members receive a additional 15 percent off all merchandise purchases (in addition to standard 10 percent member discounts). Come for unique gifts and stay holiday sales, festive live music, complimentary refreshments, free gift wrapping and prize drawings.

Garden Shop event: Holiday Open House
Dec. 5, 9 a.m. - 5 p.m.
Visitors receive free Garden admission, can visit with Santa and make crafts with the kids. Come

for unique gifts and stay holiday sales, festive live music, complimentary refreshments, free gift wrapping and prize drawings.

Free Garden Admission Day
Dec. 5, 8 a.m. - 5 p.m.
All visitors receive free admission to Rancho Santa Ana Botanic Garden.

Class: Hanging Reed Pouch Basket—Sunday, December 5, 9 a.m. - 12 p.m.
Create a decorative woven pouch intended for hanging in this fun workshop. Suitable for any skill level, from beginning to advanced weavers, the finished piece is decorative and functional. Plaiting and twining techniques will be used.
Teacher: Gloria Flickinger, fiber artist
Fee: member: \$45, general public: \$56

RSABG Event: Beginning Bird Walks—December 5, 8 - 9 a.m.
First Sunday, every month (Sept. - June), 8 a.m. Bring binoculars and join Pomona Valley Audubon Society on guided bird watching walks. Free with standard Garden admission.

RSABG Event: Guided Tram Tours
December 19, 10 - 11 a.m.
See the California coast and Mojave Desert in an hour! Our newest tour offers guided exploration of the Garden's northern 55 acres and highlights the beautiful and amazing diversity of the California Floristic Province. Tickets are available after 8 a.m., at the admission kiosk the day of the tour. Tickets \$5 per person; tickets are required in addition to standard Garden admission.

About RSABG
Rancho Santa Ana Botanic Garden, founded in 1927 by Susanna Bixby Bryant, is the largest botanic garden dedicated exclusively to California's native plants. The Garden is located on 86 acres in Claremont, approximately 35 miles east of Los Angeles. RSABG, a private, nonprofit organization, offers educational programs and special events throughout the year and is home of the Botany Department for Claremont Graduate University. The Garden offers a superb selection of California native plants for sale at Grow Native Nursery.

Visitor information
Rancho Santa Ana Botanic Garden, located at 1500 N. College Ave., Claremont, California, is open daily from 8 a.m. until 5 p.m., except major national holidays. The California Garden Shop is open daily from 9 a.m. until 5 p.m. Admission: free for RSABG members; \$8 adults; \$6 seniors and students; \$4 children 3-12; Grow Native Nursery is open Wednesday through Sunday 10 a.m. until 5 p.m., admission fees do not apply to visit the nursery. For more information please call (909) 625-8767 or visit www.rsabg.org.



Friday until December 18 at Evening Nights in the Garden. Spend crisp fall evenings in the Garden and see the beautifully illuminated art exhibition "Radiant Light." RSABG will be open until 7 p.m., December 3, 4, 10, 11, 17 and 18. Standard Garden admission applies.

Artist Tour: Radiant Nights: Evening Sculpture Exhibit Walks with Artist Pamela Burgess—December 14, 5 - 7 p.m. Join artist Pamela Burgess on a tour of her exhibition "Radiant Light: Shadow Sculpture of California Native Plants," after sunset for an intriguing experience. Exhibit sponsors Allen Cantrell Landscaping and FX Luminaire have skillfully illuminated the sculptures for nighttime viewing, adding another layer of radiant light to the exhibit. Enjoy light refreshments while getting to know the artist before the exhibit tour led by the artist. You'll hear artist insights, inspirations and what challenges were overcome in creating this one of a kind new exhibit. Guide: Pamela Burgess Fee: member: \$15, general public: \$18

Class: Tai Chi in the Garden—December 2 and 9, 9 - 10 a.m.

Horticulture clinic: Free Native Plant Clinics—December 4, 10 a.m. - 1 p.m. Get native plant gardening questions answered by RSABG gardening experts. Resource materials and landscaping references will be available. Clinics are held year round on the first Saturday of every month in the Lenz Classroom, RSABG Horticulture Complex. Garden admission is not necessary to attend.

Class: Gifts from the Garden—December 4, 1 - 3 p.m. Just in time for the holidays! Instruction will include how to make scented gift soaps and sachets, culinary gifts like herbal butters and oils, seed collections, "just add water" gifts and great gifts for the holidays or any time. Materials will be provided for two gifts to take home. Additional supplies will be available for purchase. Teacher: Dawn Van Allen, garden designer and urban farmer Fee: member: \$40, general public: \$50

Garden Shop event: Members' Holiday Evening—Dec. 4, 4 - 8 p.m. Members receive a additional 15 percent off all merchandise purchases (in addition to standard 10 percent member discounts). Come for unique gifts and stay holiday sales, festive live music, complimentary refreshments, free gift wrapping and prize drawings.

Bring it Together and Take it Home: Native Organic Garden and Home Landscape Series—Saturday, December 4, 9 a.m. - 12 p.m. Learn about resources, tips and tools and go home with a plan for a home landscape. Handouts, plant and materials lists and resources about sources of landscaping essentials, along with motivation from Landscape design professionals Tony Zile and Elijah Thompkins will get you well on your way to a successful organic, natural and native garden. This is the final class in the Create and Maintain a Native Organic Garden and Home Landscape workshop series. Individual class fee member: \$32, general public: \$40

Horticulture clinic: Free Native Plant Clinics—December 4, 10 a.m. - 1 p.m. Get native plant gardening questions answered by RSABG gardening experts. Resource materials and landscaping references will be available. Clinics are held year round on the first Saturday of every month in the Lenz Classroom, RSABG Horticulture Complex. Garden admission is not necessary to attend.

Class: Gifts from the Garden—December 4, 1 - 3 p.m. Just in time for the holidays! Instruction will include how to make scented gift soaps and sachets, culinary gifts like herbal butters and oils, seed collections, "just add water" gifts and great gifts for the holidays or any time. Materials will be provided for two gifts to take home. Additional supplies will be available for purchase. Teacher: Dawn Van Allen, garden designer and urban farmer Fee: member: \$40, general public: \$50

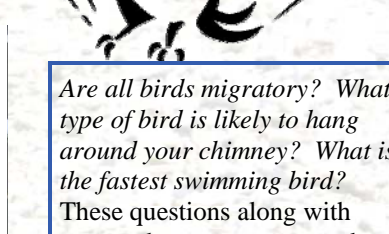
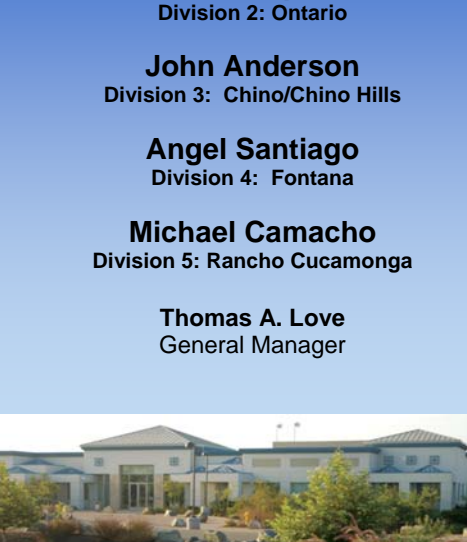
Garden Shop event: Members' Holiday Evening—Dec. 4, 4 - 8 p.m. Members receive a additional 15 percent off all merchandise purchases (in addition to standard 10 percent member discounts). Come for unique gifts and stay holiday sales, festive live music, complimentary refreshments, free gift wrapping and prize drawings.

Bring it Together and Take it Home: Native Organic Garden and Home Landscape Series—Saturday, December 4, 9 a.m. - 12 p.m. Learn about resources, tips and tools and go home with a plan for a home landscape. Handouts, plant and materials lists and resources about sources of landscaping essentials, along with motivation from Landscape design professionals Tony Zile and Elijah Thompkins will get you well on your way to a successful organic, natural and native garden. This is the final class in the Create and Maintain a Native Organic Garden and Home Landscape workshop series. Individual class fee member: \$32, general public: \$40

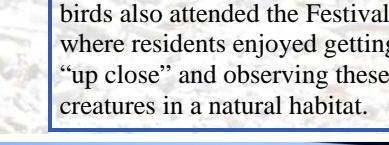
Horticulture clinic: Free Native Plant Clinics—December 4, 10 a.m. - 1 p.m. Get native plant gardening questions answered by RSABG gardening experts. Resource materials and landscaping references will be available. Clinics are held year round on the first Saturday of every month in the Lenz Classroom, RSABG Horticulture Complex. Garden admission is not necessary to attend.

Class: Gifts from the Garden—December 4, 1 - 3 p.m. Just in time for the holidays! Instruction will include how to make scented gift soaps and sachets, culinary gifts like herbal butters and oils, seed collections, "just add water" gifts and great gifts for the holidays or any time. Materials will be provided for two gifts to take home. Additional supplies will be available for purchase. Teacher: Dawn Van Allen, garden designer and urban farmer Fee: member: \$40, general public: \$50

Garden Shop event: Members' Holiday Evening—Dec. 4, 4 - 8 p.m. Members receive a additional 15 percent off all merchandise purchases (in addition to standard 10 percent member discounts). Come for unique gifts and stay holiday sales, festive live music, complimentary refreshments, free gift wrapping and prize drawings.



Are all birds migratory? What type of bird is likely to hang around your chimney? What is the fastest swimming bird? These questions along with many others were answered on Saturday, November 6th at the Santa Ana Watershed Association's Annual Bird Festival in the Chino Creek Wetlands and Educational Park. Residents enjoyed booths filled with fun activities that taught about birds and the environment. Many live birds also attended the Festival where residents enjoyed getting "up close" and observing these creatures in a natural habitat.



Innovation and Creativity