

**PRETREATMENT & SOURCE CONTROL
&
COLLECTIONS**



Inland Empire Utilities Agency

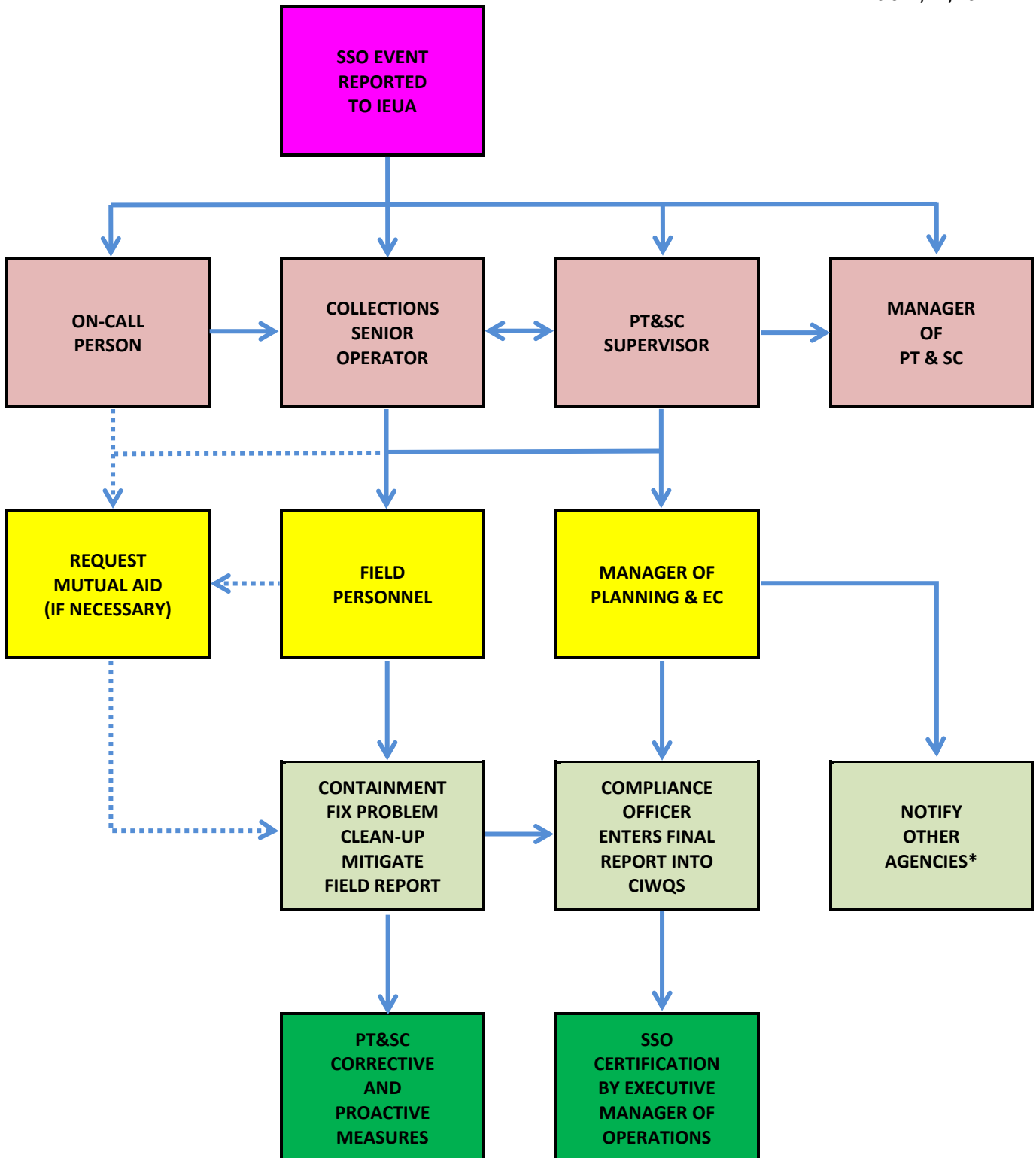
A MUNICIPAL WATER DISTRICT

**CONCISE
CONTACT LIST
IN CASE OF EMERGENCY
SSO**

April 2012

Chain of Communication for Reporting SSO

As of 4/24/2012



*More in Appendix 1-2 for Monitoring, Reporting and Notification requirements.
 More in Appendix 6-1 for Sanitary Sewer Overflow Uniform Response Guidance Plan

SSO RESPONSE FLOWCHART

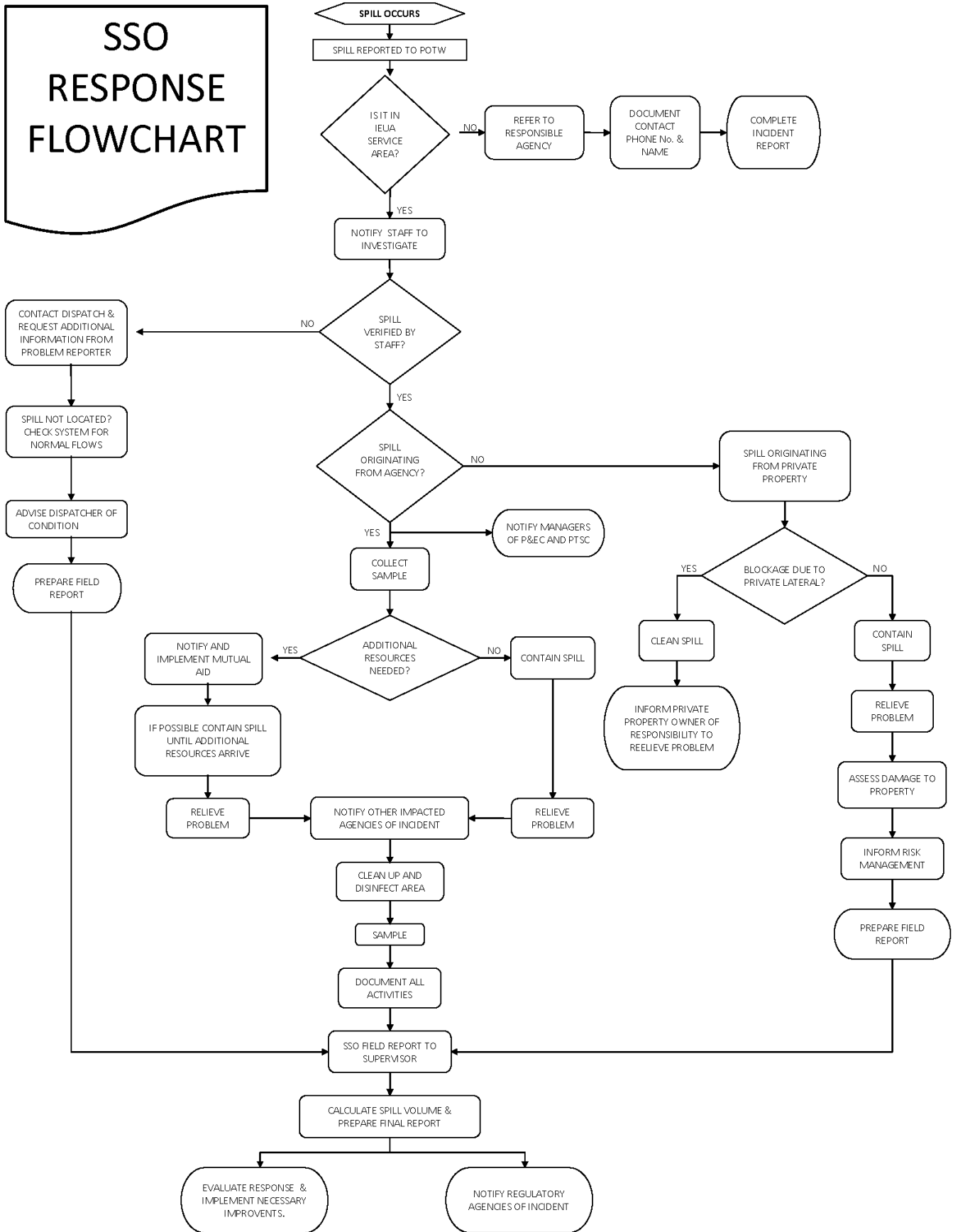


Table 1 - IEUA Emergency Cell Phone Contact List for SSO

Operations	Planning & EC.	PT & SC & Collections	Maintenance	Safety/Risk Management
Michael Gutierrez Ops Supervisor (RP-1) (909) 680-7166	Chris Berch Mgr. of Planning & EC (909) 732-1844	Collections System Emergency On-Call Person (951) 675-1131	On-Call PMT (909) 203-2976	Claudia Neighbors Safety Analyst (951) 255-7439
Moustafa Aly Ops Supervisor (CC/CDSA) (909) 732-3005	Bonita Fan Sr. Env. Compliance Officer (909) 993-1716 (Office)	Alex Arguelles Sr. Collections Operator (909) 831-6400	Ernest Yeboah Mgr of EP and Maintenance (909) 203-2975	Warren Green Deputy Mgr. of HR (909) 217-0639
Manuel Moreno Ops Supervisor (RP-4) (909) 635-7168		Craig Proctor PT & SC Supervisor (909) 573-5709	Mike McFarland (909) 472-5370	Jack Frazier Mgr. of Safety & Risk Mgmt. (951) 415-6985
Gregg Bingham Ops Supervisor (RP-2/RP-5) (909) 342-4683		Pari Dezham Mgr. of PT & SC (949) 374-0511		Gina Hillary Mgr. of HR & Support Services (951) 505-7811
Chander Letulle Deputy Mgr. (RP-5/CC/RP-2) (909) 573-6350				
Gaspar Garza Deputy Mgr. (RP-1/RP-4) (909) 241-0788				
Randy Lee Mgr. of Operations (909) 472-1722				
Randy Lee Interim Exec. Mgr. of Ops (909) 472-1722				

NOTE: FOR EACH DEPARTMENT, CALL FROM TOP TO BOTTOM UNTIL CONTACT IS MADE.

Table 2 - Member Agencies Emergency Contact List for SSO

AGENCY/PERSON TO CALL (SEQUENTIALLY)	NORMAL BUSINESS HOURS CELL PHONE	AFTER HOURS EMERGENCY
City of Chino (On-Call)	909-591-9824	909-628-1234 (Police)
Public Works Services Manager (Kurt Powell)	909-721-0741	
Environmental Coordinator (Don Allinder)	951-316-5997	
Environmental Technician (Ruben Valdez)	562-201-0134	
Maintenance Lead Worker (Joe Alex Cavalier)	760-559-4878	
City of Chino Hills (On-Call)	909-238-3279	909-364-2000 (Police)
Public Works Department (Mike Maestas)	909-573-4375	
Operations Supervisor (Olson Childress)	909-573-4359	
Public Works Department (Richard Gutierrez)	909-573-4369	
City of Fontana (On-Call)	909-350-6760	909-350-7700 (Police)
Utilities Supervisor (Jerry Perez)	909-240-1301	
Environmental Control Supervisor (Tony Mata)	909-224-5538	
Environmental Control Specialist (Richard Brooks)	909-549-9542	
Public Services Manager (Dan Chadwick)	909-767-0954	
Street and Utility standby	909-721-8770	
City of Montclair (On-Call)	909-625-9466	909-621-4771 (Police)
Environmental Manager (Nicole Greene)	951-743-7592	
Public Works Superintendent (Xavier Mendez)	909-721-1755	
City of Ontario (On-Call)	909-721-7246	909-721-7246 (24/7)
Utilities Supervisor (Andy Marquez)	909-721-8931	
Utilities Senior Technician (Danny Fernandez)	909-772-8338	
Water Production Manager (Tom O'Neill)	909-721-8948	
Environmental Programs Manager (Alisa Hasbrouck)	909-721-9137	
City of Upland (On-Call)	909-291-2930	909-946-7624 (Police)
Water Operations Manager (Mark Wiley)	909-376-1305	
Principal Utilities Engineer (Shaun Stone)	909-376-2488	
Director Public Works – Operations (Anthony La)	909-376-1291	
Cucamonga Valley Water District (On-Call)	909-987-2591	909-987-2591 (24/7)
Construction & Maintenance Superintendent (George Rodriguez)	951-206-7709	
Sewer Maintenance Foreman (Robert Koczko)	909-912-9718	
Water Maintenance Foreman (Patrick Milroy)	951-990-5558	

Table 3.1 - Agencies to be Notified for Category 1 SSO

Agency	Phone /E-mail	Notification Time
Office of Emergency Services (OES)	(800) 852-7550	Within 2 hrs after becoming aware of discharge
San Bernardino County Environmental Health Services	Director of Environmental Health davera@dph.sbcounty.gov or (800) 472-2376 for emergency	Within 2 hrs after becoming aware of discharge
Regional Water Quality Control Board – Region 8	(951) 782-4130	Within 2 hrs after becoming aware of discharge (not necessary if OES is contacted)
Regional Water Quality Control Board – Region 8	spillreportRX@waterboards.ca.gov	Within 24 hrs after becoming aware of discharge (email certification)
Regional Water Quality Control Board – Region 8	INITIAL On-Line Report http://www.swrcb.ca.gov/ciwqs/	Within 3 days after becoming aware of discharge
Regional Water Quality Control Board – Region 8	FINAL On-Line Report http://www.swrcb.ca.gov/ciwqs/	Within 15 days after conclusion of SSO remediation

Notes:

Category 1 - All discharges of sewage resulting from a failure in the Enrollee's sanitary sewer system that:

- A. Equal or exceed 1,000 gallons, or
- B. Result in a discharge to a drainage channel and/or surface water; or
- C. Discharge to a storm drainpipe that was not fully captured and returned to the sanitary sewer system.

Minimum Mandatory Information to be Included in Reporting within 2 hours to OES and SBCEHS:

- 1) Location, date, and time;
- 2) Water body that received or will receive discharge;
- 3) Estimate of the amount of sewage or other waste released and the amount that reached surface water at time of notification;
- 4) If ongoing, estimated flow rate of the release at time of notification;
- 5) Name, organization, phone number, and email address of the reporting representative.

Minimum Mandatory Information to be Included in Reporting for 24-hr certification to RWQCB:

- 1) Agency NPDES No., Order No., and MRP No., if applicable;
- 2) Location, date, and time of the discharge;
- 3) Water body that received the discharge; description of level of treatment of the sewage or other waste discharged.
- 4) An initial estimate of the amount of sewage or other waste released and the amount that reached a surface water;
- 5) OES Control No and the date and time that notification of the incident was provided to the OES;
- 6) name of the local health officer or director of the environmental health representative notified (if contacted directly); the date and time of notification, and the method of notification (e.g., phone, fax, or email)

Minimum Mandatory Information to be Included Prior to Finalizing and Certifying Category 1 SSO

- 1) Location of SSO by entering GPS coordinates;
- 2) Applicable Regional Water Board, i.e. identify the region in which the SSO occurred;
- 3) County where SSO occurred;
- 4) Whether or not the SSO entered a drainage channel and/or surface water;
- 5) Whether or not the SSO was discharged to a storm drain pipe that was not fully captured and returned to the sanitary sewer system;
- 6) Estimated SSO volume in gallons;
- 7) SSO source (manhole, cleanout, etc.);
- 8) SSO cause (mainline blockage, roots, etc.);
- 9) Time of SSO notification or discovery;
- 10) Estimated operator arrival time;
- 11) SSO destination;
- 12) Estimated SSO end time;
- 13) Estimated SSO volume that reached surface water, drainage channel, or not recovered from a storm drain;
- 14) Estimated SSO amount recovered;
- 15) Response and corrective action taken;
- 16) If samples were taken, identify which regulatory agencies received sample results (if applicable). If no samples were taken, NA must be selected;
- 17) Parameters that samples were analyzed for (if applicable);
- 18) Identification of whether or not health warnings were posted;
- 19) Beaches impacted (if applicable). If no beach was impacted, NA must be selected;
- 20) Whether or not there is an ongoing investigation;
- 21) Steps taken or planned to reduce, eliminate, and prevent recurrence of the overflow and a schedule of major milestones for those steps;
- 22) OES control number (if applicable);
- 23) Date OES was called (if applicable);
- 24) Time OES was called (if applicable);
- 25) Identification of whether or not County Health Officers were called;
- 26) Date County Health Officer was called (if applicable); and
- 27) Time County Health Officer was called (if applicable);
- 28) SSO Certification. Upon SSO Certification, the SSO Database will issue a Final SSO Identification (ID) Number.

Table 3.2 - Agencies to be Notified for Category 2 SSO

Agency	Phone /E-mail	Notification Time
Regional Water Quality Control Board – Region 8	On-Line Report Only http://www.swrcb.ca.gov/ciwqs/	Within 30 days after the end of the calendar month in which the SSO occurs

Notes:

Category 2 - All other discharges of sewage resulting from a failure in the Enrollee's sanitary sewer system that does not meet Category 1 criteria. (Only online CIWQS reporting required for Category 2 SSOs within 30 days after the end of the calendar month in which the SSO occurs)

Minimum Mandatory Information to be Included Prior to Finalizing and Certifying Category 2 SSO

- 1) Location of SSO by entering GPS coordinates;
- 2) Applicable Regional Water Board, i.e. identify the region in which the SSO occurred;
- 3) County where SSO occurred;
- 4) Whether or not the SSO entered a drainage channel and/or surface water;
- 5) Whether or not the SSO was discharged to a storm drain pipe that was not fully captured and returned to the sanitary sewer system;
- 6) Estimated SSO volume in gallons;
- 7) SSO source (manhole, cleanout, etc.);
- 8) SSO cause (mainline blockage, roots, etc.);
- 9) Time of SSO notification or discovery;
- 10) Estimated operator arrival time;
- 11) SSO destination;
- 12) Estimated SSO end time; and
- 13) SSO Certification. Upon SSO Certification, the SSO Database will issue a Final SSO Identification (ID) Number.

Table 4 - Other Regulatory Agencies Contact List (If Required)

AGENCY	PHONE	CRITERIA
California Department of Fish and Game	(909) 484-0167	Sewage spill impacts or threatens state water.
California Highway Patrol	Normally contacted by OES 909-388-8000	Sewage spill occurs within their jurisdictional boundaries.
Department of Transportation (CALTRANS)	866.383.4631 909.383.4631	Sewage spill affects a state highway.
Department of Water Resources	Call OES	Sewage spill threatens to contaminate or otherwise disrupt the operation of the State Water Project.
Orange County Emergency Management Agency (OCEMA)	714.723.7111 Fax: 714.567.6340	Sewage spill impacts the storm drain system in Orange County.
Riverside County Flood Control and Water Conservation District	909.955.1200 Fax: 909.788.9965	Sewage spill impacts the storm drain system in San Bernardino County.
San Bernardino County Environmental Management Group Department of Health Services	909.387.4692	Sewage spill occurs in San Bernardino County that is a public health and safety hazard.
Orange County Water District	714.378.3200 Fax: 714.378.3373	Sewage spill discharges into Prado Basin (via tributary creeks) or the Santa Ana River